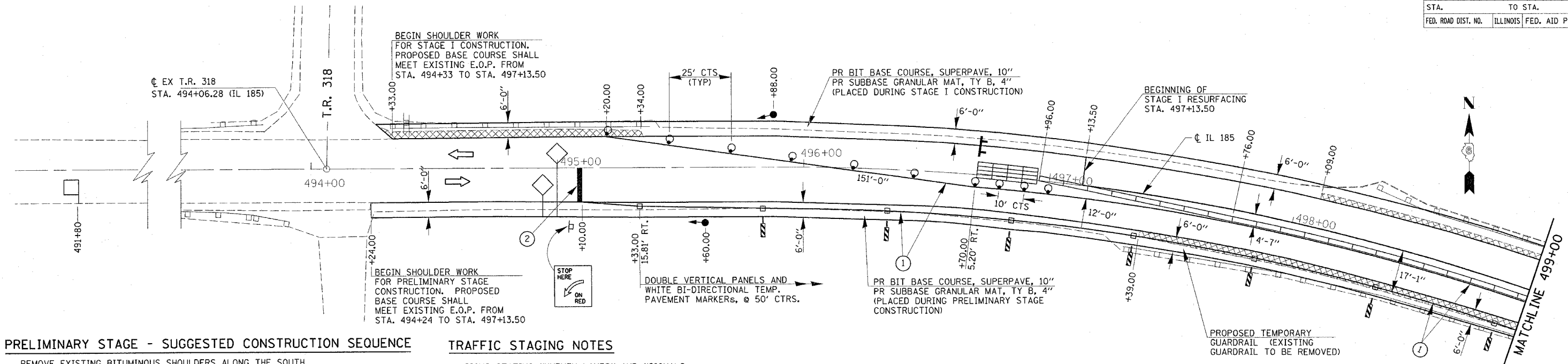


F.A.P. RTE.	SECTION	COUNTY	TOTAL SHEETS	SHEET NO.
777	101B-1, BR-2	MONTGOMERY	104	29
STA.		TO STA.		
FED. ROAD DIST. NO.		ILLINOIS FED. AID PROJECT		



PRELIMINARY STAGE - SUGGESTED CONSTRUCTION SEQUENCE

REMOVE EXISTING BITUMINOUS SHOULDERS ALONG THE SOUTH SIDE OF IL 185 (BEGINNING AT STA. 494+24), REPLACE WITH SUB-BASE GRANULAR MATERIAL, 4" AND BITUMINOUS BASE COURSE, 10". PROPOSED WIDTHS ARE CALLED OUT ON THE SHEETS. PLACE "MAX WIDTH" SIGNING AT THE LOCATIONS SHOWN IN THESE PLANS.

SET UP STAGE 1 TRAFFIC CONTROL UTILIZING THESE PLANS IN CONJUNCTION WITH HIGHWAY STANDARD 701321. PLACE TEMPORARY CONCRETE BARRIER AND PAVEMENT MARKINGS (STOP BARS, LANE LINES, ETC.) IN ACCORDANCE TO THESE PLANS.

INSTALL TEMPORARY SIGNALIZATION AND MICROWAVE DETECTION SYSTEMS AT THE LOCATIONS CALLED OUT ON THESE PLANS.

CONSTRUCT TEMPORARY AGGREGATE ACCESS ROAD ALONG THE EAST SHOULDER BETWEEN STA. 509+09 AND STA. 507+80.

INSTALL TEMPORARY GUARDRAIL AS SHOWN IN THESE PLANS FOR STAGE 1 TRAFFIC.

STAGE I - SUGGESTED CONSTRUCTION SEQUENCE

PERFORM STAGE 1 STRUCTURE REMOVAL AND CONSTRUCTION FOR THE SHOAL CREEK STRUCTURE (S.N. 068-0028).

PERFORM IL 185 ROADWAY WORK FOR THE NORTHBOUND LANE (NO PROPOSED BIT. CONC. SURFACE COURSE) INCLUDING THE REMOVAL OF EXISTING BITUMINOUS SHOULDERS ALONG THE NORTH AND EAST SIDES OF IL 185 (BEGINNING AT STA. 494+33), THE PLACEMENT OF SUB-BASE GRANULAR MATERIAL, 4" & BITUMINOUS BASE COURSE, 10", AND FIELD ENTRANCE WORK AT STA. 502+09 LT.

INSTALL TEMPORARY GUARDRAIL AS SHOWN IN THESE PLANS FOR STAGE 2 TRAFFIC.

INSTALL 2 REUSABLE ENERGY ABSORBING CRASH TERMINALS AT STATIONS 505+38.30 & 506+28.50.

STAGE II - SUGGESTED CONSTRUCTION SEQUENCE

FOLLOWING THE COMPLETION OF STAGE 1 CONSTRUCTION, RELOCATE TEMPORARY CONCRETE BARRIER WALL AND PLACE TEMPORARY PAVEMENT MARKING IN ACCORDANCE TO THESE PLANS.

PERFORM STAGE 2 STRUCTURE REMOVAL AND CONSTRUCTION FOR THE SHOAL CREEK STRUCTURE.

PERFORM IL 185 ROADWAY WORK (NO PROPOSED BIT. CONC. SURFACE COURSE) INCLUDING ASSOCIATED EARTH WORK AND REMOVAL OF THE OUTER 4'-0" OF BITUMINOUS BASE COURSE ON BOTH LEFT & RIGHT SIDES OF THE ROADWAY, SOUTHEAST OF THE SHOAL CREEK STRUCTURE.

REMOVE TEMPORARY GUARDRAIL AND CONSTRUCT STEEL PLATE BEAM GUARDRAIL AND TRAFFIC BARRIER TERMINAL, TYPE 1 (SPECIAL) AS DETAILED IN THESE PLANS.

REMOVE TEMPORARY GUARDRAIL AND CONSTRUCT STEEL PLATE BEAM GUARDRAIL AND TRAFFIC BARRIER TERMINAL, TYPE 1 (SPECIAL) AS DETAILED IN THESE PLANS.

TRAFFIC STAGING NOTES

SIGNS STATING "UNEVEN LANES" AND "SIGNALS AHEAD" SHALL BE ERECTED DURING STAGE CONSTRUCTION BY THE CONTRACTOR AT LOCATIONS AS DIRECTED BY THE ENGINEER. THESE SIGNS ARE INCIDENTAL TO THE COST OF THE CONTRACT.

DURING STAGE CONSTRUCTION, EXTRA FLAGGERS ARE NECESSARY FOR BRIDGE DECK PAVING OPERATIONS. EXTRA FLASHERS AND WARNINGS ARE NEEDED FOR TRAFFIC CONTROL AT NIGHT DUE TO THE VERTICAL RISE SOUTHEAST OF SHOAL CREEK.

THIS TRAFFIC CONTROL PLAN SHALL BE USED IN CONJUNCTION WITH STANDARD 701321 AND AS DIRECTED BY THE ENGINEER. ALL WORK REQUIRED TO SET UP, MAINTAIN, AND REMOVE TRAFFIC CONTROL AS DETAILED IN THESE PLANS SHALL BE INCLUDED IN THE COST FOR "TRAFFIC CONTROL AND PROTECTION, STANDARD 701321 (SPECIAL)".

THE CONTRACTOR SHALL PLACE MAX WIDTH SIGNS BEFORE IMPLEMENTING ANY STAGE TRAFFIC CONTROL. THESE SIGNS SHALL BE INCLUDED IN THE COST OF "TRAFFIC CONTROL AND PROTECTION, STANDARD 701321 (SPECIAL)". (SEE MAX WIDTH SIGN DETAIL SHEET)

TEMPORARY RUMBLE STRIPS, TEMPORARY SIGNALING, TEMPORARY BARRIER WALL REFLECTORS, SHALL BE INSTALLED IN ACCORDANCE WITH STANDARD 701321 OR AS DIRECTED BY THE ENGINEER.

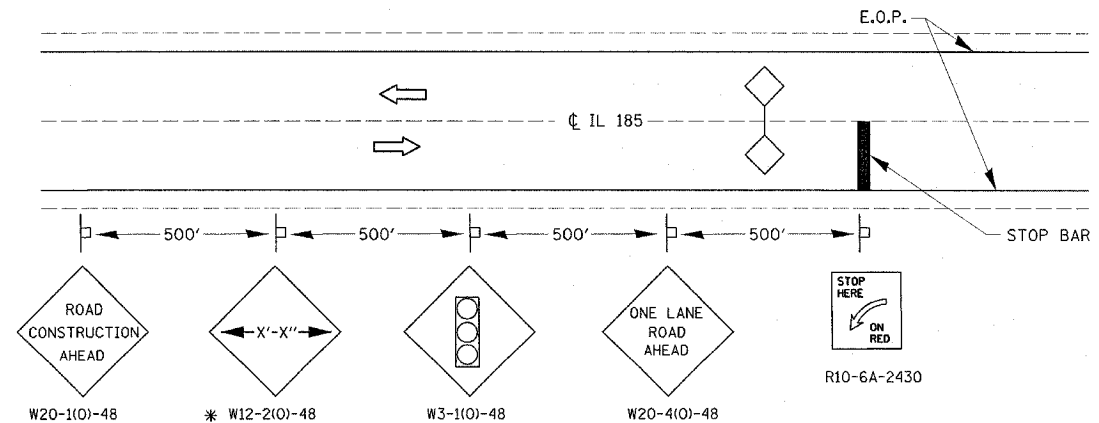
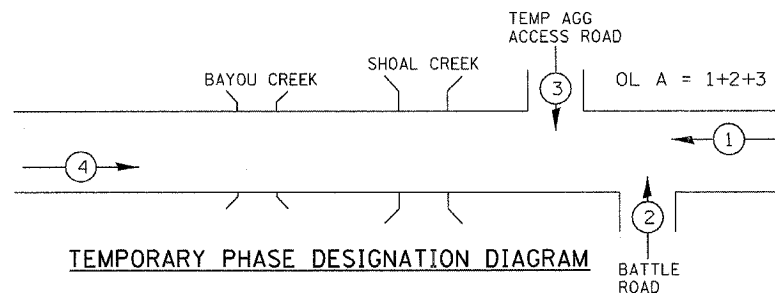
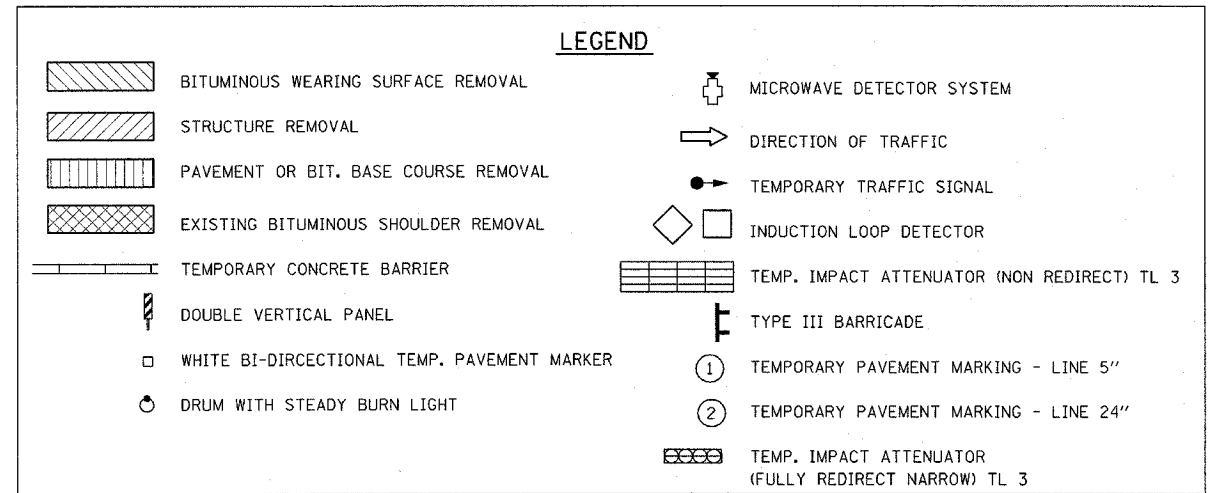
THE CONTRACTOR SHALL NOTIFY LARRY SIMON (PH. 785-5836) IN THE DISTRICT 6 TRAFFIC SECTION OF THE BUREAU OF OPERATIONS AT LEAST ONE WEEK PRIOR TO IMPLEMENTING STAGE TRAFFIC CONTROL.

THE FIRST AND LAST SECTION OF EVERY RUN OF TEMPORARY CONCRETE BARRIER WALL SHALL BE SECURED TO THE PAVEMENT WITH DOWEL BARS IN ACCORDANCE WITH SECTION 704.06 OF THE STANDARD SPECIFICATIONS BOOK.

THE CONTRACTOR SHALL NOTIFY KYLE ARMSTRONG (PH. 558-6523) IN THE DISTRICT 6 TRAFFIC SECTION OF THE BUREAU OF OPERATIONS AT LEAST THREE DAYS PRIOR TO ACTIVATING THE TEMPORARY TRAFFIC SIGNALS.

48"X48" SIGNS ARE TO BE USED FOR THE ROAD CLOSURE OF T.R. 318. THIS TRAFFIC CONTROL PLAN WAS LAYED OUT WITH CONCRETE BARRIER WALLS AT 10'-0" LENGTHS. THE CONTRACTOR WILL HAVE THE OPTION OF USING 12'-6" WALL LENGTHS AS CALLED OUT IN STD. 704001-02 OR THE 10'-0" LENGTHS AS SHOWN IN THESE PLANS.

SAWCUTS FOR PROPOSED SHOULDER WORK SHALL BE INCLUDED IN THE COSTS FOR "BITUMINOUS CONCRETE SHOULDER REMOVAL".



* MAX WIDTH DIMENSIONS SHALL BE DETERMINED BY THE ENGINEER.

ILLINOIS DEPARTMENT OF TRANSPORTATION
MAINTENANCE OF TRAFFIC & STAGING PLANS
PRELIMINARY & STAGE I
 FAP 777 (IL RTE. 185)
 SECTION 101B-1, BR-2)
 MONTGOMERY COUNTY
 SCALE: VERT. _____
 HORIZ. _____
 DATE _____ DRAWN BY RTS
 CHECKED BY _____

PLOT DATE = 1/23/2006
 PLOT SCALE = 20.0000 / 1 IN.
 USER NAME = aiegler1