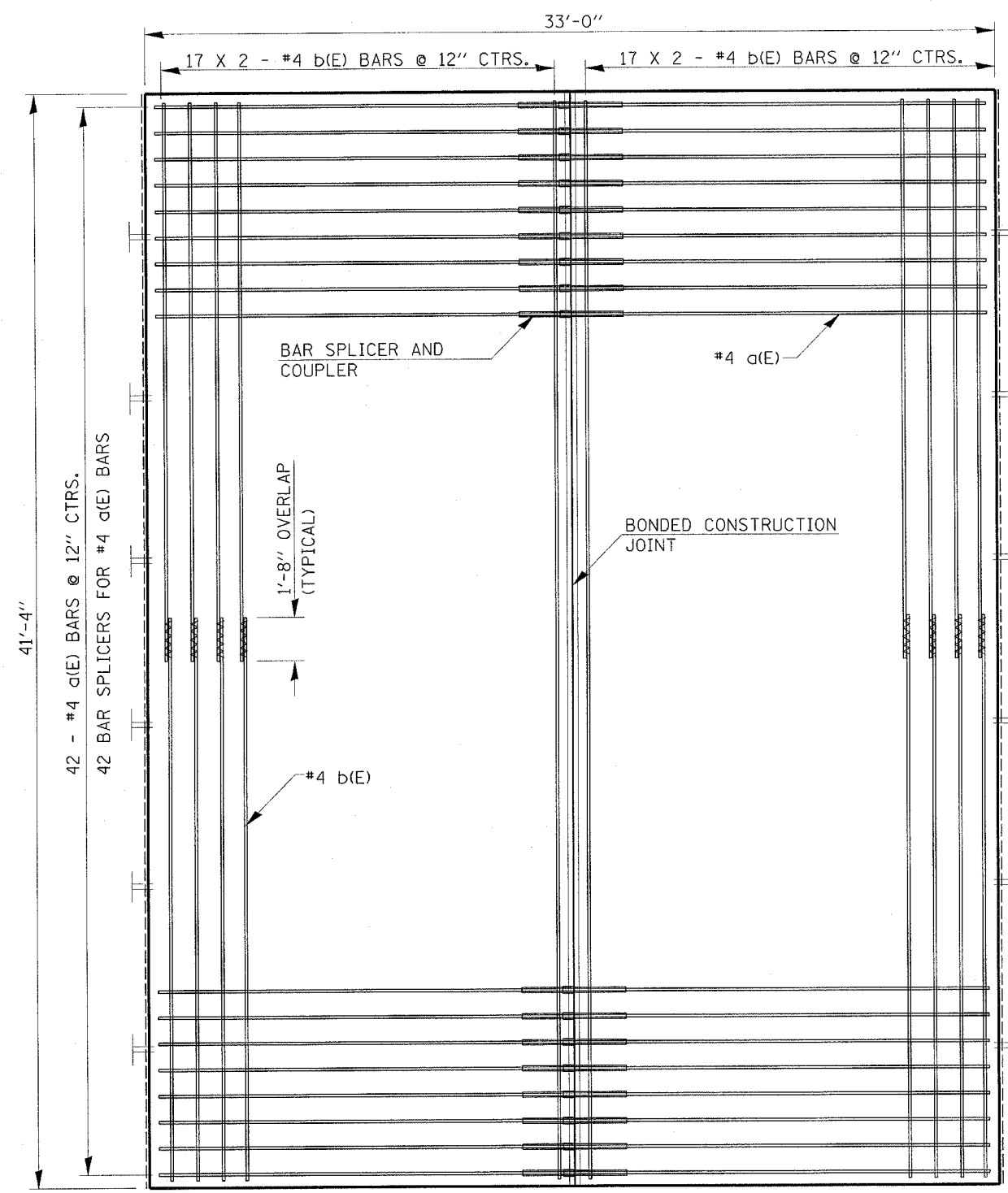
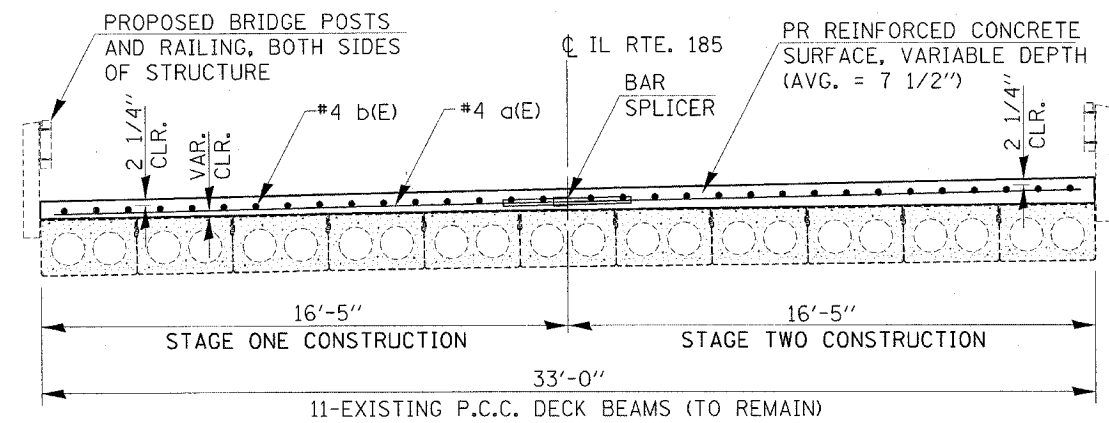


FAP RTE.	SECTION	COUNTY	TOTAL SHEETS	SHEET NO.
777	10(B-1, BR-2)	MONTGOMERY	104	48
STA. _____		TO STA. _____		
FED. ROAD DIST. NO. _____		ILLINOIS FED. AID PROJECT		

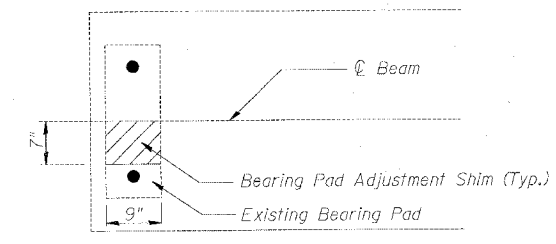
**EAST ABUTMENT**



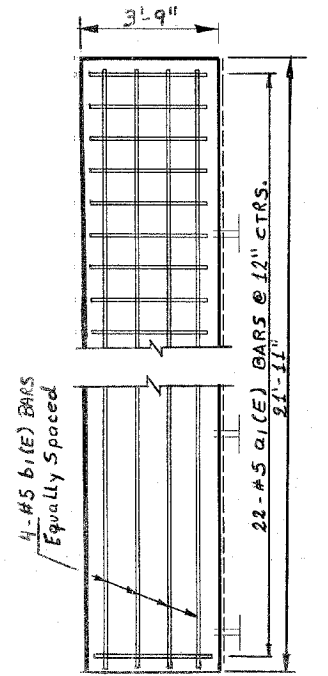
**WEST ABUTMENT**



**PROPOSED SECTION  
LOOKING EAST**



**BEARING PAD ADJUSTMENT SHIM**



**APPROACH SLAB  
OVER NELSON BEAMS  
(Typical all corners)**

BILL OF MATERIAL				
BAR	No.	SIZE	LENGTH	SHAPE
a(E)	84	#5	16'-3"	—
a <sub>1</sub> (E)	88	#5	3'-5"	—
b(E)	68	#5	21'-4"	—
b <sub>1</sub> (E)	16	#5	21'-7"	—
REINFORCEMENT BARS, EPOXY COATED			POUND	3610

ILLINOIS DEPARTMENT OF TRANSPORTATION  
**REBAR / BAR SPLICER LAYOUT**  
 S.N. 068-0027  
 FAP 777 (IL 185)  
 SECTION 10(B-1, BR-2)  
 MONTGOMERY COUNTY