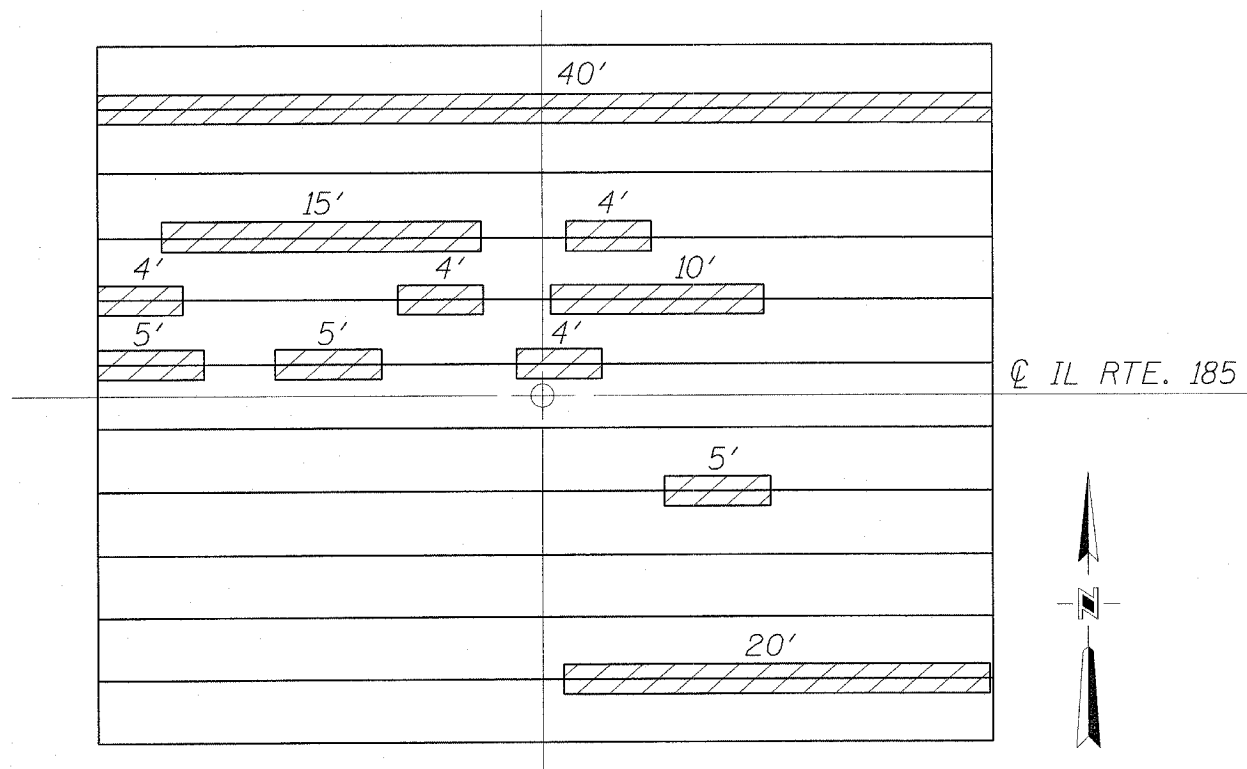


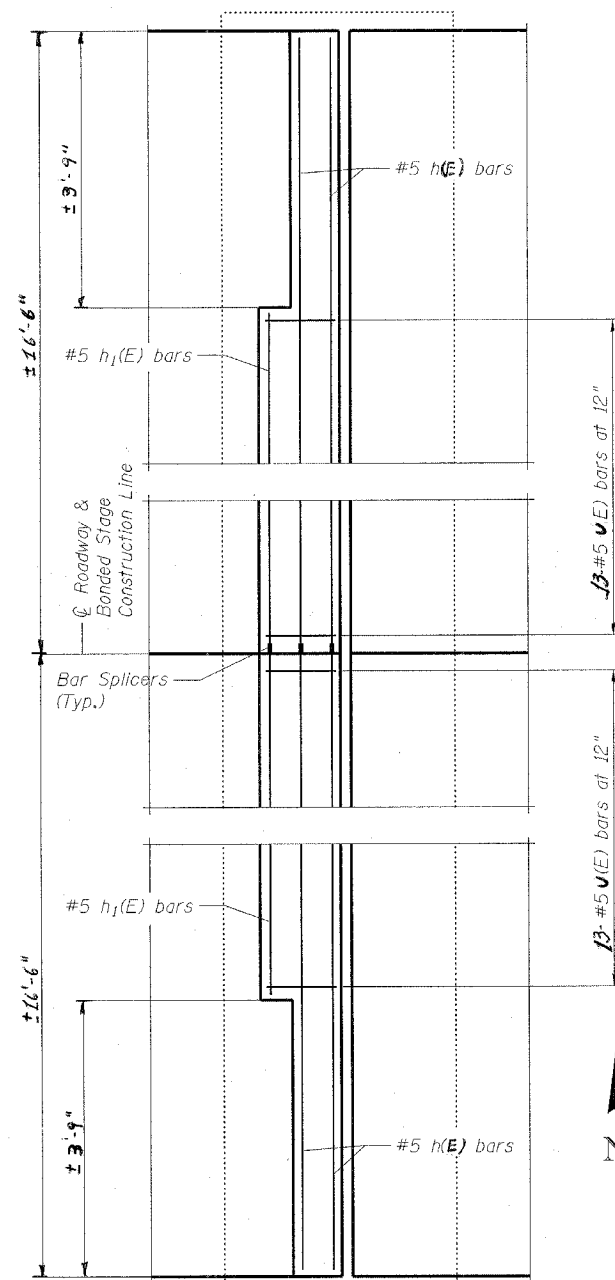
FAP RTE.	SECTION	COUNTY	TOTAL SHEETS	SHEET NO.
777	10(B-1, BR-2)	MONTGOMERY	104	42
STA.		TO STA.		
FED. ROAD DIST. NO.		ILLINOIS FED. AID PROJECT		



-- PROPOSED KEYWAY REPAIR

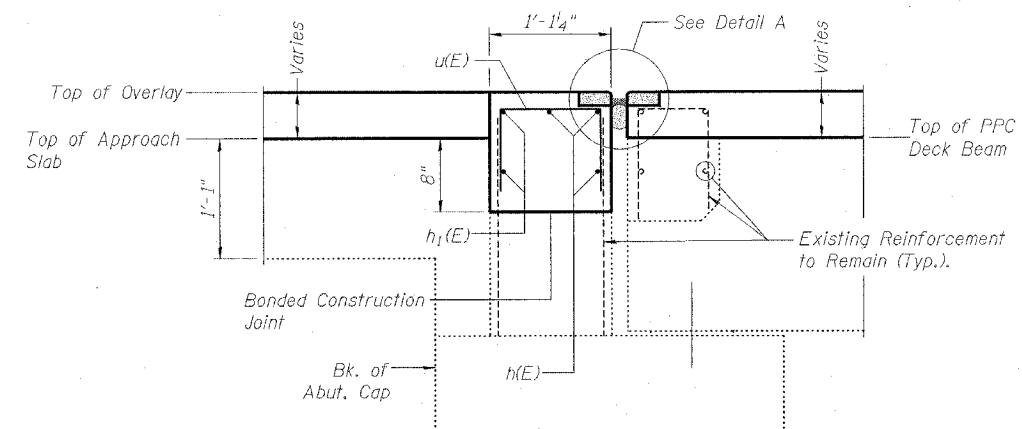
NOTE: THE QUANTITY GIVEN FOR KEYWAY REPAIRS IS AN ESTMATE. THE ACTUAL KEYWAY REPAIR LOCATIONS AND QUANTITY SHALL BE DETERMINED BY THE ENGINEER AFTER REMOVAL OF EXISTING WEARING SURFACE.

**KEYWAY REPAIR
PLAN VIEW
S.N. 068-0027**

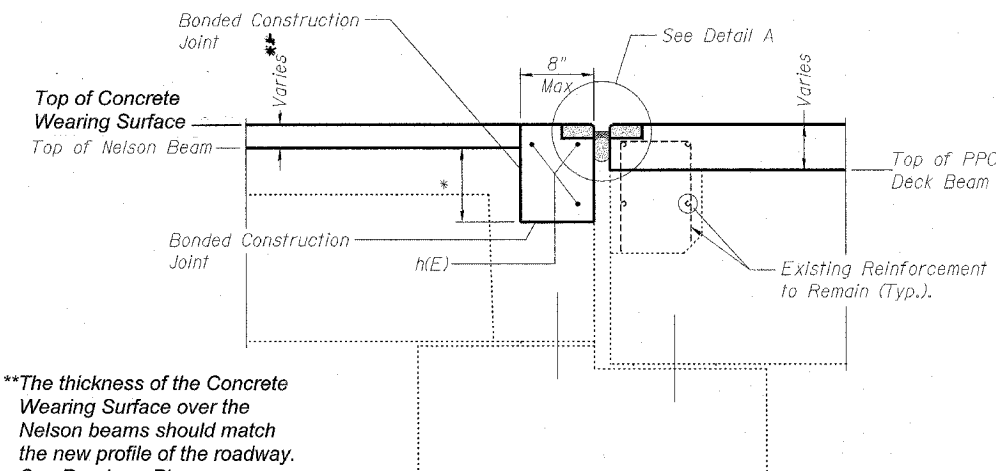


*** PARTIAL DECK PLAN AT WEST ABUTMENT

*** BILL OF MATERIAL				
BAR	No.	SIZE	LENGTH	SHAPE
u(E)	26	#5	2'-10"	
h(E)	6	#5	16'-2"	
h1(E)	4	#5	12'-6"	
REINFORCEMENT BARS, EPOXY COATED			POUNDS	230
CONCRETE REMOVAL			CU. YD.	2.1
CONCRETE SUPERSTRUCTURE			CU. YD.	2.1



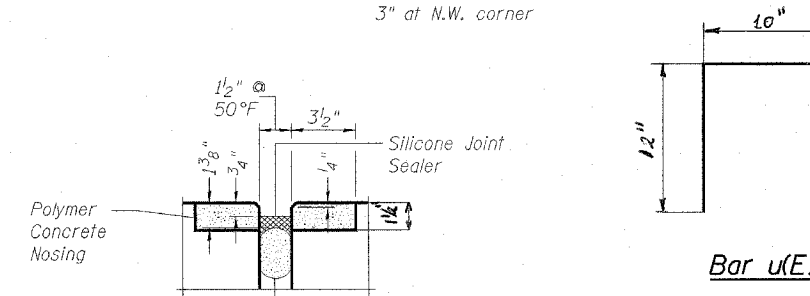
SECTION THRU WEST ABUTMENT CAP (at ϕ Roadway)



SECTION THRU WEST ABUTMENT CAP (at Shoulder)

*8" max at S.W. corner
3" at N.W. corner

**The thickness of the Concrete Wearing Surface over the Nelson beams should match the new profile of the roadway. See Roadway Plans.



DETAIL A

Bar u(E)