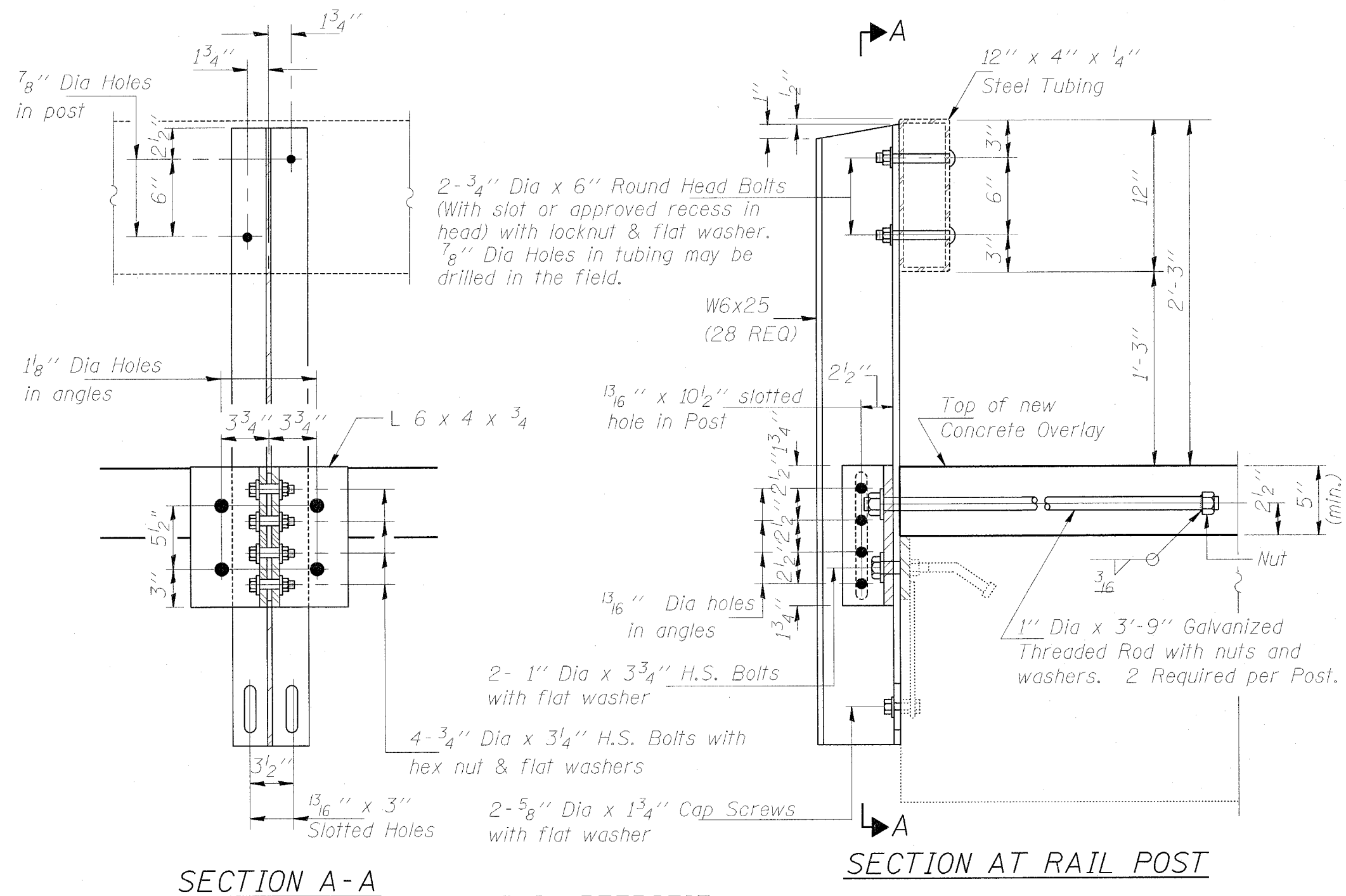


FAP RTE.	SECTION	COUNTY	TOTAL SHEETS	SHEET NO.
777	10(B-1, BR-2)	MONTGOMERY	104	51
STA. _____		TO STA. _____		
FED. ROAD DIST. NO. _____ ILLINOIS FED. AID PROJECT				



2- 3/4" Dia x 6" Round Head Bolts (With slot or approved recess in head) with locknut & flat washer. 7/8" Dia Holes in tubing may be drilled in the field.

W6x25 (28 REQ)

13/16" x 10 1/2" slotted hole in Post

Top of new Concrete Overlay

13/16" Dia holes in angles

2- 1" Dia x 3 3/4" H.S. Bolts with flat washer

1" Dia x 3'-9" Galvanized Threaded Rod with nuts and washers. 2 Required per Post.

4- 3/4" Dia x 3 1/4" H.S. Bolts with hex nut & flat washers

2- 5/8" Dia x 1 3/4" Cap Screws with flat washer

RAIL RETROFIT
(At PPC Deck Beams and Approaches)

NOTE:
ALL NOTES ON SHEET 7 OF 7 FOR THE EXISTING RAIL PLANS SHALL APPLY TO ALL NEW STEEL USED FOR INSTALLATION OF THE NEW RAIL POST, ANGLES AND RELATED HARDWARE SHOWN ABOVE.

ILLINOIS DEPARTMENT OF TRANSPORTATION
RAILING RETROFIT
S.N. 068-0027
FAP 777 (IL 185)
SECTION 10(B-1, BR-2)
MONTGOMERY COUNTY