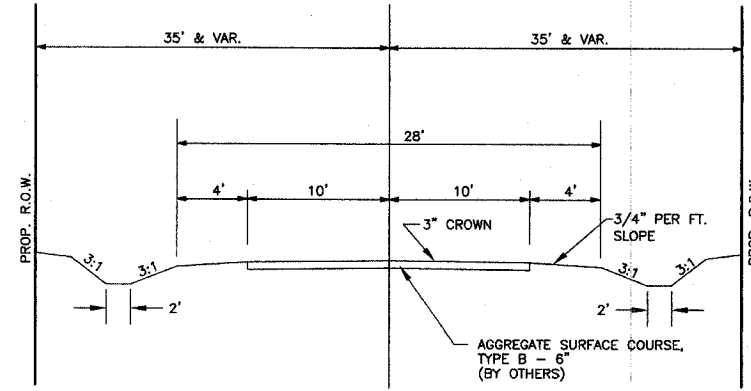
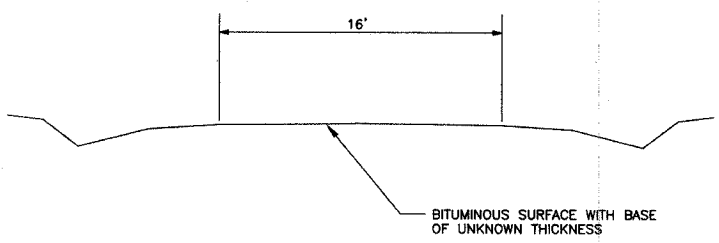


ROUTE	SECTION	COUNTY	TOTAL SHEETS	SHEET NO.
T.R. 214	05-01127-00-BR	JASPER	14	2
CONTRACT NO. 95451		ILLINOIS	PROJECT BROS-079(131)	



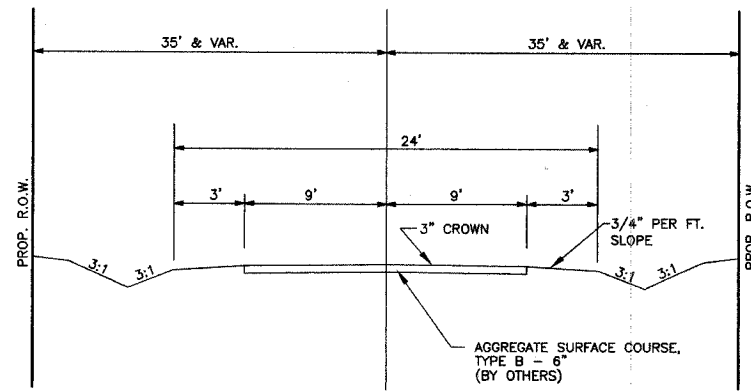
TYPICAL SECTION - MAIN ROAD

PROPOSED



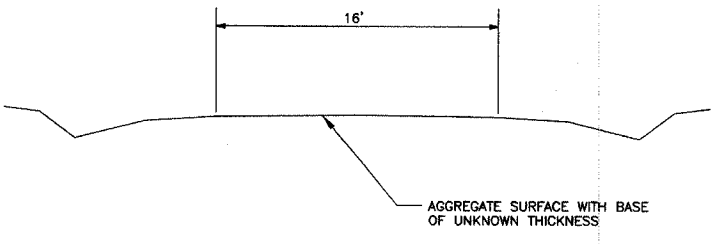
TYPICAL SECTION - MAIN ROAD

EXISTING



TYPICAL SECTION - SIDE ROAD A

PROPOSED



TYPICAL SECTION - SIDE ROAD A

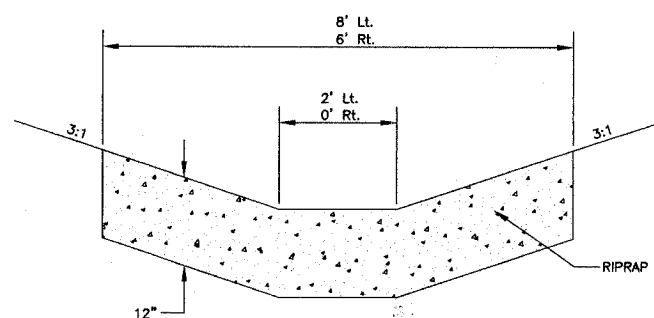
EXISTING

DESIGN DATA

LOCAL ROAD  
ADT = .75

GENERAL NOTES

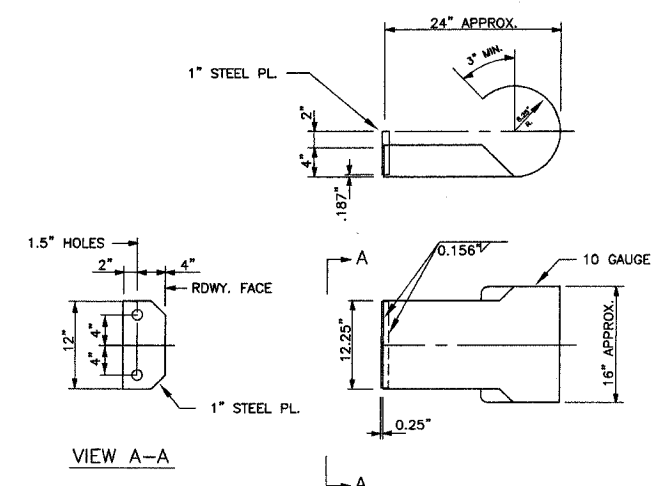
- SEEDING: THIS WORK SHALL BE PERFORMED IN ACCORDANCE WITH THE APPLICABLE PORTIONS OF SECTION 250 OF THE STANDARD SPECIFICATIONS AND SHALL BE PAID FOR AT THE CONTRACT UNIT PRICE FOR SEEDING CLASS 2 (SPECIAL).
    - SPRING SEEDING SHALL EXTEND FROM JANUARY 1 TO JUNE 30
    - FALL SEEDING SHALL EXTEND FROM JULY 1 TO DECEMBER 31
  - FERTILIZER NUTRIENTS SHALL BE APPLIED AT THE RATE OF 100 LB/ACRE
  - MULCHING SHALL BE DONE IN ACCORDANCE WITH ARTICLE 251 OF THE STANDARD SPECIFICATIONS AND SHALL BE DONE BY METHOD 2, PROCEDURE 2 AT THE RATE OF 2 TONS PER ACRE.
2. NO PAYMENT FOR OVERHAUL WILL BE MADE ON THIS SECTION.



STONE RIPRAP DITCH DETAIL

LT. STA. 0+50 TO 2+50  
RT. STA. 0+50 TO 2+30

SUMMARY OF QUANTITIES			X081-2A
CODE NO.	ITEM	UNIT	QUANTITY
20200100	EARTH EXCAVATION	CU YD	190
20300100	CHANNEL EXCAVATION	CU YD	220
20400800	FURNISHED EXCAVATION	CU YD	875
25001000	SEEDING, CLASS 2 (SPECIAL)	ACRE	0.60
28000300	TEMPORARY DITCH CHECKS	EACH	6
28000900	FENCE (EROSION CONTROL)	FOOT	250
28100807	STONE DUMPED RIPRAP, CLASS A4	TON	150
28102600	STONE RIPRAP DITCH	TON	150
35101400	AGGREGATE BASE COURSE, TYPE B	TON	60
50100100	REMOVAL OF EXISTING STRUCTURES	EACH	1
50300225	CONCRETE STRUCTURES	CU YD	22.6
50400605	PRECAST PRESTRESSED CONCRETE DECK BEAMS (33" DEPTH)	SQ FT	2025
50800105	REINFORCEMENT BARS	POUND	2700
50900205	STEEL RAILING, TYPE S1	FOOT	150
51201600	FURNISHING STEEL PILES HP 12X53	FOOT	405
51202700	DRIVING STEEL PILES	FOOT	405
51203600	TEST PILE STEEL HP 12X53	EACH	1
51204315	CONCRETE ENCASEMENT	CU YD	3.4
51500100	NAME PLATES	EACH	1
67100100	MOBILIZATION	L. SUM	1



CURLED END SECTION DETAILS

4 REQUIRED - COST INCIDENTAL TO  
STEEL RAILING, TYPE S-1"