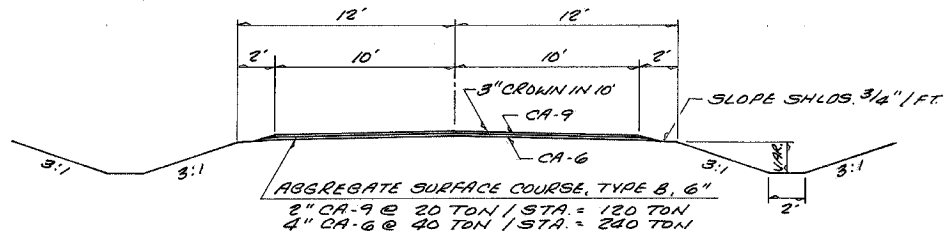
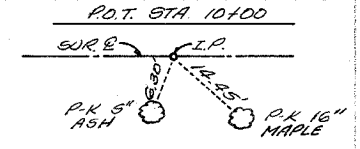
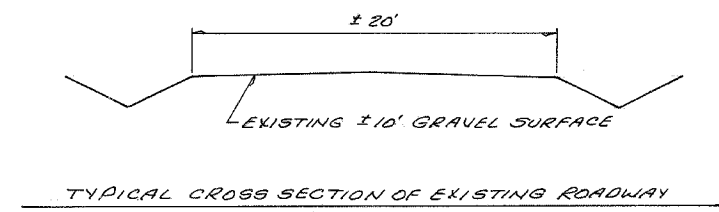


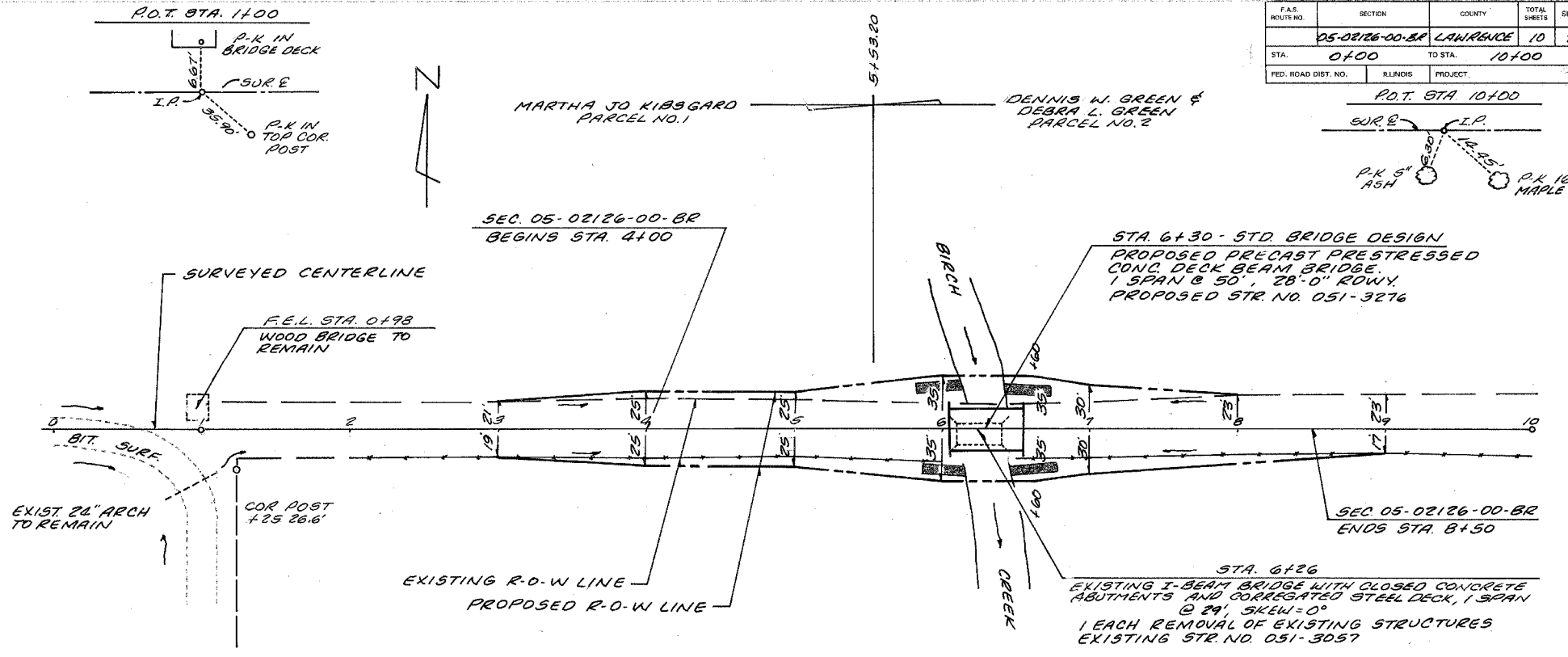
F.A.S. ROUTE NO.	SECTION	COUNTY	TOTAL SHEETS	SHEET
05-02126-00-BR	LAWRENCE		10	2
STA. 0+00	TO STA. 10+00			
FED. ROAD DIST. NO.	ILLINOIS	PROJECT		



TYPICAL CROSS SECTION OF PROPOSED IMPROVEMENT



TYPICAL CROSS SECTION OF EXISTING ROADWAY



KELLY E. SLATER & MARY L. SLATER, CO-TRUSTEES OF REVOCABLE TRUST  
PARCEL NO. 3

**EARTHWORK SCHEDULE**

EARTH EXCAVATION	300 CU. YD.
EARTH EXCAVATION ADJ. 25%	225 CU. YD.
CHANNEL EXCAVATION	92 CU. YD.
CHANNEL EXCAVATION ADJ. 25%	69 CU. YD.
EMBANKMENT	893 CU. YD.
FURNISHED EXCAVATION	399 CU. YD.

B.M. #1 ELEV. 434.10  
P.K. IN COR. POST  
26.6' RT. STA. 1+25

**PERIMETER EROSION BARRIER**  
20' @ EACH COR. OF BRIDGE ON TOP OF CHANNEL  
SLOPE = 80 FEET

**TEMPORARY DITCH CHECKS**  
LT. & RT. 6+00 = 2 EACH  
LT. & RT. 7+00 = 2 EACH  
TOTAL = 4 EACH

**TREE REMOVAL, ACRES**  
RT. STA. 3+00-7+00 = 0.4 AC.  
LT. STA. 5+12-6+18 = 0.1 AC.  
TOTAL = 0.5 AC.

**STONE RIPRAP DITCH**  
LT. 5+82-6+12 = 12 TON  
RT. 5+85-6+15 = 12 TON  
LT. 6+40-6+70 = 12 TON  
RT. 6+45-6+75 = 12 TON  
TOTAL = 48 TON

**CONSTRUCT TRANSITION FROM EXIST. ROWNY TO PROP. 24' ROWNY.** B.M. #2 ELEV. 432.88  
STA. 3+00 TO STA. 4+00 P.K. IN 10" TREE ON E  
STA. 8+00 TO STA. 9+00 STA. 10+50

**FROM PROP. 24' ROWNY TO PROP. 28' ROWNY.**  
STA. 5+55 TO STA. 6+05  
STA. 6+55 TO STA. 7+05

QUANTITIES INCLUDED IN THOSE LISTED

**SEEDING CLASS 2 (SPECIAL)**  
STA. 3+00-7+00 = 0.5 AC.

UTILITIES  
NONE

