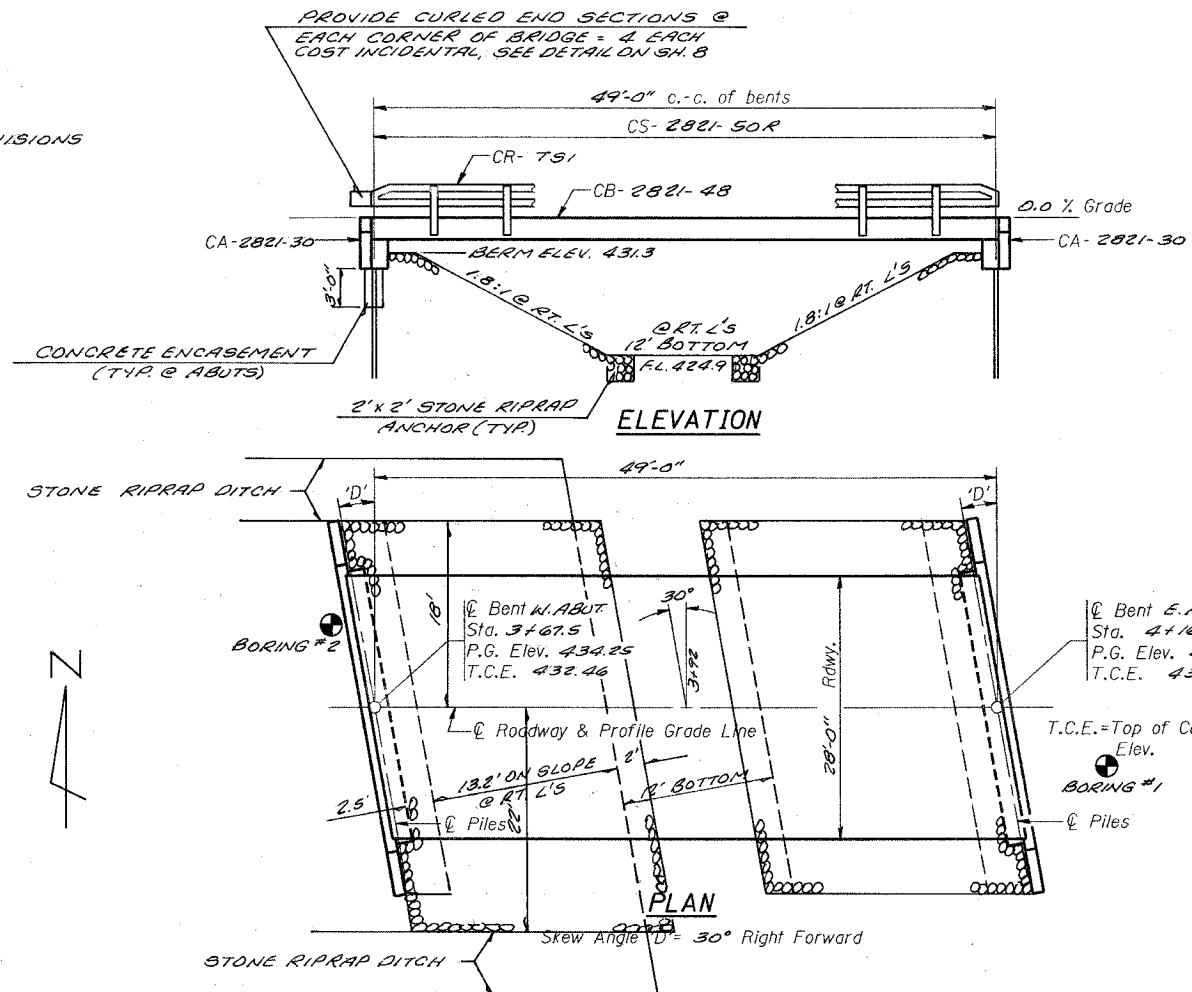


ROUTE NO.	SECTION	COUNTY	TOTAL SHEETS	SHEET NO.
	4	LAWRENCE	10	4
FED. ROAD DIST. NO. 7		ILLINOIS		FED. AID PROJECT
* 05-08132-00-BR				

B.M. Existing Structure

Salvage- SEE SPECIAL PROVISIONS



**GENERAL NOTES**

- The Contractor shall drive 1 test pile, as specified, in a permanent location as directed by the Engineer before ordering the remaining piles.
- See Special Provisions for boring logs.
- A Calcium Nitrite Corrosion Inhibitor, as covered in the Special Provisions, shall be used in the concrete for precast prestressed concrete deck beams.

**TOTAL BILL OF MATERIAL**

Item	Unit	Super	Sub.		Total
			Piers	Abuts.	
Removal of Existing Structures	Each				1
Bituminous Concrete Surface Course, Class I	Ton				
Waterproofing Membrane System	Sq. Yd.				
Concrete Structures	Cu. Yd.			23.0	23.0
Precast Prestressed Concrete Deck Beams (21" Depth)	Sq. Ft.	1400			1400
Steel Bridge Rail, Type SM	Foot				
Steel Railing, Type S-1	Foot	100			100
Reinforcement Bars	Pound			2480	2480
Furnishing METAL PILE SHELLS 12"	Foot			540	540
Driving & FILLING SHELLS	Foot			540	540
Test Piles METAL SHELLS	Each			1	1
Name Plates	Each			1	1
Class SF Concrete Encasement	Cu. Yd.			2.6	2.6
STONE DUMPED RIPRAP CLASS AA	TON				101

**NOTE:**  
The Article or Section numbers referencing the Standard Specifications for Road and Bridge Construction as shown on the standard bridge plan sheets included with the contract plans should be interpreted as referring to the current edition of the Standard Specification (Adopted January 1, 1997) as shown in the 'Article/Section No. Reference Table'.

ARTICLE/SECTION NO. REFERENCE TABLE	
Previous No.	Current No.
504.06	504.06
505.04	505.04
706.05	1006.05
706.32	1006.32
760.07	1060.07

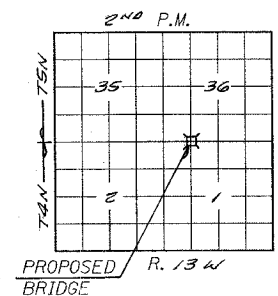
**PILE DATA (2-ABUTS.)**

Type METAL PILE SHELL 12"  
Capacity 33 Tons  
Estimated Length 60 Feet  
Number Required 10 (Includes 1 Test Pile located in Bent #1) WEST ABUT.

STATION 3+92  
EAGLE BRANCH CREEK  
SEC. 05-08132-00-BR BUILT 200  
PROJ. NO. BR05-101(22)  
LAWRENCE COUNTY  
LOADING HS20  
STR. NO. 051-3277

**LETTERING FOR NAME PLATE**

Locate Name Plate at SOUTHWEST Corner of Bridge (See Std. CN)



**LOCATION SKETCH**

**INDEX OF SHEETS**

- General Plan & Elevation
- Standard CS-2821-50R
- Standard CB-2821-48
- Standard CA-2821-30
- Standard CR-791
- Standard CN
- Standard CX-1
- Standard
- Standard

**DESIGN SPECIFICATIONS**

1996 AASHTO,  
HS20-44 Loading. Load Factor Design.

**WATERWAY INFORMATION**

Drainage Area = 1.78 SQ. MI. Low Grade Elev. = 433.2 @ Sta. 7+00						
Flood	Freq. Yr.	C.F.S.	Opening Sq. Ft. Exist.	Prop.	Net. H.W.E. Exist.	Headwater El. Prop.
Design	15	223	139	150	431.3	431.3
Base	100	339	173	190	432.6	432.6
Overtopping						
Max. Calc.	500					

**GENERAL PLAN & ELEVATION**

TR ROUTE 31  
OVER EAGLE BRANCH  
SECTION 05-08132-00-BR  
LAWRENCE COUNTY  
STATION 3+92