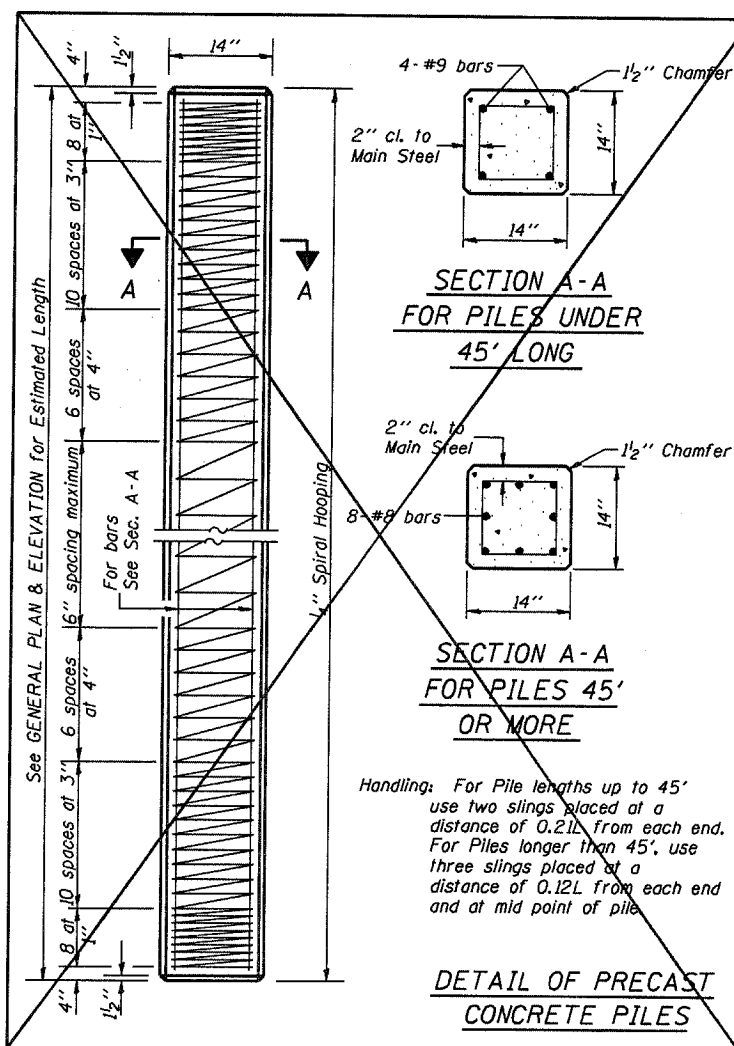


Reinforcement cage shall be omitted when Concrete Encasement is provided.

The cost of Reinforcement is included with the Cost of Furnishing Piles.

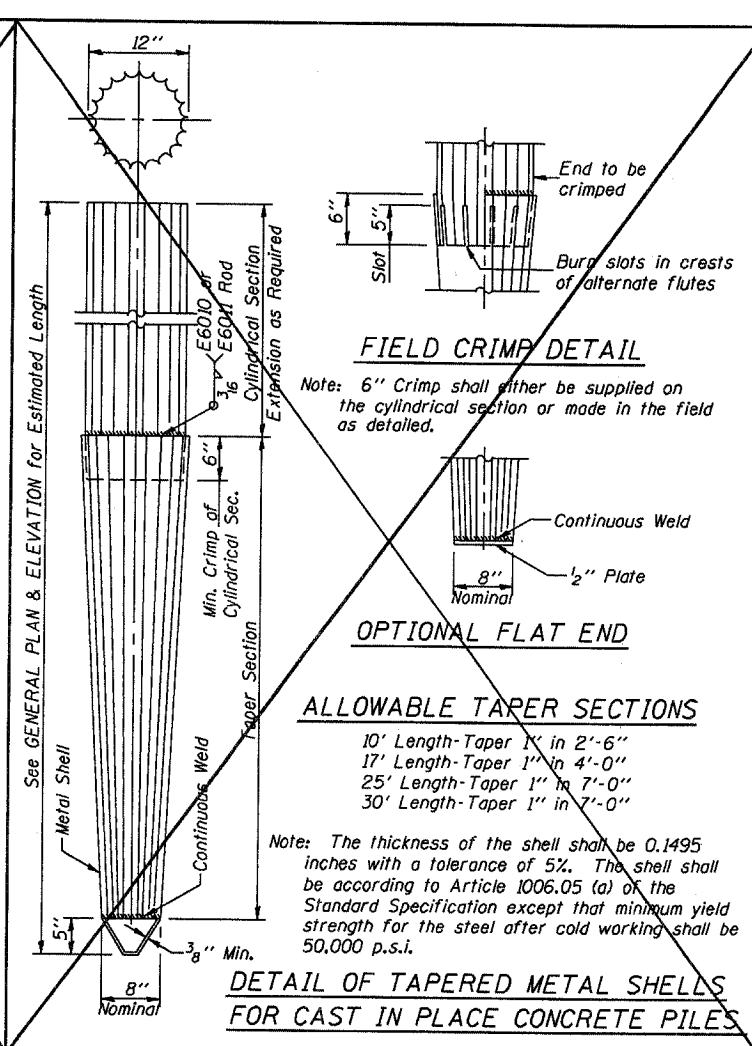


SECTION A-A FOR PILES UNDER 45' LONG

SECTION A-A FOR PILES 45' OR MORE

Handling: For Pile lengths up to 45' use two slings placed at a distance of 0.21L from each end. For Piles longer than 45', use three slings placed at a distance of 0.12L from each end and at mid point of pile.

DETAIL OF PRECAST CONCRETE PILES



FIELD CRIMP DETAIL

Note: 6" Crimp shall either be supplied on the cylindrical section or made in the field as detailed.

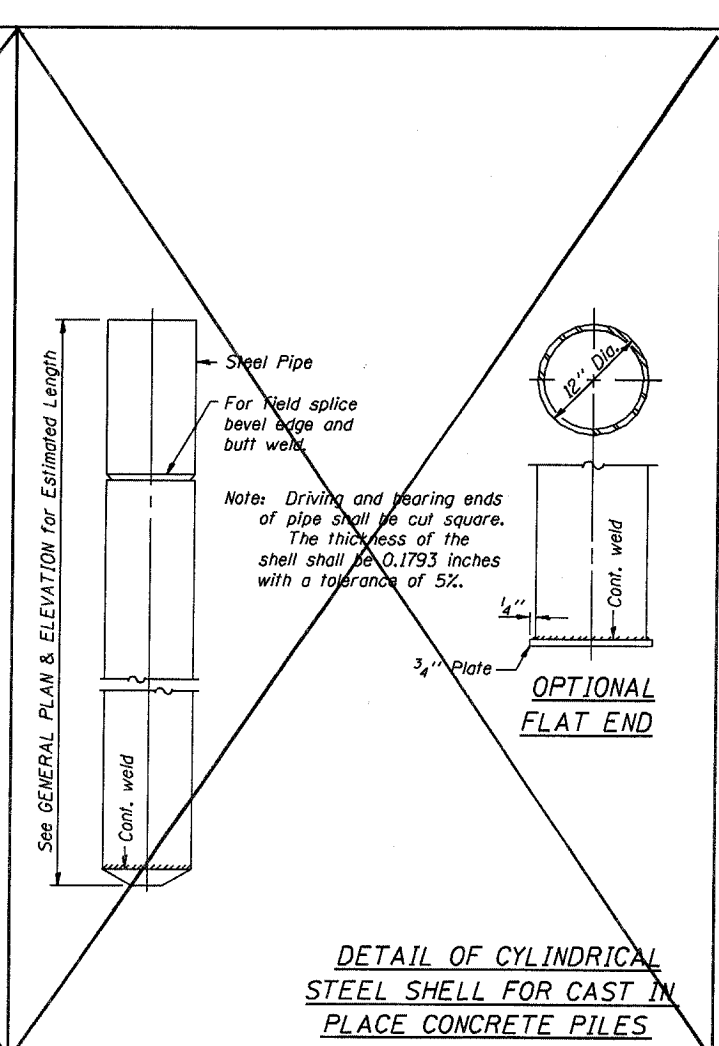
OPTIONAL FLAT END

ALLOWABLE TAPER SECTIONS

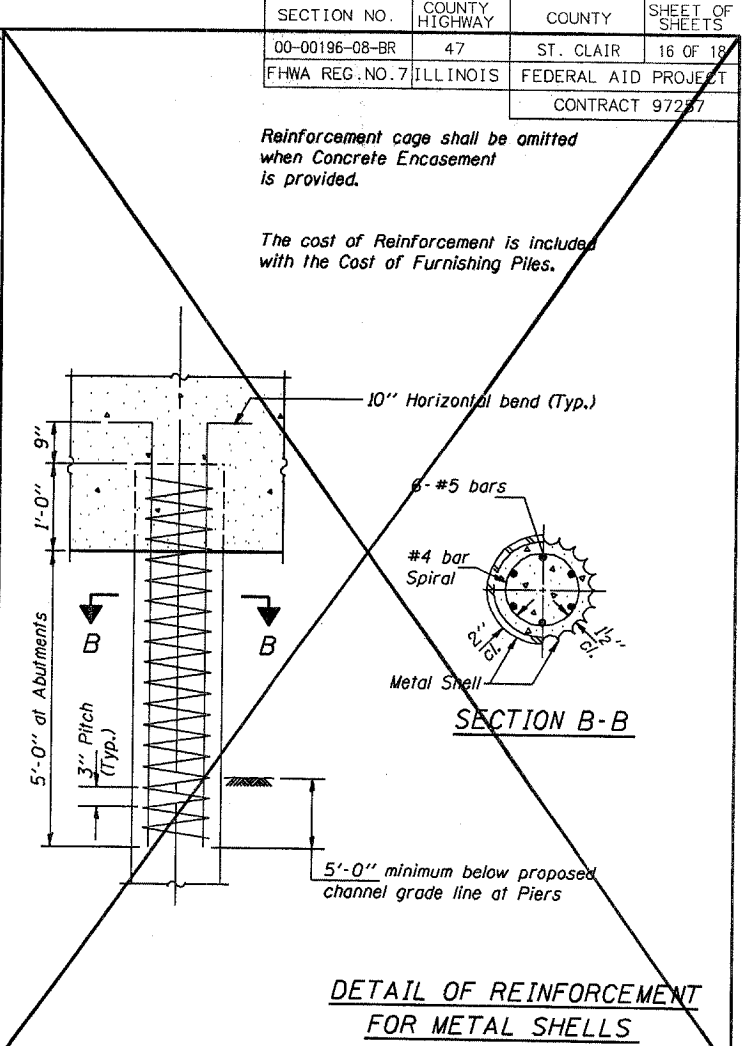
- 10' Length-Taper 1" in 2'-6"
- 17' Length-Taper 1" in 4'-0"
- 25' Length-Taper 1" in 7'-0"
- 30' Length-Taper 1" in 7'-0"

Note: The thickness of the shell shall be 0.1495 inches with a tolerance of 5%. The shell shall be according to Article 1006.05 (a) of the Standard Specification except that minimum yield strength for the steel after cold working shall be 50,000 p.s.i.

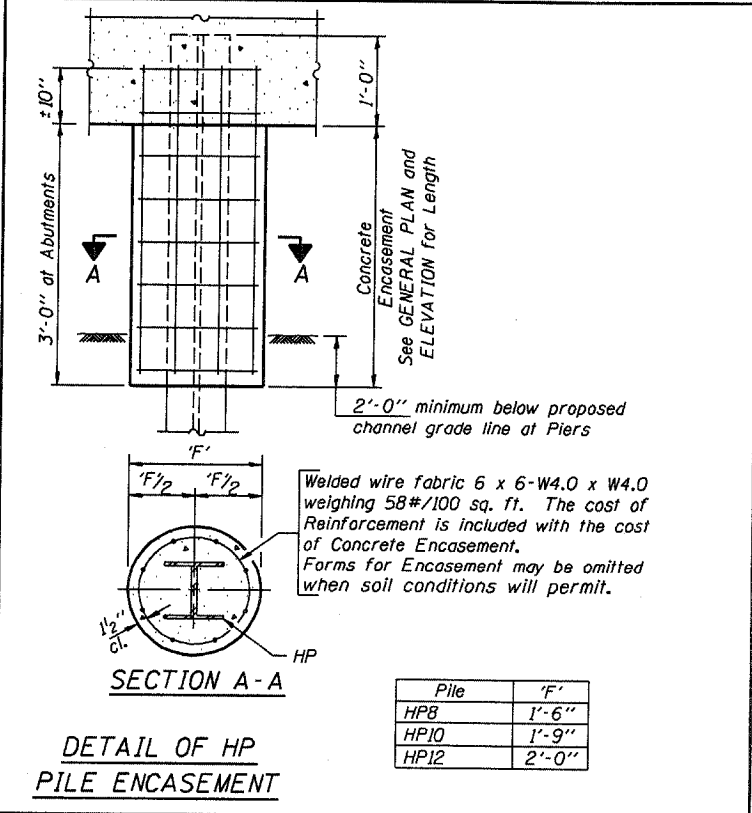
DETAIL OF TAPERED METAL SHELLS FOR CAST IN PLACE CONCRETE PILES



DETAIL OF CYLINDRICAL STEEL SHELL FOR CAST IN PLACE CONCRETE PILES

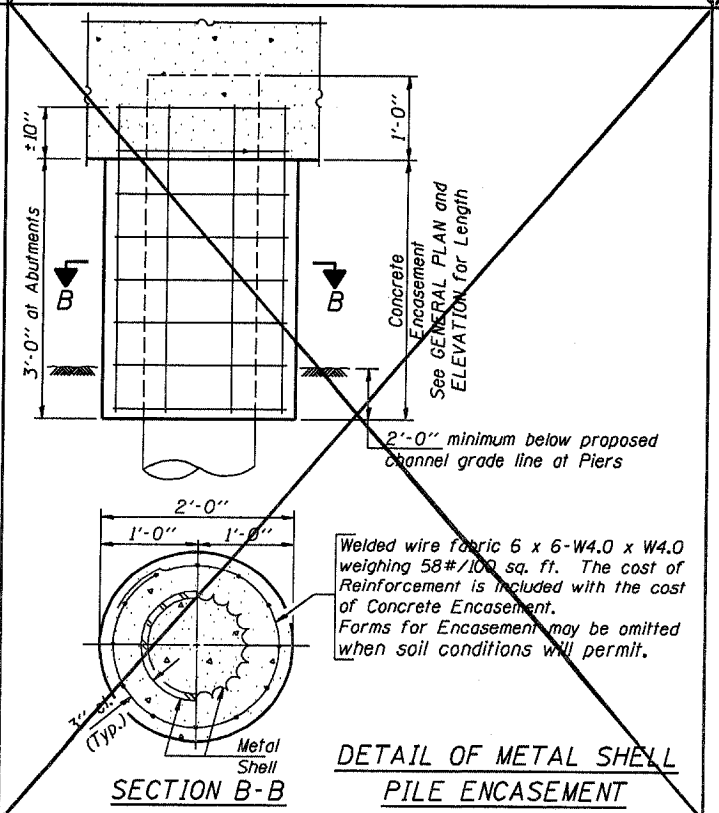


DETAIL OF REINFORCEMENT FOR METAL SHELLS



DETAIL OF HP PILE ENCASEMENT

Pile	'F'
HP8	1'-6"
HP10	1'-9"
HP12	2'-0"



DETAIL OF METAL SHELL PILE ENCASEMENT

QUANTITIES/FT. OF ENCASEMENT (STEEL PILES)

Pile Size	Item	Quantity
HP8	Concrete Encasement	0.063 C.Y.
HP10	Concrete Encasement	0.086 C.Y.
HP12	Concrete Encasement	0.112 C.Y.

(METAL SHELL PILES)

Pile Size	Item	Quantity
12" Dia.	Concrete Encasement	0.087 C.Y.

Illinois Department of Transportation
 PASSED FEBRUARY 1, 2000
 (Theresa Demagala)
 Engineer of Bridge Design
 APPROVED FEBRUARY 1, 2000
 (Ralph E. Anderson)
 Engineer of Bridges and Structures

PILE DETAILS
 STANDARD CX-1