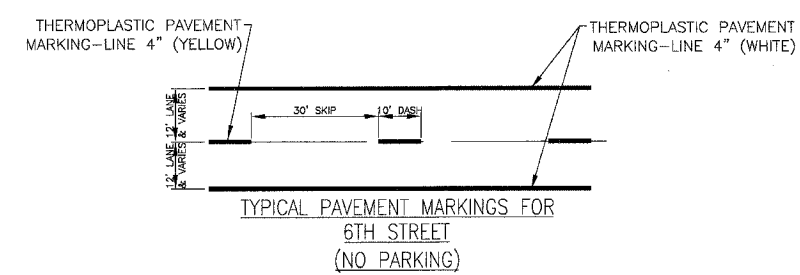
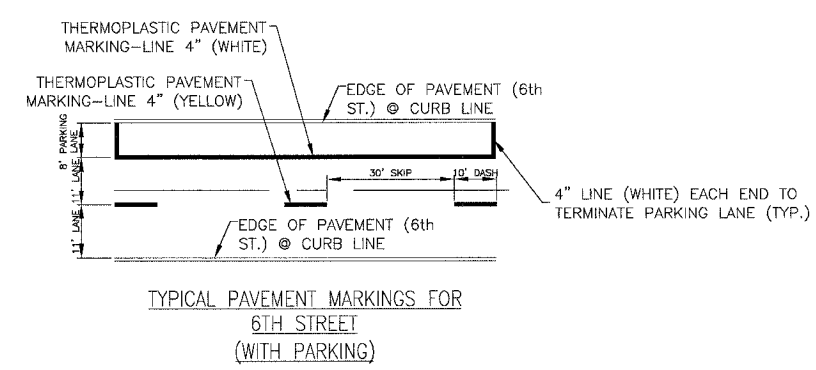
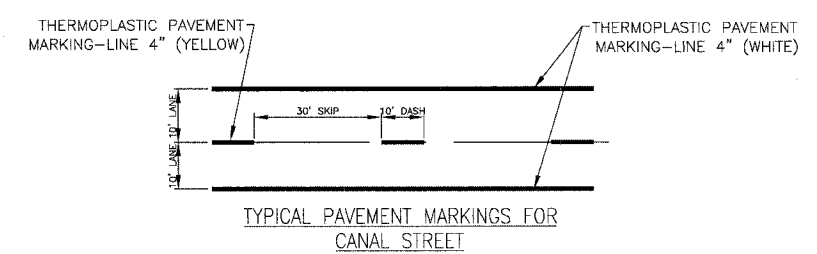
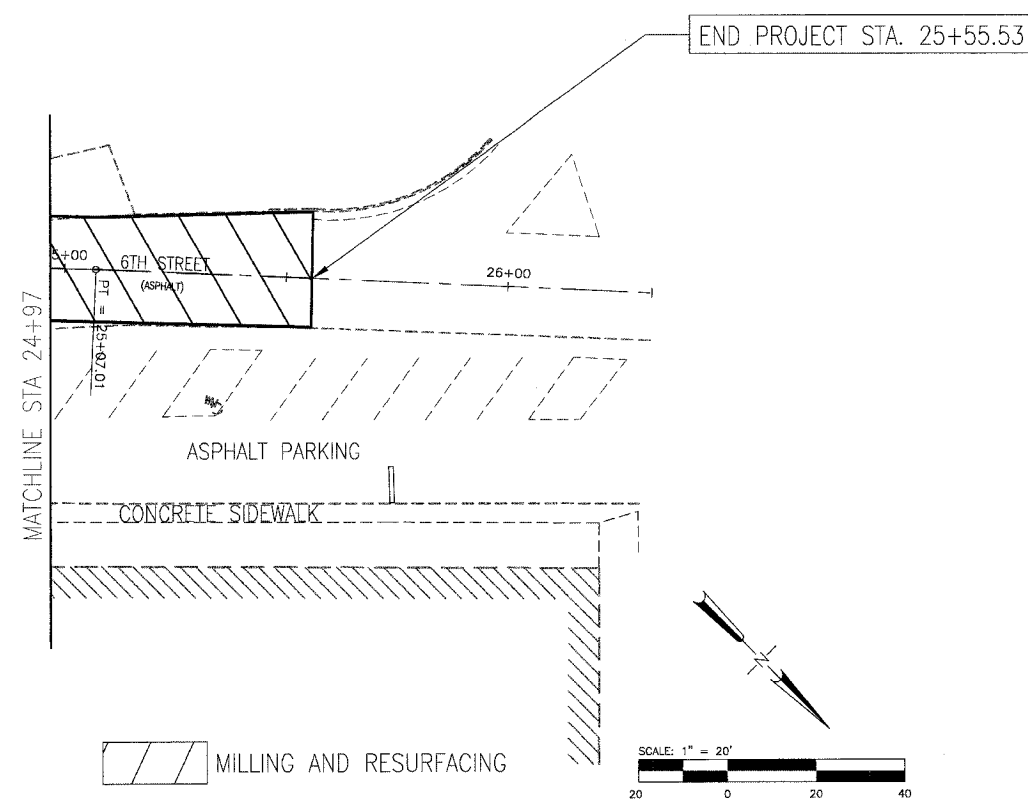


F.A. DIST.	SECTION	COUNTY	TOTAL SHEETS	SHEET NO.
9141/9142	05-00022-00-RS	ST. CLAIR	9	9
STA. 24+87.00	TO STA. 25+55.53			
FED. ROAD DIST. NO.	LENGHS	FED. AID PROJECT		
CONTRACT NO. 97266				



PAVEMENT MARKING DETAIL

REVISIONS	
NAME	DATE

ILLINOIS DEPARTMENT OF TRANSPORTATION
PLAN SHEETS
SHEET 5 OF 5
 F.A.U. 9141 (CANAL STREET)
 F.A.U. 9142 (6TH STREET)
 SECTION 05-00022-00-RS
 ST. CLAIR & MADISON COUNTY

SCALE: 1" = 20'
 DATE: DECEMBER 5, 2005

DRAWN BY: JEH
 CHECKED BY: RCY