

STATE OF ILLINOIS
DEPARTMENT OF TRANSPORTATION
DIVISION OF HIGHWAYS

F. A. RTE.	SECTION	COUNTY	TOTAL SHEETS	SHEET NO.
9141/9142	05-00022-00-RS	ST. CLAIR	9	1

FEDERAL AID PROJECT
CONTRACT NO. 97266

LIST OF HIGHWAY STANDARDS

- 420001-06
- 420701-01
- 424001-04
- 442101-05
- 606001-02
- 701501-03
- 701801-03
- 702001-05
- 780001-01

INDEX OF SHEETS

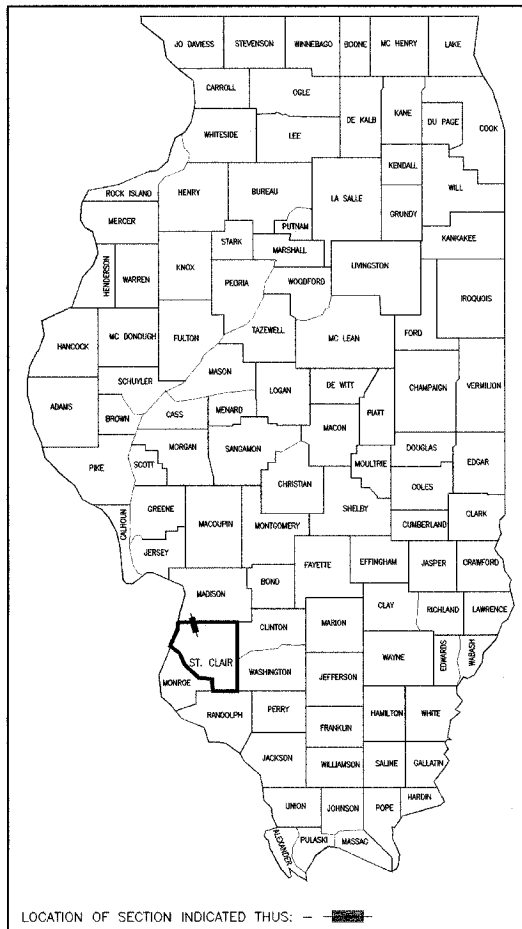
- 1 COVER
- 2 SOQ & GENERAL NOTES
- 3 TYPICAL SECTIONS
- 4 SCHEDULES & DETAILS
- 5-9 PLAN SHEETS
- 9 PAVEMENT MARKING DETAIL

UTILITY COMPANIES

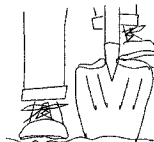
Telephone: SBC-Ameritech 203 Goethe Collinsville, IL 62234 (618)346-6420	Water: Illinois American Water Co. 300 N. Waterworks Dr. Belleville, IL 62223 (618)277-9887
Gas & Electric: Ameren IP 1050 West Blvd. Belleville, IL 62221 (800)755-5000	Fiber Optic: 360 Networks (416)848-2288
Cable Television: Charter Communications 317 West Main Belleville, IL 62220 (618)277-0760	Fiber Optic: McLeod USA 102 E. Shafer St. Forsyth, IL 63525 (618)876-7194

PLANS FOR PROPOSED
6TH AND CANAL STREET RESURFACING

(F.A.U. 9141) 6TH STREET FROM CANAL STREET TO IL RTE. 3 AND
(F.A.U. 9142) CANAL STREET FROM IL RTE. 3 (2ND STREET) TO 8TH STREET
SECTION 05-00022-00-RS
PROJECT: M-5011 (193)
JOB NO. C-98-303-06
VILLAGE OF BROOKLYN
ST. CLAIR AND MADISON COUNTY



HOLD IT! CALL BEFORE YOU DIG!
Phone J.U.L.I.E.



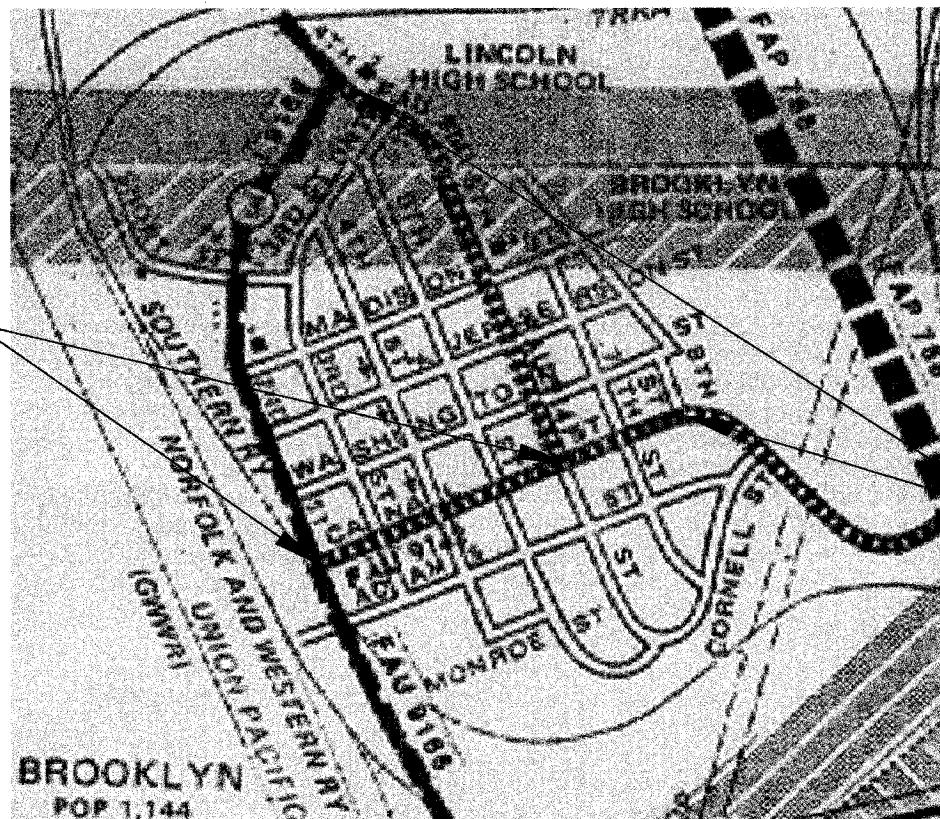
Underground Cable

The owner would like to remind you that underground utility facilities can be damaged by shovel blades or other digging equipment. You can prevent damage or possible personal danger by phoning 800/892-0123 at least 48 hours before you dig. That's the toll-free number for 'J.U.L.I.E.', which stands for Joint Utilities Location Information for Excavators.

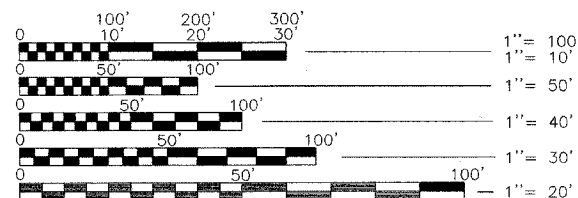
If there are any pipes, cables, lines or mains in the excavation area, utility personnel will be out to mark the facilities so you can work around them.

Toll Free 800/892-0123

BEGIN PROJECT
6TH 5+20.00
CANAL 100+24.62



END PROJECT
6TH 25+55.53
CANAL 118+40.00



FULL SIZE PLANS HAVE BEEN PREPARED USING STANDARD ENGINEERING SCALES, REDUCED SIZED PLANS WILL NOT CONFORM TO STANDARD SCALES, IN MAKING MEASUREMENTS ON REDUCED PLANS, THE ABOVE SCALES MAY BE USED.

6TH STREET = 2,035.53 FT = 0.386 MILES
CANAL STREET = 1,815.38 FT = 0.344 MILES
NET PROJECT LENGTH = 3,850.91 FT. = 0.730 MILES
DESIGN DESIGNATION = MINOR ARTERIAL
DESIGN TRAFFIC: 1100 TO 1300 ADT
DESIGN SPEED = 35 MPH

CONTRACT NO. 97266

STATE OF ILLINOIS
DEPARTMENT OF TRANSPORTATION
DIVISION OF HIGHWAYS

APPROVED December 5, 2005
Norman O'Brien Village of Brooklyn, Mayor

PASSED 1-4, 20 06
Jennifer Christman District Engineer, Local Roads and Streets

APPROVED 1-4, 20 06
Mary C. Lamm Deputy Director of Highways Region Five Engineer

RONALD C. YEAGER
LICENSED PROFESSIONAL ENGINEER
STATE OF ILLINOIS

KdG
Kuhlmann Design Group, Inc.
15 E. Washington St.
Belleville, IL 62220-2149
Tel: (618) 254-8816

Ronald C. Yeager 12/05/05
P.E. 062-038479 RONALD C. YEAGER DATE
EXP. 11/30/2007

DECEMBER 5, 2005

F.A. DIST. NO.	SECTION	COUNTY	TOTAL SHEETS	SHEET NO.
9141/9142	05-00022-00-RS	ST. CLAIR	9	2
STA.	TO STA.			
FED. ROAD DIST. NO.	U.S. HIGHWAY	FED. AID PROJECT		
CONTRACT NO. 97266				

SUMMARY OF QUANTITIES			
ITEM NO.	ITEM	UNIT	QUANTITY
40600100	BITUMINOUS MATERIALS (PRIME COAT)	GALLON	1063
40600300	AGGREGATE (PRIME COAT)	TON	20
40600980	BITUMINOUS SURFACE REMOVAL - BUTT JOINT	SQ YD	221
40600990	TEMPORARY RAMP	SQ YD	420
42400100	PORTLAND CEMENT CONCRETE SIDEWALK 4 INCH	SQ FT	284
42400800	DETECTABLE WARNINGS	SQ FT	32
44000006	BITUMINOUS SURFACE REMOVAL 1-1/2"	SQ YD	9869
44000300	CURB REMOVAL	FOOT	50
44000600	SIDEWALK REMOVAL	SQ FT	284
44200966	CLASS B PATCHES, TYPE I, 10 INCH	SQ YD	26
44200970	CLASS B PATCHES, TYPE II, 10 INCH	SQ YD	47
44200974	CLASS B PATCHES, TYPE III, 10 INCH	SQ YD	17
44213100	PAVEMENT FABRIC	SQ YD	90
48101200	AGGREGATE SHOULDER, TYPE B	TON	169
60300305	FRAMES AND LIDS TO BE ADJUSTED	EACH	3
60600605	CONCRETE CURB, TYPE B	FOOT	50
67100100	MOBILIZATION	L SUM	1
70101700	TRAFFIC CONTROL AND PROTECTION	L SUM	1
70300100	SHORT-TERM PAVEMENT MARKING	FOOT	400
70301000	WORK ZONE PAVEMENT MARKING REMOVAL	SQ FT	133
72000100	SIGN PANEL - TYPE 1	SQ FT	13.5
72900100	METAL POST - TYPE A	FOOT	90
* 78000200	THERMOPLASTIC PAVEMENT MARKING - LINE 4"	FOOT	6111
* 78000400	THERMOPLASTIC PAVEMENT MARKING - LINE 6"	FOOT	259
* 78000600	THERMOPLASTIC PAVEMENT MARKING - LINE 12"	FOOT	367
* 78000650	THERMOPLASTIC PAVEMENT MARKING - LINE 24"	FOOT	55
X4066526	POLYMERIZED BITUMINOUS CONCRETE SURFACE COURSE SUPERPAVE MIX D, N70	TON	941
X4066770	LEVELING BINDER, (MACHINE METHOD), SUPERPAVE, N70	TON	181
XX004949	INCIDENTAL BITUMINOUS SURFACING, SUPERPAVE	TON	193
Z0013798	CONSTRUCTION LAYOUT	L SUM	1

* DENOTES SPECIALTY ITEM.

NOTE:
 THE FACTOR USED TO DETERMINE QUANTITY BITUMINOUS MATERIALS (PRIME COAT) = 0.08 GAL/SQ YD
 THE FACTOR USED TO DETERMINE QUANTITY AGGREGATE (PRIME COAT) = 3.0 POUND/SQ YD
 THE FACTOR USED TO DETERMINE QUANTITY BITUMINOUS CONCRETE SURFACE = 112 POUNDS/SQ YD\INCH
 THE FACTOR USED TO DETERMINE QUANTITY INCIDENTAL BITUMINOUS SURFACE = 112 POUNDS/SQ YD\INCH

MIXTURE REQUIREMENTS SUPERPAVE PROJECT			
MIXTURE USE	SURFACE	INCIDENTAL	L-BINDER
AC/PG	SBS PG 70-22	PG 64-22	PG 64-22
RAP%(MAX.)	10%	15%	15%
DESIGN AIR VOIDS	4.0%@Ndes=70	4.0%@Ndes=70	4.0%@Ndes=70
MIX COMPOSITION	IL 12.5	IL 12.5	IL 9.5
FRICITION AGG	MIXTURE D	MIXTURE D	MIXTURE D

GENERAL NOTES

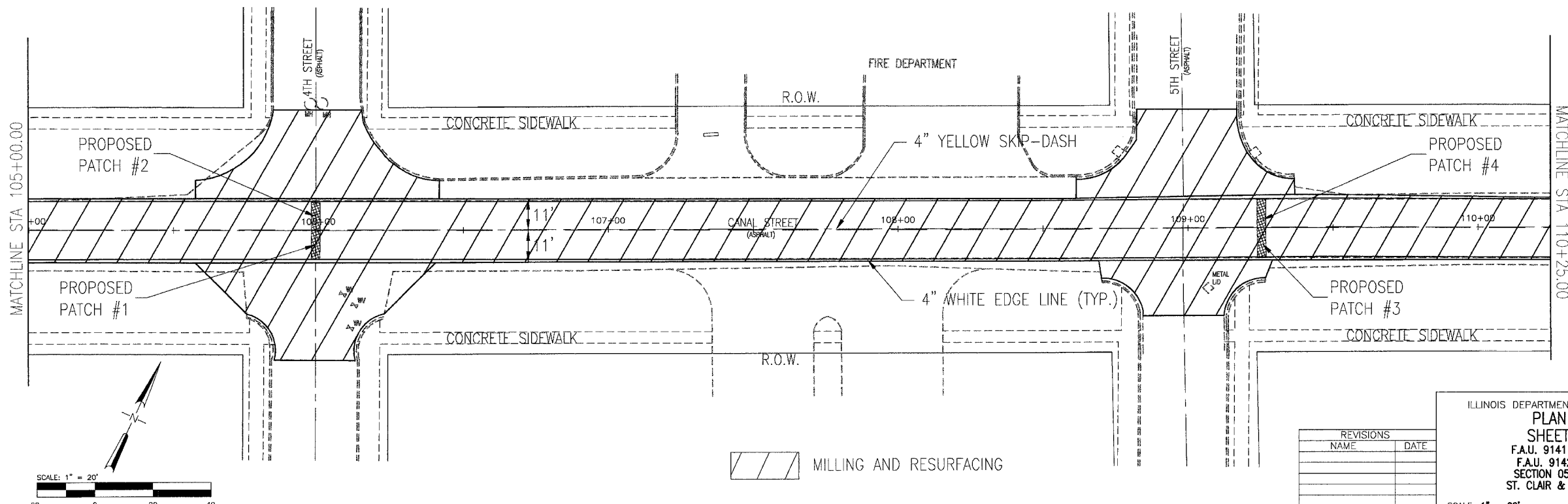
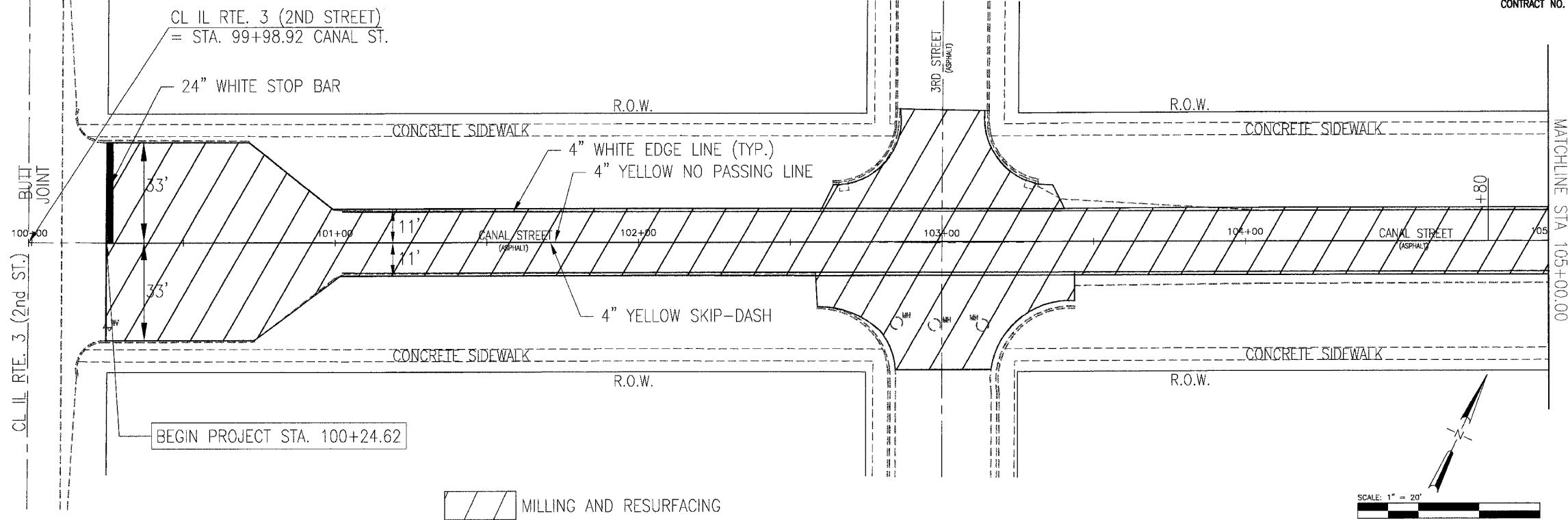
1. THE CONTRACTOR SHALL COMPLETE THE PAVING PORTION OF THIS CONTRACT IN A TIMELY MANNER. REFER TO THE SPECIAL PROVISIONS FOR TIME LIMITS AND ADDITIONAL REQUIRMENTS.
2. THE CONTRACTOR MUST RESPOND TO "EMERGENCY" REPAIRS IMMEDIATELY AND TO "NON-EMERGENCY" REPAIRS WITHIN ONE WORKING DAY. THE VILLAGE OF BROOKLYN RESERVES THE RIGHT TO HIRE AN INDEPENDENT CONTRACTOR TO MAKE SUCH REPAIRS AND DEDUCT THE COST FROM THE CONTRACT IF THE CONTRACTOR DOES NOT ADDRESS REPAIRS WITHIN THESE TIME LINES.
3. THE CONTRACTOR SHALL VERIFY ALL DIMENSIONS AND CONDITIONS IN THE FIELD PRIOR TO ORDERING MATERIALS AND COMMENCING CONSTRUCTION.
4. THE CONTRACTOR SHALL MILL EXISTING BITUMINOUS AND CONCRETE PATCHES TO MATCH SUB-BASE ELEVATION AND CROSS-SLOPE. THIS WORK WILL BE PAID FOR AT THE CONTRACT UNIT PRICE PER SQUARE YARD FOR BITUMINOUS SURFACE REMOVAL 1-1/2", AND NO ADDITIONAL COMPENSATION WILL BE ALLOWED.
5. THE CONTRACTOR SHALL CONFINE ALL OPERATIONS TO THE AREA LOCATED WITHIN THE EXISTING RIGHT OF WAY. ANY AREA DISTURBED BEYOND THESE LIMITS SHALL BE RESTORED TO ITS ORIGINAL CONDITION AT THE CONTRACTOR'S EXPENSE.
6. THE CONTRACTOR SHALL MAINTAIN ACCESS TO ALL PROPERTIES WHILE RECONSTRUCTING ENTRANCES. THIS MAY BE ACCOMPLISHED BY STAGING ENTRANCE REMOVAL AND REPLACEMENT HALF-WIDTH AT A TIME. THE CONTRACTOR IS RESPONSIBLE FOR COORDINATING HIS ACTIVITIES WITH THE PROPERTY OWNERS CONCERNING ACCESS AND RELATED MATTERS.
7. THE CONTRACTOR SHALL SAW CUT EXISTING CURBS, SIDEWALKS, DRIVEWAYS AND PAVEMENTS TO BE REMOVED AT LOCATIONS SHOWN ON THE PLANS. ALL SAW CUTS SHALL BE FULL-DEPTH TO AVOID DAMAGING ADJACENT MATERIALS TO REMAIN IN PLACE. SAW CUTS WILL NOT BE PAID FOR SEPERATELY AND SHALL BE INCLUDED IN THE CONTRACT UNIT PRICE FOR THE ITEMS TO BE REMOVED.
8. THE COST OF EARTH EXCAVATION, EARTH BACKFILL, SEEDING, AND MULCHING REQUIRED TO CONSTRUCT SIDEWALKS AND CURBS WILL, NOT BE PAID FOR SEPERATELY AND SHALL BE INCLUDED IN THE COST OF THE ASSOCIATED ITEMS.
9. THE PAVEMENT MARKING LOCATIONS SHOWN IN THE PLANS ARE APROXIMATE. PROPOSED CROSSWALKS AND STOP BARS SHALL BE ADJUSTED BY THE CONTRACTOR, IF NECESSARY, TO MATCH FIELD CONDITIONS.
10. SHORT TERM PAVEMENT MARKINGS SHALL BE FURNISHED AND INSTALLED AFTER BITUMINOUS SURFACE REMOVAL AND PLACING LEVELING BINDER AT THE CENTERLINE OF CANAL STREET AND 6TH STREET.

REVISIONS	
NAME	DATE

ILLINOIS DEPARTMENT OF TRANSPORTATION
SUMMARY OF QUANTITIES
GENERAL NOTES
 F.A.U. 9141 (CANAL STREET)
 F.A.U. 9142 (6TH STREET)
 SECTION 05-00022-00-RS
 ST. CLAIR & MADISON COUNTY

SCALE: _____ DRAWN BY: **JEH**
 DATE: **DECEMBER 5, 2005** CHECKED BY: **RCY**

F.A. NO.	SECTION	COUNTY	TOTAL SHEETS	SHEET NO.
9141/9142	05-0022-00-RS	ST. CLAIR	9	5
STA. 99+98.92		TO STA. 110+25.00		
FED. ROAD DIST. NO.	KMHS	FED. AID PROJECT		
CONTRACT NO. 97266				

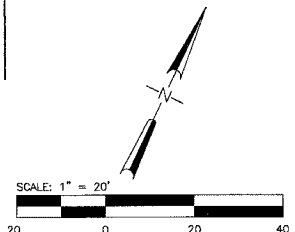
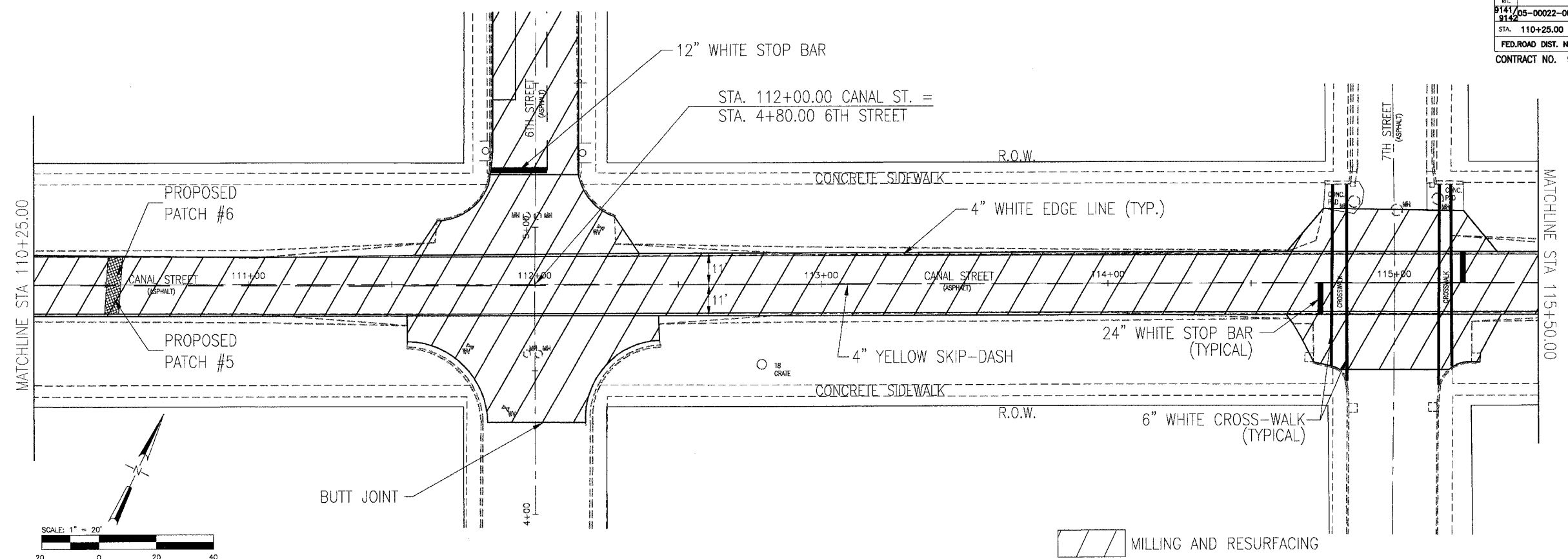


REVISIONS	
NAME	DATE

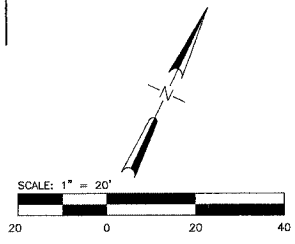
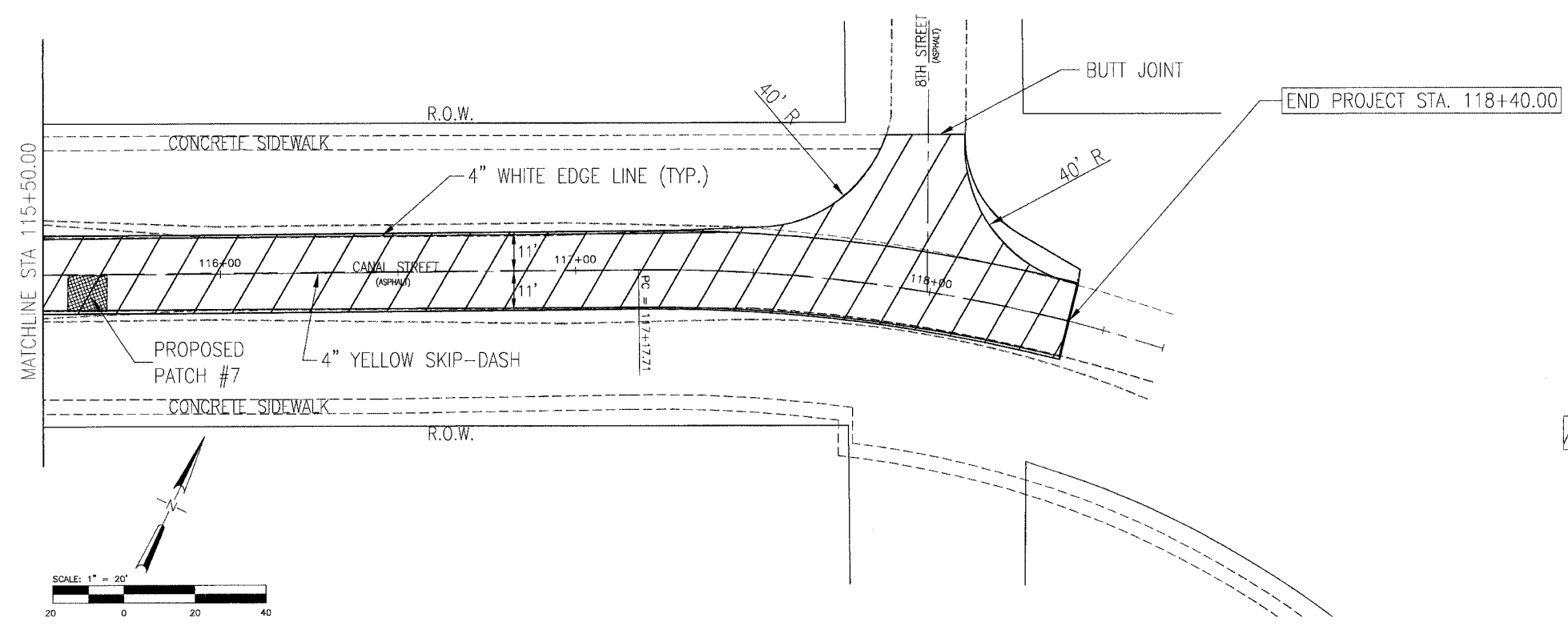
ILLINOIS DEPARTMENT OF TRANSPORTATION
PLAN SHEETS
SHEET 1 OF 5
 F.A.U. 9141 (CANAL STREET)
 F.A.U. 9142 (6TH STREET)
 SECTION 05-0022-00-RS
 ST. CLAIR & MADISON COUNTY

SCALE: 1" = 20'
 DATE: DECEMBER 5, 2005
 DRAWN BY: JEH
 CHECKED BY: RCY

F.A.U. NO.	SECTION	COUNTY	TOTAL SHEETS	SHEET NO.
9141/9142	05-0022-00-RS	ST. CLAIR	9	6
STA. 110+25.00	TO STA. 118+40.00			
FED. ROAD DIST. NO.	LAUREL	FED. AID PROJECT		
CONTRACT NO. 97266				



MILLING AND RESURFACING



MILLING AND RESURFACING

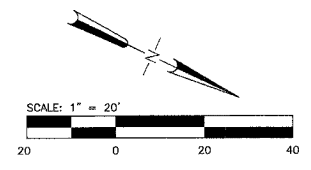
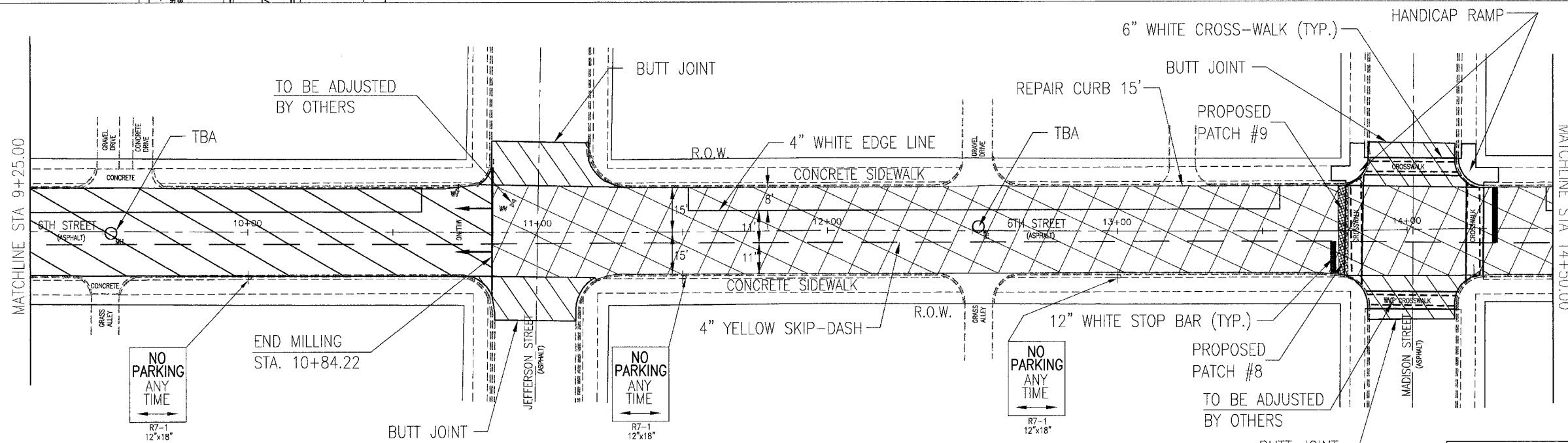
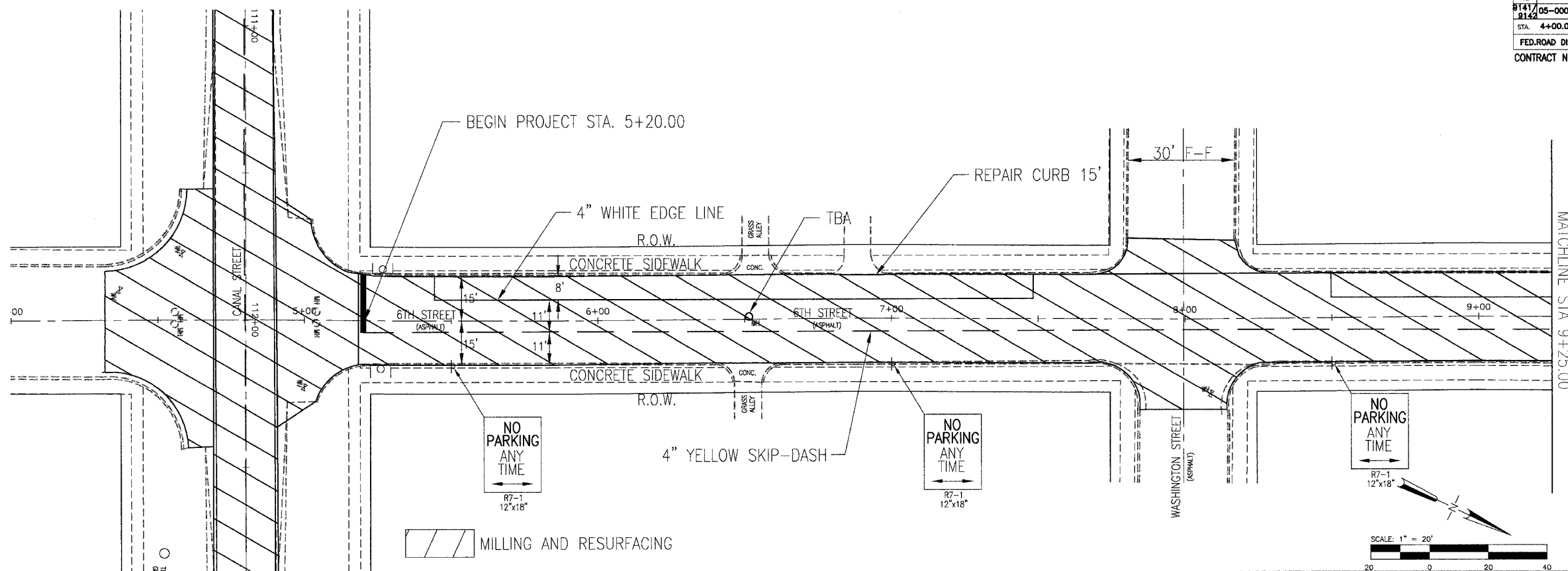
REVISIONS	
NAME	DATE

ILLINOIS DEPARTMENT OF TRANSPORTATION
PLAN SHEETS
SHEET 2 OF 5
 F.A.U. 9141 (CANAL STREET)
 F.A.U. 9142 (6TH STREET)
 SECTION 05-0022-00-RS
 ST. CLAIR & MADISON COUNTY

SCALE: 1" = 20'
 DATE: DECEMBER 5, 2005

DRAWN BY: JEH
 CHECKED BY: RCY

F.A. DIST.	SECTION	COUNTY	TOTAL SHEETS	SHEET NO.
9141/05-00022-00-RS	ST. CLAIR		9	7
STA. 4+00.00	TO STA. 14+50.00			
FED. ROAD DIST. NO.	BLANDS	FED. AID PROJECT		
CONTRACT NO. 97266				



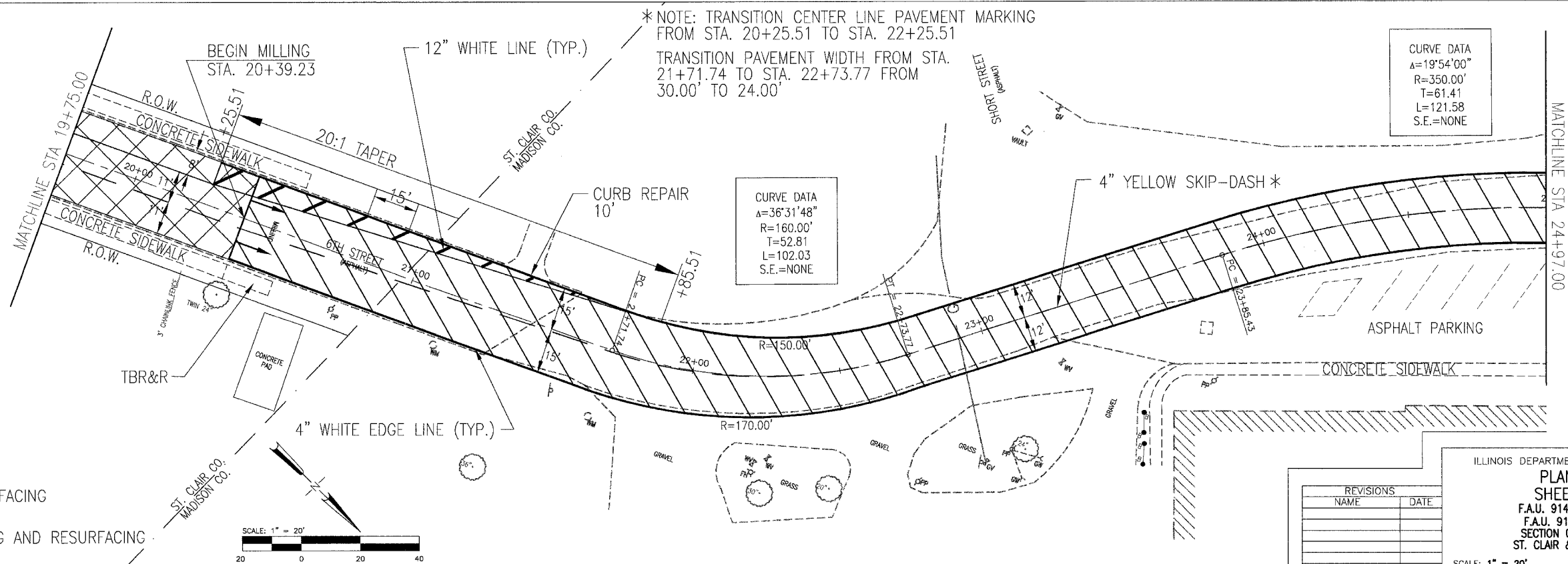
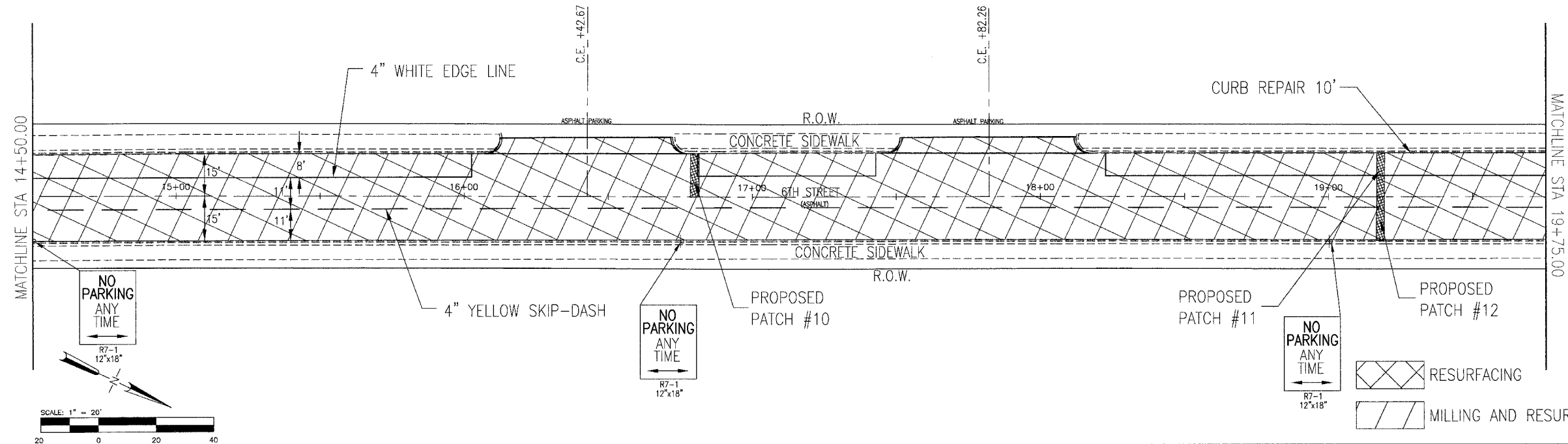
- RESURFACING
- MILLING AND RESURFACING

REVISIONS	
NAME	DATE

ILLINOIS DEPARTMENT OF TRANSPORTATION
PLAN SHEETS
SHEET 3 OF 5
 F.A.U. 9141 (CANAL STREET)
 F.A.U. 9142 (6TH STREET)
 SECTION 05-00022-00-RS
 ST. CLAIR & MADISON COUNTY

SCALE: 1" = 20'
 DATE: DECEMBER 5, 2005
 DRAWN BY: JEH
 CHECKED BY: RCY

F.A. NO.	SECTION	COUNTY	TOTAL SHEETS	SHEET NO.
9141/8142	05-00022-00-RS	ST. CLAIR	9	8
STA.	TO STA.	FED. ROAD DIST. NO.		
14+50.00	23+00.00	FED. AID PROJECT		
CONTRACT NO. 97266				

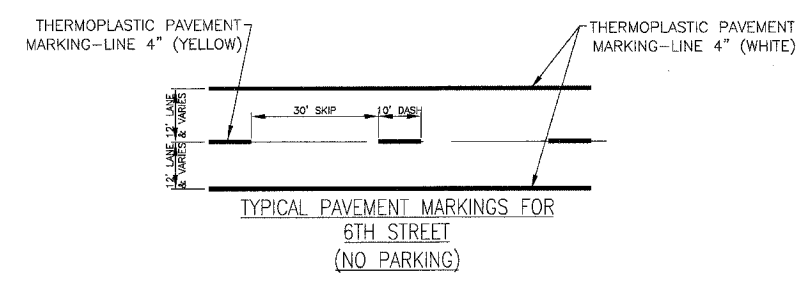
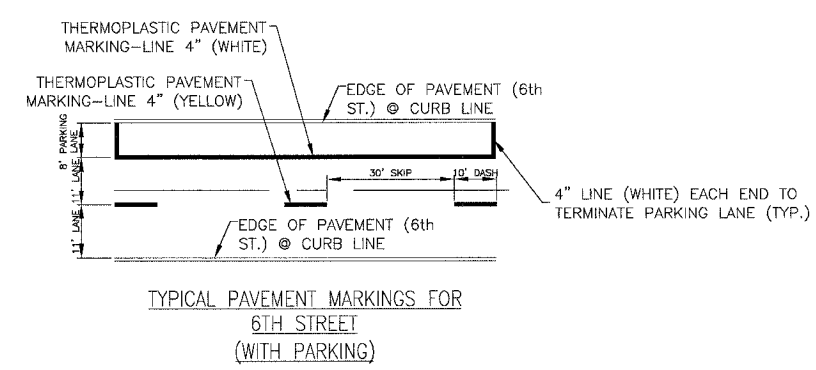
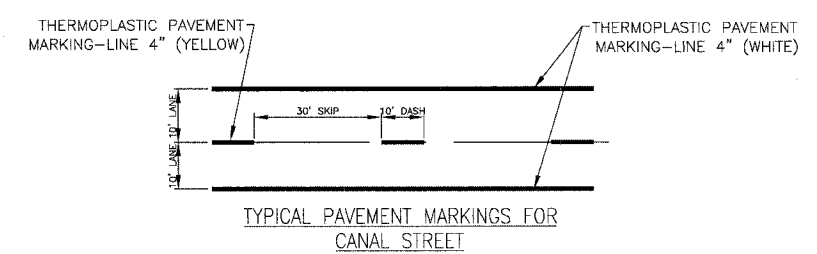
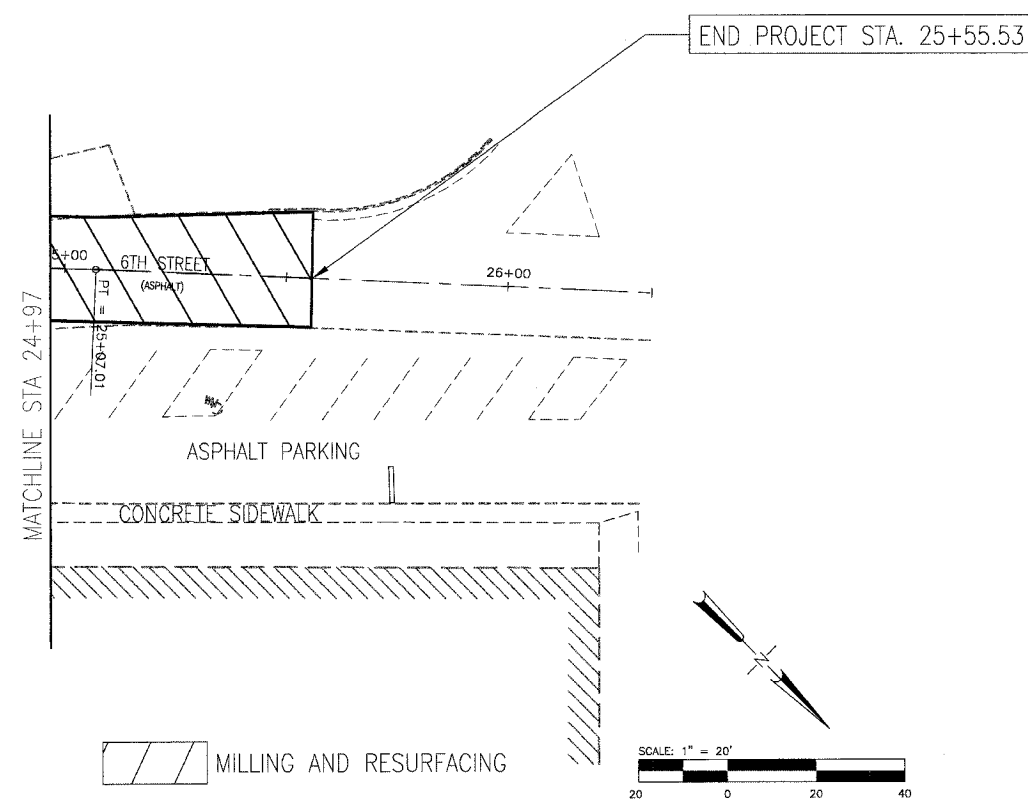


RESURFACING
 MILLING AND RESURFACING

REVISIONS	
NAME	DATE

ILLINOIS DEPARTMENT OF TRANSPORTATION
PLAN SHEETS
SHEET 4 OF 5
 F.A.U. 9141 (CANAL STREET)
 F.A.U. 9142 (6TH STREET)
 SECTION 05-00022-00-RS
 ST. CLAIR & MADISON COUNTY
 SCALE: 1" = 20'
 DATE: DECEMBER 5, 2005
 DRAWN BY: JEH
 CHECKED BY: RCY

F.A. DIST.	SECTION	COUNTY	TOTAL SHEETS	SHEET NO.
9141/9142	05-00022-00-RS	ST. CLAIR	9	9
STA. 24+87.00	TO STA. 25+55.53			
FED. ROAD DIST. NO.	SURFS	FED. AID PROJECT		
CONTRACT NO. 97266				



PAVEMENT MARKING DETAIL

REVISIONS	
NAME	DATE

ILLINOIS DEPARTMENT OF TRANSPORTATION
PLAN SHEETS
SHEET 5 OF 5
 F.A.U. 9141 (CANAL STREET)
 F.A.U. 9142 (6TH STREET)
 SECTION 05-00022-00-RS
 ST. CLAIR & MADISON COUNTY

SCALE: 1" = 20'
 DATE: DECEMBER 5, 2005

DRAWN BY: JEH
 CHECKED BY: RCY