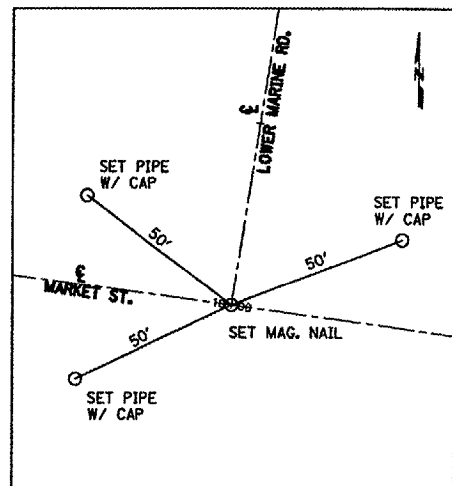
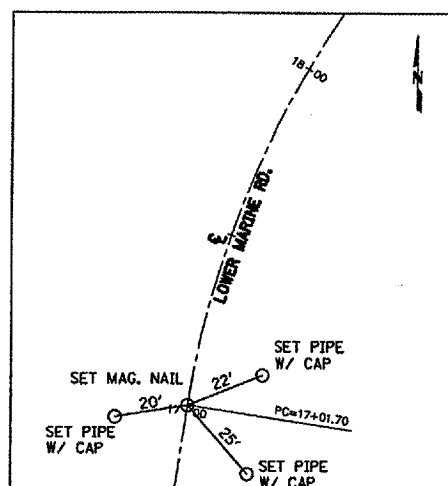


MAP ROUTE	SECTION	COUNTY	TOTAL SHEETS	SHEET NO.
9397	01-00022-00-RP	MADISON	72	13
STA.		TO STA.		

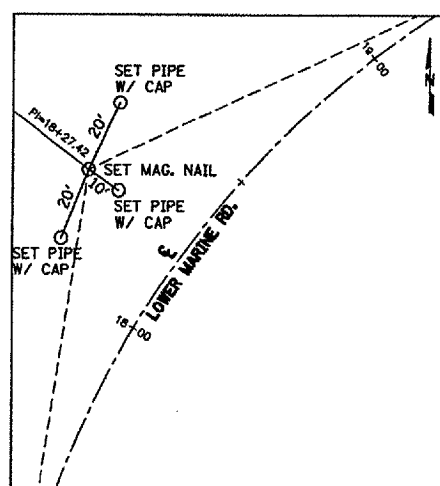
CONTRACT NO. 97269



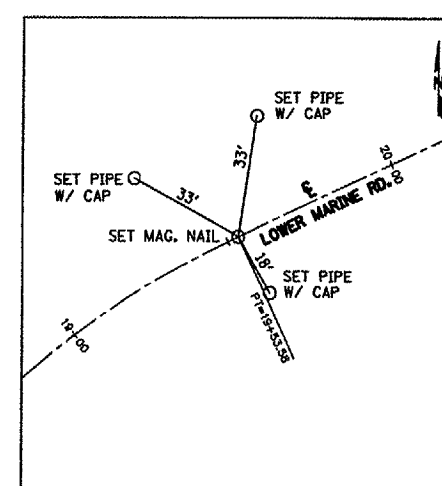
CENTER LINE LOWER MARINE ROAD  
CL/CL STA 10+00.00  
N 750,850.29 E 2,379,240.07



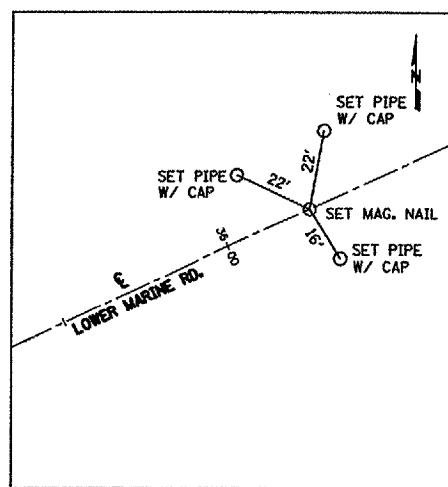
CENTER LINE LOWER MARINE ROAD  
PC STA 17+01.70  
N 751,544.17 E 2,379,344.52



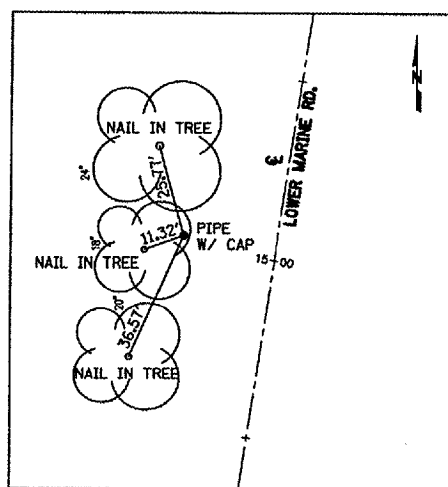
CENTER LINE LOWER MARINE ROAD  
PI STA 18+27.42 34.47' LT  
N 751,679.65 E 2,379,364.92



CENTER LINE LOWER MARINE ROAD  
PT STA 19+53.58  
N 751,737.44 E 2,379,489.14



CENTER LINE LOWER MARINE ROAD  
END STA 36+25.00  
N 752,442.48 E 2,381,005.06



BENCHMARK  
STA 15+02.93 25.50' LT  
N 751,351.42 E 2,379,289.72  
ELEV. 547.49

REVISIONS	
NAME	DATE

ALIGNMENT TIES, &  
BENCHMARKS

LOWER MARINE ROAD IMPROVEMENTS  
CITY OF TROY  
MADISON COUNTY, ILLINOIS