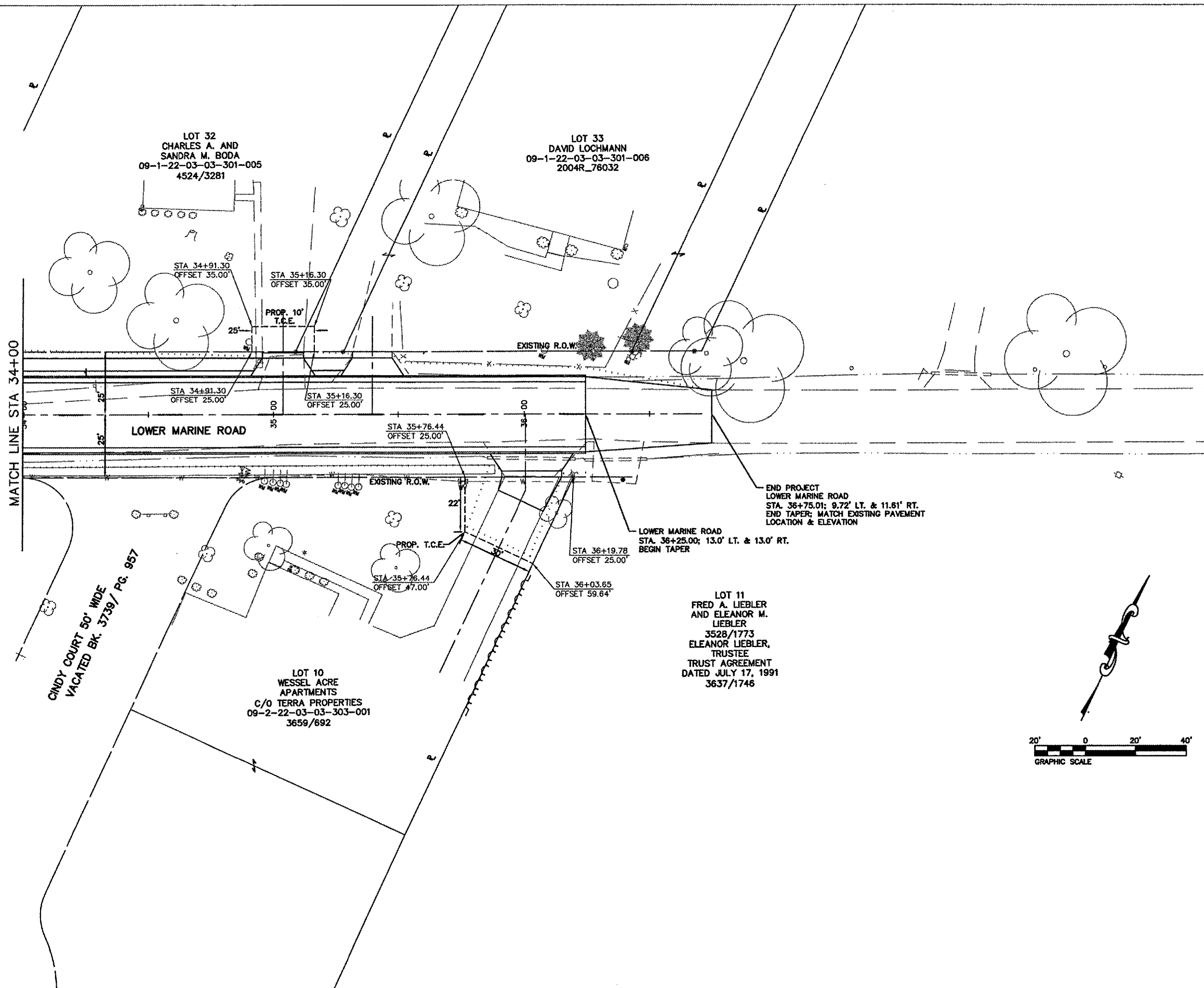


FILE NO.	SECTION	COUNTY	TOTAL SHEETS	SHEET NO.
9.397	01-00022-00-RP	MADISON	72	42
STA. 34+00		TO STA. 36+75		
RIGHT-OF-WAY PLAN				

CONTRACT NO. 97269



MATCH LINE STA 34+00

CINDY COURT 50' WIDE
VACATED BK. 3739 / PG. 957

LOT 32
CHARLES A. AND
SANDRA M. BODA
09-1-22-03-03-301-005
4524/3281

LOT 33
DAVID LOCHMANN
09-1-22-03-03-301-006
2004R_76032

LOT 10
WESSEL ACRE
APARTMENTS
C/O TERRA PROPERTIES
09-2-22-03-03-303-001
3659/692

LOT 11
FRED A. LIEBLER
AND ELEANOR M.
LIEBLER
3528/1773
ELEANOR LIEBLER,
TRUSTEE
TRUST AGREEMENT
DATED JULY 17, 1991
3637/1746

STA 34+91.30
OFFSET 35.00'

STA 35+16.30
OFFSET 35.00'

PROP. 10'
T.C.E.

STA 34+91.30
OFFSET 25.00'

STA 35+16.30
OFFSET 25.00'

LOWER MARINE ROAD

STA 35+76.44
OFFSET 25.00'

EXISTING R.O.W.

PROP. T.C.E.

STA 35+76.44
OFFSET 47.00'

STA 36+03.65
OFFSET 59.64'

STA 36+19.78
OFFSET 25.00'

LOWER MARINE ROAD
STA. 36+25.00; 13.0' LT. & 13.0' RT.
BEGIN TAPER

END PROJECT
LOWER MARINE ROAD
STA. 36+75.01; 9.72' LT. & 11.61' RT.
END TAPER; MATCH EXISTING PAVEMENT
LOCATION & ELEVATION

