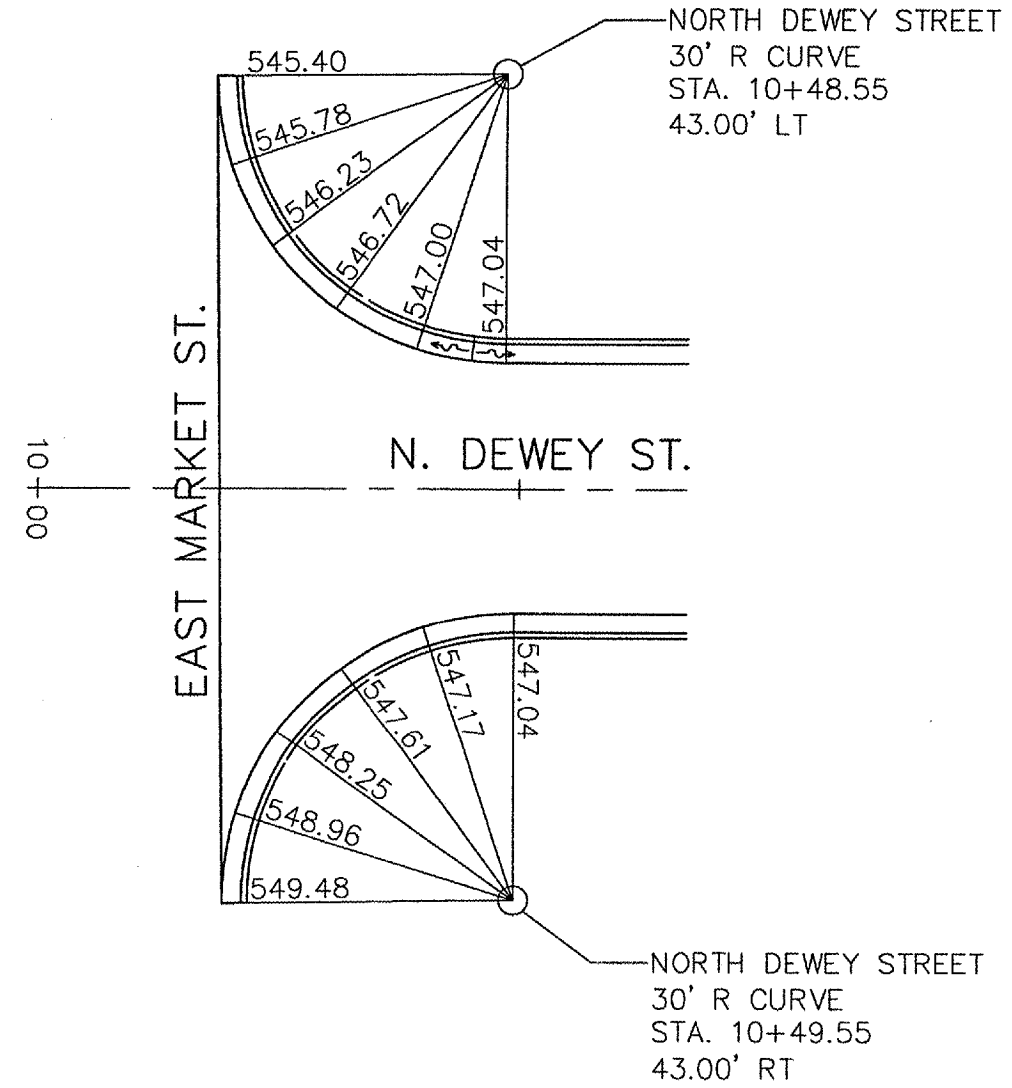


FILE NO.	SECTION	COUNTY	TOTAL SHEETS	SHEET NO.
9397	01-00022-00-RP	MADISON	72	43

CONTRACT NO. 97269



NOTE: ALL ELEVATIONS ARE GIVEN AT THE EDGE OF PAVEMENT.

REVISIONS	
NAME	DATE

INTERSECTION DETAIL

LOWER MARINE ROAD IMPROVEMENTS
CITY OF TROY
MADISON COUNTY, ILLINOIS