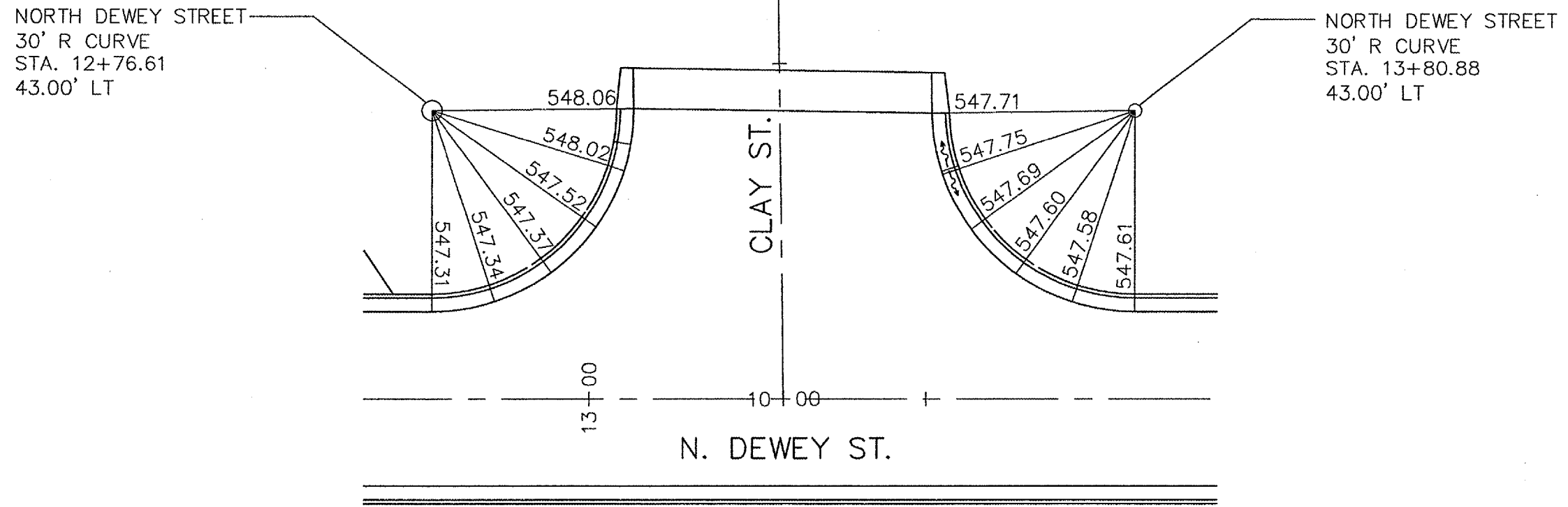


PRI NO	SECTION	COUNTY	TOTAL SHEETS	SHEET NO
9397	01-00022-00-RP	MADISON	72	44

CONTRACT NO. 97269



NOTE: ALL ELEVATIONS ARE GIVEN AT THE EDGE OF PAVEMENT.

REVISIONS	
NAME	DATE

INTERSECTION DETAIL
 LOWER MARINE ROAD IMPROVEMENTS
 CITY OF TROY
 MADISON COUNTY, ILLINOIS