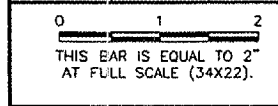


K:\SpringfieldAp\0503507\DrawSheets
 FILE: 08_EX\PMTO1.dwg
 UPDATE BY: Dave Allen
 PLOT DATE: 2/6/2006 4:28 PM
 BASE_EXISTTOPO
 tbinfo
 BASE_PROPGEO
 KEY

REVISIONS		
NUMBER	BY	DATE

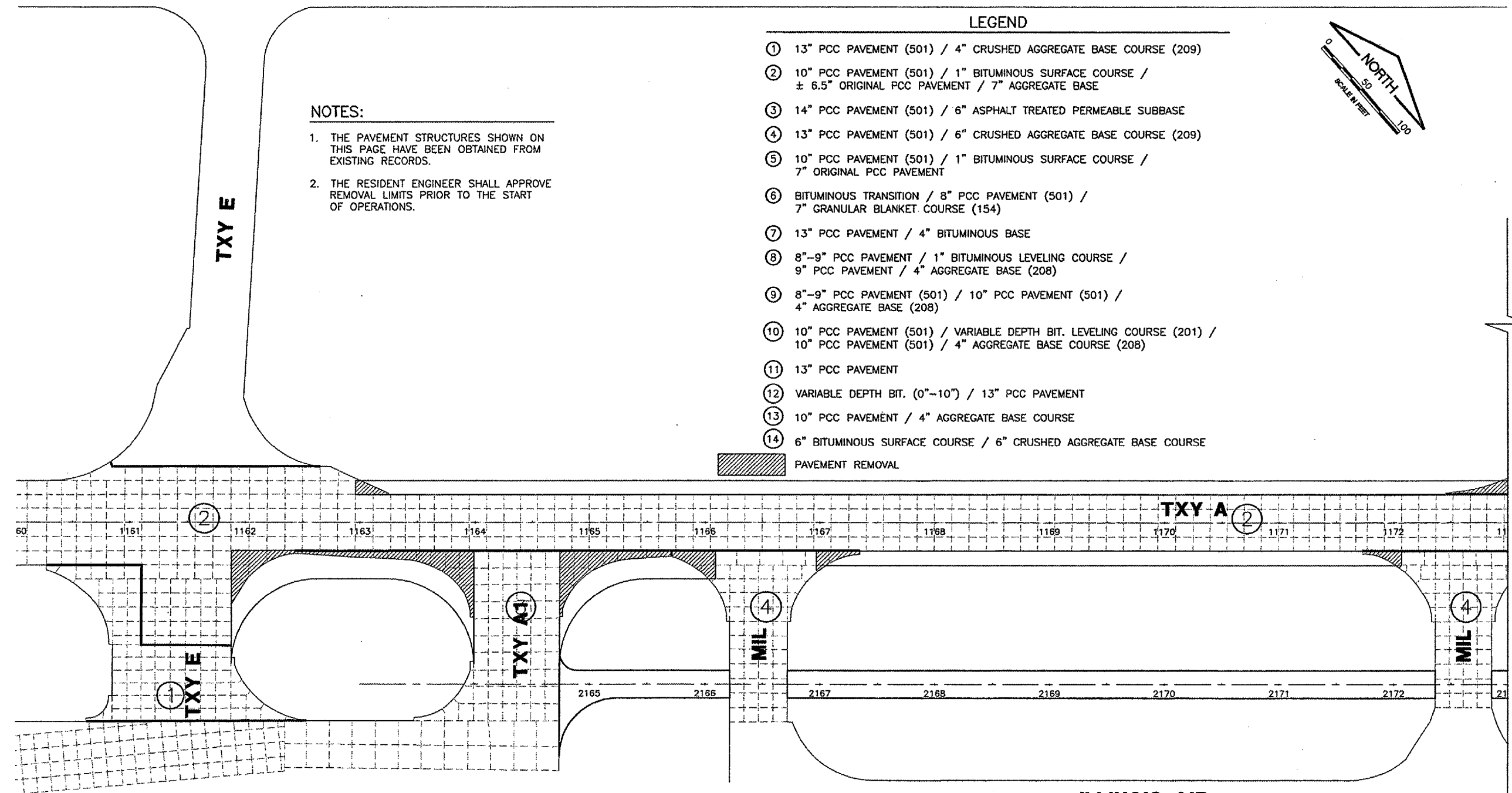


LEGEND

- ① 13" PCC PAVEMENT (501) / 4" CRUSHED AGGREGATE BASE COURSE (209)
 - ② 10" PCC PAVEMENT (501) / 1" BITUMINOUS SURFACE COURSE / ± 6.5" ORIGINAL PCC PAVEMENT / 7" AGGREGATE BASE
 - ③ 14" PCC PAVEMENT (501) / 6" ASPHALT TREATED PERMEABLE SUBBASE
 - ④ 13" PCC PAVEMENT (501) / 6" CRUSHED AGGREGATE BASE COURSE (209)
 - ⑤ 10" PCC PAVEMENT (501) / 1" BITUMINOUS SURFACE COURSE / 7" ORIGINAL PCC PAVEMENT
 - ⑥ BITUMINOUS TRANSITION / 8" PCC PAVEMENT (501) / 7" GRANULAR BLANKET COURSE (154)
 - ⑦ 13" PCC PAVEMENT / 4" BITUMINOUS BASE
 - ⑧ 8"-9" PCC PAVEMENT / 1" BITUMINOUS LEVELING COURSE / 9" PCC PAVEMENT / 4" AGGREGATE BASE (208)
 - ⑨ 8"-9" PCC PAVEMENT (501) / 10" PCC PAVEMENT (501) / 4" AGGREGATE BASE (208)
 - ⑩ 10" PCC PAVEMENT (501) / VARIABLE DEPTH BIT. LEVELING COURSE (201) / 10" PCC PAVEMENT (501) / 4" AGGREGATE BASE COURSE (208)
 - ⑪ 13" PCC PAVEMENT
 - ⑫ VARIABLE DEPTH BIT. (0"-10") / 13" PCC PAVEMENT
 - ⑬ 10" PCC PAVEMENT / 4" AGGREGATE BASE COURSE
 - ⑭ 6" BITUMINOUS SURFACE COURSE / 6" CRUSHED AGGREGATE BASE COURSE
- PAVEMENT REMOVAL

NOTES:

- 1. THE PAVEMENT STRUCTURES SHOWN ON THIS PAGE HAVE BEEN OBTAINED FROM EXISTING RECORDS.
- 2. THE RESIDENT ENGINEER SHALL APPROVE REMOVAL LIMITS PRIOR TO THE START OF OPERATIONS.



**ILLINOIS AIR
 NATIONAL
 GUARD**

SPRINGFIELD AIRPORT AUTHORITY
ABRAHAM LINCOLN CAPITAL AIRPORT
SPRINGFIELD, ILLINOIS

WIDEN TAXIWAY A - CONSTRUCT PERIMETER ROAD
EXISTING PAVEMENT STRUCTURE 1

© Copyright CMT, Inc.
CMT
 CRAWFORD, MURPHY & TILLY, INC.
 CONSULTING ENGINEERS
 License No. 184-000618

DESIGN BY: MB
 DRAWN BY: DPA
 CHECKED BY: *RLV*
 APPROVED BY: *RLV*
 DATE: 1/23/06
 JOB No: 0503507

I.L. PROJ. NO. SPI-3555
 AIP PROJ. NO. 3-17-0096-44