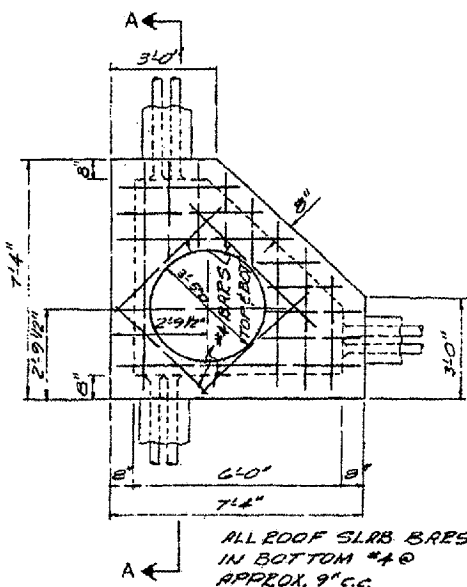


THE LOCATION OF UNDERGROUND UTILITIES AS INDICATED ON THE PLANS HAS BEEN OBTAINED FROM EXISTING RECORDS. NEITHER THE OWNER, THE DIVISION, NOR THE PROJECT ENGINEER ASSUMES ANY RESPONSIBILITY WHATEVER IN RESPECT TO THE ACCURACY, COMPLETENESS, OR SUFFICIENCY OF THE INFORMATION. THERE IS NO GUARANTEE, EITHER EXPRESSED OR IMPLIED, THAT THE LOCATIONS, SIZE, AND TYPE OF MATERIAL OF EXISTING UNDERGROUND UTILITIES INDICATED ARE REPRESENTATIVE OF THOSE TO BE ENCOUNTERED IN THE CONSTRUCTION.

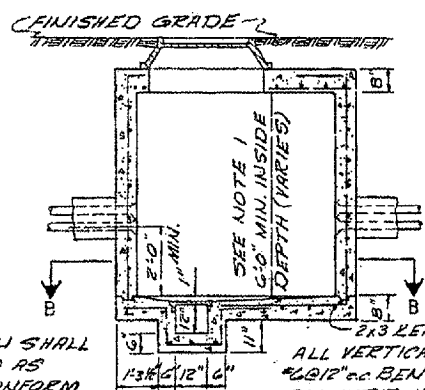
IT SHALL BE THE CONTRACTORS RESPONSIBILITY TO DETERMINE THE ACTUAL LOCATION OF ALL SUCH FACILITIES, INCLUDING SERVICE CONNECTIONS TO UNDERGROUND UTILITIES. PRIOR TO CONSTRUCTION, THE CONTRACTOR SHALL NOTIFY THE UTILITY COMPANY OF HIS OPERATIONAL PLANS. THE CONTRACTOR SHALL MAKE ARRANGEMENTS FOR DETAILED INFORMATION AND ASSISTANCE IN LOCATING UTILITIES. IN THE EVENT AN UNEXPECTED UTILITY INTERFERENCE IS ENCOUNTERED DURING CONSTRUCTION, THE CONTRACTOR SHALL IMMEDIATELY NOTIFY THE UTILITY COMPANY, THE OWNER, AND THE RESIDENT ENGINEER. ANY SUCH MAINS AND/OR SERVICES DISTURBED BY THE CONTRACTOR'S OPERATIONS SHALL BE RESTORED IMMEDIATELY AT HIS EXPENSE TO THE SATISFACTION OF THE OWNER AND THE ENGINEER.

**EXISTING CONDITION & REMOVAL NOTES**

1. EXISTING EDGE LIGHT CABLING IS SHOWN DISTORTED TO IMPROVE CLARITY.
2. REMOVAL OF SPLICE CANS WHICH ARE PART OF SIGN BASES SHALL BE INCIDENTAL TO SIGN BASE REMOVAL.



PLAN



SECTION A-A

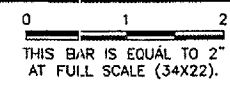
NOTE 1:  
 THIS DIMENSION SHALL BE INCREASED AS REQUIRED TO CONFORM TO THE MAX. COVER AND THE QUALITY OF DUCTS IN THE BANKS ENTERING THE MANHOLE.

**ELECTRICAL MANHOLE TYPE "F"**  
**EXISTING ELECTRICAL MANHOLE REMOVAL**  
 N.T.S.

**LEGEND**

—————	EXISTING PAVEMENT
—————	NEW PAVEMENT
— E ———	EXIST. ELECTRICAL CABLE
— FO ———	EXIST. FIBER—OPTIC CABLE
— SS ———	EXIST. STORM SEWER
— UD ———	EXIST. UNDERDRAIN
— X ———	EXIST. FENCE
-----	EXIST. PAVEMENT MARKING
-----	EXIST. JOINT
R	NEW REMOVAL
RR	NEW RELOCATION
A	NEW ADJUSTMENT
⊠	EXIST. BASE MOUNTED TAXIWAY LIGHT
○	EXIST. STAKE MOUNTED TXY LIGHT
⊙	EXIST. FLUSH MOUNTED RUNWAY LIGHT
⊠	EXIST. BASE MOUNTED RUNWAY LIGHT
⊙	EXIST. BASE MOUNTED MALSR THRESHOLD LIGHT
⊠	EXIST. THRESHOLD LIGHT
⊠	EXIST. AIRFIELD SIGN
FOS □	EXIST. FIBER—OPTIC SPLICE, DIRECT BURY
⊙	EXIST. SPLICE CAN
⊙	EXIST. OVERHEAD LIGHT
⊠ <sub>HH</sub>	EXIST. HANDHOLE
□ <sub>DM</sub>	EXIST. DUCT MARKER
⊙ <sub>CS</sub>	EXIST. COLLECTION STRUCTURE
⊙	EXIST. CLEANOUT
□	EXIST. INLET
⊙	EXIST. MANHOLE
⊠	EXIST. WINDSOCK
⊙	EXIST. SOIL BORING
⊠	EXIST. SIGN
▨	EXIST. PAVEMENT — TO BE REMOVED

REVISIONS		
NUMBER	BY	DATE



**SPRINGFIELD AIRPORT AUTHORITY**  
**ABRAHAM LINCOLN CAPITAL AIRPORT**  
**SPRINGFIELD, ILLINOIS**  
**WIDEN TAXIWAY A - CONSTRUCT PERIMETER ROAD**  
**EXISTING CONDITIONS & REMOVALS**  
**LEGEND & NOTES**

© Copyright CMT, Inc.  
**CMT**  
 CRAWFORD, MURPHY & TILLY, INC.  
 CONSULTING ENGINEERS  
 License No. 784-000513

DESIGN BY:	RLV
DRAWN BY:	DPA
CHECKED BY:	RLV
APPROVED BY:	RLV
DATE:	1/23/06
JOB No:	0503507
IL PROJ. NO.	SPI-3555
AIP PROJ. NO.	3-17-0096-44
SHEET	12 OF 83 SHEETS