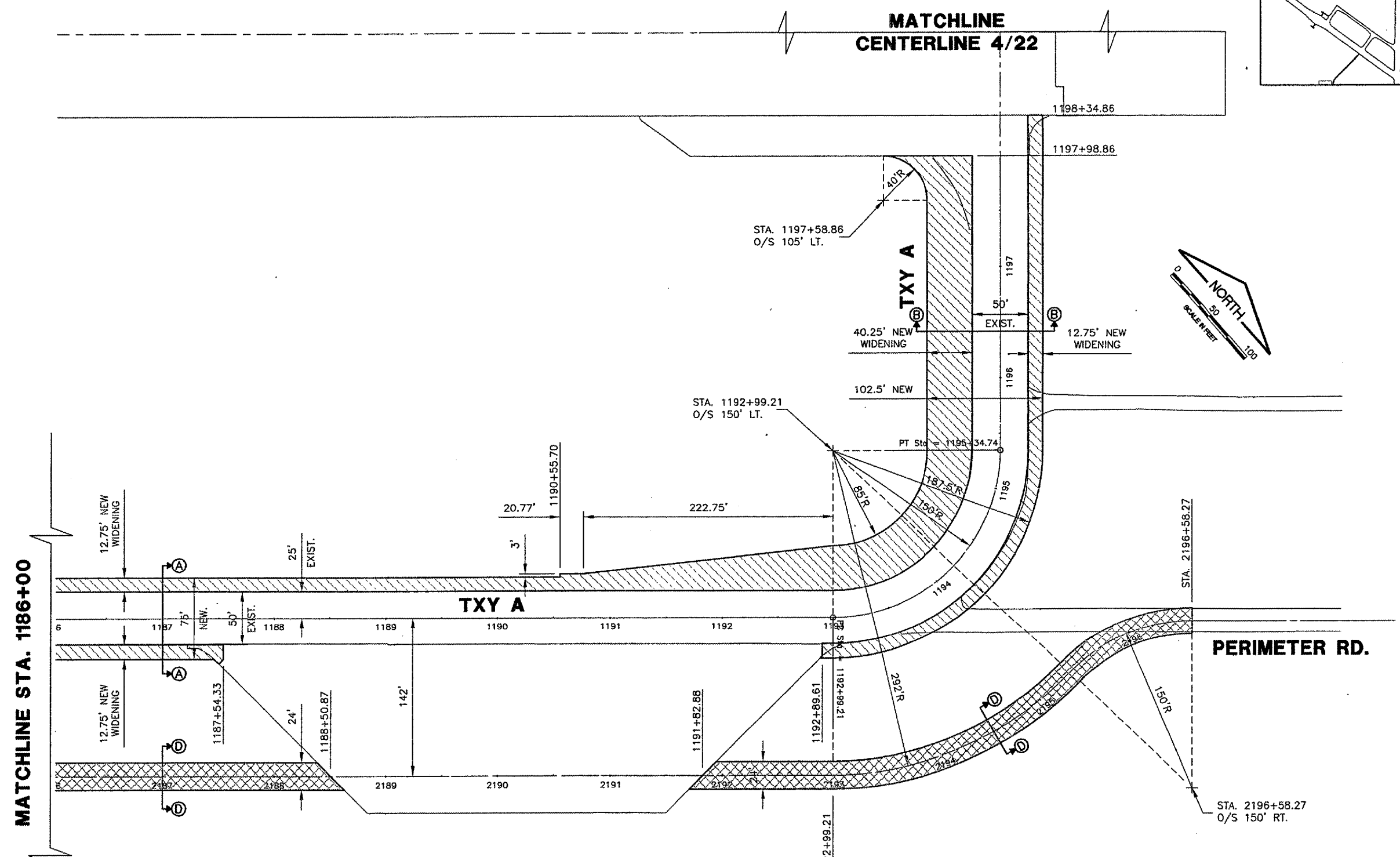
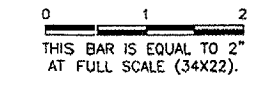
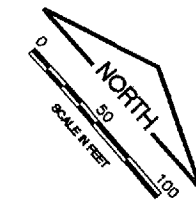


CA002
 K:\SpringfieldAp\0503507\Draw\Sheets
 FILE: 19_PROPIPM03.dwg
 UPDATE BY: Dave Allen
 PLOT DATE: 2/7/2006 9:24 AM
 BASE_PROPOSED
 BASE_EXISTING
 CAPDESIGNBASE
 KEY
 tbinfo

REVISIONS		
NUMBER	BY	DATE



MATCHLINE STA. 1186+00



- LEGEND**
- NEW 13" PCC PAVEMENT (501)
4" CRUSHED AGGREGATE BASE COURSE (209)
 - NEW 1-1/2" BITUMINOUS SURFACE COURSE (401)
2-1/2" BITUMINOUS BASE COURSE (201)
6" CRUSHED AGGREGATE BASE COURSE (209)
 - NEW 1-1/2" BITUMINOUS TRANSITION (401)

SPRINGFIELD AIRPORT AUTHORITY
ABRAHAM LINCOLN CAPITAL AIRPORT
SPRINGFIELD, ILLINOIS

WIDEN TAXIWAY A - CONSTRUCT PERIMETER ROAD
PROPOSED IMPROVEMENTS 3

© Copyright CMT, Inc.
CMT
 CRAWFORD, MARTIN & TULLY, INC.
 CONSULTING ENGINEERS
 License No. 184-000613

DESIGN BY:	RLV
DRAWN BY:	DPA
CHECKED BY:	<i>RLV</i>
APPROVED BY:	<i>RLV</i>
DATE:	1/23/06
JOB No:	0503507
IL PROJ. NO.	SPI-3555
AIP PROJ. NO.	3-17-0096-44
SHEET	19 OF 83 SHEETS