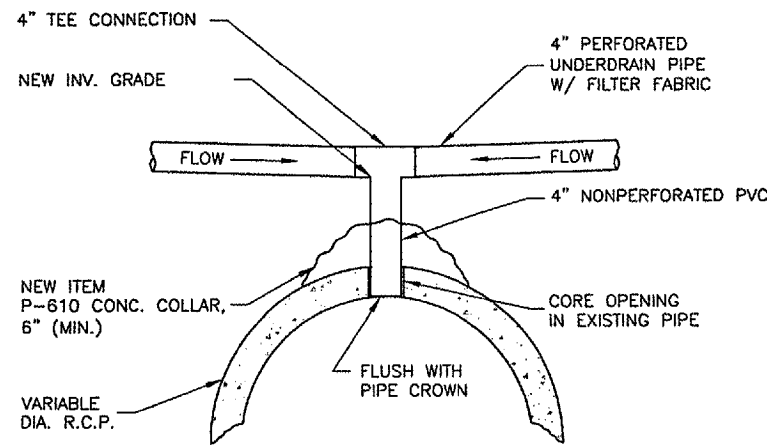
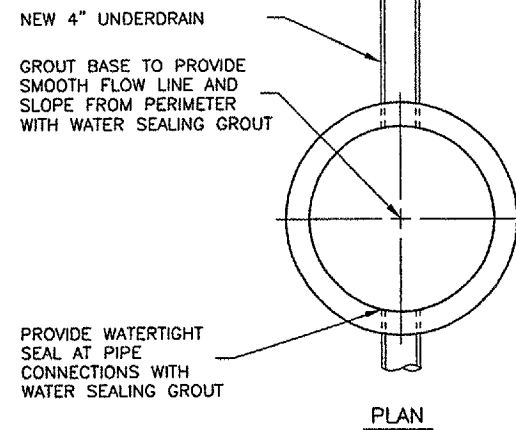
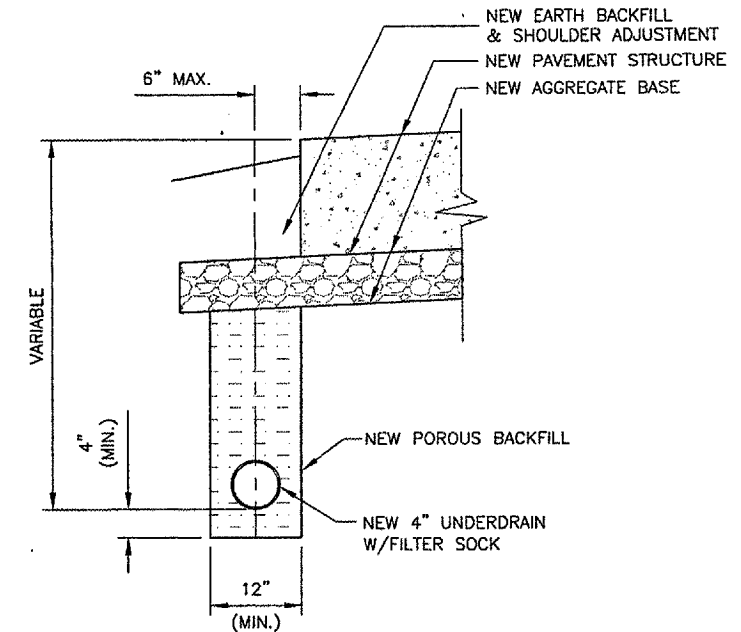


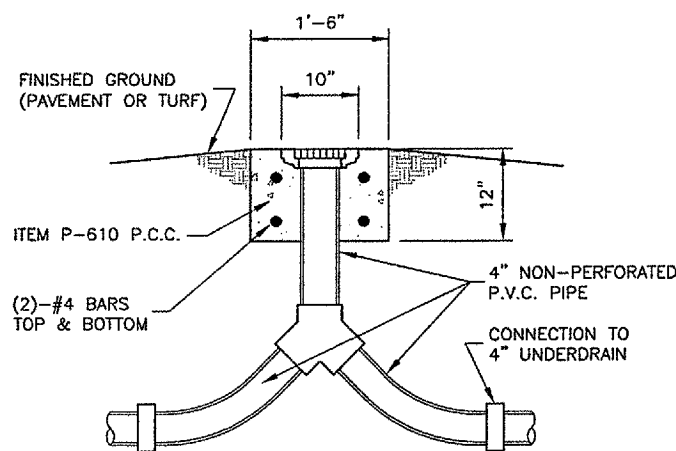
**UNDERDRAIN CLEAN-OUT DETAIL - TYPE 1**  
 N.T.S.



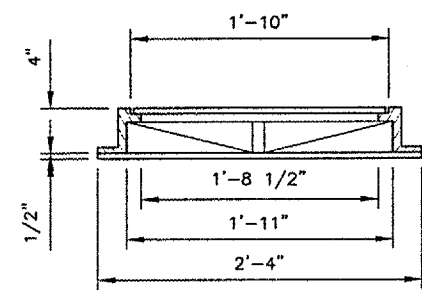
**UNDERDRAIN DIRECT TOP CONNECTION DETAIL**  
 N.T.S.



**TYPICAL UNDERDRAIN DETAIL  
 PAVEMENT EDGE**  
 N.T.S.

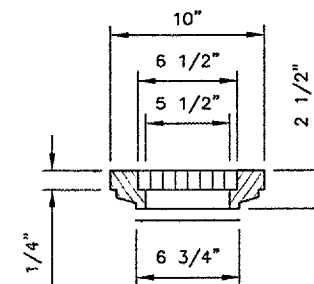


**UNDERDRAIN CLEAN-OUT DETAIL - TYPE 2**  
 N.T.S.



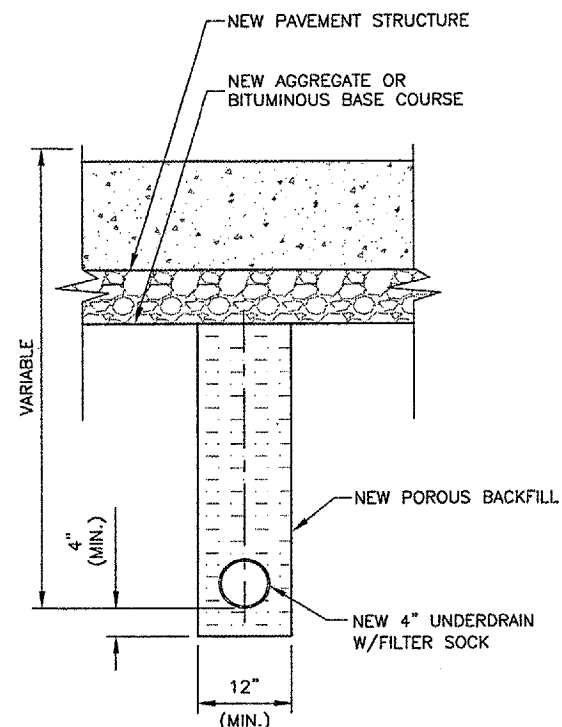
**CAST IRON FRAME & LID (SIMILAR TO NEENAH R-1690-A HEAVY DUTY OR APPROVED EQUAL)**

**FRAME AND LID**

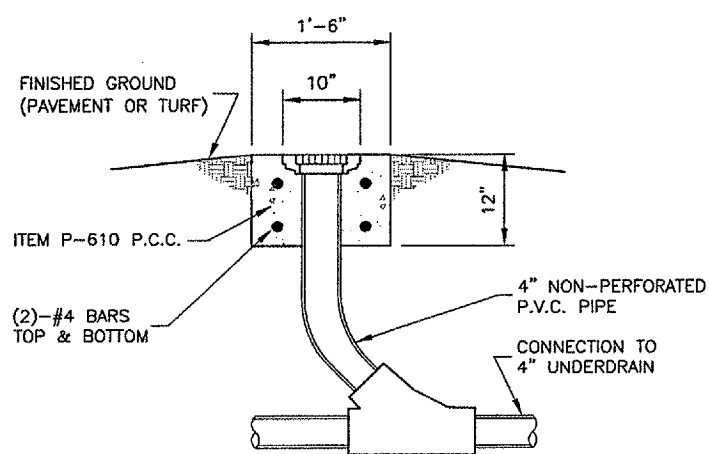


**CAST IRON FRAME & COVER (SIMILAR TO NEENAH R-6013 OR APPROVED EQUAL)**

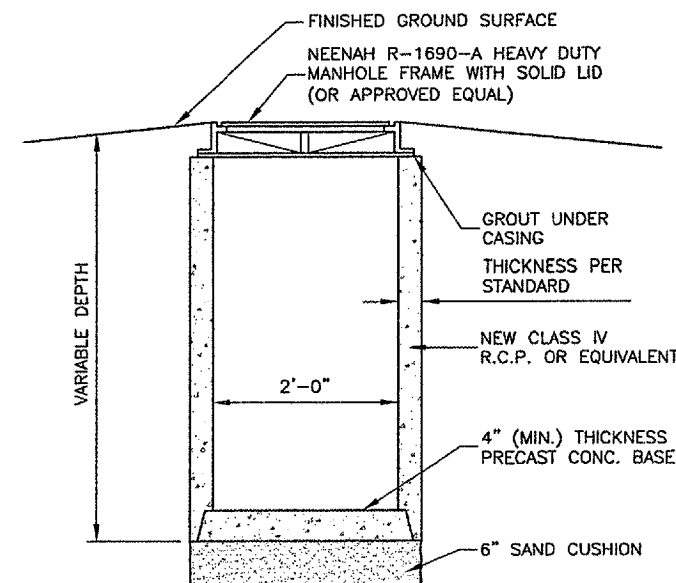
**FRAME AND COVER**



**TYPICAL UNDERDRAIN DETAIL  
 BELOW PAVEMENT**  
 N.T.S.

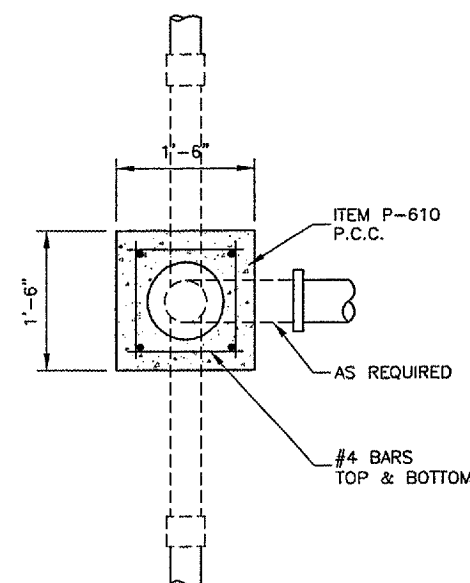


**UNDERDRAIN CLEAN-OUT DETAIL - TYPE 3**  
 N.T.S.



**SIDE VIEW**

**UNDERDRAIN COLLECTION STRUCTURE DETAIL**  
 N.T.S.



**PLAN**

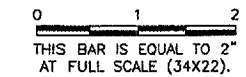
**UNDERDRAIN CLEAN-OUT DETAILS**  
 N.T.S.

**NOTES**

DURING UNDERDRAIN CONSTRUCTION, CARE SHALL BE TAKEN TO ENSURE GOOD DRAINAGE BETWEEN THE SUB-BASE AND THE POROUS BACKFILL MATERIAL WHICH WILL AFFECT DRAINAGE TO THE UNDERDRAIN SHALL BE REMOVED PRIOR TO THE PLACEMENT OF PROPOSED POROUS BACKFILL. ALL COST FOR THIS WORK SHALL BE CONSIDERED INCIDENTAL.

**REVISIONS**

NUMBER	BY	DATE



**SPRINGFIELD AIRPORT AUTHORITY**  
**ABRAHAM LINCOLN CAPITAL AIRPORT**  
**SPRINGFIELD, ILLINOIS**

**WIDEN TAXIWAY A - CONSTRUCT PERIMETER ROAD**  
**UNDERDRAIN DETAILS**

© Copyright GMT, Inc.  
**GMT**  
 CRAWFORD, MERRY & TLLY, INC.  
 CONSULTING ENGINEERS  
 License No. 184-000618



DESIGN BY: RLV  
 DRAWN BY: DPA  
 CHECKED BY: *RLV*  
 APPROVED BY: *RLV*  
 DATE: 1/23/06  
 JOB No: 0503507

IL. PROJ. NO. SPI-3555  
 AIP PROJ. NO. 3-17-0096-44