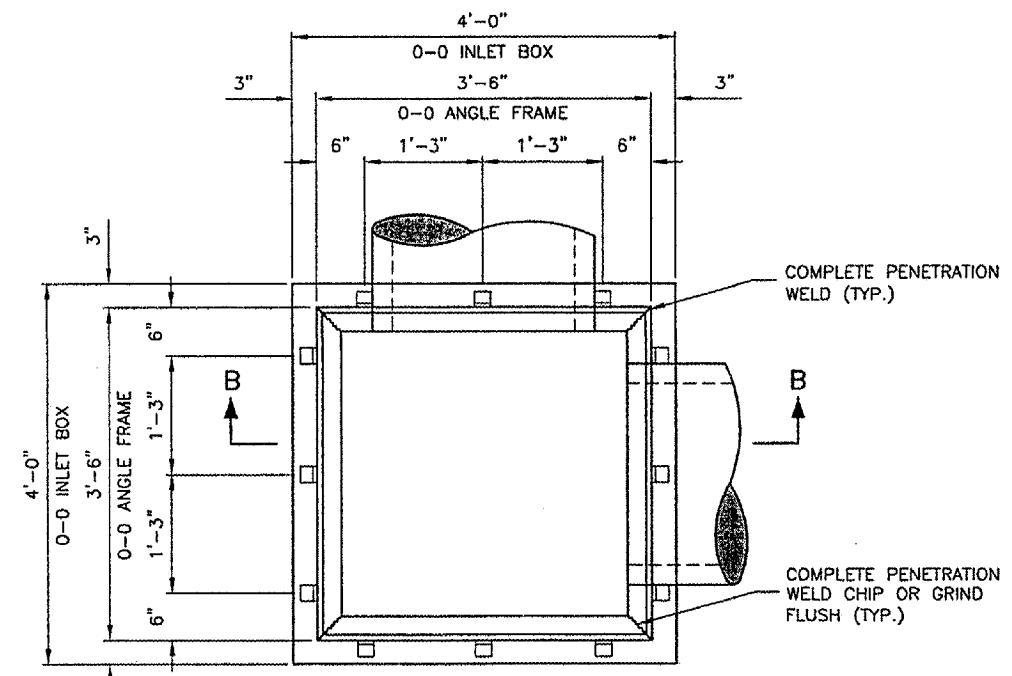
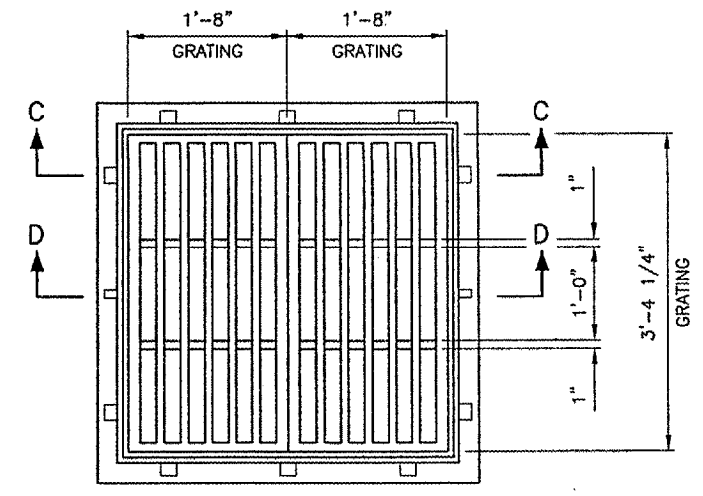


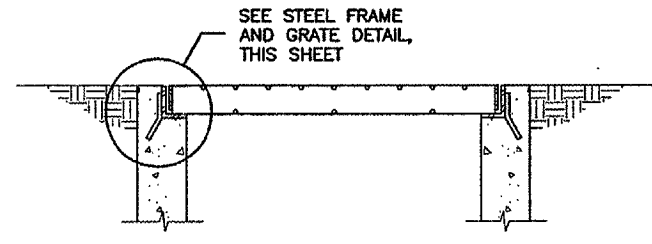
PLAN
N.T.S.



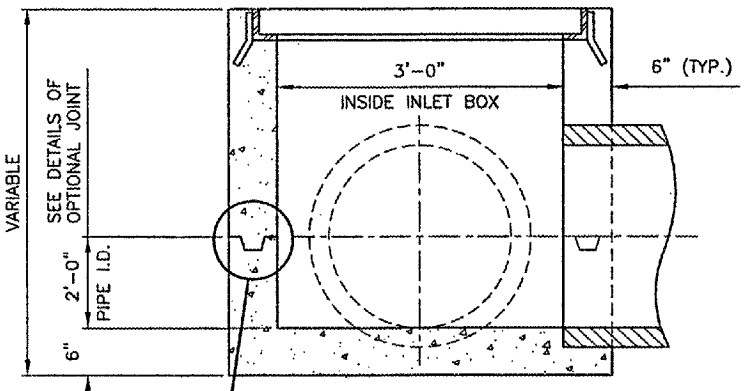
PLAN
N.T.S.



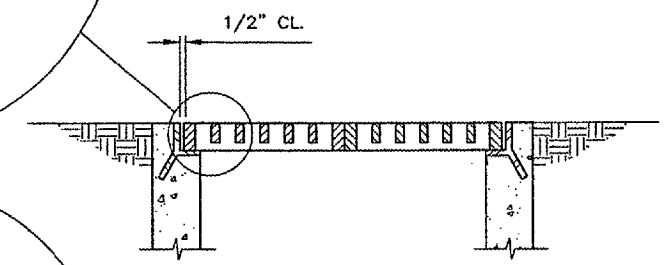
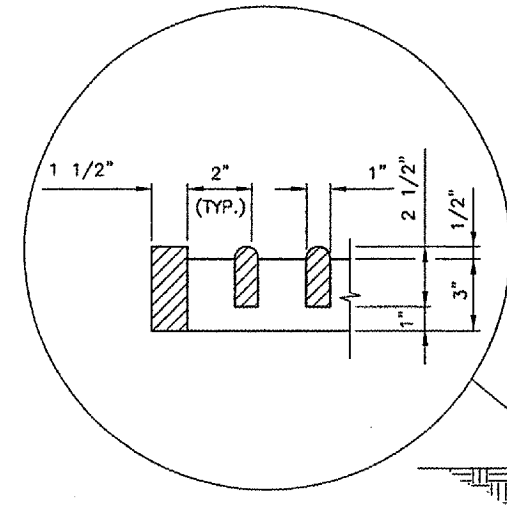
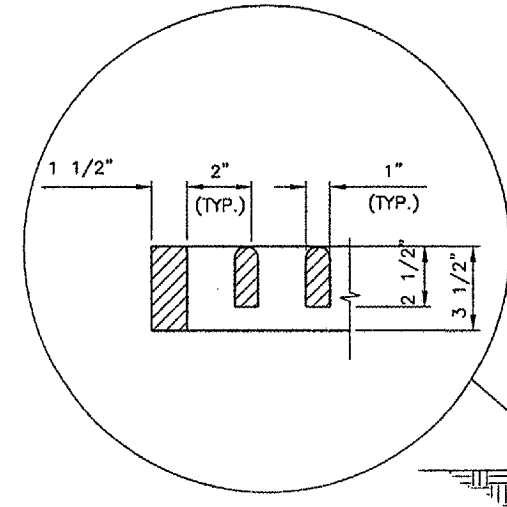
PLAN
N.T.S.



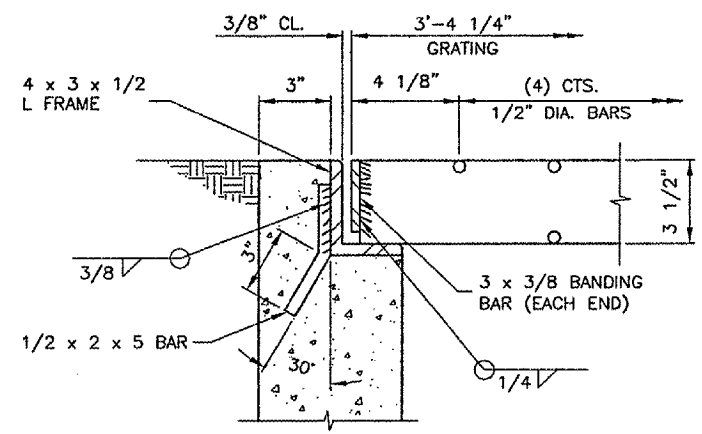
SECTION A-A
N.T.S.



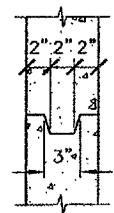
SECTION B-B
N.T.S.



SECTION C-C
N.T.S.

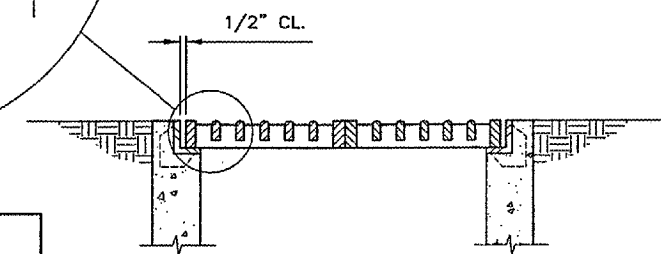


STEEL FRAME AND GRATE DETAIL
N.T.S.



OPTIONAL JOINT DETAIL
N.T.S.

NOTE:
 INLET IS AN IDOT STD. 542546, FLUSH
 INLET BOX FOR MEDIAN. FRAME &
 GRATES ARE NEENAH R-3807 OR
 APPROVED EQUAL.



SECTION D-D
CAST FRAME AND GRATE DETAIL
N.T.S.

REVISIONS		
NUMBER	BY	DATE

0 1 2
 THIS BAR IS EQUAL TO 2"
 AT FULL SCALE (34X22).

SPRINGFIELD AIRPORT AUTHORITY
ABRAHAM LINCOLN CAPITAL AIRPORT
SPRINGFIELD, ILLINOIS

WIDEN TAXIWAY A - CONSTRUCT PERIMETER ROAD
INLET DETAILS

© Copyright CMT, Inc.
CMT
 CRAWFORD, MURPHY & TILLY, INC.
 CONSULTING ENGINEERS
 License No. 184-000618

DESIGN BY: RLV
 DRAWN BY: DPA
 CHECKED BY: *RLV*
 APPROVED BY: *RLV*
 DATE: 1/23/06
 JOB No: 0503507
 I.L. PROJ. NO. SPI-3555
 AIP PROJ. NO. 3-17-0096-44