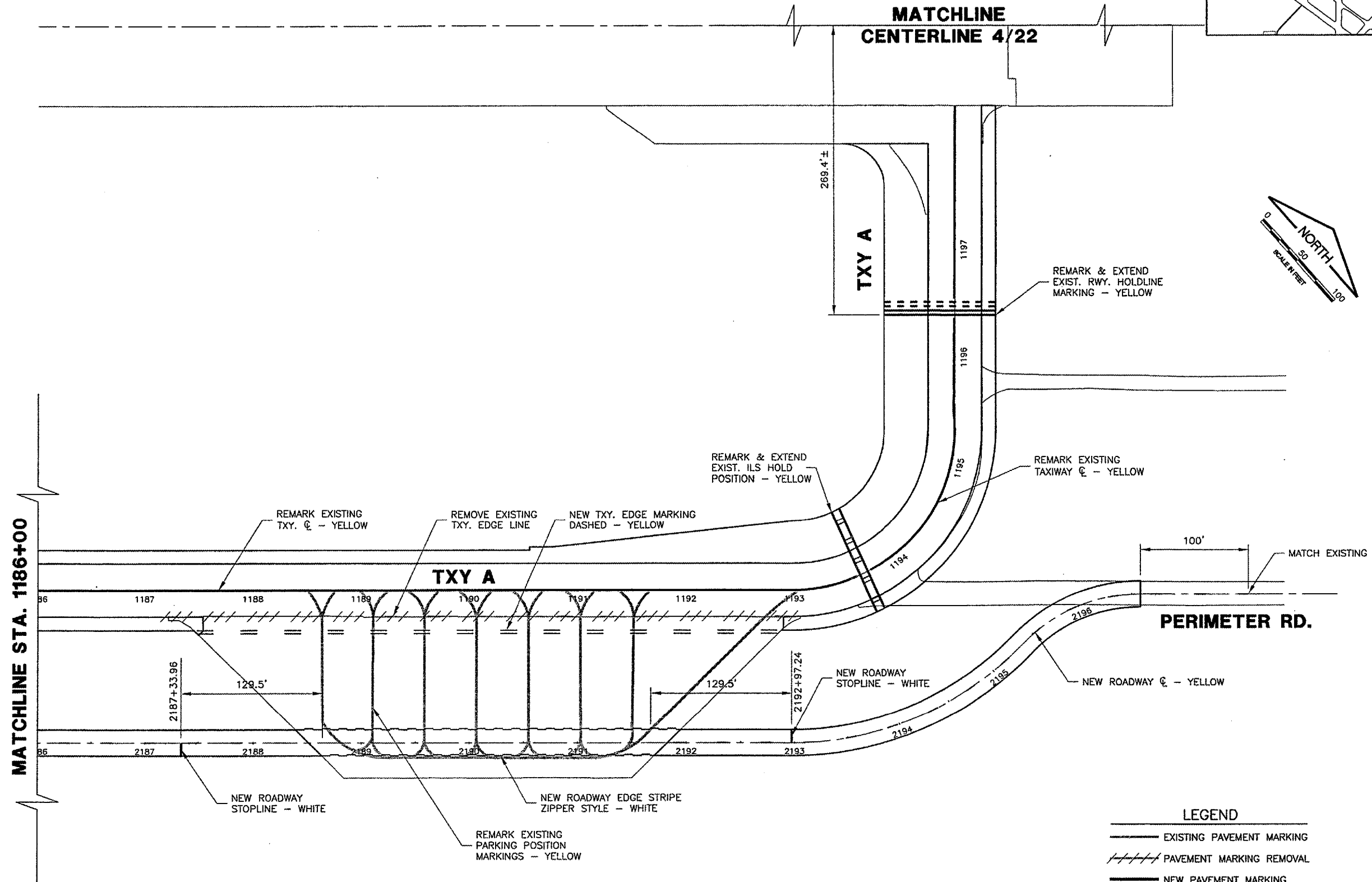
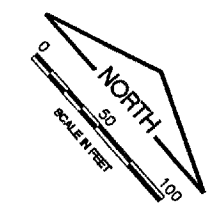
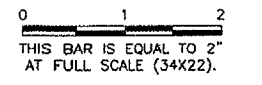



K:\SpringfieldAp\0503507\Draw\Sheets
 FILE: 4B_MARK03.dwg
 UPDATE BY: Dove Allen
 PLOT DATE: 2/6/2006 4:38 PM
 BASE_PROPGEO
 KEY
 BASE_EXISTTOPO
 tbinfo
 BASE_PROPMARK

REVISIONS		
NUMBER	BY	DATE




LEGEND

	EXISTING PAVEMENT MARKING
	PAVEMENT MARKING REMOVAL
	NEW PAVEMENT MARKING


SPRINGFIELD AIRPORT AUTHORITY
ABRAHAM LINCOLN CAPITAL AIRPORT
SPRINGFIELD, ILLINOIS

WIDEN TAXIWAY A - CONSTRUCT PERIMETER ROAD
MARKING PLAN 3

© Copyright CMT, Inc.

CMT
 CRAWFORD MURRAY & TILLY, INC.
 CONSULTING ENGINEERS
 License No. 184-000618

DESIGN BY:	KLB
DRAWN BY:	DPA
CHECKED BY:	<i>RAJ</i>
APPROVED BY:	<i>RAJ</i>
DATE:	1/23/06
JOB No:	0503507
IL. PROJ. NO. SPI-3555	
AIP PROJ. NO. 3-17-0096-44	
SHEET 48 OF 83 SHEETS	