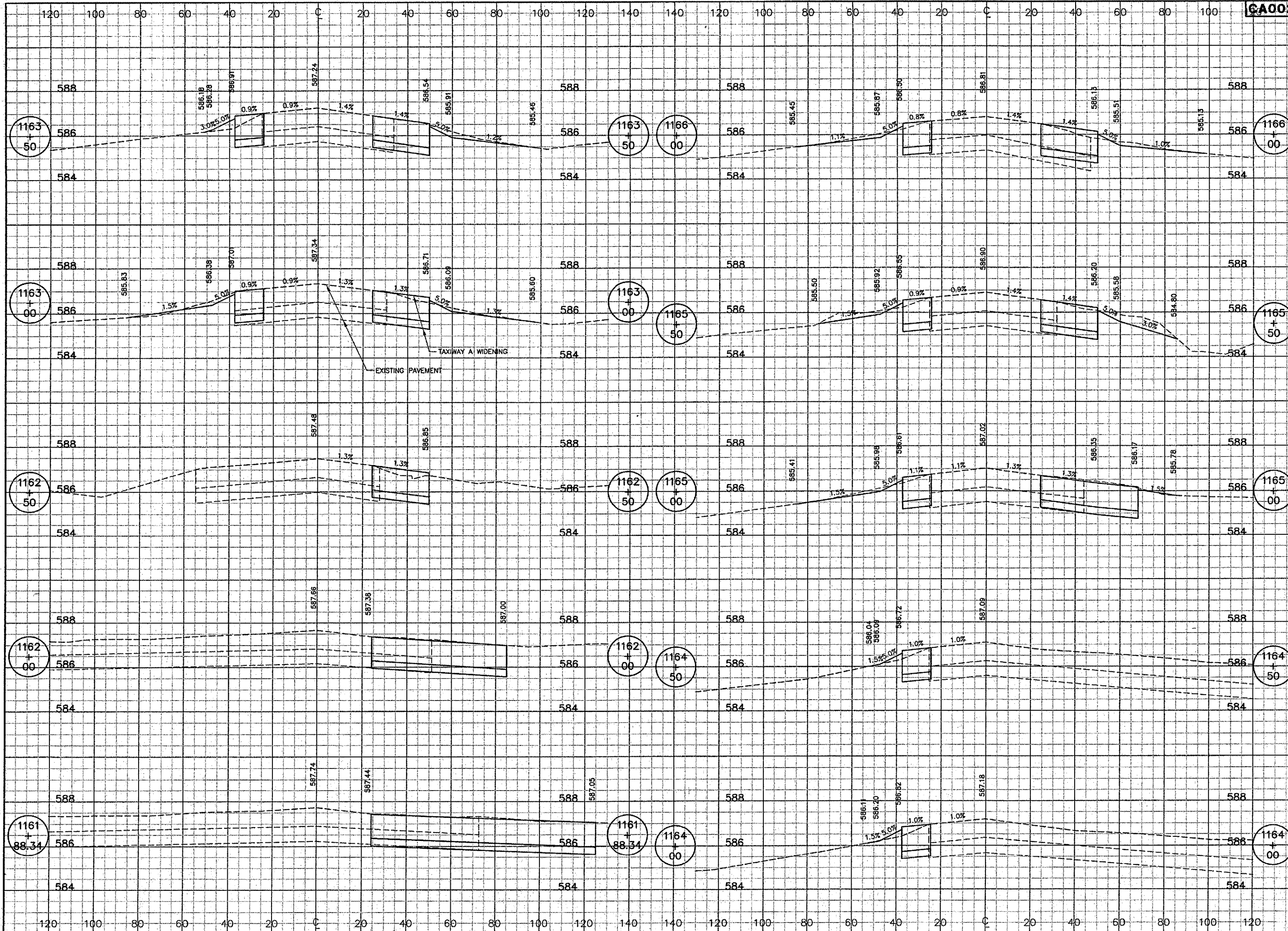
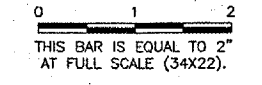


CA002

K:\Springfield\0503507\Draw\Sheets  
FILE: 67\_XSEC01.dwg  
UPDATE BY: Dave Allen  
PLOT DATE: 2/6/2006 5:39 PM  
tbinfo  
rc001001



REVISIONS		
NUMBER	BY	DATE



SPRINGFIELD AIRPORT AUTHORITY  
ABRAHAM LINCOLN CAPITAL AIRPORT  
SPRINGFIELD, ILLINOIS

WIDEN TAXIWAY A - CONSTRUCT PERIMETER ROAD  
TAXIWAY A CROSS SECTIONS 1  
STA. 1161+88.34 TO STA. 1166+00

© Copyright CMT, Inc.  
**CMT**  
CRAWFORD, MURPHY & TILLY, INC.  
CONSULTING ENGINEERS  
License No. 384-000613

DESIGN BY:	CBG
DRAWN BY:	DPA
CHECKED BY:	<i>RLW</i>
APPROVED BY:	<i>RLW</i>
DATE:	1/23/06
JOB No:	0503507
IL PROJ. NO.	SPI-3555
AIP PROJ. NO.	3-17-0096-44
SHEET 67 OF 83 SHEETS	