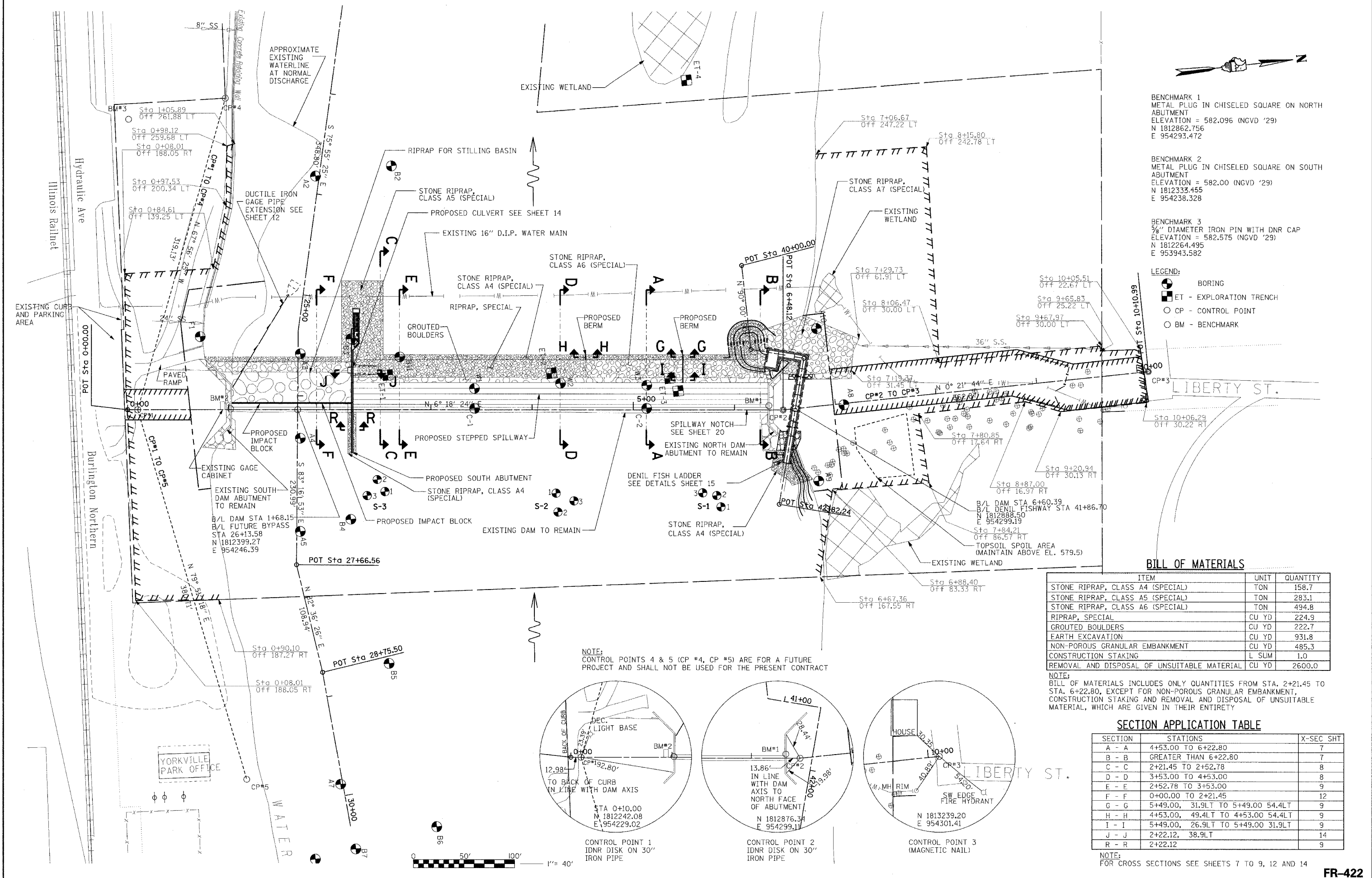


User: unfitted
 10/17/2005 05:46:49 PM
 H:\DWP\Proj\mpl\Projects\Yorkville Sheet Fixes\8 gen000jg.dgn
 Designed by MD
 Checked by RUM
 Drawn by MD
 Checked by RUM



BENCHMARK 1
METAL PLUG IN CHISELED SQUARE ON NORTH ABUTMENT
ELEVATION = 582.096 (NGVD '29)
N 1812862.756
E 954293.472

BENCHMARK 2
METAL PLUG IN CHISELED SQUARE ON SOUTH ABUTMENT
ELEVATION = 582.00 (NGVD '29)
N 1812333.455
E 954238.328

BENCHMARK 3
3/8" DIAMETER IRON PIN WITH DNR CAP
ELEVATION = 582.575 (NGVD '29)
N 1812264.495
E 953943.582

LEGEND:

- ⊙ BORING
- ⊠ ET - EXPLORATION TRENCH
- CP - CONTROL POINT
- ⊙ BM - BENCHMARK

BILL OF MATERIALS

ITEM	UNIT	QUANTITY
STONE RIPRAP, CLASS A4 (SPECIAL)	TON	158.7
STONE RIPRAP, CLASS A5 (SPECIAL)	TON	283.1
STONE RIPRAP, CLASS A6 (SPECIAL)	TON	494.8
RIPRAP, SPECIAL	CU YD	224.9
GROUTED BOULDERS	CU YD	222.7
EARTH EXCAVATION	CU YD	931.8
NON-POROUS GRANULAR EMBANKMENT	CU YD	485.3
CONSTRUCTION STAKING	L SUM	1.0
REMOVAL AND DISPOSAL OF UNSUITABLE MATERIAL	CU YD	2600.0

NOTE:
BILL OF MATERIALS INCLUDES ONLY QUANTITIES FROM STA. 2+21.45 TO STA. 6+22.80, EXCEPT FOR NON-POROUS GRANULAR EMBANKMENT, CONSTRUCTION STAKING AND REMOVAL AND DISPOSAL OF UNSUITABLE MATERIAL, WHICH ARE GIVEN IN THEIR ENTIRETY.

SECTION APPLICATION TABLE

SECTION	STATIONS	X-SEC SHT
A - A	4+53.00 TO 6+22.80	7
B - B	GREATER THAN 6+22.80	7
C - C	2+21.45 TO 2+52.78	8
D - D	3+53.00 TO 4+53.00	8
E - E	2+52.78 TO 3+53.00	9
F - F	0+00.00 TO 2+21.45	12
G - G	5+49.00, 31.9LT TO 5+49.00 54.4LT	9
H - H	4+53.00, 49.4LT TO 4+53.00 54.4LT	9
I - I	5+49.00, 26.9LT TO 5+49.00 31.9LT	9
J - J	2+22.12, 38.9LT	14
R - R	2+22.12	9

NOTE:
FOR CROSS SECTIONS SEE SHEETS 7 TO 9, 12 AND 14