

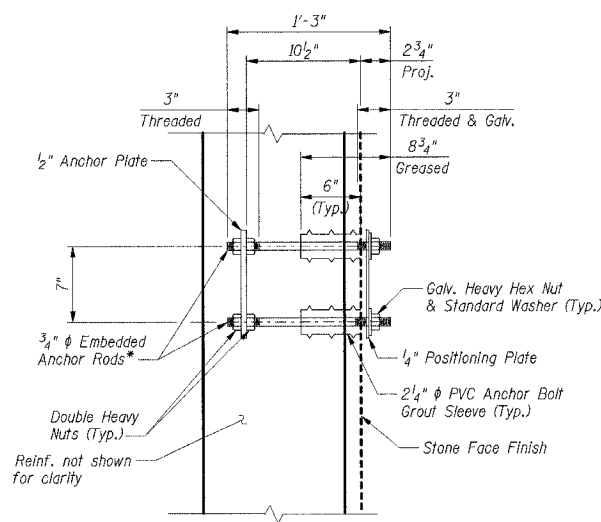
INDEX OF SHEETS

- S1 GENERAL PLAN & ELEVATION
- S2 GENERAL NOTES, BILL OF MATERIAL, & TYPICAL DETAILS
- S3 REMOVAL PLAN
- S4 SPILLWAY PLAN I
- S5 SPILLWAY PLAN II
- S6 SPILLWAY SECTIONS I
- S7 SPILLWAY SECTIONS II, BILL OF MATERIAL & BAR DETAILS
- S8 SOUTH ABUTMENT PLAN
- S9 SOUTH ABUTMENT ELEVATIONS I
- S10 SOUTH ABUTMENT ELEVATIONS II
- S11 SOUTH ABUTMENT SECTIONS & DETAILS
- S12 SOUTH ABUTMENT WALL FINISH DETAILS
- S13 SOUTH ABUTMENT BILL OF MATERIAL & BAR DETAILS
- S14 DENIL FISH LADDER FOOTING PLAN
- S15 DENIL FISH LADDER PLAN
- S16 DENIL FISH LADDER GRATING PLAN & DETAILS
- S17 DENIL FISH LADDER ELEVATIONS I
- S18 DENIL FISH LADDER ELEVATIONS II
- S19 DENIL FISH LADDER SECTIONS & DETAILS

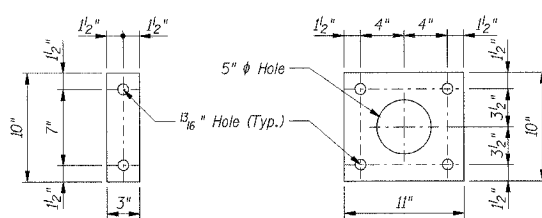
GENERAL NOTES

1. Anchor Rods shall conform to AASHTO M314 Gr. 36 or 55 with a minimum Charpy V-Notch (CVN) energy of 15 lb.-ft. at 40° F. Cost of furnishing and installing Anchor Rods is included with Concrete Structures.
2. Reinforcement bars shall conform to the requirements of AASHTO M31 or M322, Grade 60.
3. Plan dimensions and details relative to existing structures have been taken from existing plans and/or past surveys and reports and are subject to nominal construction variations. It shall be the Contractor's responsibility to verify such dimensions and details in the field and make necessary approved adjustments prior to construction or ordering of materials. Such variations shall not be cause for additional compensation for a change in the scope of work, however, the Contractor will be paid for the quantity actually furnished at the unit price bid for the work.
4. Bridge Seat Sealer shall be applied to the seat area of the Pedestrian Bridge Abutment.
5. All construction joints shall be bonded.
6. Excavation for structures within the construction stage cofferdam will not be paid for as Cofferdam Excavation but shall be paid for as Structure Excavation according to Section 502 of the Standard Specifications.

Bill of Material				
Item	Unit	Dam	Denil Fish Ladder	Total
ROCK EXCAVATION	CU YD	93	-	93
POROUS GRANULAR EMBANKMENT	CU YD	42	70	112
CONCRETE REMOVAL	CU YD	64.3	-	64.3
STRUCTURE EXCAVATION	CU YD	1,150	610	1,760
CONCRETE STRUCTURES	CU YD	1,753.2	192.9	1,946.1
REINFORCEMENT BARS, EPOXY COATED	POUND	195,930	31,740	227,670
BRIDGE SEAT SEALER	SQ FT	23	-	23
STONE FACE FINISH	SQ FT	2,905	-	2,905
GALVANIZED WELDED STEEL BAR GRATING	SQ FT	-	820	820
STAINLESS STEEL DEBRIS GRATE	EACH	-	1	1
ALUMINUM BAFFLES AND GUIDES	EACH	-	24	24



EMBEDMENT DETAIL



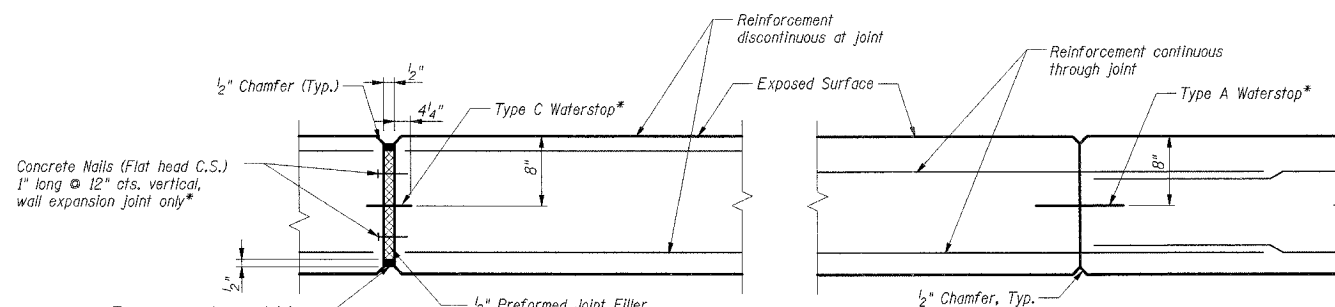
2 BOLT ARRANGEMENT

4 BOLT ARRANGEMENT

ANCHOR PLATE & POSITIONING PLATE

ANCHOR ROD ASSEMBLY

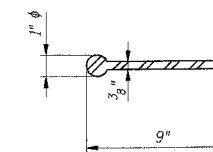
(16 Required. Cost included with Concrete Structures)
* For Anchor Rod locations, see Drwg. S9



EXPANSION JOINT

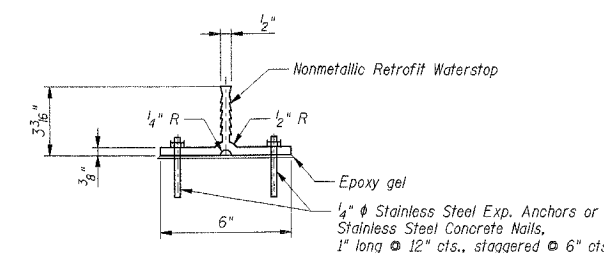
*Cost Included with Concrete Structures

CONSTRUCTION JOINT



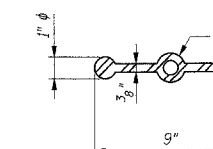
TYPE A WATERSTOP

Two Bulb Waterstop shall be provided at all vertical construction joints and as noted on the plans (Cost Included with Concrete Structures)



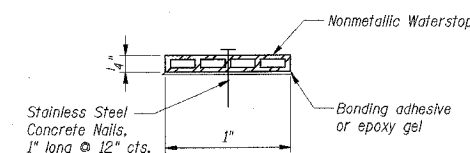
TYPE B WATERSTOP

Existing concrete surfaces in contact with waterstop shall be cleaned by sand blasting or grinding to assure a good bond. An epoxy gel bonding agent shall be applied per the manufacturer's instructions. (Cost included with Concrete Structures)



TYPE C WATERSTOP

Three Bulb Waterstop shall be provided at all expansion joints. (Cost included with Concrete Structures)



TYPE D WATERSTOP

Existing concrete surfaces in contact with waterstop shall be cleaned by sand blasting or grinding to assure a good bond. An epoxy gel bonding agent or bonding adhesive shall be applied per the manufacturer's instructions. (Cost included with Concrete Structures)

DESIGNED BY: RDS, CHECKED BY: NK, DRAWN BY: NK, DATE: 1-13-2016, PROJECT: YPS-0001, FILE: STRUC DOCUMENT\20160801\STRUCT.DWG (GEN)NOV2016