

FOR CONTINUATION OF HOMERUN CABLES SEE SHEET NO. 25.

RUNWAY 1-19 LTG HOMERUN CABLES

RUNWAY 9-27 LTG HOMERUN CABLES FOR CONTINUATION SEE SHEET NO. 26

PROPOSED 2-4" DIRECTIONAL BORE DUCT, 100 L.F. (AR110014). LEAVE ONE DUCT EMPTY FOR SPARE.

NOTE: ABANDONMENT AND/OR REMOVAL OF EXISTING CABLES SHALL BE INCIDENTAL TO THE RESPECTIVE REPLACEMENT CABLE PAY ITEM.

EXISTING VAULT TO BE REMOVED (AR109901)

TAXIWAY LTG HOMERUN CABLES

FOR CONTINUATION OF TAXIWAY LIGHTING CABLES SEE SHEET NO. 26.

INSTALL CABLES IN TURF AREA

EXISTING SERVICE METER PEDESTAL FOR EXIST. VAULT TO BE REMOVED (AR109901)

2/C #4 XLP-USE 600V UG CABLE IN UD FOR PLAS'S, 920 L.F. (AR108554). SPLICE NEW CABLE TO EXISTING HOMERUN CABLES IN EXIST. HH #2

APRON

PROPOSED LOW VOLTAGE HANDHOLE (AR110610)

PROPOSED 4-4" DIRECTIONAL BORE DUCT, 200 L.F. TERMINATE IN EACH ELECTRICAL HANDHOLE. (AR110014)

EXIST. HH #2 (LOW VOLTAGE). ALL HIGH VOLTAGE HOMERUN CKTS SHALL BE REMOVED FROM LOW VOLTAGE DUCT SYSTEM & REROUTED THRU HIGH VOLTAGE HANDHOLE TO VAULT. REMOVE EXISTING WIND-TEE CIRCUIT CABLES UPON INSTALLATION OF REPLACEMENT CABLES.

EXISTING 4-WAY DUCT BANK

PROPOSED 1-4" DIRECTIONAL BORE DUCT UNDER SIDEWALK, 10 L.F. (AR110014)

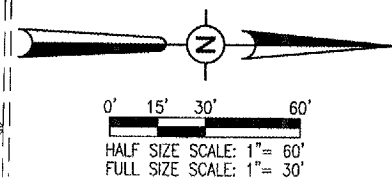
37/C #12 600V CONTROL CABLE IN UD TO L-821 PANEL, 560 L.F. (AR108800)

3/C #6 XLP-USE 600V CABLE IN UD FROM VAULT TO PROPOSED WIND CONE & ON TO WIND-TEE, 870 L.F. (AR108656)

CONNECT NEW CABLE BETWEEN LIGHTS TO ACCOMMODATE REROUTING OF TXY HOMERUN

THE LOCATION, SIZE AND TYPE OF MATERIAL OF EXISTING UNDERGROUND UTILITIES INDICATED ON THE PLANS IS NOT REPRESENTED AS BEING ACCURATE, SUFFICIENT OR COMPLETE. IT SHALL BE THE CONTRACTOR'S RESPONSIBILITY TO DETERMINE THE ACTUAL LOCATION OF ALL SUCH FACILITIES, INCLUDING SERVICE CONNECTIONS TO UNDERGROUND UTILITIES. PRIOR TO CONSTRUCTION, THE CONTRACTOR SHALL NOTIFY THE UTILITY COMPANIES OF HIS OPERATIONAL PLANS AND SHALL OBTAIN FROM THE RESPECTIVE UTILITY COMPANIES DETAILED INFORMATION AND ASSISTANCE RELATIVE TO THE LOCATION OF THEIR FACILITIES AND THE WORKING SCHEDULE OF THE COMPANIES FOR REMOVAL OR ADJUSTMENT WHERE REQUIRED. IN THE EVENT AN UNEXPECTED UTILITY INTERFERENCE IS ENCOUNTERED DURING CONSTRUCTION, THE CONTRACTOR SHALL IMMEDIATELY NOTIFY THE UTILITY COMPANY OF JURISDICTION. THE ENGINEER SHALL ALSO BE IMMEDIATELY NOTIFIED. ANY SUCH MAINS AND SERVICES SHALL BE RESTORED TO SERVICE AT ONCE AND PAID FOR BY THE CONTRACTOR AT NO ADDITIONAL COST TO THE CONTRACT.

CALL J.U.L.I.E. FOR UTILITY INFORMATION AT 1-800-892-0123.



BY	
REVISION	
DATE	

KEWANEE MUNICIPAL AIRPORT  
KEWANEE, HENRY COUNTY, ILLINOIS

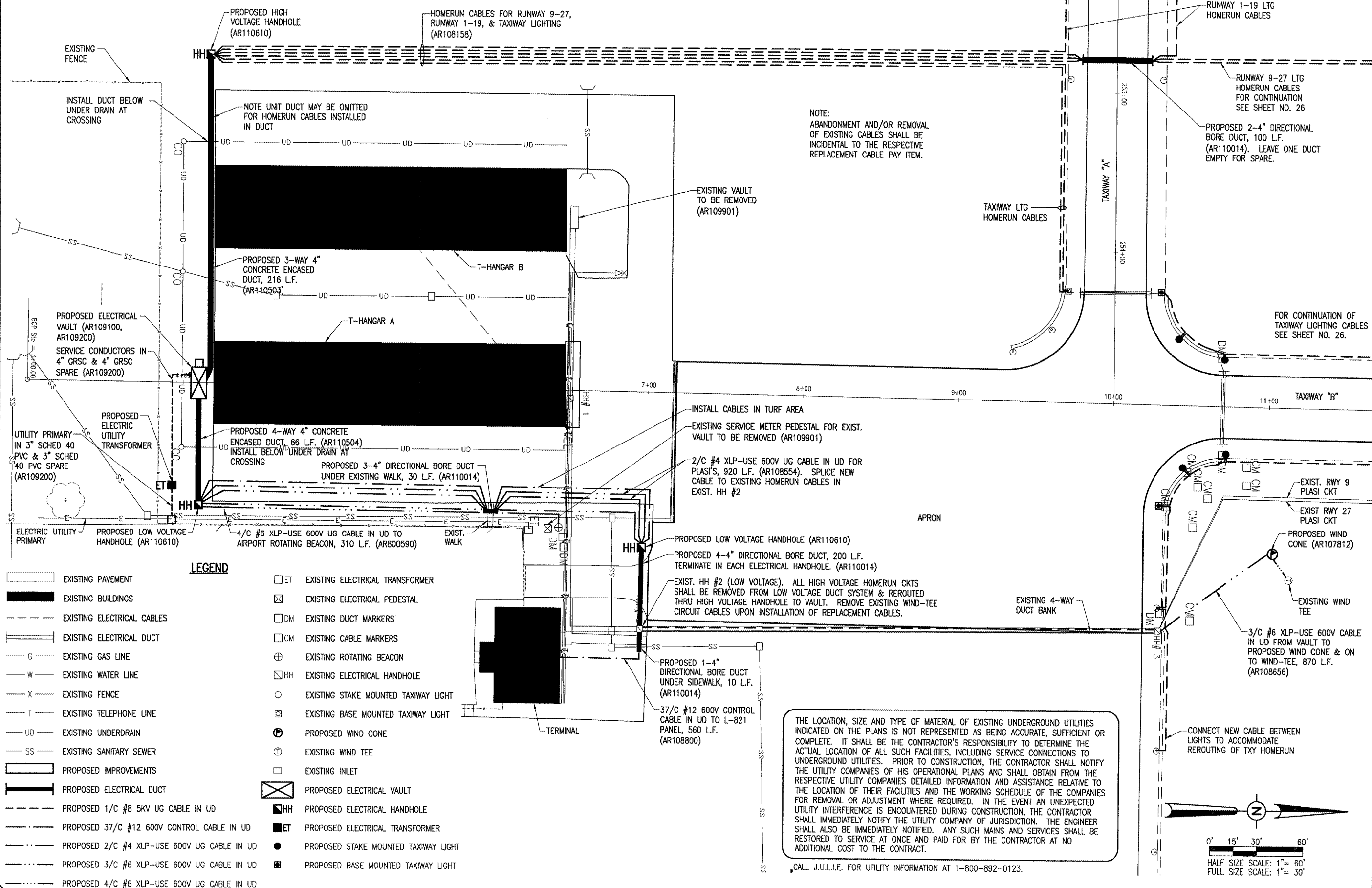
IL PROJ.: EZI-3533 A.I.P. PROJ.: 3-17-00568-B10

Project No.	810-06TXD 0800
Revision	R-102SIT.DWG
Scale	1"=30'
Date	08/15/05
LAYOUT	RAW 08/15/05
DRAWN	B.A.K. 08/15/05
REVIEWED	L.D.P. 01/17/06



OVERLAY TXY & APRON  
CONSTRUCT VAULT  
PROPOSED  
VAULT SITE  
PLAN

JAN 18, 2006 8:33 AM DMV  
I:\AIRPORTS\KEWANEE\810-06TXD\AIRPORT\SHEETS\R-102SIT.DWG - PROPOSED VAULT SITE



LEGEND

- EXISTING PAVEMENT
- EXISTING BUILDINGS
- EXISTING ELECTRICAL CABLES
- EXISTING ELECTRICAL DUCT
- EXISTING GAS LINE
- EXISTING WATER LINE
- EXISTING FENCE
- EXISTING TELEPHONE LINE
- EXISTING UNDERDRAIN
- EXISTING SANITARY SEWER
- PROPOSED IMPROVEMENTS
- PROPOSED ELECTRICAL DUCT
- PROPOSED 1/C #8 5KV UG CABLE IN UD
- PROPOSED 2/C #4 XLP-USE 600V UG CABLE IN UD
- PROPOSED 3/C #6 XLP-USE 600V UG CABLE IN UD
- PROPOSED 4/C #6 XLP-USE 600V UG CABLE IN UD
- ET EXISTING ELECTRICAL TRANSFORMER
- EXISTING ELECTRICAL PEDESTAL
- DM EXISTING DUCT MARKERS
- CM EXISTING CABLE MARKERS
- EXISTING ROTATING BEACON
- HH EXISTING ELECTRICAL HANDHOLE
- EXISTING STAKE MOUNTED TAXIWAY LIGHT
- EXISTING BASE MOUNTED TAXIWAY LIGHT
- PROPOSED WIND CONE
- EXISTING WIND TEE
- EXISTING INLET
- PROPOSED ELECTRICAL VAULT
- HH PROPOSED ELECTRICAL HANDHOLE
- ET PROPOSED ELECTRICAL TRANSFORMER
- PROPOSED STAKE MOUNTED TAXIWAY LIGHT
- PROPOSED BASE MOUNTED TAXIWAY LIGHT