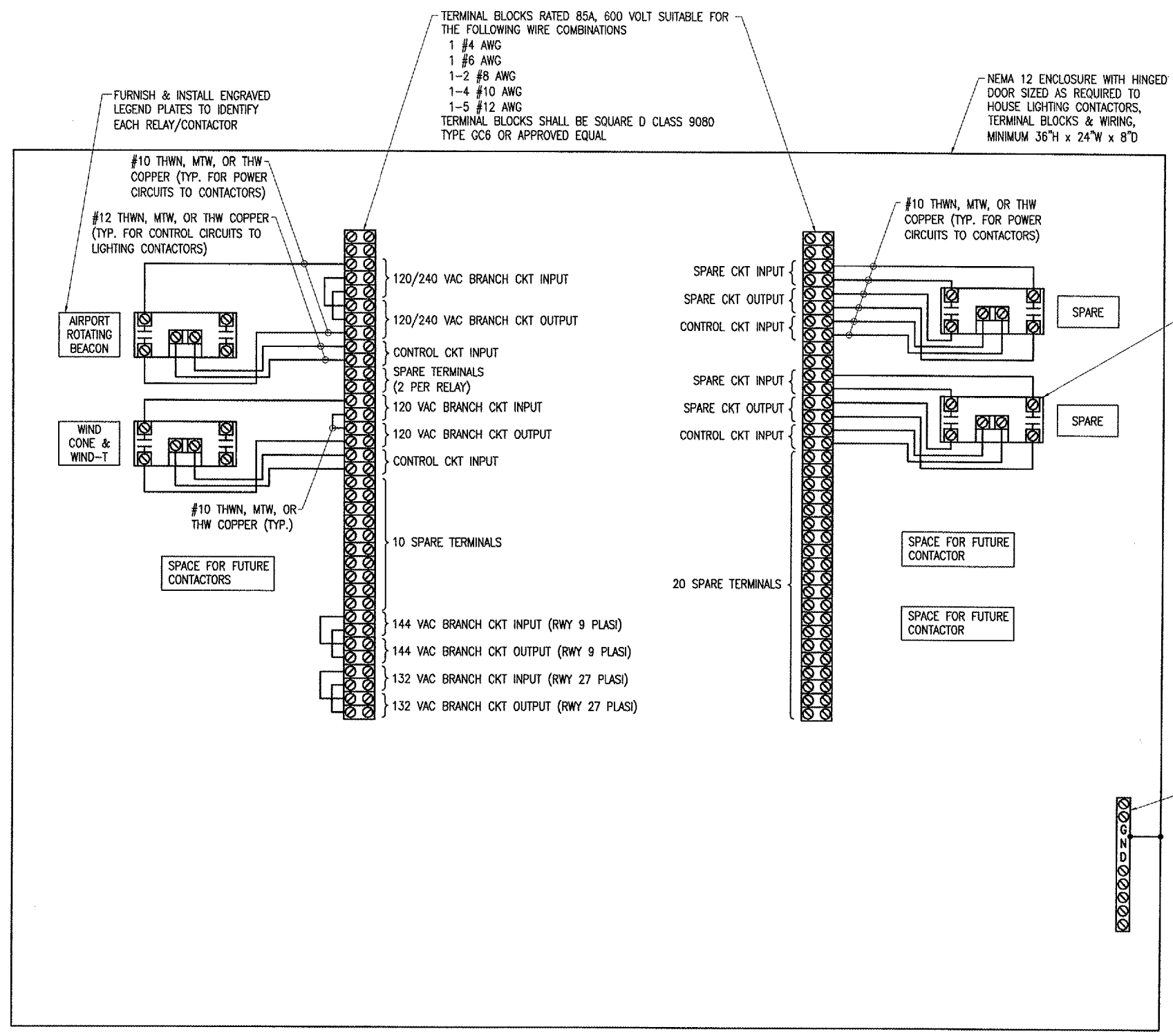


JAN 18, 2006 10:07 AM DMV
 I:\AIRPORTS\KEWANEE\810-061X10\AIRPORT\SHEETS\E-609.DWG - Work-FLR



NOTES

- 15 AMP & 20 AMP INPUT POWER/BRANCH CIRCUITS SHALL BE #10 AWG COPPER THWN FROM THE RESPECTIVE POWER SOURCE TO THE LIGHTING CONTACTOR PANEL. 30 AMP INPUT POWER/BRANCH CIRCUITS SHALL BE #8 AWG COPPER THWN (MIN.) FROM THE RESPECTIVE POWER SOURCE TO THE LIGHTING CONTACTOR PANEL.
- INPUT CONTROL CIRCUITS SHALL BE #12 AWG COPPER THWN.
- FOR 120 VAC BRANCH CIRCUITS THE NEUTRAL CONDUCTOR SHALL NOT BE SWITCHED THROUGH THE RELAY CONTACTS. USE TERMINAL BLOCKS TO TRANSITION FROM VAULT BRANCH CIRCUIT WIRING TO FIELD WIRING.
- THE AIRPORT ROTATING BEACON CIRCUIT SHALL HAVE PHASE "A" SWITCHED THROUGH THE LIGHTING CONTACTOR. PHASE "B" SHALL BE UNSWITCHED FROM THE POWER SOURCE TO THE LOAD CENTER AT THE BEACON.
- PROVIDE #10 AWG COPPER BONDING JUMPER FROM PANEL ENCLOSURE FRAME TO ENCLOSURE DOOR.

DATE	REVISION	BY

KEWANEE MUNICIPAL AIRPORT
 KEWANEE, HENRY COUNTY, ILLINOIS
 ILL. PROJ.: EZI-3533 A.I.P. PROJ.: 3-17-0058-B10

HEL Project No. 810-061X10-0800	FILED	09/23/05
Filename E-609.DWG	DATE	09/27/05
Scale NONE	DRAWN	01/17/06
Date 04/22/05	REVIEWED	LDP



OVERLAY TXY & APRON
 CONSTRUCT VAULT
 LIGHTING CONTACTOR
 PANEL DETAIL