

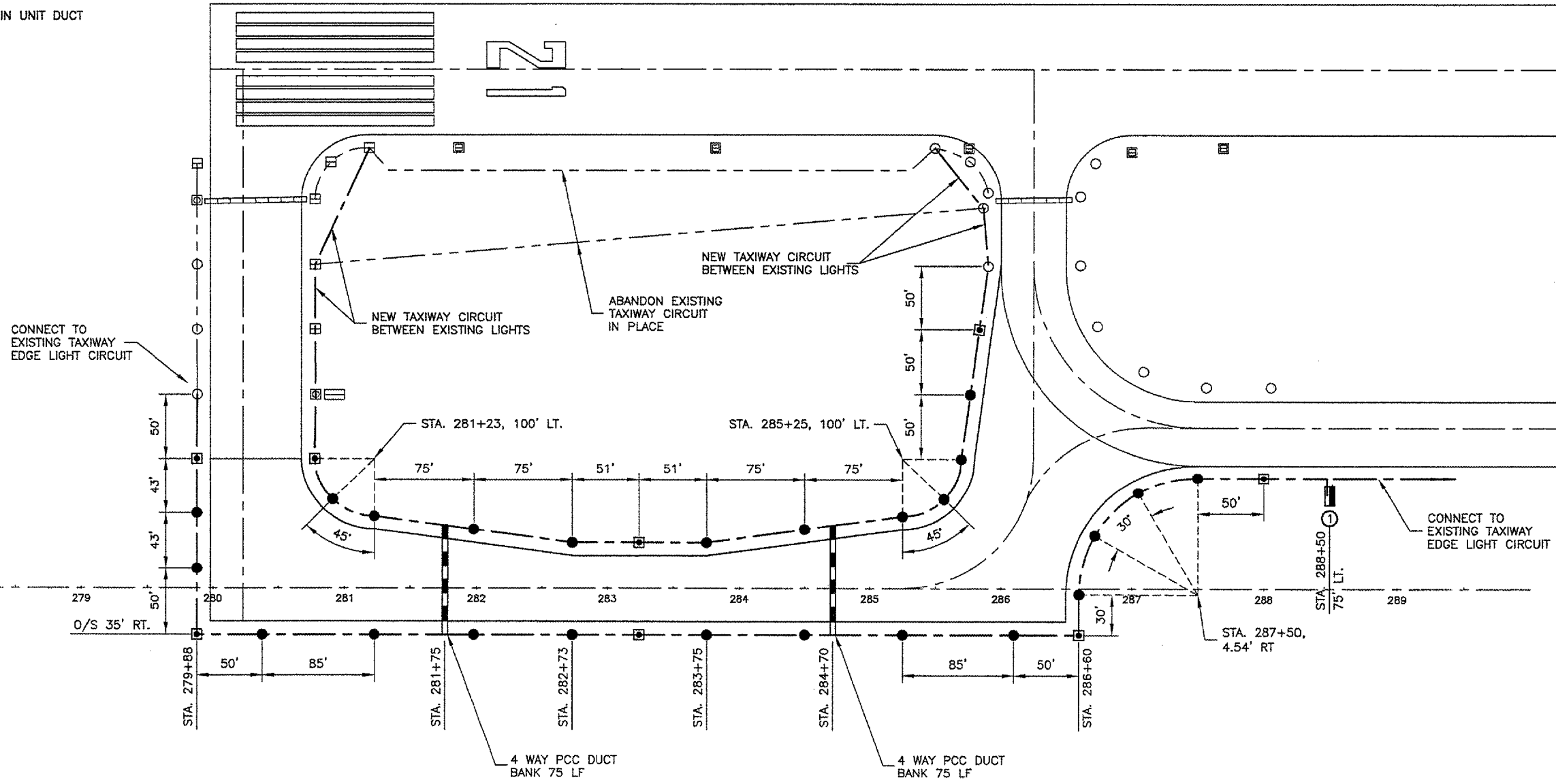
REVISIONS

NUMBER	BY	DATE

0 1 2
 THIS BAR IS EQUAL TO 2"
 AT FULL SCALE (34X22).

LEGEND

- ☐ EXISTING STAKE MOUNTED RUNWAY LIGHT
- EXISTING STAKE MOUNTED TAXIWAY LIGHT
- NEW STAKE MOUNTED TAXIWAY LIGHT
- ▣ EXISTING BASE MOUNTED RUNWAY LIGHT
- ◻ EXISTING BASE MOUNTED TAXIWAY LIGHT
- ◼ NEW BASE MOUNTED TAXIWAY LIGHT
- ▭ EXISTING AIRFIELD SIGNAGE
- NEW AIRFIELD SIGNAGE
- ⊕ EXIST SPLICE CAN
- ▬ EXISTING DUCT BANK
- ▬ NEW 4 WAY P.C.C. DUCT BANK
- EXISTING CABLE
- NEW 1/C #8 5KV CABLE IN UNIT DUCT



VERMILION COUNTY AIRPORT
 DANVILLE, ILLINOIS

EXTEND PARALLEL TAXIWAY 600 FEET
 ELECTRICAL & LIGHTING PLAN

© Copyright CMT, Inc.
CMT
 CRAWFORD, MURPHY & TILLY, INC.
 CONSULTING ENGINEERS
 License No. 84-000613



DESIGN BY:	JEF
DRAWN BY:	DPA
CHECKED BY:	SMH
APPROVED BY:	JEF
DATE:	01/13/2006
JOB No:	05042-0300
ILLINOIS PROJECT DNV-3537	
A.I.P. PROJECT 3--17--0032--B10	
SHEET	14 OF 29 SHEETS