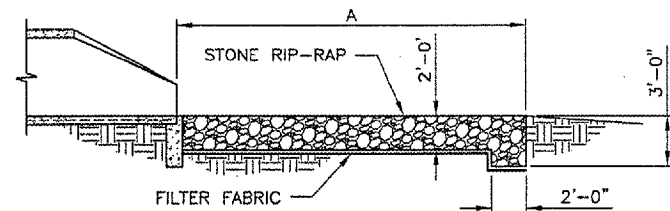


PLAN

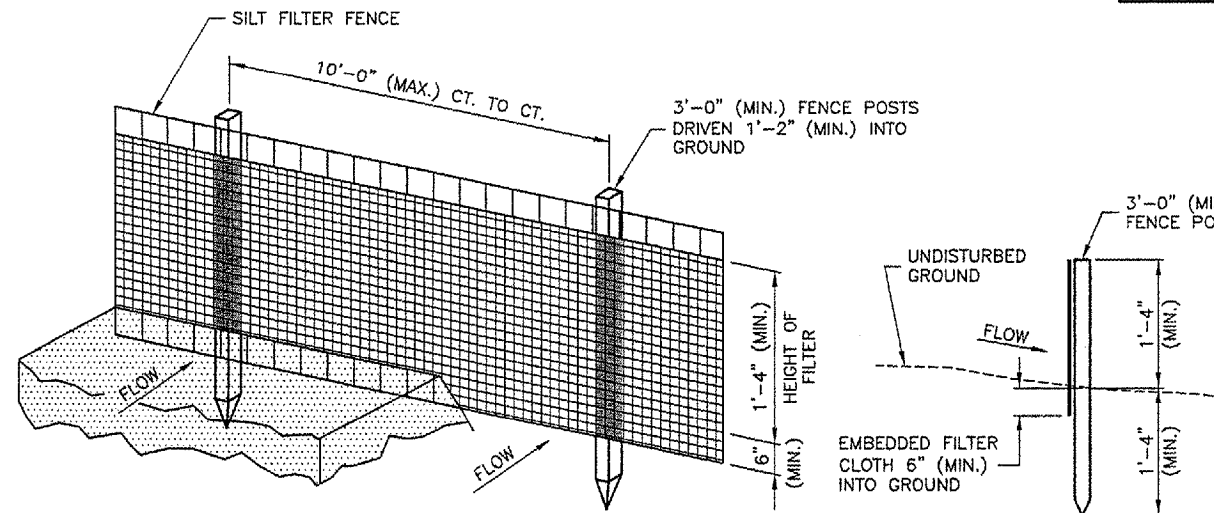


SECTION A-A

DIMENSIONS - TABLE 1			
INSIDE DIAMETER STORM SEWER (IN.)	INLET DIMENSION (FT.)		
	A	B	C
72"	26	16	7

THE ENGINEER SHALL DETERMINE THE FINAL RIP-RAP CONFIGURATION IN THE FIELD.

RIP-RAP DETAILS  
N.T.S.



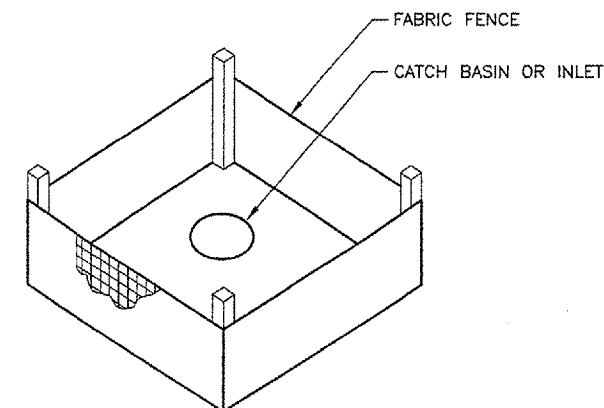
PERSPECTIVE VIEW

SECTION

EROSION CONTROL FABRIC FENCE DETAIL  
N.T.S.

NOTES

1. WOVEN WIRE FENCE TO BE FASTENED SECURELY TO FENCE POSTS WITH WIRE TIES OR STAPLES.
2. FILTER CLOTH TO BE FASTENED SECURELY TO WOVEN WIRE FENCE WITH TIES SPACED EVERY 2'-0" AT TOP AND MID SECTION.
3. WHEN TWO SECTIONS OF FILTER CLOTH ADJOIN EACH OTHER THEY SHALL BE OVERLAPPED BY 6" MINIMUM AND FOLDED.
4. MAINTENANCE SHALL BE PERFORMED AS NEEDED AND MATERIAL REMOVED WHEN "BULGES" DEVELOP IN THE SILT FENCE. MAINTENANCE, WHICH INCLUDES THE REPLACEMENT OF DAMAGED FENCE SHALL BE CONSIDERED INCIDENTAL TO THE COST OF THE EROSION CONTROL FENCE.



INLET PROTECTION WITH FABRIC  
N.T.S.

REVISIONS		
NUMBER	BY	DATE

0 1 2  
 THIS BAR IS EQUAL TO 2"  
 AT FULL SCALE (3/4"x22).

VERMILLION COUNTY AIRPORT  
 DANVILLE, ILLINOIS  
 EXTEND PARALLEL TAXIWAY 600 FEET  
 EROSION CONTROL DETAILS

© Copyright CMT, Inc.

**CMT**  
 CRAWFORD, MURPHY & TILLY, INC.  
 CONSULTING ENGINEERS  
 License No. 184-000618



DESIGN BY: JEF  
 DRAWN BY: DPA  
 CHECKED BY: SMH  
 APPROVED BY: JEF  
 DATE: 01/13/2006

JOB No: 05042-0300

ILLINOIS PROJECT DNV-3537  
 A.I.P. PROJECT 3-17-0032-B10