

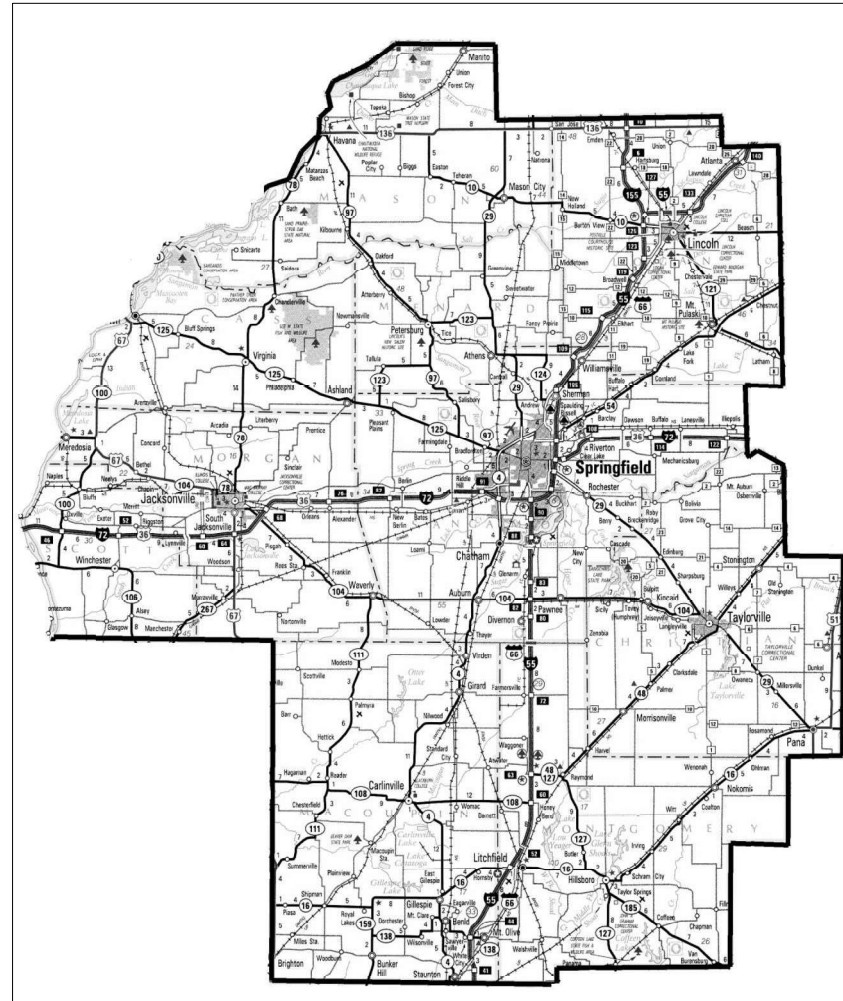
STATE OF ILLINOIS  
DEPARTMENT OF TRANSPORTATION  
DIVISION OF HIGHWAYS

**PROPOSED  
IMPROVEMENTS**

**VARIOUS ROUTES  
SECTION D6 SIGNAL/LIGHTING 2023  
SIGNAL & LIGHTING MAINTENANCE**

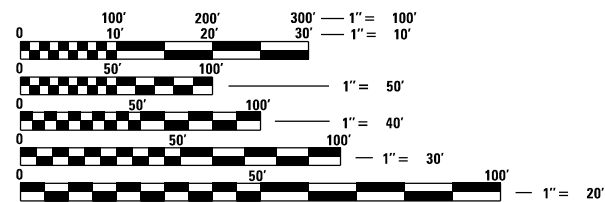
**VARIOUS COUNTIES**

C-96-067-23



LOCATION MAP

FOR INDEX OF SHEETS, SEE SHEET NO. 2



FULL SIZE PLANS HAVE BEEN PREPARED USING STANDARD ENGINEERING SCALES. REDUCED SIZED PLANS WILL NOT CONFORM TO STANDARD SCALES. IN MAKING MEASUREMENTS ON REDUCED PLANS, THE ABOVE SCALES MAY BE USED.

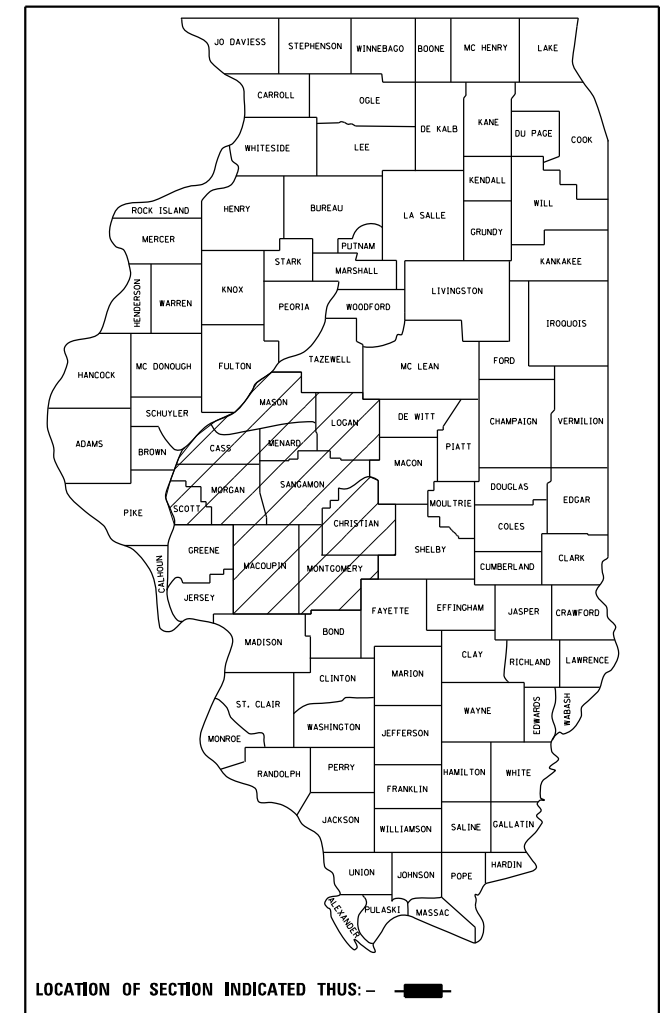
J.U.L.I.E.  
JOINT UTILITY LOCATION INFORMATION FOR EXCAVATION  
1-800-892-0123  
OR 811

PROJECT ENGINEER : MIKE HAMBY – (217)524-7765  
PROJECT MANAGER : TIM SHARP – (217)524-9160

CONTRACT NO. 72704

RTE.	SECTION	COUNTY	TOTAL SHEETS	SHEET NO.
VAR.	D6 SIGNAL/LIGHTING 2023	VARIOUS ILLINOIS	3	1
CONTRACT NO. 72704				

D-96-026-23



LOCATION OF SECTION INDICATED THIS: — [thick black bar] —

STATE OF ILLINOIS  
DEPARTMENT OF TRANSPORTATION  
DIVISION OF HIGHWAYS

SUBMITTED December 16, 2022

*John P. Meyer*  
REGIONAL ENGINEER

February 3, 2023  
*Scott A. Etkin*  
ENGINEER OF DESIGN AND ENVIRONMENT

February 3, 2023  
*Stephen M. Smith*  
DIRECTOR OF HIGHWAYS PROJECT IMPLEMENTATION


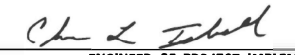

PRINTED BY THE AUTHORITY  
OF THE STATE OF ILLINOIS

INDEX OF SHEETS

1. COVER
2. INDEX OF SHEETS AND HIGHWAY STANDARDS
3. SUMMARY OF QUANTITIES AND GENERAL NOTES

HIGHWAY STANDARDS

- 701001-02 OFF-RD OPERATIONS, 2L, 2W, MORE THAN 15' AWAY FROM EDGE OF PAVEMENT  
 701006-05 OFF-RD OPERATIONS, 2L, 2W, 15' TO 24" FROM PAVEMENT EDGE  
 701011-04 OFF-RD MOVING OPERATION, 2L, 2W, DAY ONLY  
 701101-05 OFF-RD OPERATIONS, MULTILANE, 15' TO 24" FROM PAVEMENT EDGE  
 701106-02 OFF RD OPERATIONS, MULTILANE, MORE THAN 15' AWAY  
 701201-05 LANE CLOSURE, 2L, 2W, DAY ONLY, FOR SPEEDS ≥ 45 MPH  
 701206-05 LANE CLOSURE, 2L, 2W, NIGHT ONLY, FOR SPEEDS ≥ 45 MPH  
 701301-04 LANE CLOSURE, 2L, 2W, SHORT TIME OPERATIONS  
 701306-04 LANE CLOSURE, 2L, 2W, SLOW MOVING OPERATIONS DAY ONLY, FOR SPEED ≥ 45 MPH  
 701311-03 LANE CLOSURE, 2L, 2W, MOVING OPERATIONS - DAY ONLY  
 701400-11 APPROACH TO LANE CLOSURE, FREEWAY/EXPRESSWAY  
 701406-13 LANE CLOSURE, FREEWAY/EXPRESSWAY, DAY OPERATIONS ONLY  
 701411-09 LANE CLOSURE, MULTILANE, AT ENTRANCE OR EXIT RAMP, FOR SPEEDS ≥ 45 MPH  
 701421-08 LANE CLOSURE, MULTILANE, DAY OPERATIONS ONLY, OR SPEEDS ≥ 45 MPH TO 55 MPH  
 701422-10 LANE CLOSURE, MULTILANE, FOR SPEEDS ≥ 45 MPH TO 55 MPH  
 701426-09 LANE CLOSURE, MULTILANE, INTERMITTENT OR MOVINGOPER., FOR SPEEDS > 45 MPH  
 701427-05 LANE CLOSURE, MULTILANE, INTERMITTENT OR MOVING OPER., FOR SPEEDS < 40 MPH  
 701428-01 TRAFFIC CONTROL SETUP AND REMOVAL, FREEWAY/EXPRESSWAY  
 701446-11 TWO LANE CLOSURE FREEWAY/EXPRESSWAY  
 701451-05 RAMP CLOSURE FREEWAY/EXPRESSWAY  
 701456-05 PARTIAL EXIT RAMP CLOSURE FREEWAY/EXPRESSWAY  
 701501-06 URBAN LANE CLOSURE, 2L, 2W, UNDIVIDED  
 701502-09 URBAN LANE CLOSURE, 2L, 2W, WITH BIDIRECTIONAL LEFT TURN LANE  
 701601-09 URBAN LANE CLOSURE, MULTILANE, 1W OR 2W WITH NONTRAVERSABLE MEDIAN  
 701602-10 URBAN LANE CLOSURE, MULTILANE, 2W WITH BIDIRECTIONAL LEFT TURN LANE  
 701701-10 URBAN LANE CLOSURE, MULTILANE INTERSECTION  
 701801-06 SIDEWALK, CORNER OR CROSSWALK CLOSURE  
 701901-08 TRAFFIC CONTROL DEVICES  
 000001-08 STANDARD SYMBOLS, ABBREVIATIONS AND PATTERNS  
 821101-02 LUMINAIRE WIRING IN POLE

<b>STATE OF ILLINOIS DEPARTMENT OF TRANSPORTATION DIVISION OF HIGHWAYS DISTRICT 6</b>	
EXAMINED	December, 20 20 22
 ENGINEER OF OPERATIONS	
EXAMINED	December, 20 20 22
 ENGINEER OF PROJECT IMPLEMENTATION	
EXAMINED	December, 20 20 22
 ENGINEER OF PROGRAM DEVELOPMENT	

REV. - MS

FILE NAME =	USER NAME = Timothy.Sharp	DESIGNED -	REVISED -	<b>STATE OF ILLINOIS DEPARTMENT OF TRANSPORTATION</b>	<b>INDEX OF SHEETS AND HIGHWAY STANDARDS</b>	SCALE:	SHEET OF SHEETS STA. TO STA.																				
S:\CONTRMAINT_CAD\72704 - D6 LIGHTING	EAST\Plans\72704-sht2-gennote.dgn	DRAWN -	REVISED -																								
Default	PLOT SCALE = 58.2266' / in.	CHECKED -	REVISED -																								
	PLOT DATE = 12/19/2022	DATE -	REVISED -																								
<table border="1" style="width: 100%; border-collapse: collapse;"> <tr> <td style="width: 10%;">RTE.</td> <td style="width: 40%;">SECTION</td> <td style="width: 10%;">COUNTY</td> <td style="width: 10%;">TOTAL SHEETS</td> <td style="width: 10%;">SHEET NO.</td> </tr> <tr> <td>VAR.</td> <td>D6 SIGNAL/LIGHTING 2023</td> <td>VARIOUS</td> <td>3</td> <td>2</td> </tr> <tr> <td colspan="5" style="text-align: right;">CONTRACT NO. 72704</td> </tr> <tr> <td colspan="5" style="text-align: right;">ILLINOIS FED. AID PROJECT</td> </tr> </table>								RTE.	SECTION	COUNTY	TOTAL SHEETS	SHEET NO.	VAR.	D6 SIGNAL/LIGHTING 2023	VARIOUS	3	2	CONTRACT NO. 72704					ILLINOIS FED. AID PROJECT				
RTE.	SECTION	COUNTY	TOTAL SHEETS	SHEET NO.																							
VAR.	D6 SIGNAL/LIGHTING 2023	VARIOUS	3	2																							
CONTRACT NO. 72704																											
ILLINOIS FED. AID PROJECT																											

				6-00361-9990
				CONSTR. CODE
				TOTAL QUANTITY
				100% STATE
				0021
CODE NO.	ITEM	UNIT	QUANTITY	RURAL
82110007	LUMINAIRE, LED, ROADWAY, OUTPUT DESIGNATION G	EACH	50	50
X1400035	150W HPS LAMP/NON CYCLING	EACH	20	20
X1400036	250W HPS LAMP/NON CYCLING	EACH	250	250
X1400037	400W HPS LAMP/NON CYCLING	EACH	90	90
X1400039	150W-240V HPS TRANSFORMER KIT	EACH	6	6
X1400040	250W-240V HPS TRANSFORMER KIT (GE)	EACH	20	20
X1400041	250W-480V HPS TRANSFORMER KIT (GE)	EACH	20	20
X1400042	250W-480V HPS TRANSFORMER KIT (HOLOPHANE)	EACH	20	20
X1400043	12" SIGNAL HEAD W/O MSOR (POLYCARBONATE)	EACH	20	20
X1400044	12" SIGNAL HEAD MSOR (POLYCARBONATE)	EACH	20	20
X1400045	ELASTIMOLD FUSE HOLDER	EACH	35	35
X1400046	RED MARKING PAINT	EACH	75	75
X1400047	SOLID STATE NEMA FLASHER	EACH	10	10
X1400048	SOLID STATE NEMA LOAD SWITCH	EACH	30	30
X1400049	12" LED MODULE (GREEN)	EACH	15	15
X1400050	12" LED MODULE (YELLOW)	EACH	10	10
X1400051	12" LED MODULE (RED)	EACH	15	15
X1400052	250W-240V HPS TRANSFORMER KIT (HOLOPHANE)	EACH	10	10
X1400054	150W-480V HPS TRANSFORMER KIT	EACH	10	10
X1400055	400W-240V HPS TRANSFORMER KIT	EACH	10	10
X1400056	400W-480V HPS TRANSFORMER KIT	EACH	10	10
X1400057	FNM 10 BUSS FUSE	EACH	150	150
X1400058	10 AMP CONTROL FUSE	EACH	50	50
X1400063	#6 USE WIRE	FOOT	2,000	2,000
X1400064	#10 USE WIRE	FOOT	3,500	3,500
X1400066	SURRESTOR	EACH	34	34
X1400067	SET 4 BREAKAWAY COUPLERS (TRANSP0 4100)	EACH	20	20
X1400068	45' WEATHERING STEEL POLE (VALMONT)	EACH	14	14
X1400069	53' WEATHERING STEEL POLE (VALMONT)	EACH	6	6
X1400070	50' ALUMINUM 15' DAVIT ARM POLE	EACH	3	3
X1400071	50' ALUMINUM 15' DUAL DAVIT ARM POLE	EACH	3	3
X1400074	BUS INTERFACE UNIT	EACH	12	12
X1400076	COBALT CONTROLLER	EACH	4	4
X1400209	45' ALUMINUM LIGHT POLE WITH 15' DAVIT ARM	EACH	2	2
X1400361	1-PORT MOXA GIGABIT ETHERNET MODULE "SFP-IGLXLC-T"	EACH	4	4
X1400362	AUTOSCOPE VISON COMM MANAGER	EACH	2	2
X1400363	MOXA "ADS-510E-3GTXSFP-T" ETHERNET SWITCH WITH DIN RAIL POWER SUPPLY	EACH	4	4
X1400364	AXIS MODEL 06042-E DOME CAMERA ASSEMBLY	EACH	2	2
X8210402	LUMINAIRE MOUNTING BRACKET - SPECIAL	EACH	50	50
X8250230	PHOTOCELL	EACH	30	30
XP000001	JOURNEYMAN ELECTRICIAN	HOUR	1,010	1,010
XP000003	JOURNEYMAN ELECTRICIAN (WEEKLY OVERTIME RATE)	HOUR	32	32
XP000004	JOURNEYMAN ELECTRICIAN (SATURDAY OVERTIME RATE)	HOUR	32	32
XP000005	JOURNEYMAN ELECTRICIAN (SUNDAY AND HOLIDAY OVERTIME RATE)	HOUR	32	32
XP000009	PICK-UP TRUCK	HOUR	500	500
XP000010	BUCKET TRUCK (LENGTH LESS THAN 35 FEET)	HOUR	180	180
XP000011	BUCKET TRUCK (LENGTH 35 TO 65 FEET)	HOUR	300	300

**GENERAL NOTES**

This work is located on various routes in Mason, Menard, Cass, Morgan, Scott, Logan, Sangamon, Christian, Montgomery and Macoupin counties all located within Region 4, District 6. The work included in this section consists of maintaining and repairing the electrical systems and all other work necessary to complete this section.

The locations of the repair areas shall be determined by the engineer.

All work is to be replaced in kind or, as indicated on the contract plans or provisions.

Removal of damaged materials will include dismantling, loading, hauling, and disposal.

Any necessary traffic control will be provided by the contractor; appropriate standards are listed on Sheet No. 2. Traffic control shall not be paid for as separate pay items, but shall be considered a part of the contract.

The work site shall be left in a safe and orderly condition.

No material should be left on or near the roadway during non-working hours.

All excavated material, which includes digging or grading of any soil or fill material, with the exception of aggregate fills, must be left on, or incorporated within, the IDOT right-of-way due to environmental documentation requirements.

Any work order may be cancelled at the engineer's discretion.

English units of measurement shall govern over and supersede any metric units in this contract. Where included, metric units are for information only.

Electronic files and/or electronic survey information including CADD files will not be available for this project to the contractor.

No overnight lane closures will be allowed, unless emergency conditions exist.

Any reference to a standard in these plans shall be interpreted to mean the edition as indicated by the subnumber shown in the list of standards or the copy included in these plans.

REV. - MS

FILE NAME = S:\CONTRMAINT_CAD\72704 - D6 LIGHTING	USER NAME = Timothy.Sharp	DESIGNED - _____	REVISED - _____	<b>STATE OF ILLINOIS DEPARTMENT OF TRANSPORTATION</b>	<b>SUMMARY OF QUANTITIES AND GENERAL NOTES</b>	RTE.	SECTION	COUNTY	TOTAL SHEETS	SHEET NO.	
SHT.PLAN	EAST\Plans\72704-sht3-500.dgn	DRAWN - _____	REVISED - _____			VAR.	D6 SIGNAL/LIGHTING 2023	VARIOUS	3	3	
	PLOT SCALE = 2.9644' / in.	CHECKED - _____	REVISED - _____			CONTRACT NO. 72704					
	PLOT DATE = 12/16/2022	DATE - _____	REVISED - _____			ILLINOIS FED. AID PROJECT					