

STATE OF ILLINOIS
DEPARTMENT OF TRANSPORTATION

| F.A.I. RTE. | SECTION | COUNTY | TOTAL SHEETS | SHEET NO. |
|-------------|--------------------------|----------|--------------------|-----------|
| 72 | D7 BRIDGE REPAIRS 2023-7 | MACON | 9 | 1 |
| | | ILLINOIS | CONTRACT NO. 74B16 | |

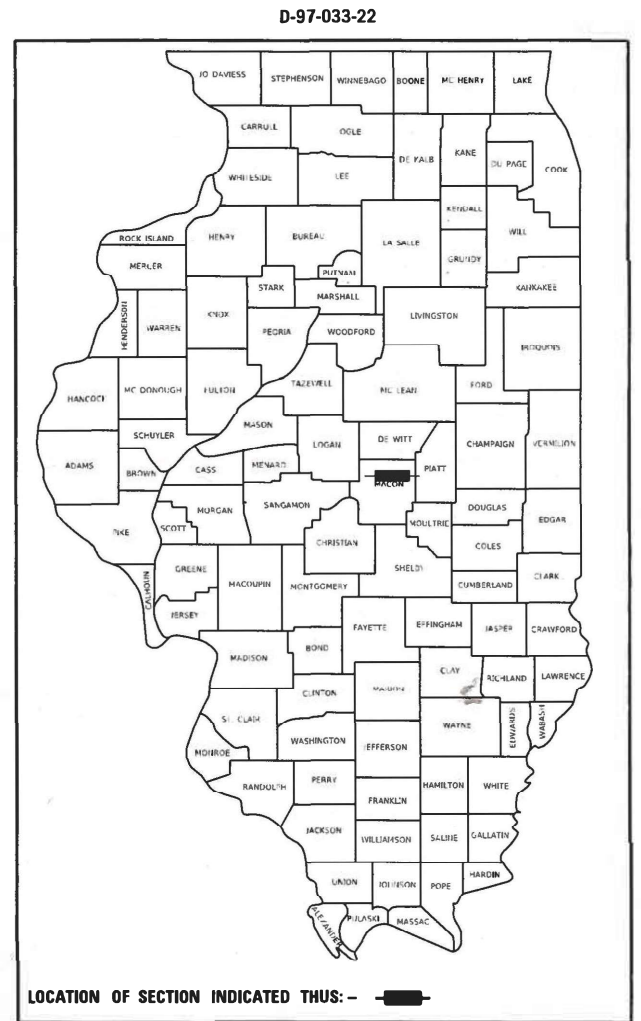
FOR INDEX OF SHEETS, SEE SHEET NO. 2

PROPOSED HIGHWAY PLANS

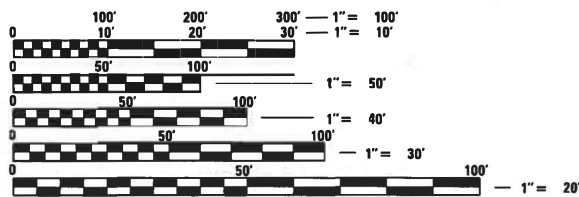
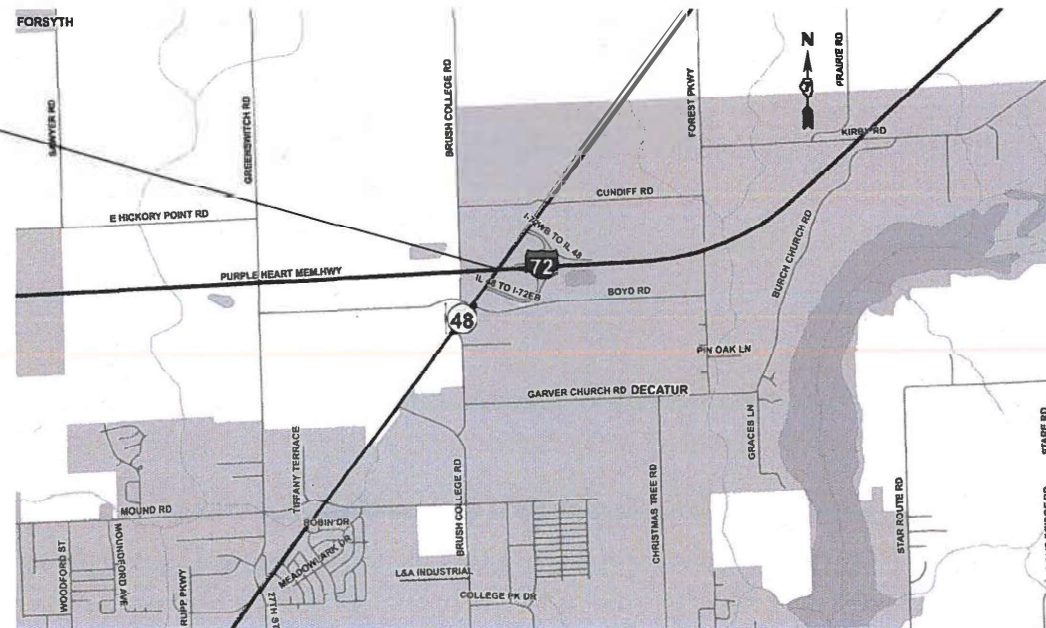
FAI ROUTE 72 (I-72)
SECTION D7 BRIDGE REPAIRS 2023-7
PROJECT NHPP-ZZSV(089)
BRIDGE REPAIR
MACON COUNTY

ADT = 11200 (2022)

C-97-080-22



FAI I 72
SN 058-0084
SN 058-0085



FULL SIZE PLANS HAVE BEEN PREPARED USING STANDARD ENGINEERING SCALES. REDUCED SIZED PLANS WILL NOT CONFORM TO STANDARD SCALES. IN MAKING MEASUREMENTS ON REDUCED PLANS, THE ABOVE SCALES MAY BE USED.

J.U.L.I.E.
JOINT UTILITY LOCATION INFORMATION FOR EXCAVATORS
1-800-892-0123
OR 811

PROJECT ENGINEER: MATT BOWER
PROJECT MANAGER: MICHELE REEDER

CONTRACT NO. 74B16

STATE OF ILLINOIS
DEPARTMENT OF TRANSPORTATION

SUBMITTED DECEMBER 15, 2023

Jeffrey P. Meyer
REGIONAL ENGINEER

February 3, 2023

Scott A. Etkin
ENGINEER OF DESIGN AND ENVIRONMENT

February 3, 2023

Stephen M. Auer
DIRECTOR OF HIGHWAYS PROJECT IMPLEMENTATION

PRINTED BY THE AUTHORITY
OF THE STATE OF ILLINOIS

INDEX OF SHEETS

SHEET NO. ITEM

- 1 COVER SHEET
- 2 INDEX OF SHEETS, HIGHWAY STANDARDS & GENERAL NOTES
- 3 SUMMARY OF QUANTITIES
- 4-9 REPAIR DETAILS

THE FOLLOWING STANDARDS ARE A PART OF THESE PLANS AND ARE INCLUDED FOLLOWING THE LAST NUMBERED SHEET OF THE PLANS.

STD. NO. DESCRIPTION

- 000001-08 STANDARD SYMBOLS, ABBREVIATIONS, AND PATTERNS
- 001006 DECIMAL OF AN INCH AND OF A FOOT
- 701101-05 OFF-ROAD OPERATIONS, MULTILANE, 15' TO 24" FROM PAVEMENT EDGE
- 701106-02 OFF-ROAD OPERATIONS, MULTILANE, MORE THAN 15' AWAY
- 701400-11 APPROACH TO LANE CLOSURE, FREEWAY/EXPRESSWAY
- 701401-13 LANE CLOSURE, FREEWAY/EXPRESSWAY
- 701406-13 LANE CLOSURE, FREEWAY/EXPRESSWAY, DAY OPERATIONS ONLY
- 701411-09 LANE CLOSURE, MULTILANE, AT ENTRANCE OR EXIT RAMP, FOR SPEEDS >= 45 MPH
- 701428-01 TRAFFIC CONTROL, SETUP AND REMOVAL, FREEWAY/EXPRESSWAY
- 701601-09 URBAN LANE CLOSURE, MULTILANE, 1W OR 2W WITH NONTRAVERSABLE MEDIAN
- 701901-08 TRAFFIC CONTROL DEVICES

GENERAL NOTES

THE WORK INCLUDED IN THIS SECTION CONSISTS OF BEARING REPLACEMENT AND ANY OTHER WORK NECESSARY TO COMPLETE THE SECTION.

THE CONTRACTOR SHALL NOTIFY TFG TRANSPORT A MINIMUM OF 30 DAYS PRIOR TO BEGINNING CONSTRUCTION OPERATIONS WHICH MAY IMPACT RAIL FACILITIES. NECESSARY FLAGGING OR REMOVAL OF RAIL FROM SERVICE HAS BEEN COORDINATED WITH TFG TRANSPORT AND WILL BE BILLED DIRECTLY TO THE DISTRICT. THE RAILROAD CONTACT IS AS FOLLOWS:

DERRICK BRUHN
 420 W. MARION STREET
 MONTICELLO, IL 62856
 217-762-2163
 DBRUHN@TFGRAIN.COM

REV. - MS

MODEL: Default
 FILE: Mainfile: p:\ulidect-cw-bentley.com\PROJECTS\74B\6\CAD\DATA\CAD\Sheets\DOT\Office\District: 7\Projects\74B\6\CAD\DATA\CAD\Sheets\DOT\74B16-16-16-16.dgn

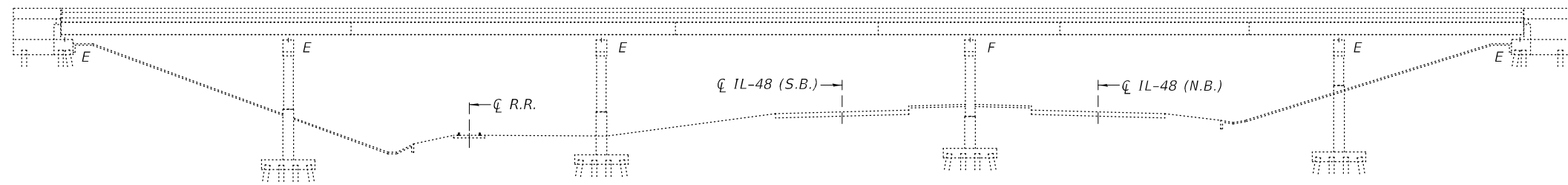
| | | |
|------------------------------|------------|-----------|
| USER NAME = Mona.Steffen | DESIGNED - | REVISED - |
| | DRAWN - | REVISED - |
| PLOT SCALE = 100.0000' / in. | CHECKED - | REVISED - |
| PLOT DATE = 12/15/2022 | DATE - | REVISED - |

**STATE OF ILLINOIS
 DEPARTMENT OF TRANSPORTATION**

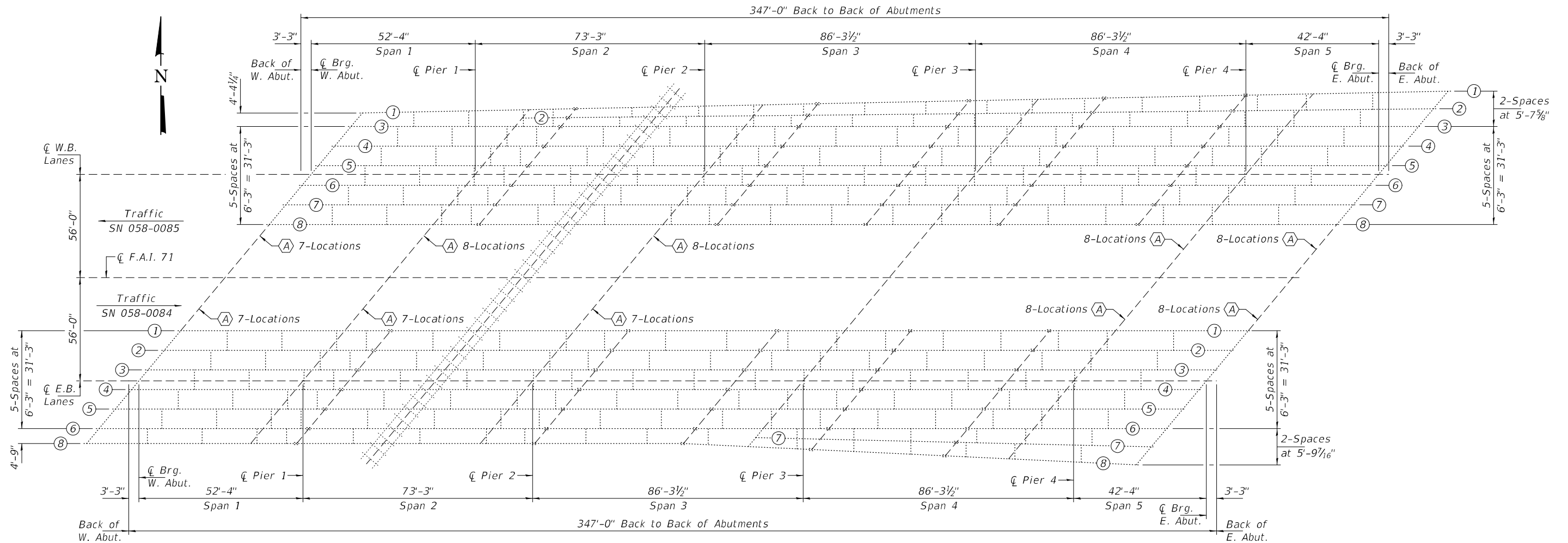
INDEX OF SHEETS, HIGHWAY STANDARDS, AND GENERAL NOTES

SCALE: SHEET 2 OF 9 SHEETS STA. TO STA.

| F.A.I. RTE. | SECTION | COUNTY | TOTAL SHEETS | SHEET NO. |
|-------------|--------------------------|--------|---------------------------|-----------|
| 72 | D7 BRIDGE REPAIRS 2023-7 | MACON | 9 | 2 |
| | | | CONTRACT NO. 74B16 | |
| | | | ILLINOIS FED. AID PROJECT | |



ELEVATION



FRAMING PLAN

(A) - Remove & Replace Existing Bearings at each Abutment and Piers 1, 2, & 4 on each structure. (76-Locations)

GENERAL NOTES

All structural steel shall conform to AASHTO Classification M-270 Gr. 36, unless otherwise noted.
 Plan dimensions and details relative to existing plans are subject to nominal construction variations. The Contractor shall field verify existing dimensions and details affecting new construction and make necessary approved adjustments prior to construction or ordering of materials. Such variations shall not be cause for additional compensation for a change in scope of the work, however, the Contractor will be paid for the quantity actually furnished at the unit price bid for the work.
 Cost of removal and re-installation of all members necessary to complete the work as detailed on the plans and as specified in the Special Provisions shall be included with Furnishing and Erecting Structural Steel.

The existing structural steel coating contains lead. The Contractor shall take appropriate precautions to deal with the presence of lead on this project.
 Existing structural steel that will be in contact with new structural steel shall be cleaned and painted prior to erection as required by the special provision "Cleaning and Painting Contact Surface Areas of Existing Steel Structures".
 New bearing plates, steel extensions, shim plates, side retainers, anchor bolts, connection bolts, nuts and washers shall be hot dip galvanized according to Special Provision "Hot Dip Glavanizing for Structural Steel".

TOTAL BILL OF MATERIAL

| ITEM | UNIT | QUANTITY |
|--|-------|----------|
| Jack and Removal Existing Bearings | Each | 76 |
| Elastomeric Bearing Assembly, Type I | Each | 46 |
| Elastomeric Bearing Assembly, Type II | Each | 30 |
| Furnishing & Erecting Structural Steel | Pound | 14,990 |
| Anchor Bolts, 1"Ø | Each | 152 |



Expires: November 30, 2024

| |
|-------------------------------|
| DESIGNED - Adrian T. Halloway |
| CHECKED - Chi-Cheung Chau |
| DRAWN - STEFFEN |
| CHECKED - ATH CCC |

PASSED
 Jayme F. Schiff
 ENGINEER OF BRIDGES AND STRUCTURES

| |
|-------------------------|
| DATE - JANUARY 13, 2023 |
| REVISED - |
| REVISED - |

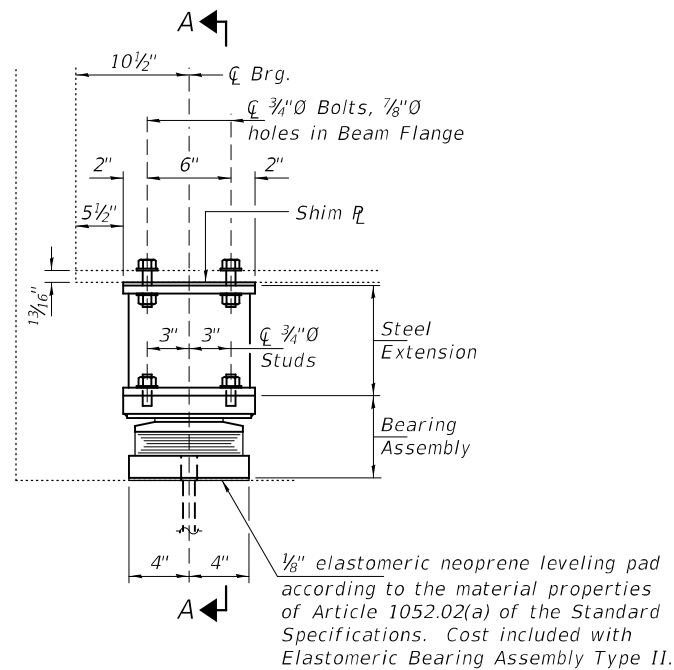
STATE OF ILLINOIS
 DEPARTMENT OF TRANSPORTATION

FRAMING PLAN & ELEVATION
 F.A.I. 72 OVER IL ROUTE 48 & I.C. R.R.
 SN 058-0084 (E.B.) & -0085 (W.B.)

SHEET NO. 1 OF 6 SHEETS

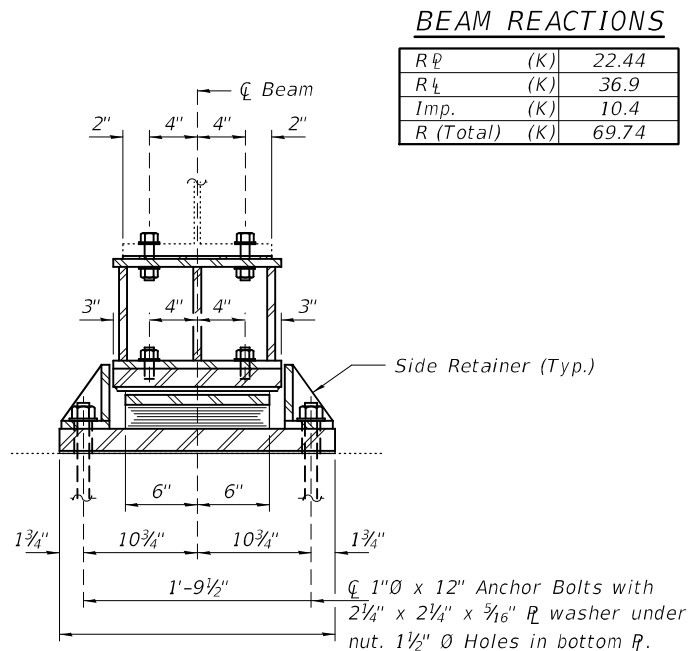
| F.A.I. RTE. | SECTION | COUNTY | TOTAL SHEETS | SHEET NO. |
|-------------|--------------------------|--------|------------------|-----------|
| 72 | D7 BRIDGE REPAIRS 2023-7 | MACON | 9 | 4 |
| ILLINOIS | | | FED. AID PROJECT | |

CONTRACT NO. 74B16



ELEVATION AT W. ABUT.

TYPE II TFE ELASTOMERIC EXP. BRG.



SECTION A-A

BEAM REACTIONS

| | | |
|----------------|-----|-------|
| R _φ | (K) | 22.44 |
| R _L | (K) | 36.9 |
| Imp. | (K) | 10.4 |
| R (Total) | (K) | 69.74 |

Notes:

Diaphragm removal and reinstallation may be required to facilitate drilling holes. Cost included with Furnishing and Erecting Structural Steel.

New steel extensions, shim plates and connection bolts are included with Furnishing and Erecting Structural Steel. Prior to ordering any material, the Contractor shall verify in the field all bearing height and shim thickness dimensions. Adjustment must account for deck heave due to pack rust (if present).

Min. jack capacity = 55 Tons.

Anchor bolts shall be ASTM F1554 all-thread (or an Engineer-approved alternate material) of the grade(s) and diameter(s) specified. ASTM A307 Grade C anchor bolts may be used in lieu of ASTM F1554 Grade 36 (F_y=36ksi). The corresponding specified grade of AASHTO M314 anchor bolts may be used in lieu of ASTM F1554.

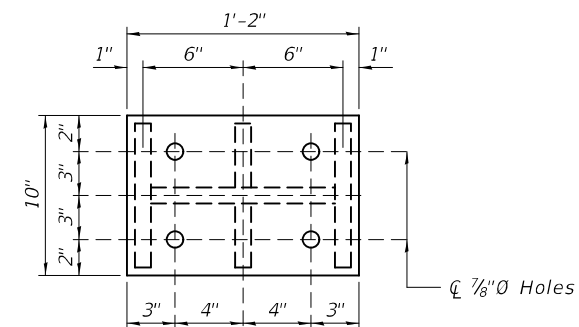
Anchor bolts for Type II bearings shall be placed in holes drilled through the bottom bearing plate after members are in place. Side retainers shall be placed after bolts are installed.

Drilled and set anchor bolts shall be installed according to Article 521.06 of the Standard Specifications.

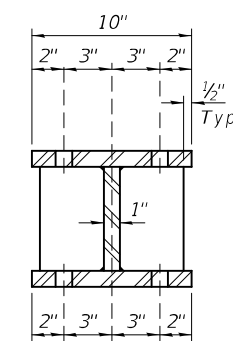
Side retainers shall be included in the cost of Elastomeric Bearing Assembly, Type II.

The 1/8" PTFE sheet shall be bonded directly to the top steel plate with a two-component, medium viscosity epoxy resin, conforming to the requirements of the Federal Specification MMM-A-134, Type I. The bond agent shall be applied on the full area of the contact surfaces.

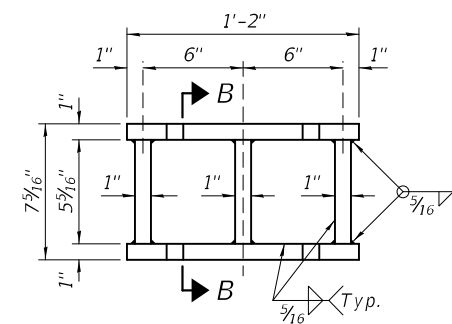
Bonding of 1/8" PTFE sheet during vulcanizing process will be permitted provided the process and method of adjusting assembly height is approved by the Engineer.



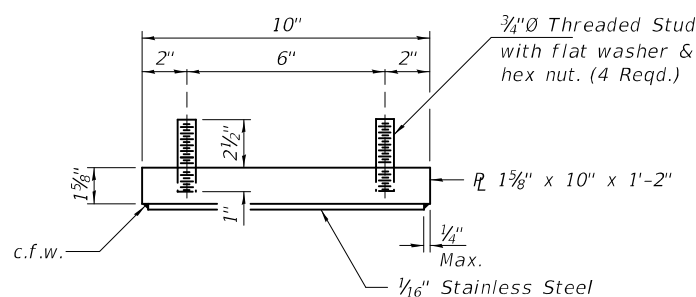
PLAN TOP AND BOTTOM PLATE



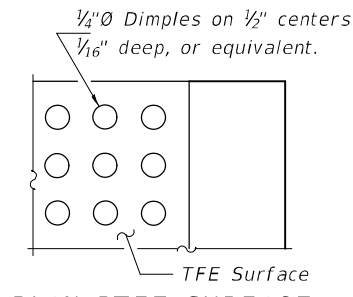
SECTION B-B



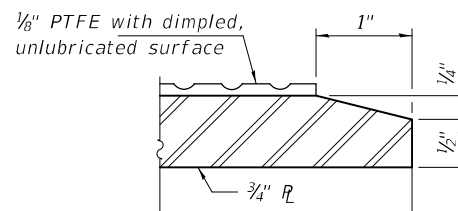
STEEL EXTENSION DETAIL



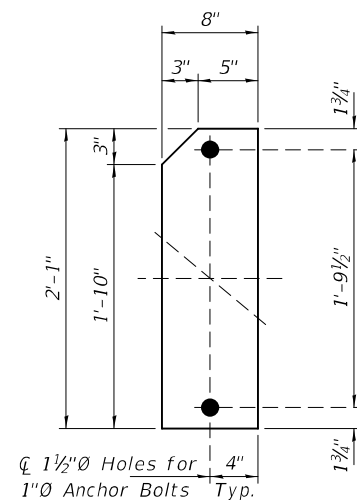
TOP BEARING ASSEMBLY



PLAN-PTFE SURFACE

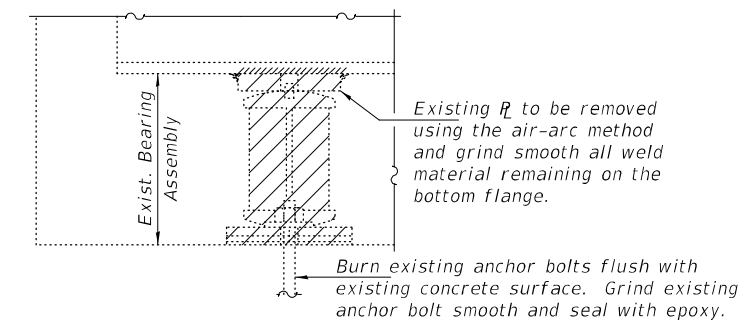


SECTION THRU PTFE



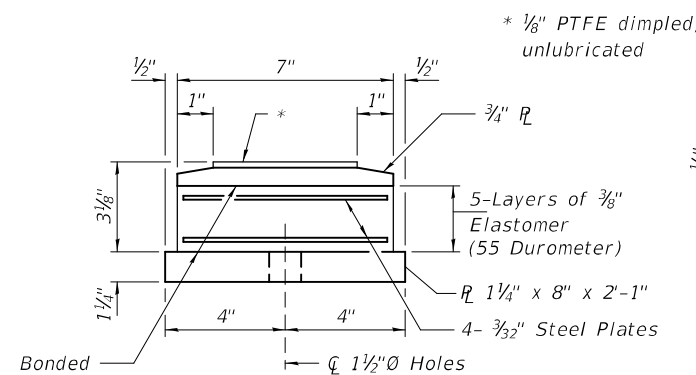
BOTTOM PLATE DETAIL

1 1/2" diameter holes for 1" anchor bolts (14-Required)



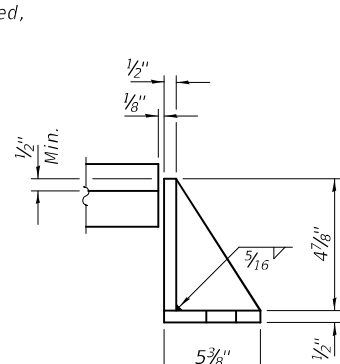
EXISTING BEARING REMOVAL DETAIL

Cost included with Jack and Remove Existing Bearings.

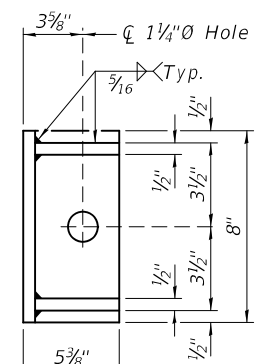


BOTTOM BEARING ASSEMBLY

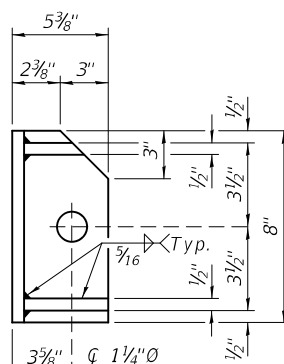
* 1/8" PTFE dimpled, unlubricated



TYPICAL SECTION



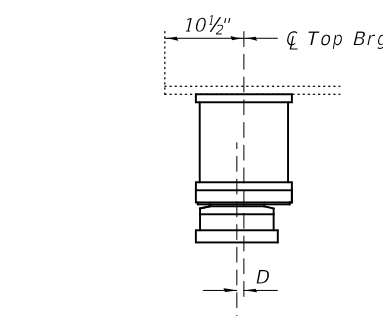
SIDE RETAINER TYPE "A" (14-Required)



SIDE RETAINER TYPE "B" (14-Required)

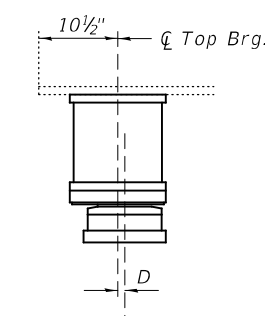
SIDE RETAINER DETAILS

Equivalent rolled angle with stiffeners will be allowed in lieu of welded plates.



BELOW 50° F.

(Move bott. brg. away from fixed brg.)



ABOVE 50° F.

(Move bott. brg. toward fixed brg.)

SETTING ANCHOR BOLTS AT EXP. BRG.

D = 1/8" per each 100' of expansion for every 15° temp. change from the normal temp. of 50°F.

BILL OF MATERIAL

| Item | Unit | Total |
|--|-------|-------|
| Elastomeric Bearing Assembly, Type II | Each | 14 |
| Jack and Remove Existing Bearings | Each | 14 |
| Furnishing and Erecting Structural Steel | Pound | 1970 |
| Anchor Bolts 1" diameter | Each | 28 |

| | |
|------------|---------|
| DESIGNED - | ATH |
| CHECKED - | CCC |
| DRAWN - | STEFFEN |
| CHECKED - | ATH CCC |

PASSED

Jaime F. Joffe
ENGINEER OF BRIDGES AND STRUCTURES

DATE - JANUARY 13, 2023

| | |
|-----------|--|
| REVISED - | |
| REVISED - | |

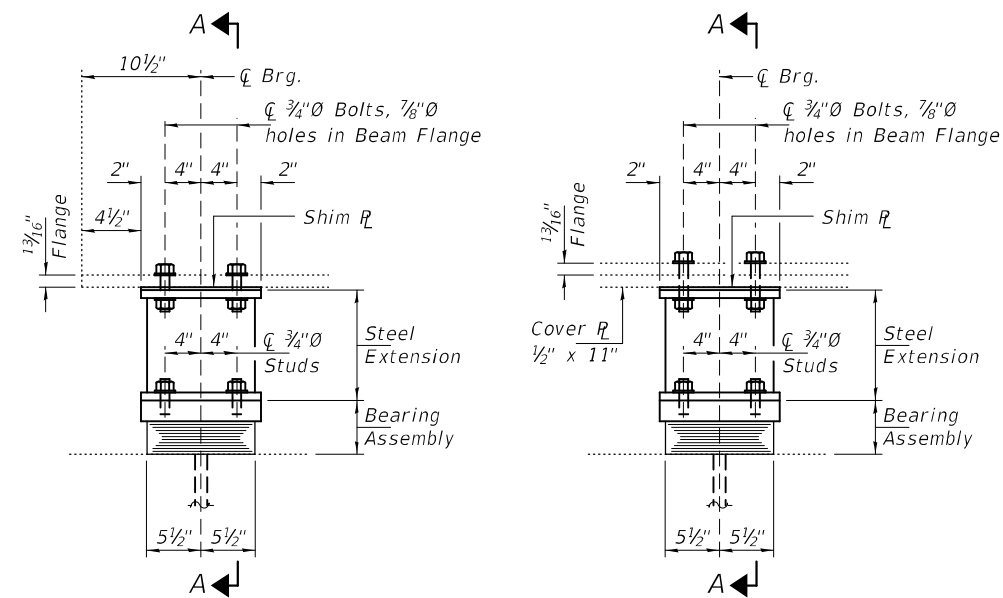
STATE OF ILLINOIS
DEPARTMENT OF TRANSPORTATION

ELASTOMERIC EXPANSION BEARING DETAILS - W. ABUT
SN 058-0084 (E.B.) & -0085 (W.B.)

SHEET NO. 2 OF 6 SHEETS

| | | | | |
|-------------|--------------------------|--------|------------------|-----------|
| F.A.I. RTE. | SECTION | COUNTY | TOTAL SHEETS | SHEET NO. |
| 72 | D7 BRIDGE REPAIRS 2023-7 | MACON | 9 | 5 |
| ILLINOIS | | | FED. AID PROJECT | |

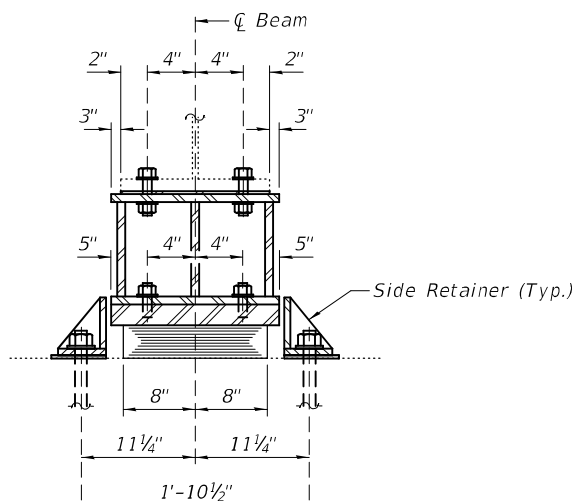
CONTRACT NO. 74B16



BEAM 2 - SN 058-0085 (W.B.)

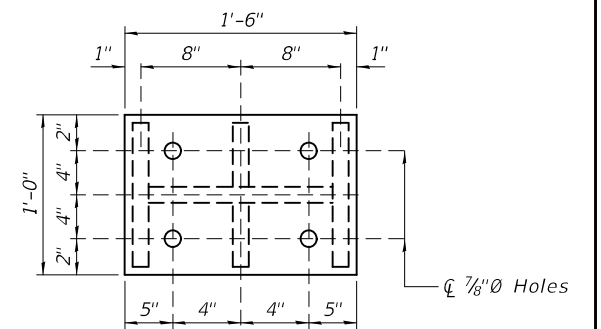
BEAMS 1 THRU 6 & 8 - SN 058-0084 (E.B.)
BEAMS 1 & 3 THRU 8 - SN 058-0085 (W.B.)

ELEVATION AT PIER 1
TYPE I ELASTOMERIC EXP. BRG.

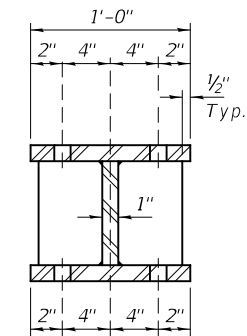


SECTION A-A

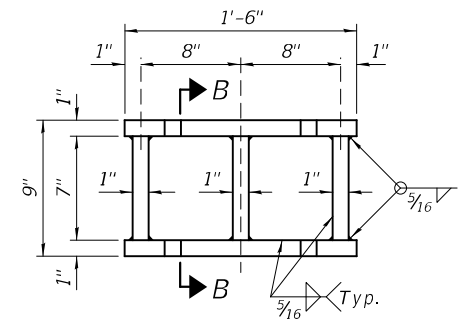
1" x 12" Anchor Bolts with 2 1/4" x 2 1/4" x 5/16" R washer under nut.



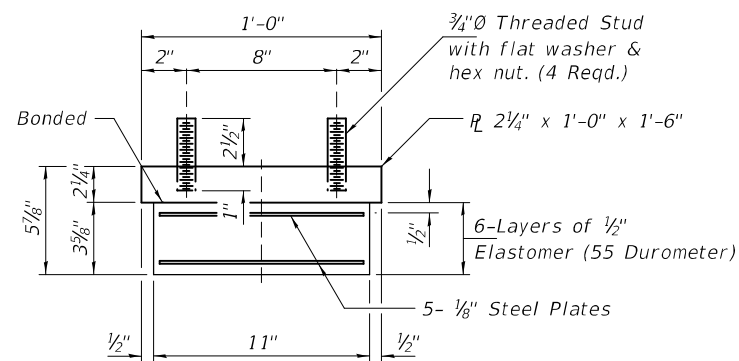
PLAN TOP AND BOTTOM PLATE



SECTION B-B

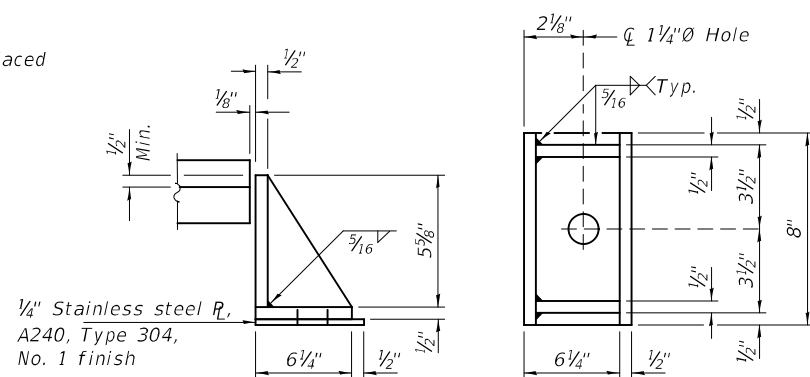


STEEL EXTENSION DETAIL



BEARING ASSEMBLY

Note:
Shim plates shall not be placed under Bearing Assembly.



SIDE RETAINER

(30-Required)
Equivalent rolled angle with stiffeners will be allowed in lieu of welded plates.

BEAM REACTIONS

| | | |
|----------------|-----|--------|
| R _∅ | (K) | 79.25 |
| R _∫ | (K) | 44.7 |
| Imp. | (K) | 10.94 |
| R (Total) | (K) | 134.89 |

Notes:

Diaphragm removal and reinstallation may be required to facilitate drilling holes. Cost included with Furnishing and Erecting Structural Steel.

New steel extensions, shim plates and connection bolts are included with Furnishing and Erecting Structural Steel.

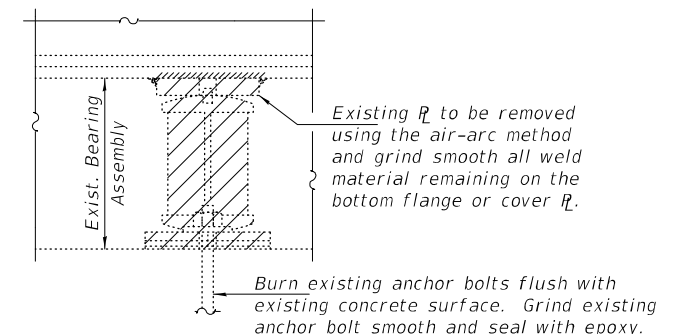
Prior to ordering any material, the Contractor shall verify in the field all bearing height and shim thickness dimensions. Adjustment must account for deck heave due to pack rust (if present).

Min. jack capacity = 105 Tons.

Anchor bolts shall be ASTM F1554 all-thread (or an Engineer-approved alternate material) of the grade(s) and diameter(s) specified. ASTM A307 Grade C anchor bolts may be used in lieu of ASTM F1554 Grade 36 (F_y=36ksi). The corresponding specified grade of AASHTO M314 anchor bolts may be used in lieu of ASTM F1554.

Drilled and set anchor bolts shall be installed according to Article 521.06 of the Standard Specifications.

Cost of Side retainers and Stainless Steel plates shall be included in the cost of Elastomeric Bearing Assembly, Type I.



EXISTING BEARING REMOVAL DETAIL

Cost included with Jack and Remove Existing Bearings.

BILL OF MATERIAL

| Item | Unit | Total |
|--|-------|-------|
| Elastomeric Bearing Assembly, Type I | Each | 15 |
| Jack and Remove Existing Bearings | Each | 15 |
| Furnishing and Erecting Structural Steel | Pound | 3340 |
| Anchor Bolts, 1"Ø | Each | 30 |

DESIGNED - ATH
CHECKED - CCC
DRAWN - STEFFEN
CHECKED - ATH CCC

PASSED

Jaime F. Joffe
ENGINEER OF BRIDGES AND STRUCTURES

DATE - JANUARY 13, 2023

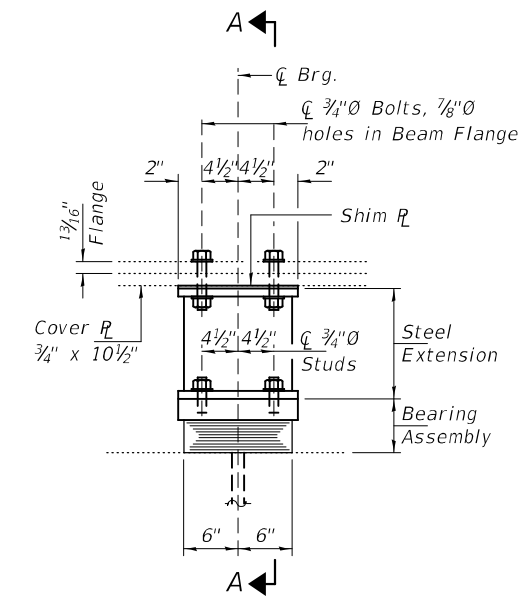
REVISED -
REVISED -

STATE OF ILLINOIS
DEPARTMENT OF TRANSPORTATION

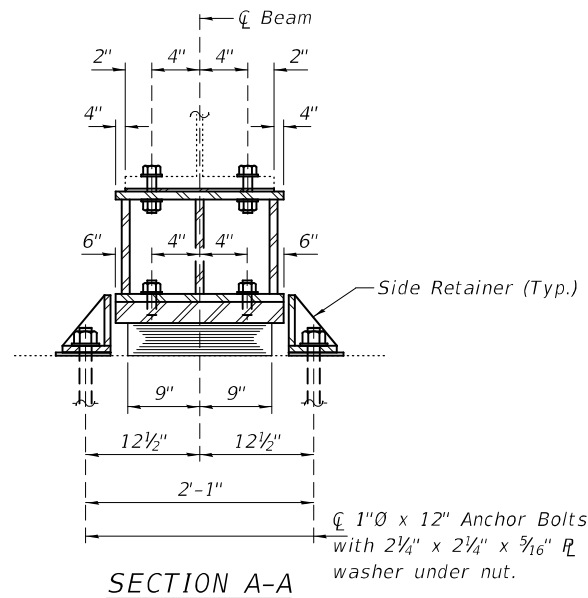
ELASTOMERIC EXPANSION BEARING DETAILS - PIER 1
SN 058-0084 (E.B.) & -0085 (W.B.)

SHEET NO. 3 OF 6 SHEETS

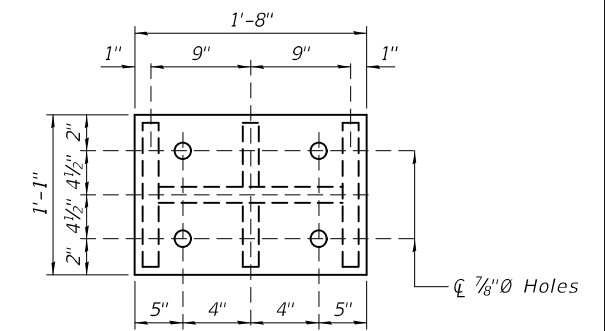
| | | | | |
|------------------|--------------------------|--------|--------------------|-----------|
| F.A.I. RTE. | SECTION | COUNTY | TOTAL SHEETS | SHEET NO. |
| 72 | D7 BRIDGE REPAIRS 2023-7 | MACON | 9 | 6 |
| ILLINOIS | | | CONTRACT NO. 74B16 | |
| FED. AID PROJECT | | | | |



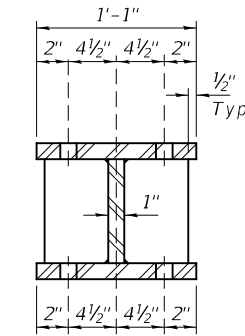
ELEVATION AT PIER 2
TYPE I ELASTOMERIC EXP. BRG.



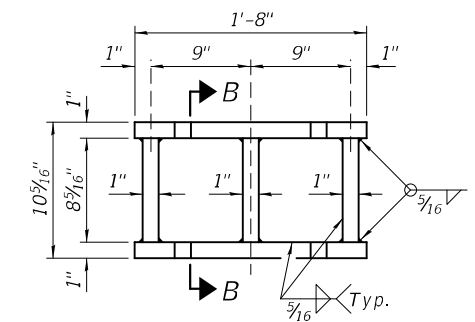
SECTION A-A



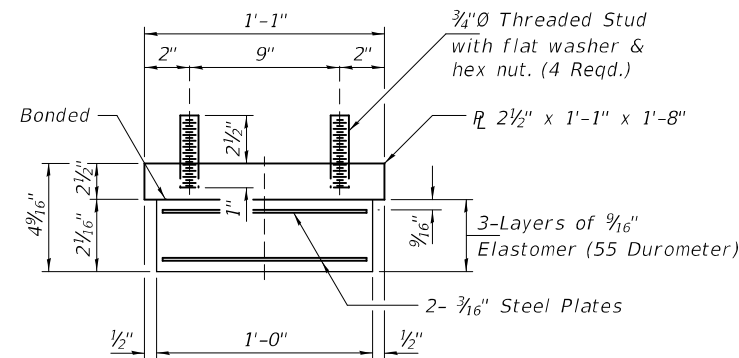
PLAN TOP AND BOTTOM PLATE



SECTION B-B

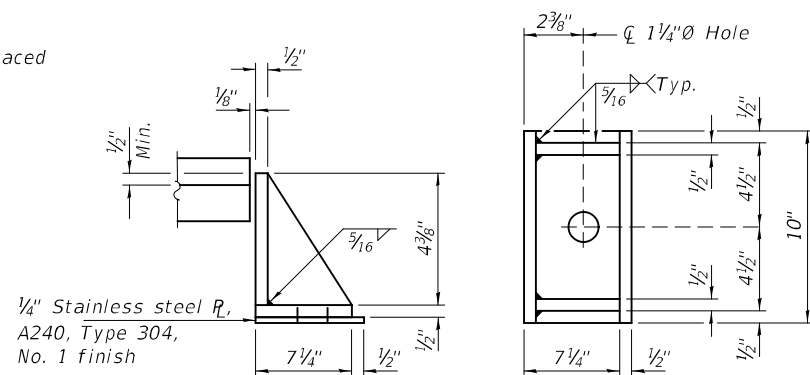


STEEL EXTENSION DETAIL



BEARING ASSEMBLY

Note:
Shim plates shall not be placed under Bearing Assembly.



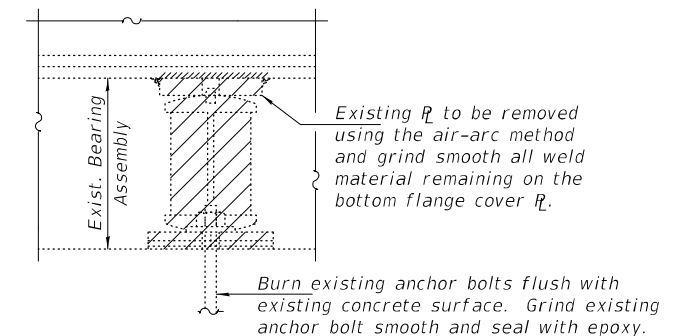
SIDE RETAINER

(30-Required)
Equivalent rolled angle with stiffeners will be allowed in lieu of welded plates.

BEAM REACTIONS

| | | |
|-------------|-----|--------|
| R_P | (K) | 94.0 |
| R_L | (K) | 47.2 |
| Imp. | (K) | 11.53 |
| R (Total) | (K) | 152.73 |

Notes:
Diaphragm removal and reinstallation may be required to facilitate drilling holes. Cost included with Furnishing and Erecting Structural Steel.
New steel extensions, shim plates and connection bolts are included with Furnishing and Erecting Structural Steel.
Prior to ordering any material, the Contractor shall verify in the field all bearing height and shim thickness dimensions. Adjustment must account for deck heave due to pack rust (if present).
Min. jack capacity = 115 Tons.
Anchor bolts shall be ASTM F1554 all-thread (or an Engineer-approved alternate material) of the grade(s) and diameter(s) specified. ASTM A307 Grade C anchor bolts may be used in lieu of ASTM F1554 Grade 36 ($F_y=36$ ksi). The corresponding specified grade of AASHTO M314 anchor bolts may be used in lieu of ASTM F1554.
Drilled and set anchor bolts shall be installed according to Article 521.06 of the Standard Specifications.
Cost of Side retainers and Stainless Steel plates shall be included in the cost of Elastomeric Bearing Assembly, Type I.



EXISTING BEARING REMOVAL DETAIL

Cost included with Jack and Remove Existing Bearings.

BILL OF MATERIAL

| Item | Unit | Total |
|--|-------|-------|
| Elastomeric Bearing Assembly, Type I | Each | 15 |
| Jack and Remove Existing Bearings | Each | 15 |
| Furnishing and Erecting Structural Steel | Pound | 4170 |
| Anchor Bolts, $1" \phi$ | Each | 30 |

DESIGNED - ATH
CHECKED - CCC
DRAWN - STEFFEN
CHECKED - ATH CCC

PASSED

Jaime F. Joffe
ENGINEER OF BRIDGES AND STRUCTURES

DATE - JANUARY 13, 2023

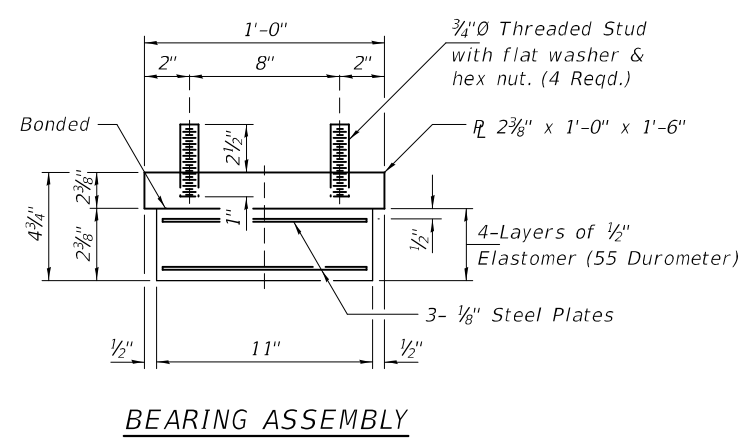
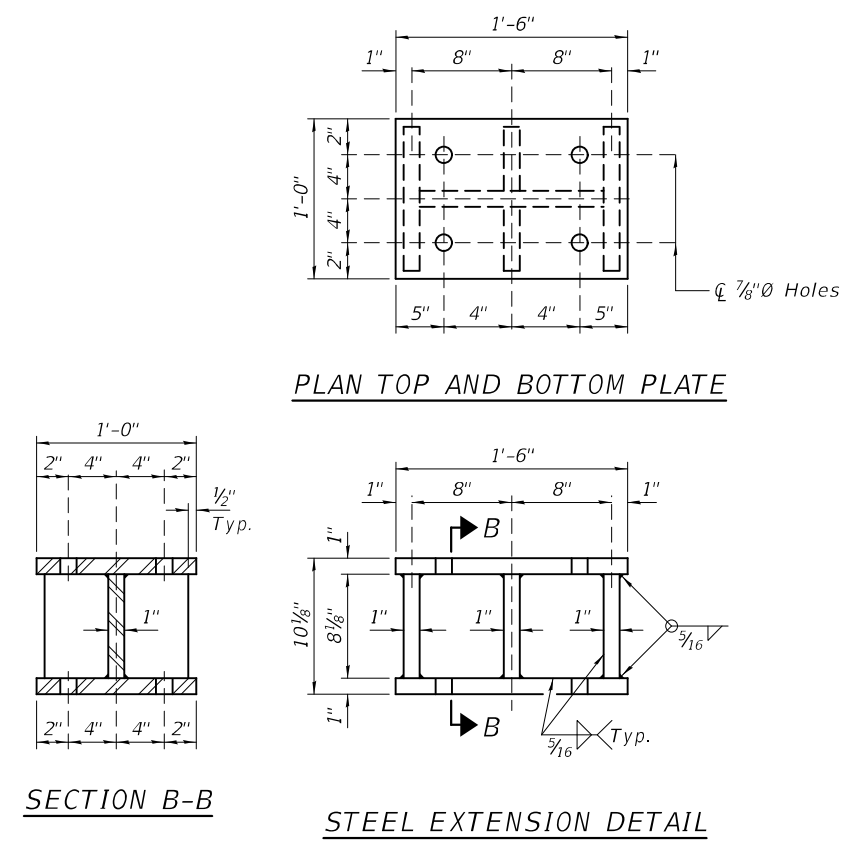
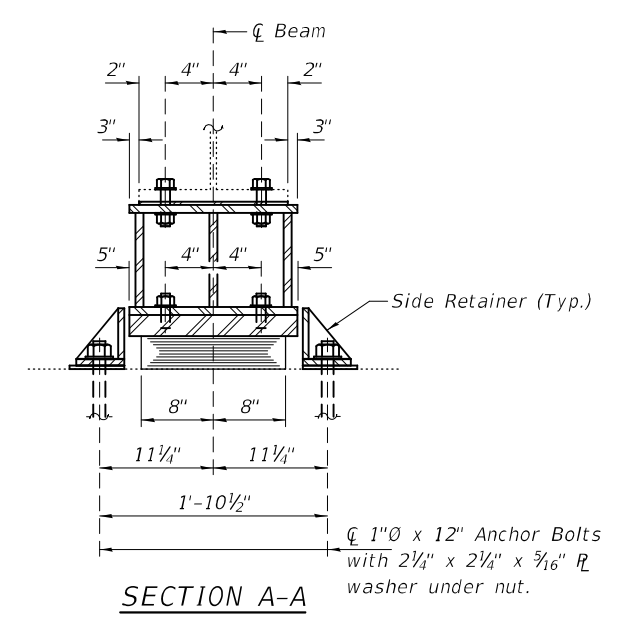
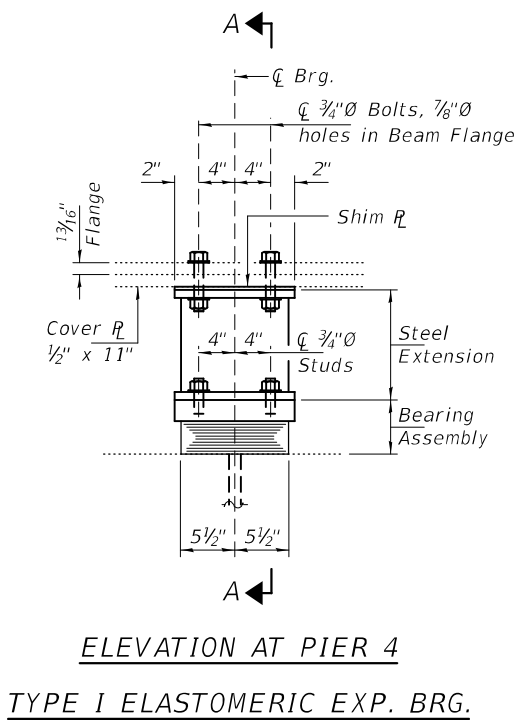
REVISED -
REVISED -

STATE OF ILLINOIS
DEPARTMENT OF TRANSPORTATION

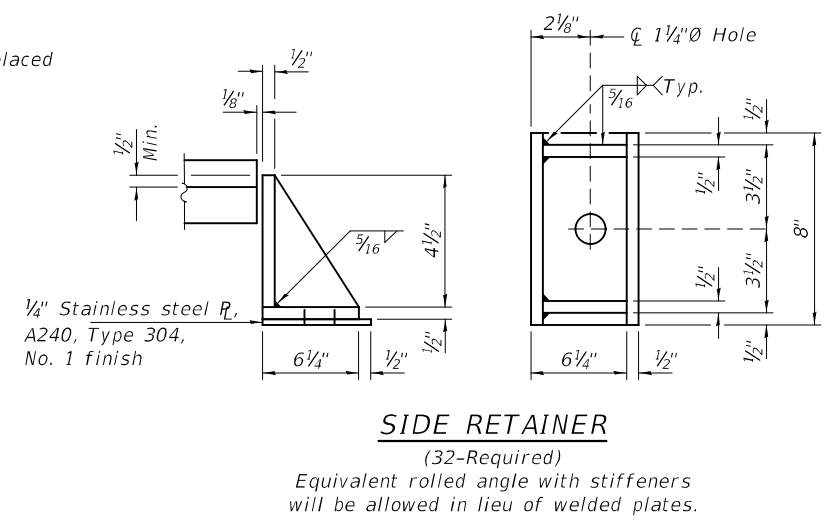
ELASTOMERIC EXPANSION BEARING DETAILS - PIER 2
SN 058-0084 (E.B.) & -0085 (W.B.)

SHEET NO. 4 OF 6 SHEETS

| | | | | |
|------------------|--------------------------|--------|--------------------|-----------|
| F.A.I. RTE. | SECTION | COUNTY | TOTAL SHEETS | SHEET NO. |
| 72 | D7 BRIDGE REPAIRS 2023-7 | MACON | 9 | 7 |
| ILLINOIS | | | CONTRACT NO. 74B16 | |
| FED. AID PROJECT | | | | |



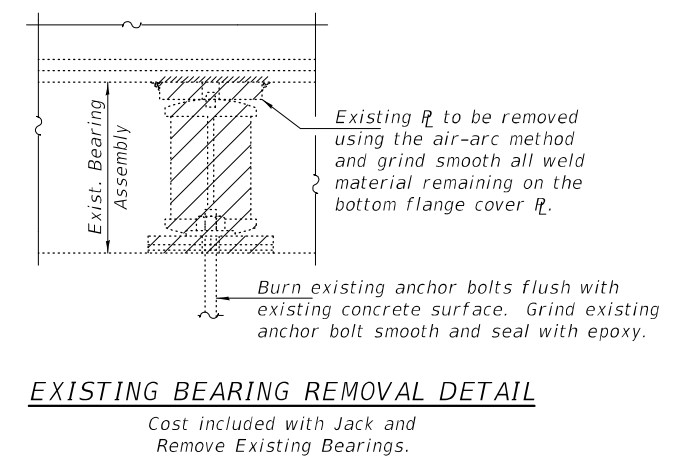
Note:
Shim plates shall not be placed under Bearing Assembly.



BEAM REACTIONS

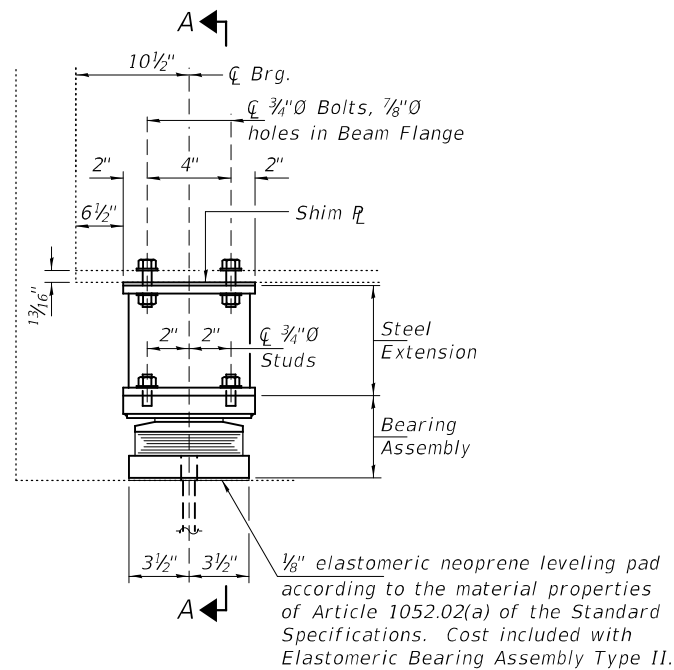
| | | |
|----------------|-----|--------|
| R _v | (K) | 83.2 |
| R _h | (K) | 46.1 |
| Imp. | (K) | 12.18 |
| R (Total) | (K) | 141.48 |

Notes:
Diaphragm removal and reinstallation may be required to facilitate drilling holes. Cost included with Furnishing and Erecting Structural Steel.
New steel extensions, shim plates and connection bolts are included with Furnishing and Erecting Structural Steel.
Prior to ordering any material, the Contractor shall verify in the field all bearing height and shim thickness dimensions. Adjustment must account for deck heave due to pack rust (if present).
Min. jack capacity = 110 Tons.
Anchor bolts shall be ASTM F1554 all-thread (or an Engineer-approved alternate material) of the grade(s) and diameter(s) specified. ASTM A307 Grade C anchor bolts may be used in lieu of ASTM F1554 Grade 36 (F_y=36ksi). The corresponding specified grade of AASHTO M314 anchor bolts may be used in lieu of ASTM F1554.
Drilled and set anchor bolts shall be installed according to Article 521.06 of the Standard Specifications.
Cost of Side retainers and Stainless Steel plates shall be included in the cost of Elastomeric Bearing Assembly, Type I.



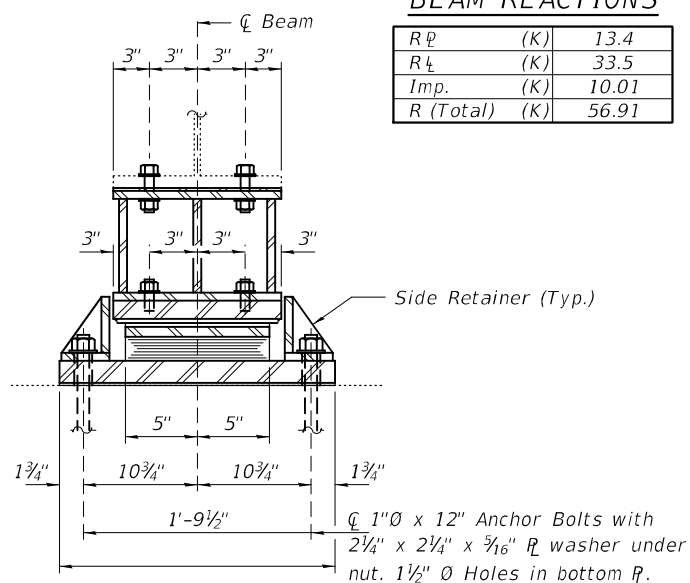
BILL OF MATERIAL

| Item | Unit | Total |
|--|-------|-------|
| Elastomeric Bearing Assembly, Type I | Each | 16 |
| Jack and Remove Existing Bearings | Each | 16 |
| Furnishing and Erecting Structural Steel | Pound | 3810 |
| Anchor Bolts, 1"0 | Each | 32 |



ELEVATION AT E. ABUT.

TYPE II TFE ELASTOMERIC EXP. BRG.

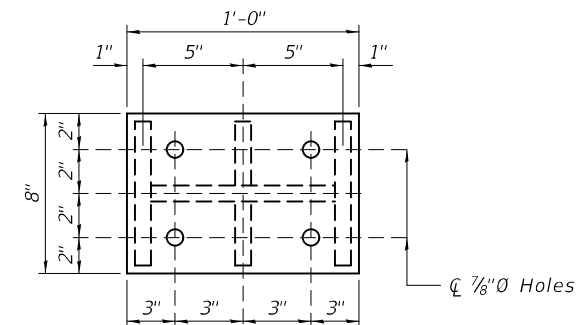


SECTION A-A

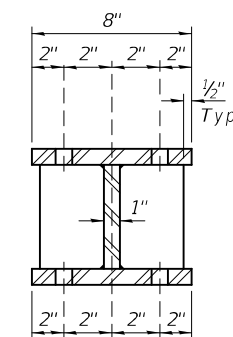
BEAM REACTIONS

| | | |
|----------------|-----|-------|
| R _D | (K) | 13.4 |
| R _L | (K) | 33.5 |
| Imp. | (K) | 10.01 |
| R (Total) | (K) | 56.91 |

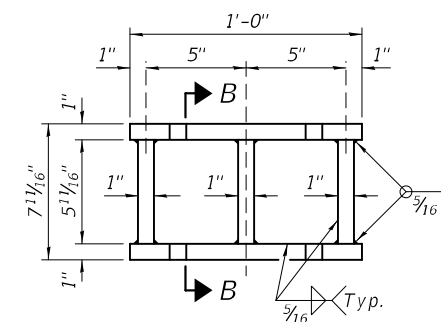
Notes:
 Diaphragm removal and reinstallation may be required to facilitate drilling holes. Cost included with Furnishing and Erecting Structural Steel.
 New steel extensions, shim plates and connection bolts are included with Furnishing and Erecting Structural Steel.
 Prior to ordering any material, the Contractor shall verify in the field all bearing height and shim thickness dimensions. Adjustment must account for deck heave due to pack rust (if present).
 Min. jack capacity = 45 Tons.
 Anchor bolts shall be ASTM F1554 all-thread (or an Engineer-approved alternate material) of the grade(s) and diameter(s) specified. ASTM A307 Grade C anchor bolts may be used in lieu of ASTM F1554 Grade 36 (F_y=36ksi). The corresponding specified grade of AASHTO M314 anchor bolts may be used in lieu of ASTM F1554.
 Anchor bolts for Type II bearings shall be placed in holes drilled through the bottom bearing plate after members are in place. Side retainers shall be placed after bolts are installed.
 Drilled and set anchor bolts shall be installed according to Article 521.06 of the Standard Specifications.
 Side retainers shall be included in the cost of Elastomeric Bearing Assembly, Type II.
 The 1/8" PTFE sheet shall be bonded directly to the top steel plate with a two-component, medium viscosity epoxy resin, conforming to the requirements of the Federal Specification MMM-A-134, Type I. The bond agent shall be applied on the full area of the contact surfaces.
 Bonding of 1/8" PTFE sheet during vulcanizing process will be permitted provided the process and method of adjusting assembly height is approved by the Engineer.



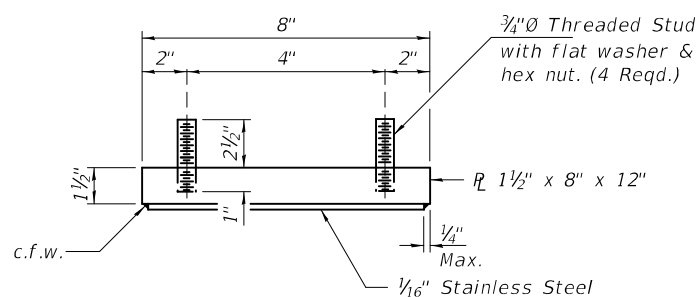
PLAN TOP AND BOTTOM PLATE



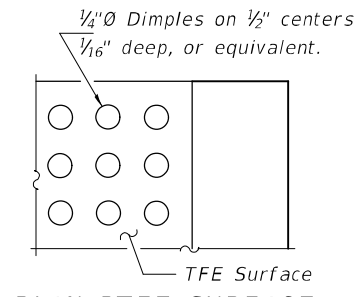
SECTION B-B



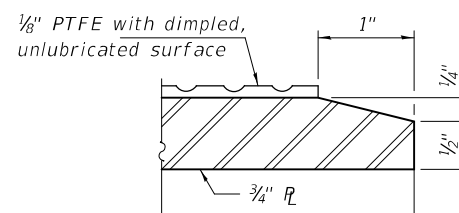
STEEL EXTENSION DETAIL



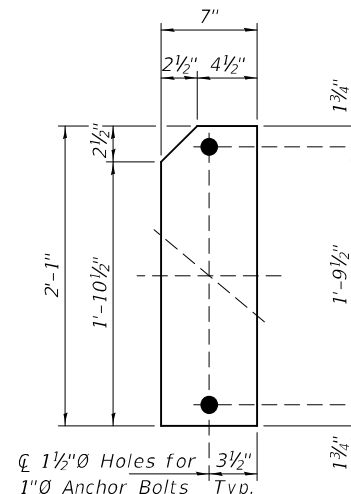
TOP BEARING ASSEMBLY



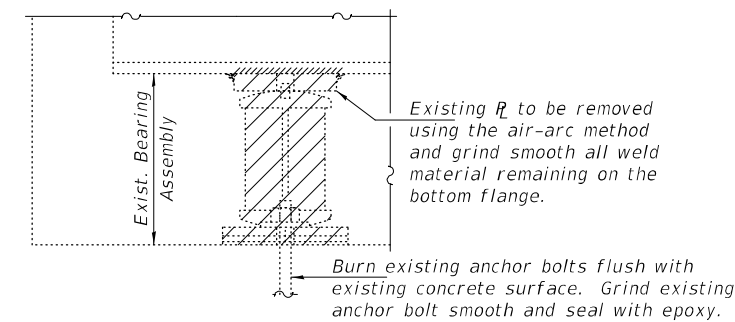
PLAN-PTFE SURFACE



SECTION THRU PTFE

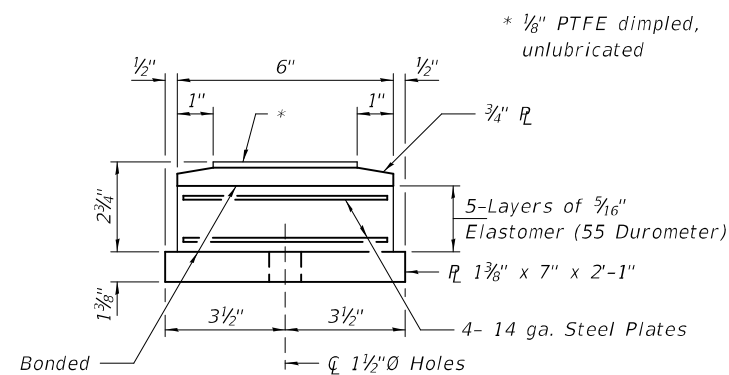


BOTTOM PLATE DETAIL

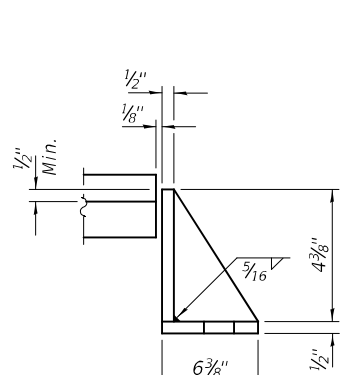


EXISTING BEARING REMOVAL DETAIL

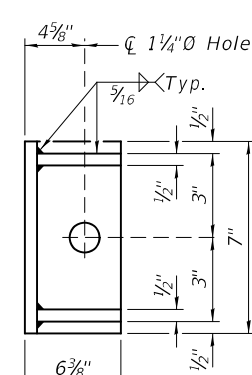
Cost included with Jack and Remove Existing Bearings.



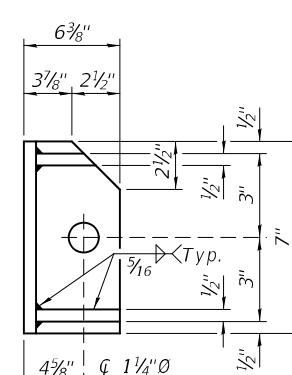
BOTTOM BEARING ASSEMBLY



TYPICAL SECTION



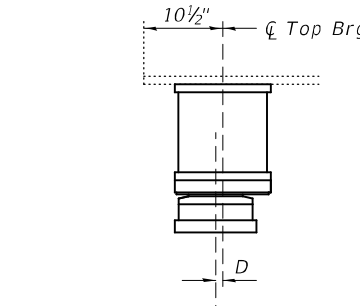
SIDE RETAINER TYPE "C" (16-Required)



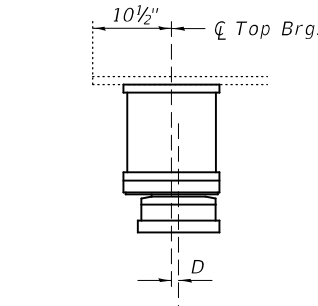
SIDE RETAINER TYPE "D" (16-Required)

SIDE RETAINER DETAILS

Equivalent rolled angle with stiffeners will be allowed in lieu of welded plates.



BELOW 50° F. (Move bott. brg. away from fixed brg.)



ABOVE 50° F. (Move bott. brg. toward fixed brg.)

SETTING ANCHOR BOLTS AT EXP. BRG.

D = 1/8" per each 100' of expansion for every 15° temp. change from the normal temp. of 50°F.

BILL OF MATERIAL

| Item | Unit | Total |
|--|-------|-------|
| Elastomeric Bearing Assembly, Type II | Each | 16 |
| Jack and Remove Existing Bearings | Each | 16 |
| Furnishing and Erecting Structural Steel | Pound | 1700 |
| Anchor Bolts 1"Ø | Each | 32 |

| |
|-------------------|
| DESIGNED - ATH |
| CHECKED - CCC |
| DRAWN - STEFFEN |
| CHECKED - ATH CCC |

PASSED

Jaime F. Joffe
 ENGINEER OF BRIDGES AND STRUCTURES

DATE - JANUARY 13, 2023

| |
|-----------|
| REVISED - |
| REVISED - |

STATE OF ILLINOIS
 DEPARTMENT OF TRANSPORTATION

ELASTOMERIC EXPANSION BEARING DETAILS - E. ABUT.
 SN 058-0084 (E.B.) & -0085 (W.B.)

SHEET NO. 6 OF 6 SHEETS

| | | | | |
|-------------|--------------------------|--------|------------------|-----------|
| F.A.I. RTE. | SECTION | COUNTY | TOTAL SHEETS | SHEET NO. |
| 72 | D7 BRIDGE REPAIRS 2023-7 | MACON | 9 | 9 |
| ILLINOIS | | | FED. AID PROJECT | |