

03-10-2023 LETTING ITEM 076

STATE OF ILLINOIS  
DEPARTMENT OF TRANSPORTATION

VAR. RTE.	SECTION	COUNTY	TOTAL SHEETS	SHEET NO.
	IL 7 22 BP	COOK	27	1
		ILLINOIS	CONTRACT NO. 62U14	

\* 27 + 1 = 28 TOTAL SHEETS

FOR INDEX OF SHEETS, SEE SHEET NO. 2

# PROPOSED HIGHWAY PLANS

## F.A.U. 3578 (IL 7) & F.A.P. 344 (127th Street) VARIOUS BRIDGES IN DISTRICT ONE SECTION: IL 7 22 BP BRIDGE PAINTING COOK COUNTY

### TRAFFIC DATA

2021 ADT  
127TH STREET = 25700  
ILLINOIS ROUTE 7 = 16300

### POSTED SPEED LIMIT

127TH STREET = 40 MPH  
ILLINOIS ROUTE 7 = 40 MPH

IMPROVEMENT LOCATION 1:  
127TH STREET  
0.2 MILES WEST OF HOMAN AVE.  
STRUCTURE NO.: 016-2511  
CITY OF BLUE ISLAND

IMPROVEMENT LOCATION 2:  
IL-7 SOUTHWEST HIGHWAY  
86TH AVE. OVER IL-7 SOUTHWEST HIGHWAY  
STRUCTURE NO.: 016-2635  
VILLAGE OF PALOS PARK

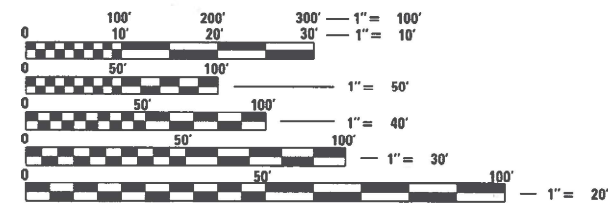
C-91-015-23

R 12 & 13 E

T 37 N



PALOS & WORTH TOWNSHIP



FULL SIZE PLANS HAVE BEEN PREPARED USING STANDARD ENGINEERING SCALES. REDUCED SIZED PLANS WILL NOT CONFORM TO STANDARD SCALES. IN MAKING MEASUREMENTS ON REDUCED PLANS, THE ABOVE SCALES MAY BE USED.

J.U.L.I.E.  
JOINT UTILITY LOCATION INFORMATION FOR EXCAVATORS  
1-800-892-0123  
OR 811

PROJECT ENGINEER: RODRIGO LEDEZMA (847)705-4580  
PROJECT MANAGER: JEAN ALAIN MIDY (847)221-3056

CONTRACT NO. 62U14

D-91-009-23



LOCATION OF SECTION INDICATED THIS: - -

STATE OF ILLINOIS  
DEPARTMENT OF TRANSPORTATION

SUBMITTED DECEMBER 8 20 22  
Jose Rios  
REGIONAL ENGINEER  
February 3, 2023  
S.A. Etk  
ENGINEER OF DESIGN AND ENVIRONMENT  
February 3, 2023  
Stephen M. Smith  
DIRECTOR OF HIGHWAYS PROJECT IMPLEMENTATION

PRINTED BY THE AUTHORITY  
OF THE STATE OF ILLINOIS

## INDEX OF SHEETS

1	COVER SHEET
2	INDEX OF SHEETS, STATE STANDARDS AND GENERAL NOTES
3	SUMMARY OF QUANTITIES
4-6	LOCATION 1: EXISTING BRIDGE PLANS (SN 016-2511)
7-10	LOCATION 2: EXISTING BRIDGE PLANS (SN 016-2635)
11-12	STAGING TYPICAL SECTIONS
13-18	SUGGESTED STAGES OF CONSTRUCTION AND TRAFFIC CONTROL
19-21	PROPOSED PAVEMENT MARKING PLAN
22	ENTRANCE AND EXIT RAMP CLOSURE DETAILS (TC-08)
23	TRAFFIC CONTROL AND PROTECTION FOR SIDE ROADS, INTERSECTIONS, AND DRIVEWAYS (TC-10)
24	DISTRICT ONE TYPICAL PAVEMENT MARKINGS (TC-13)
25	TRAFFIC CONTROL AND PROTECTION AT TURN BAYS (TO REMAIN) OPEN TO TRAFFIC (TC-14)
26	SHORT TERM PAVEMENT MARKING LETTERS AND SYMBOLS (TC-16)
27	ARTERIAL ROAD INFORMATION SIGN (TC-22)

## STATE STANDARDS

STANDARD NO.	DESCRIPTION
701006-05	OFF- ROAD MOVING OPERATION 2L, 2W 15 <sup>5</sup> / <sub>32</sub> TO 24 <sup>9</sup> / <sub>32</sub> FROM PAVEMENT EDGE
701011-04	OFF-ROAD MOVING OPERATION 2L, 2W, DAY ONLY
701101-05	OFF ROAD OPERATIONS, MULTILANE, 2 <sup>7</sup> / <sub>32</sub> TO 15 <sup>5</sup> / <sub>32</sub> FROM PAVEMENT EDGE
701301-04	LANE CLOSURE, 2L, 2W, SHORT TIME OPERATIONS
701311-03	LANE CLOSURE 2L, 2W MOVING OPERATIONS- DAY ONLY
701427-05	LANE CLOSURE, MULTILANE, INTERMITTENT OR MOVING OPERATIONS FOR SPEEDS < 40 MPH
701501-06	URBAN LANE CLOSURE, 2L, 2W, UNDIVIDED
701701-10	URBAN LANE CLOSURE, MULTILANE INTERSECTION
701606-10	URBAN SINGLE LANE CLOSURE, MULTILANE, 2W WITH MOUNTABLE MEDIAN
701901-08	TRAFFIC CONTROL DEVICES

## GENERAL NOTES

- BEFORE STARTING ANY EXCAVATION, THE CONTRACTOR SHALL CALL "J.U.L.I.E." AT (800) 892-0123 OR 811 FOR FIELD LOCATIONS OF BURIED ELECTRIC, TELEPHONE AND GAS UTILITIES. 48 HOUR NOTIFICATION IS REQUIRED.
- THE CONTRACTOR SHALL COORDINATE CONSTRUCTION ACTIVITIES WITH UTILITY COMPANIES, CITY OF BLUE ISLAND AND VILLAGE OF PALOS PARK.
- PLAN DIMENSIONS AND DETAILS RELATIVE TO EXISTING PLANS ARE SUBJECT TO NOMINAL CONSTRUCTION VARIATIONS. THE CONTRACTOR SHALL FIELD VERIFY EXISTING DIMENSIONS AND DETAILS AFFECTING NEW CONSTRUCTION AND MAKE NECESSARY APPROVED ADJUSTMENTS PRIOR TO CONSTRUCTION OR ORDERING OF MATERIALS. SUCH VARIATIONS SHALL NOT BE CAUSE FOR ADDITIONAL COMPENSATION FOR A CHANGE IN SCOPE OF THE WORK, HOWEVER, THE CONTRACTOR WILL BE PAID FOR THE QUANTITY ACTUALLY FURNISHED BASED AT THE UNIT PRICE BID FOR THE WORK.
- THE CONTRACTOR WILL NOT BE ALLOWED TO SET UP A YARD OR FIELD OFFICE ON STATE PROPERTY WITHOUT WRITTEN PERMISSION FROM THE DEPARTMENT.
- THE CONTRACTOR SHALL CONTACT THE DISTRICT ONE TRAFFIC CONTROL SUPERVISOR AT KALPANA.KANNAN-HOSADURGA@ILLINOIS.GOV FOR ARTERIALS AND (847)705-4151 FOR EXPRESSWAYS A MINIMUM OF 72 HOURS IN ADVANCE OF BEGINNING WORK.
- THE ENGINEER SHALL CONTACT ERIC CAMPOS, AREA TRAFFIC FIELD ENGINEER, AT (815) 485-6475 A MINIMUM OF TWO (2) WEEKS PRIOR TO THE PLACEMENT OF PERMANENT PAVEMENT MARKINGS.
- IT SHALL BE THE CONTRACTOR'S RESPONSIBILITY TO PROTECT AND MAINTAIN THE EXISTING BRIDGE LIGHTING AT ANY LOCATIONS THAT LIGHTING IS ENCOUNTERED ADJACENT TO AN AREA TO BE CLEANED AND PAINTED.
- THE CONTRACTOR SHALL BE REQUIRED TO PROVIDE ACCESS TO ABUTTING PROPERTY AT ALL TIMES DURING THE CONSTRUCTION OF THIS PROJECT.
- WHEN ARTIFICIAL LIGHTING IS UTILIZED IN NIGHTTIME OPERATIONS, THE CONTRACTOR SHALL EXERCISE THE OUTMOST PRECAUTIONS PREVENTING ADVERSE VISIBILITY TO THE MOTORING PUBLIC AND ADJACENT RESIDENTIAL AREAS.
- THE CONTRACTOR SHALL TAKE NECESSARY PRECAUTIONS WHEN WORKING NEAR THE ABUTMENTS IF ELECTRICAL JUNCTIONS BOXES AND ATTACHED CONDUITS ARE PRESENT.
- DO NOT SCALE PLANS FOR CONSTRUCTION DIMENSIONS.

## GENERAL PAINT NOTES

- CLEANING AND PAINTING OF THE EXISTING STRUCTURAL STEEL SHALL BE AS SPECIFIED IN THE SPECIAL PROVISION FOR "CLEANING AND PAINTING EXISTING STEEL STRUCTURES".
- ALL ITEMS (SUCH AS, BUT NOT LIMITED TO: CONDUITS, BRACKETS AND DECK DRAINS) ATTACHED TO OUTSIDE OF THE FASCIA BEAMS SHOULD BE CLEANED AND PAINTED.
- FOR ALL STRUCTURES: ALL BEAMS, BEARINGS, AND OTHER STRUCTURAL STEEL SHALL BE CLEANED PER NEAR WHITE BLAST CLEANING SSPC-SP-10.
- THESE AREAS SHALL BE PAINTED ACCORDING TO THE REQUIREMENTS OF PAINT SYSTEM 1 -OZ/E/U. THE COLOR OF THE FINAL FINISH COAT FOR ALL INTERIOR STEEL SURFACES SHALL BE GRAY, MUNSELL NO 5B 7/1. THE COLOR OF THE FINAL FINISH COAT FOR THE EXTERIOR AND BOTTOM FLANGE OF THE FASCIA BEAMS SHALL BE REDDISH BROWN, MUNSELL NO 2. 5YR 3/4.
- A MINIMUM OF 1 AIR MONITORS AT SN 016-2511 AND 2 AIR MONITORS AT SN 016-2635 WILL BE REQUIRED TO MONITOR ABRASIVE BLASTING OPERATIONS. SEE SPECIAL PROVISIONS FOR "CONTAINMENT AND DISPOSAL OF LEAD PAINT CLEANING RESIDUE".

## GENERAL RAILROAD NOTES

- REFER TO THE CSX TRANSPORTATION PUBLIC PROJECT INFORMATION MANUAL FOR ADDITIONAL REQUIREMENTS NEEDED FOR WORKING ON/ABOVE/ADJACENT TO CSXT. SPECIFIC SECTIONS THAT PERTAIN TO THIS PROJECT ARE: SPECIAL PROVISIONS FOR CONSTRUCTION NEAR CSXT PROPERTY, OVERHEAD/UNDERPASS BRIDGE CRITERIA, CONSTRUCTION SUBMISSION CRITERIA, SOIL AND WATER MANAGEMENT POLICY, AND INSURANCE REQUIREMENTS FOR PUBLIC PROJECTS.
- CONTRACTOR ACCESS WILL BE LIMITED TO THE IMMEDIATE PROJECT AREA ONLY. THE CSXT RIGHT-OF-WAY OUTSIDE THE PROJECT AREA MAY NOT BE USED FOR CONTRACTOR ACCESS TO THE PROJECT SITE AND NO TEMPORARY AT-GRADE CROSSINGS WILL BE ALLOWED.
- THE CONTRACTOR MAY NOT USE CSXT RIGHT-OF-WAY FOR STORAGE OF MATERIALS OR EQUIPMENT DURING CONSTRUCTION WITHOUT PRIOR CSXT APPROVAL. THE CSXT RIGHT-OF-WAY MUST REMAIN CLEAR FOR RAILROAD USE AT ALL TIMES. EQUIPMENT MAY NOT BE POSITIONED TO BLOCK THE RAILROAD ACCESS ROAD, TRACK AREA OR ANY PART OF THE CSXT RIGHT-OF-WAY WITHOUT PRIOR CSXT APPROVAL.
- THE CONTRACTOR WILL BE REQUIRED TO ABIDE BY THE PROVISIONS OF THE AGENCY/CSXT CONSTRUCTION AGREEMENT. PERIODICALLY, THROUGHOUT THE PROJECT DURATION, THE CONTRACTOR WILL BE REQUIRED TO MEET, DISCUSS AND, IF NECESSARY, TAKE IMMEDIATE ACTION AT THE DISCRETION OF CSXT PERSONNEL AND/OR THEIR AUTHORIZED REPRESENTATIVE, TO COMPLY WITH PROVISIONS OF THAT AGREEMENT AND THESE SPECIFICATIONS.
- ALL WASTE MATERIALS GENERATED BY THIS PROJECT, INCLUDING BUT NOT LIMITED TO WASHING WITH WATER, CLEANING SOLVENTS, BLASTING, SCRAPING, BRUSHING AND PAINTING OPERATIONS, SHALL BE THE RESPONSIBILITY OF THE PROJECT SPONSOR OR ITS CONTRACTOR AND SHALL BE CONTAINED, COLLECTED AND PROPERLY DISPOSED OF BY THE PROJECT SPONSOR OR ITS CONTRACTOR. THE PROJECT SPONSOR AND ITS CONTRACTOR AGREE TO FULLY COMPLY WITH ALL FEDERAL, STATE, AND LOCAL ENVIRONMENTAL LAWS, REGULATIONS, STATUTES AND ORDINANCES AT ALL TIMES.
- IF USING SCAFFOLDING OR SAFETY CABLES/HARNESSES SUPPORTING CALCULATIONS FOR THEIR DESIGN MUST BE PROVIDED FOR CSXT REVIEW & COMMENT/APPROVAL. PLANS MUST BE STAMPED AND SEALED BY A LICENSED PROFESSIONAL ENGINEER IN THE STATE OF ILLINOIS. PROVIDE SPEC SHEETS FOR SCAFFOLDING, HARNESSES, SAFETY CABLES, ETC., TO BE USED.
- CSXT SHALL BE NOTIFIED AT LEAST 5 DAYS IN ADVANCE OF THE PRE-CONSTRUCTION MEETING.
- UPON COMPLETION OF THE WORK ON CSXT PROPERTY, THE CONTRACTOR SHALL REQUEST THE OWNER TO ARRANGE A FINAL INSPECTION OF THE PROJECT WITH THE RAILROAD S PROJECT ENGINEER OR HIS AUTHORIZED REPRESENTATIVE.
- CSXT HAS SOLE AUTHORITY TO DETERMINE THE NEED FOR TRACK PROTECTION REQUIRED TO PROTECT ITS OPERATIONS AND PROPERTY. IN GENERAL, TRACK PROTECTION WILL BE REQUIRED WHENEVER CONTRACTOR OR EQUIPMENT ARE, OR ARE LIKELY TO BE, WORKING WITHIN FIFTY FEET OF TRACK OR OTHER TRACK CLEARANCES AS SPECIFIED BY CSX.

MODEL: Default  
 FILE: Mainfile.plt  
 PROJECT: C:\Users\paw.bentley.com\Public\paw.bentley.com\Public\Documents\DOT Office\District: I\Project\ID:00923\CADD\DATA\Design\ID:00923-sub\generalnote.dgn

USER NAME = Omar.Abood@ndia	DESIGNED -	REVISED -
	DRAWN -	REVISED -
PLOT SCALE = 100,0000 ' / in.	CHECKED -	REVISED -
PLOT DATE = 12/19/2022	DATE -	REVISED -

**STATE OF ILLINOIS**  
**DEPARTMENT OF TRANSPORTATION**

**INDEX OF SHEETS, STATE STANDARDS,**  
**GENERAL NOTES & GENERAL PAINTING NOTES**

SCALE: SHEET OF SHEETS STA. TO STA.

V.A.R. RTE.	SECTION	COUNTY	TOTAL SHEETS	SHEET NO.
V.A.R.	IL 7 22 BP	COOK	27	2
CONTRACT NO. 62U14				
		ILLINOIS	FED. AID PROJECT	

SUMMARY OF QUANTITIES			URBAN TOTAL QUANTITIES 100% STATE	CONSTRUCTION TYPE CODE				
CODE NO	ITEM	UNIT		0047 BRIDGE 1 SN 016-2511	0047 BRIDGE 2 SN 016-2635			
67100100	MOBILIZATION	L SUM	1	0.5	0.5			
70102620	TRAFFIC CONTROL AND PROTECTION, STANDARD 701501	L SUM	1		1			
70106800	CHANGEABLE MESSAGE SIGN	CAL MO	8	4	4			
70300150	SHORT TERM PAVEMENT MARKING REMOVAL	SO FT	7500	7200	300			
70306120	TEMPORARY PAVEMENT MARKING - LINE 4" - TYPE III TAPE	FOOT	6400	5960	440			
70307120	TEMPORARY PAVEMENT MARKING - LINE 4" - TYPE IV TAPE	FOOT	15700	15260	440			
70400100	TEMPORARY CONCRETE BARRIER	FOOT	450		450			
70600260	IMPACT ATTENUATORS, TEMPORARY (FULLY REDIRECTIVE, NARROW), TEST LEVEL 3	EACH	2		2			
78000100	THERMOPLASTIC PAVEMENT MARKING - LETTERS AND SYMBOLS	SO FT	317	317				
78000200	THERMOPLASTIC PAVEMENT MARKING - LINE 4"	FOOT	13602	13162	440			
78000400	THERMOPLASTIC PAVEMENT MARKING - LINE 6"	FOOT	1170	1170				
78000600	THERMOPLASTIC PAVEMENT MARKING - LINE 12"	FOOT	345	345				

SUMMARY OF QUANTITIES			URBAN TOTAL QUANTITIES 100% STATE	CONSTRUCTION TYPE CODE				
CODE NO	ITEM	UNIT		0047 BRIDGE 1 SN 016-2511	0047 BRIDGE 2 SN 016-2635			
78000650	THERMOPLASTIC PAVEMENT MARKING - LINE 24"	FOOT	181	181				
78300202	PAVEMENT MARKING REMOVAL - WATER BLASTING	SO FT	8750	8600	150			
X5060602	CONTAINMENT AND DISPOSAL OF NON-LEAD PAINT CLEANING RESIDUES NO. 2	L SUM	1		1			
X6700407	ENGINEER'S FIELD OFFICE, TYPE A (D1)	CAL MO	12	6	6			
X7010216	TRAFFIC CONTROL AND PROTECTION, (SPECIAL)	L SUM	1	0.5	0.5			
Z0007101	CONTAINMENT AND DISPOSAL OF LEAD PAINT CLEANING RESIDUES NO. 1	L SUM	1	1				
Z0010501	CLEANING AND PAINTING STEEL BRIDGE NO. 1	L SUM	1	1				
Z0010502	CLEANING AND PAINTING STEEL BRIDGE NO. 2	L SUM	1		1			
Z0030850	TEMPORARY INFORMATION SIGNING	SO FT	102.8	51.4	51.4			
Z0048665	RAILROAD PROTECTIVE LIABILITY INSURANCE	L SUM	1	1				
Z0076604	TRAINEES - TRAINING PROGRAM GRADUATE	HOURS	500	500				

FILE NAME =	USER NAME = Omar.Abdin@ndia	DESIGNED -	REVISED -
pw\N\dot-pw\Bentley.com\PI\DOT\Documents\DOT - Office\District\Projects\100923\CAD\Drawn\Design\100923-str-500		DRAWN -	REVISED -
	PLLOT SCALE = 100,0000' / 1in	CHECKED -	REVISED -
	PLLOT DATE = 12/20/2022	DATE -	REVISED -

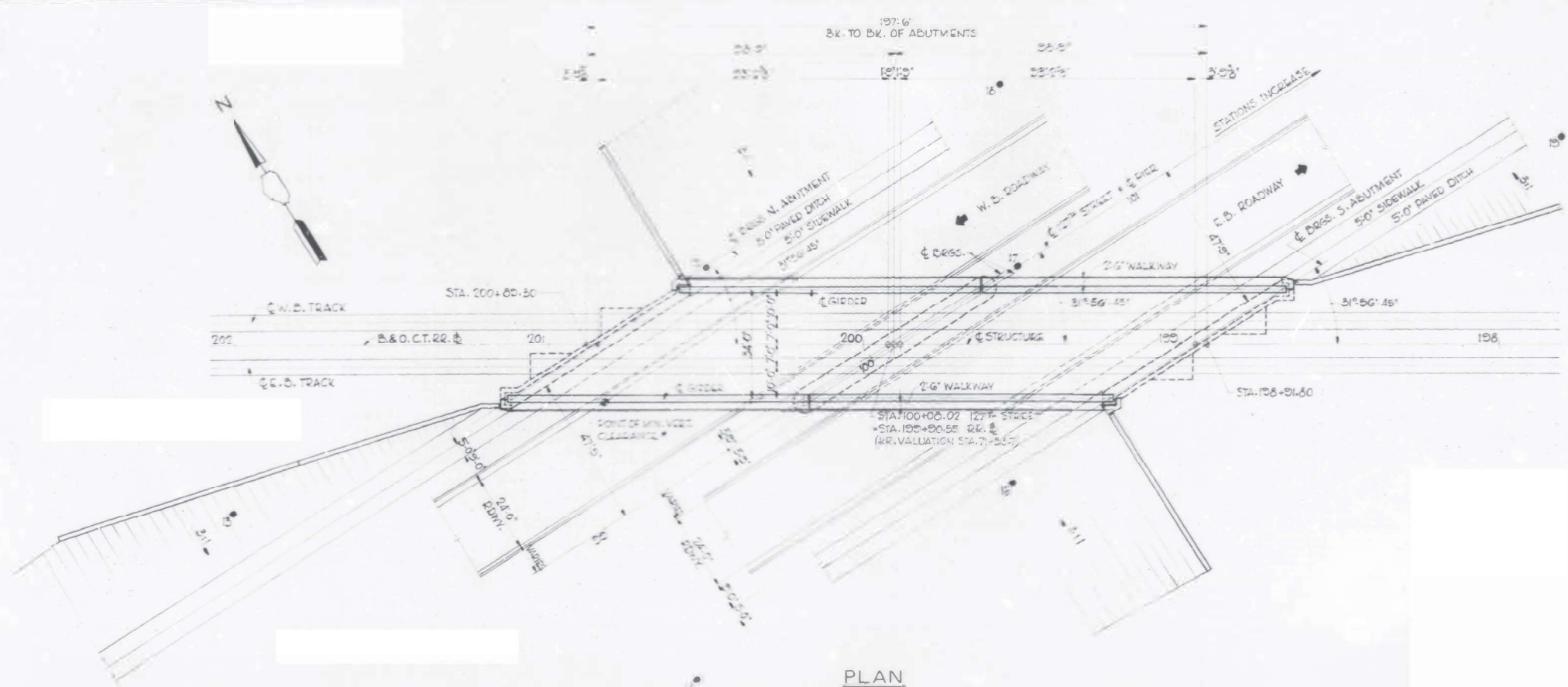
**STATE OF ILLINOIS  
DEPARTMENT OF TRANSPORTATION**

**ILLINOIS ROUTE 7  
SUMMARY OF QUANTITIES**

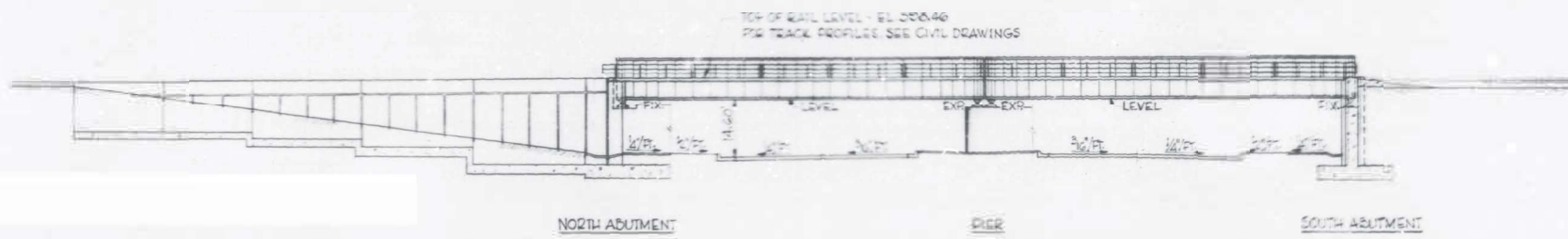
SCALE: SHEET NO. OF SHEETS STA. TO STA.

VAR. RTE.	SECTION	COUNTY	TOTAL SHEETS	SHEET NO.
VAR.	IL 7 22 BP	COOK	27	3
FED. ROAD DIST. NO. 1 ILLINOIS FED. AID PROJECT			CONTRACT NO. 62U14	

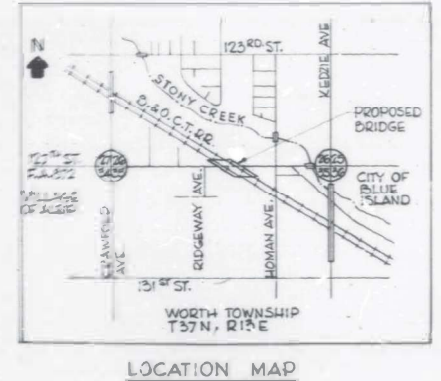
0042



PLAN



ELEVATION



LOCATION MAP

FOR INFORMATION ONLY

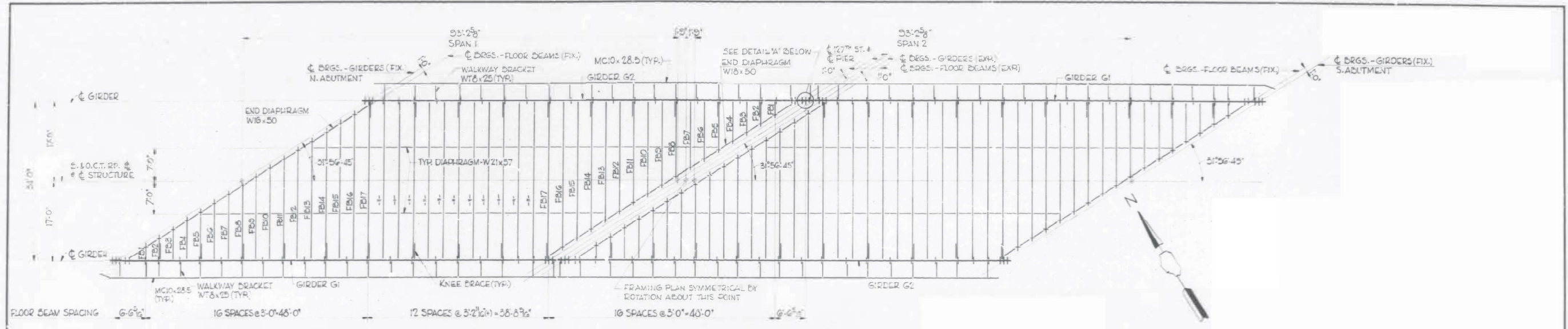
MODEL: Default FILE NAME: p:\wldoc\sw\entel\com\pwwd\Documents\DOT\_Offices\District\_1\Projects\100923\CADD\Drawings\100923-111-01a.dwg

USER/NAME = navedhassan	DESIGNED -	REVISED -
	DRAWN -	REVISED -
PLOT/SCALE = 1/8" = 1' / in.	CHECKED -	REVISED -
PLOT DATE = 8/3/2022	DATE -	REVISED -

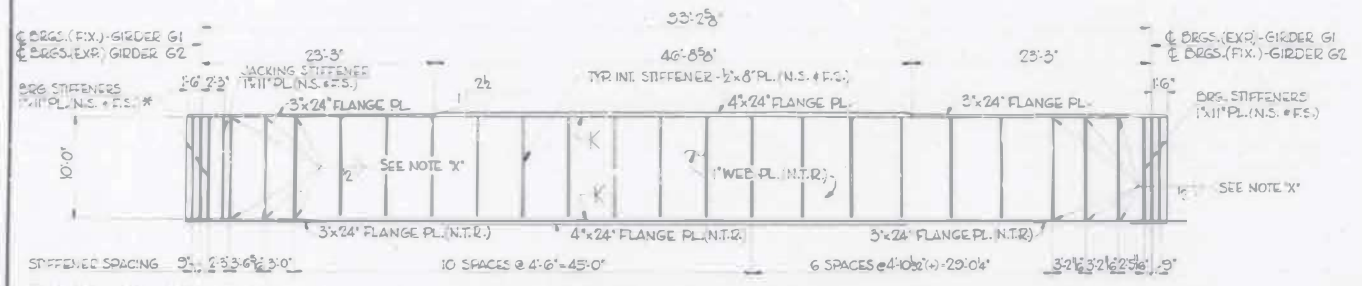
STATE OF ILLINOIS  
DEPARTMENT OF TRANSPORTATION

LOCATION 1: PLAN AND ELEVATION			
127TH STREET			
SCALE:	SHEET	OF SHEETS	STA. TO STA.

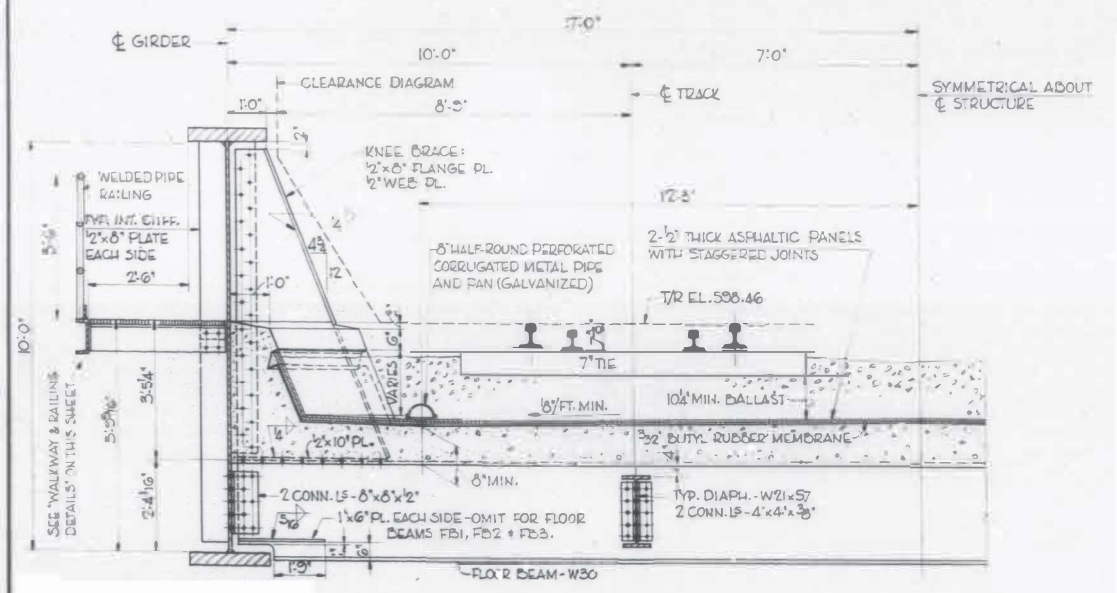
VAR. RTE.	SECTION	COUNTY	TOTAL SHEETS	SHEET NO.
VAR.	IL 7 22 BP	COOK	27	4
CONTRACT NO. 62U14				
ILLINOIS FED. AID PROJECT				



FRAMING PLAN



OUTSIDE ELEVATION - GIRDERS G1 & G2



TYP. CROSS SECTION

FOR INFORMATION ONLY

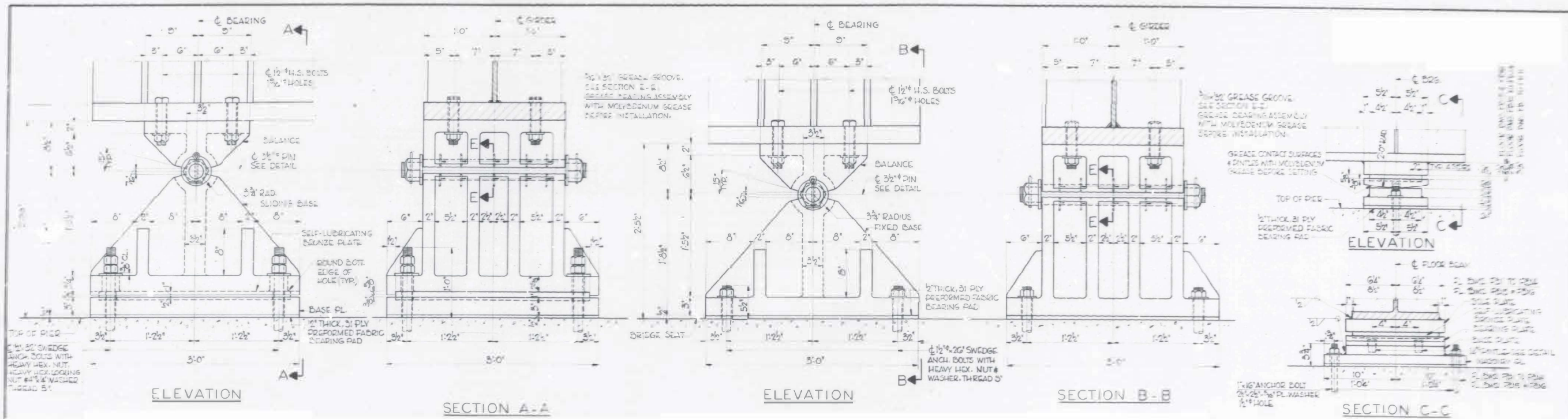
MODEL: Definit  
 FILE NAME: p:\wildcat\paw\viewer.com\PHWDOT\Documents\DOT\_Offices\Distrc\_1\Projects\109923\CADD\data\Design\109923-shh-cbba.dgn

USER NAME = naveed.hassan	DESIGNED -	REVISED -
PLOT SCALE = 100.0000 / in.	DRAWN -	REVISED -
PLOT DATE = 8/3/2022	CHECKED -	REVISED -
	DATE -	REVISED -

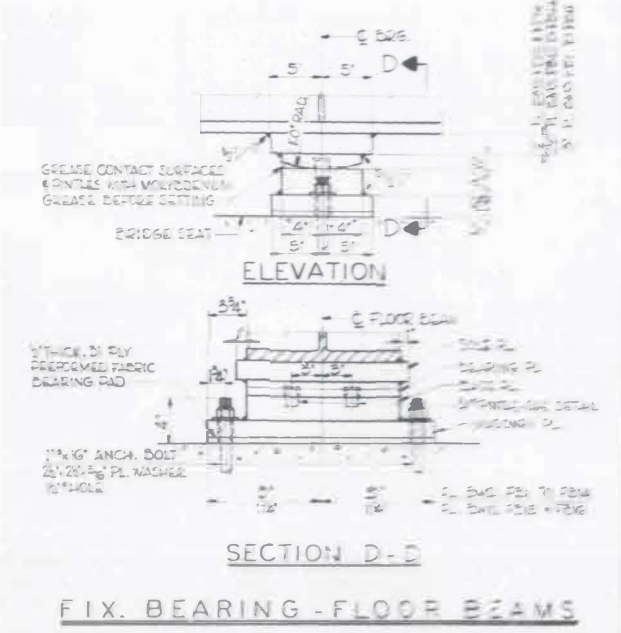
STATE OF ILLINOIS  
DEPARTMENT OF TRANSPORTATION

LOCATION 1: FRAMING PLAN			
127TH STREET			
SCALE:	SHEET	OF SHEETS	STA. TO STA.

VAR. RTE.	SECTION	COUNTY	TOTAL SHEETS	SHEET NO.
VAR.	IL 7 22 BP	COOK	27	5
CONTRACT NO. 62U14				
ILLINOIS F.E.D.A.ID P81 ECT				



EXP. BEARING - FLOOR BEAMS



FOR INFORMATION ONLY

MODEL: Definit FILE NAME: p:\w\dot\dw\sheet\com\p\m\dot\Documents\DOT\_Offices\District\_1\Projects\100923\CADD\data\Design\100923-shr-bla.sgp

USER NAME = naveed.hassan	DESIGNED -	REVISED -
	DRAWN -	REVISED -
PLOT SCALE = 100.0000' / in.	CHECKED -	REVISED -
PLOT DATE = 8/3/2022	DATE -	REVISED -

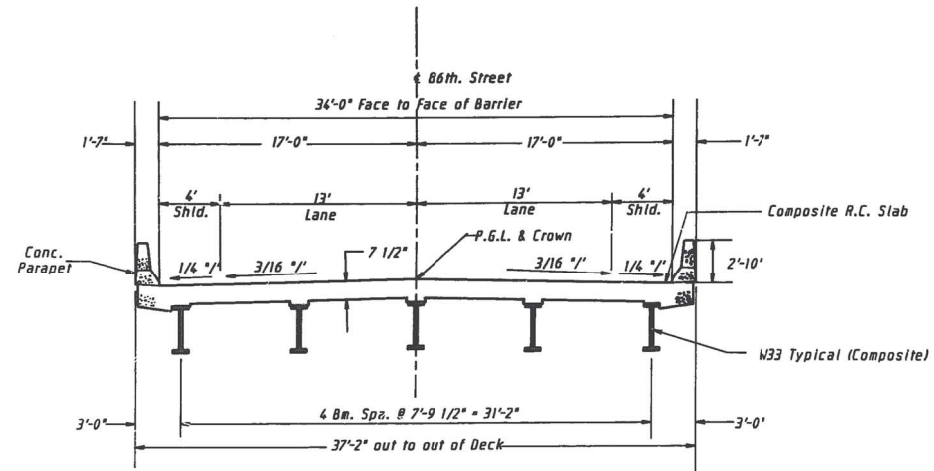
STATE OF ILLINOIS  
DEPARTMENT OF TRANSPORTATION

LOCATION 1: BEARING DETAILS  
127TH STREET

SCALE: SHEET OF SHEETS STA. TO STA.

VAR. RTE.	SECTION	COUNTY	TOTAL SHEETS	SHEET NO.
VAR.	IL 7 22 BP	COOK	27	6
			CONTRACT NO. 62U14	
ILLINOIS FED. AID PROJECT				





CROSS SECTION  
PROPOSED BRIDGE

FOR INFORMATION ONLY

MODEL: Default  
FILE: Mainfile.pia\ulsect-cw-beatley.com\FWIDOT\Documents\DOT Office\District: 1\Project\ID:100923\CADD\Drawings\Design\100923-ubr-1400.dgn

USER NAME = naveed,hassan	DESIGNED -	REVISED -
	DRAWN -	REVISED -
PLOT SCALE = 100,0000' / in.	CHECKED -	REVISED -
PLOT DATE = 8/3/2022	DATE -	REVISED -

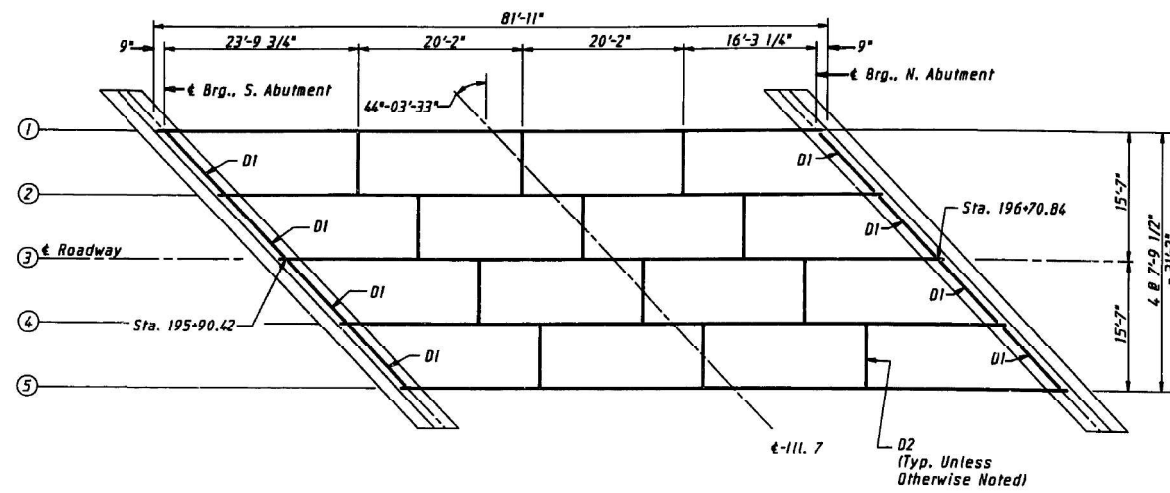
**STATE OF ILLINOIS  
DEPARTMENT OF TRANSPORTATION**

**LOCATION 2: BRIDGE CROSS SECTION  
ILLINOIS ROUTE 7**

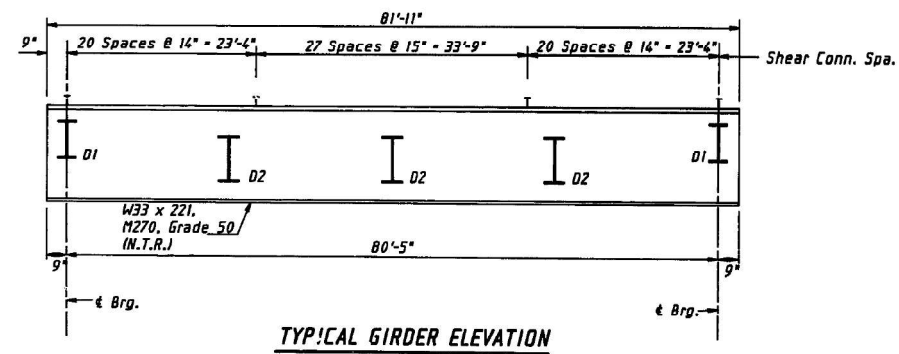
SCALE: SHEET OF SHEETS STA. TO STA.

VAR. RTE.	SECTION	COUNTY	TOTAL SHEETS	SHEET NO.
VAR.	IL 7 22 BP	COOK	27	8
CONTRACT NO. 62U14				
ILLINOIS FED. AID PROJECT				

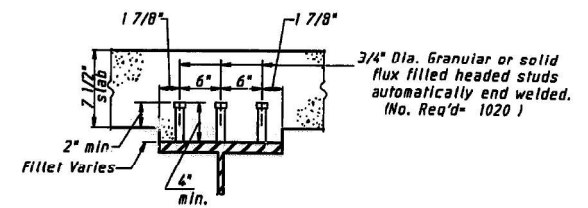




PLAN



TYPICAL GIRDER ELEVATION



SHEAR STUDS

FOR INFORMATION ONLY

MODEL: Default  
FILE NAME: I:\Illinois\paw\_bentley.com\PIV\DOT\Documents\WDOT\_Offices\Dist.ctb 1\Projects\1100923\CAD\Drawings\1100923-1111.dgn

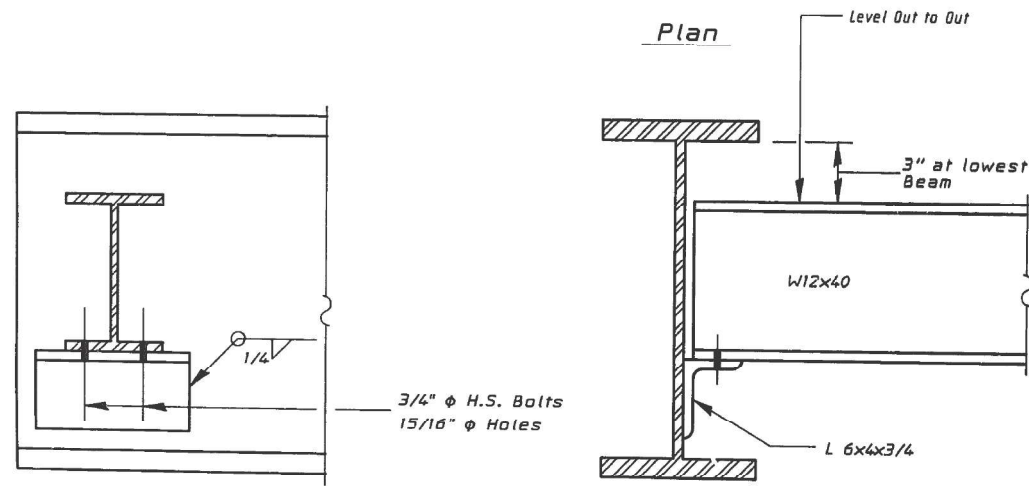
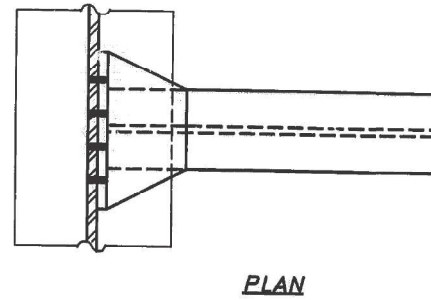
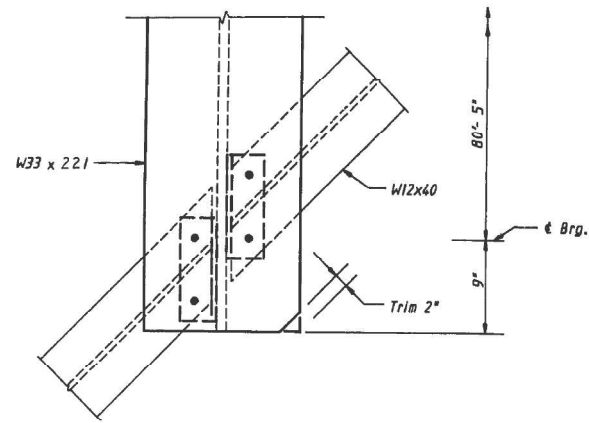
USER NAME = naveed.hassan	DESIGNED -	REVISED -
PLOT SCALE = 100,0840' / in.	DRAWN -	REVISED -
PLOT DATE = 2/3/2023	CHECKED -	REVISED -
	DATE -	REVISED -

STATE OF ILLINOIS  
DEPARTMENT OF TRANSPORTATION

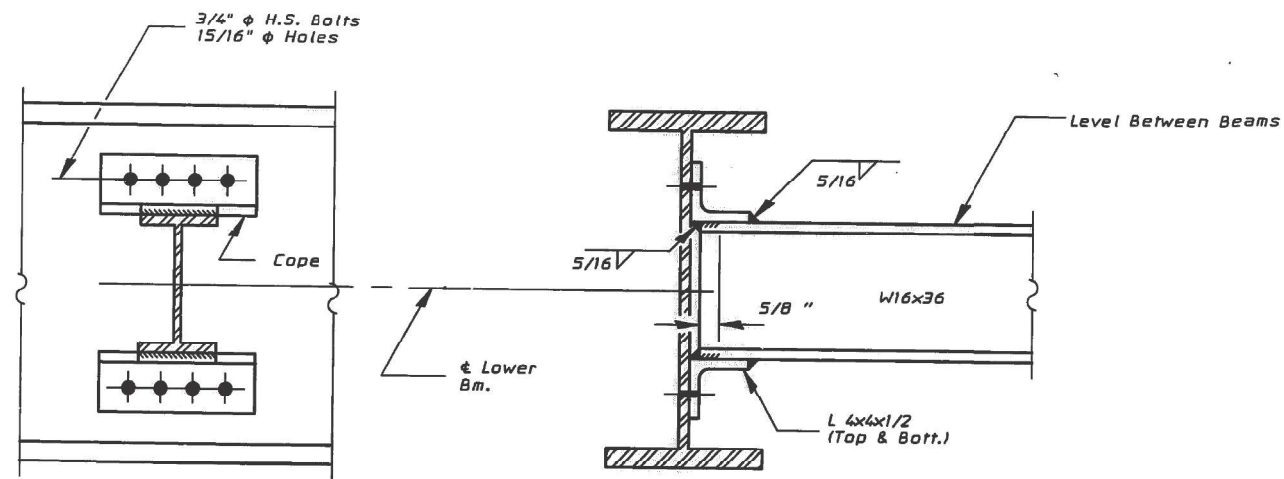
LOCATION 2: FRAMING PLANS  
ILLINOIS 7 (AT 86TH AVE.)

SCALE: SHEET 1 OF 2 SHEETS STA. TO STA.

V.A.R. RTE.	SECTION	COUNTY	TOTAL SHEETS	SHEET NO.
VAR.	IL 7 22 BP	COOK	27	9
CONTRACT NO. 62U14				
ILLINOIS FED. AID PROJECT				



**DIAPHRAGM D1**  
8 Required



**DIAPHRAGM D2**  
12 Required

Note: Two Hardened Washers Shall Be Required Over All Oversize Holes For Diaphragms.

FOR INFORMATION ONLY

MODEL: Default  
 FILE: Model - 10001160.dwg, Bentley.com, P:\P\DOT\Documents\DOT Offices\Bentley, I:\Projects\100923\100923-CADD\100923-11-10-23.dwg

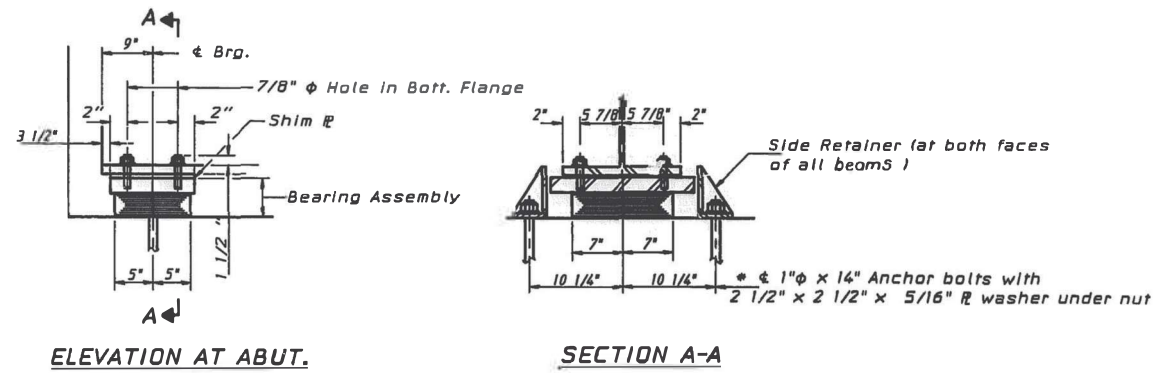
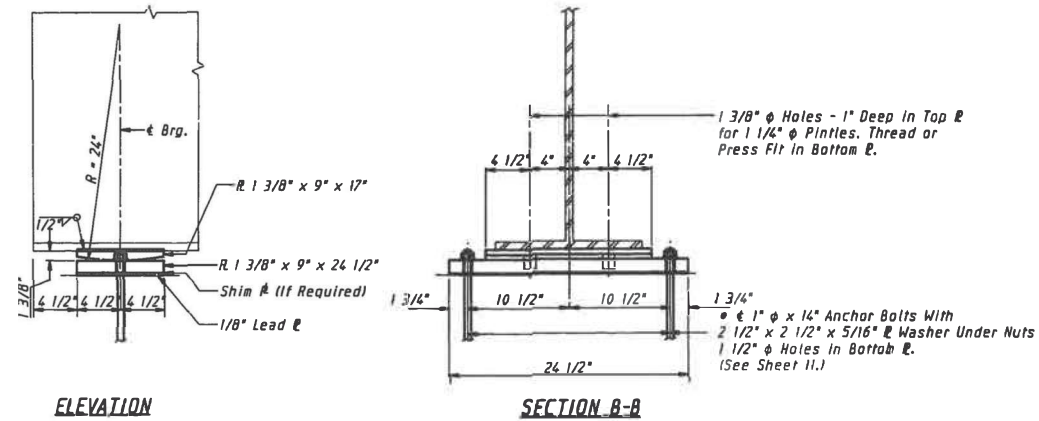
USER NAME = naveed.hassan	DESIGNED -	REVISED -
PLOT SCALE = 100.0160' / in.	DRAWN -	REVISED -
PLOT DATE = 2/3/2023	CHECKED -	REVISED -
	DATE -	REVISED -

STATE OF ILLINOIS  
DEPARTMENT OF TRANSPORTATION

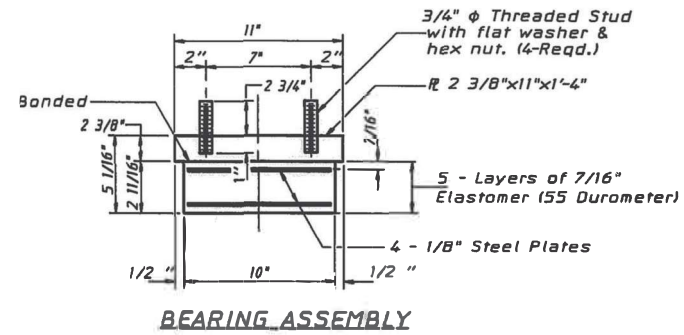
LOCATION 2: FRAMING PLANS  
ILLINOIS 7 (AT 86TH AVE.)

SCALE: SHEET 2 OF 2 SHEETS STA. TO STA.

V.A.R. RTE.	SECTION	COUNTY	TOTAL SHEETS	SHEET NO.
VAR.	IL 7 22 BP	COOK	27	9A
			CONTRACT NO. 62U14	
			ILLINOIS FED. AID PROJECT	



**TYPE I ELASTOMERIC EXP. BRG.**



Note: Shim plates shall not be placed under Bearing Assembly.

FOR INFORMATION ONLY

MODEL: Default  
FILE NAME: P:\WIDC\pw.bentley.com\FWIDOT\Documents\DOT - Offices\District 1\Projects\100923\Cadd\Drawings\100923-shr-draw.dgn

USER NAME = ra.vied.has.in	DESIGNED -	REVISED -
PLOT SCALE = 100.0000' / in	DRAWN -	REVISED -
PLOT DATE = 8/3/2022	CHECK ID -	REVISED -
	DATE -	REVISED -

STATE OF ILLINOIS  
DEPARTMENT OF TRANSPORTATION

LOCATION 2: BEARING DETAILS  
ILLINOIS ROUTE 7

SCALE: 5 BET OF SHEETS STA. TO STA.

VAR. RTE.	SECTION	COUNTY	TOTAL SHEETS	SHEET NO.
VAR.	IL 7 22 BP	COOK	27	10
CONTRACT NO. 62U14				
ILLINOIS FED. AID PROJECT				

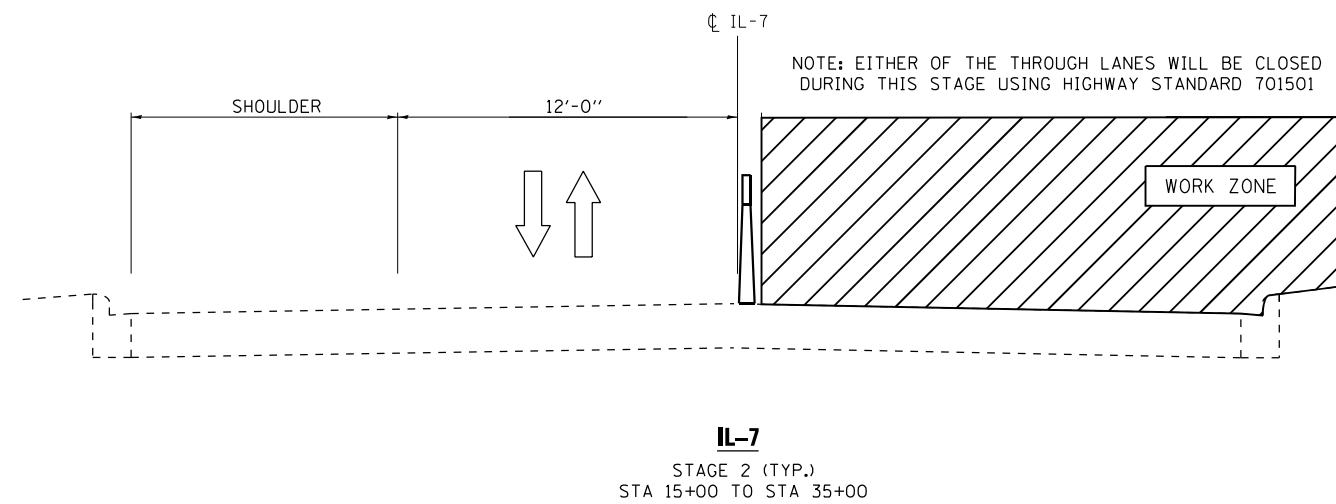
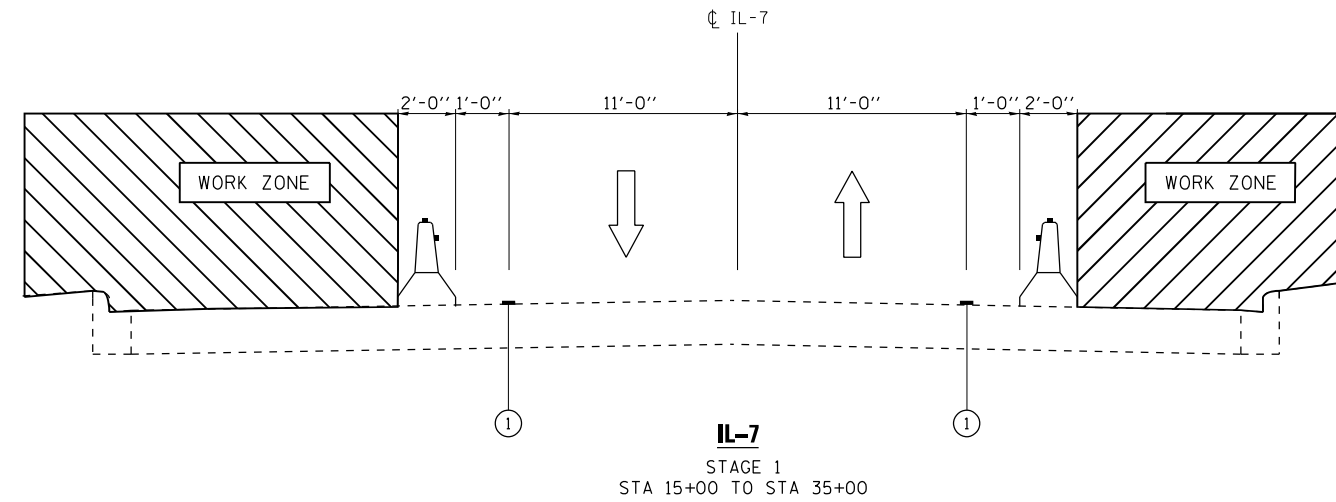


**LEGEND**

- ① TEMPORARY PAVEMENT MARKING - LINE 4" - TAPE TYPE IV - SHOULDER LANE, WHITE (TYP.)

**STAGING SEQUENCE**

- STAGE I - EB & WB IL-7 SHOULDER CLOSURE
- STAGE II - THROUGH LANE CLOSURES USING HIGHWAY STANDARD 701501 TO BE PAID FOR AS TC&P STD 701501 (LSUM)



MODEL: Default  
FILE: Mainfile.plt  
PROJECT: C:\Users\paw.bentley.com\P\W\DOT\Documents\DOT Office\District: I\Project\100923\CADD\DATA\Design\100923-shb-zyp\pic1-staging.dgn

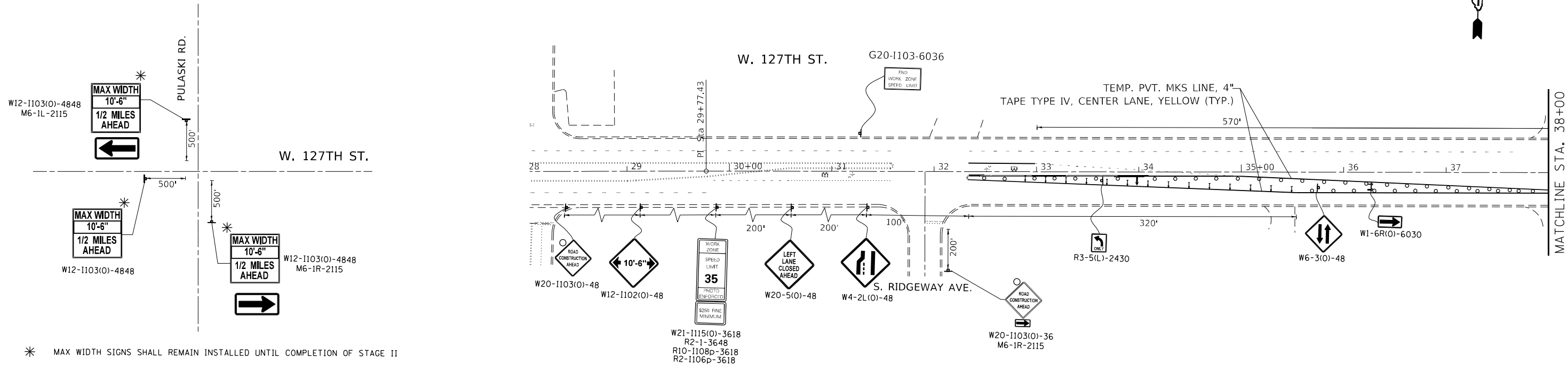
USER NAME = Omar.Aboelnadie	DESIGNED -	REVISED -
	DRAWN -	REVISED -
PLOT SCALE = 87.4338 * / in.	CHECKED -	REVISED -
PLOT DATE = 12/20/2022	DATE -	REVISED -

**STATE OF ILLINOIS  
DEPARTMENT OF TRANSPORTATION**

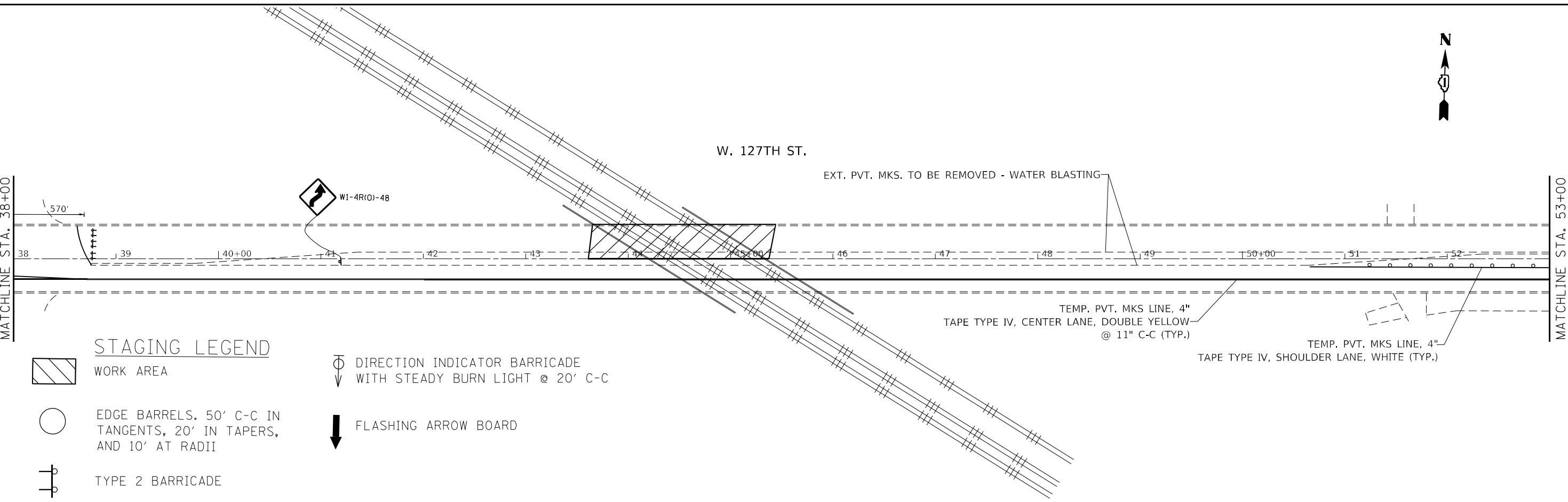
**STAGING TYPICAL SECTION  
IL-7**

SCALE: SHEET OF SHEETS STA. TO STA.

V.A.R. RTE.	SECTION	COUNTY	TOTAL SHEETS	SHEET NO.
V.A.R.	IL 7 22 BP	COOK	27	12
			CONTRACT NO. 62U14	
		ILLINOIS	FED. AID PROJECT	



\* MAX WIDTH SIGNS SHALL REMAIN INSTALLED UNTIL COMPLETION OF STAGE II



**STAGING LEGEND**



WORK AREA



EDGE BARRELS. 50' C-C IN TANGENTS, 20' IN TAPERS, AND 10' AT RADII



TYPE 2 BARRICADE



DIRECTION INDICATOR BARRICADE WITH STEADY BURN LIGHT @ 20' C-C



FLASHING ARROW BOARD

MODEL: Default  
 FILE NAME: \\pulsaski\pww\illdot\Documents\DOT\offices\hassan\11\Projects\110923\CADD\Drawings\110923-stk-ctg\110923.ctb  
 PROJECT: 110923

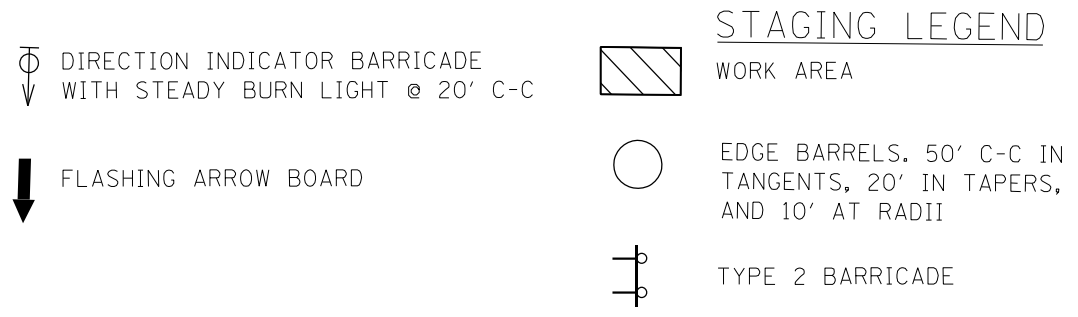
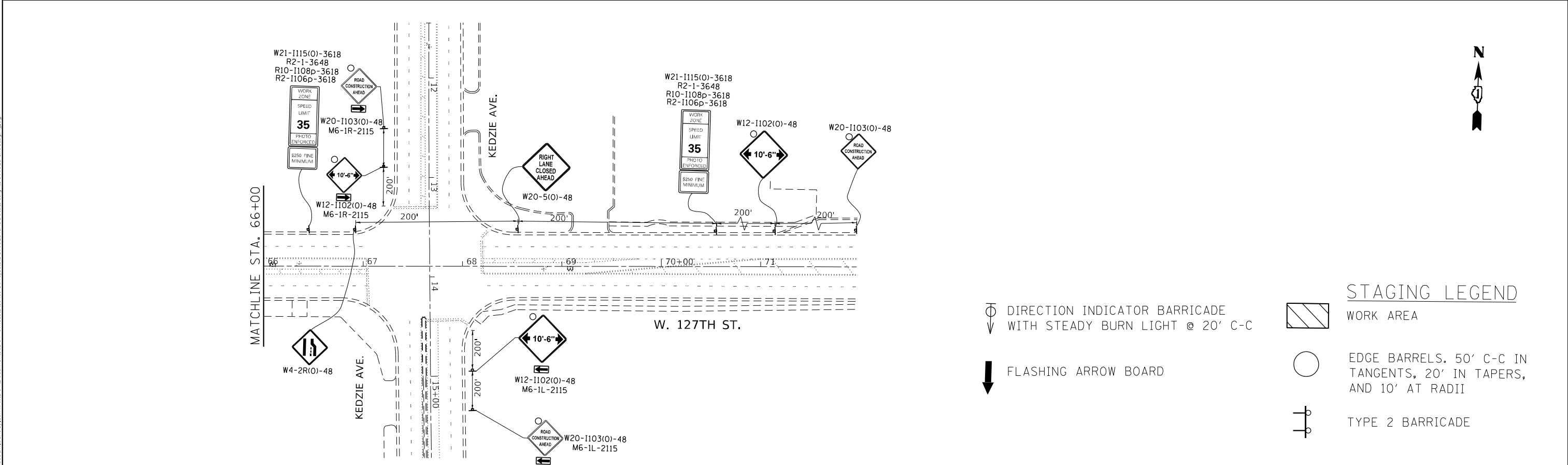
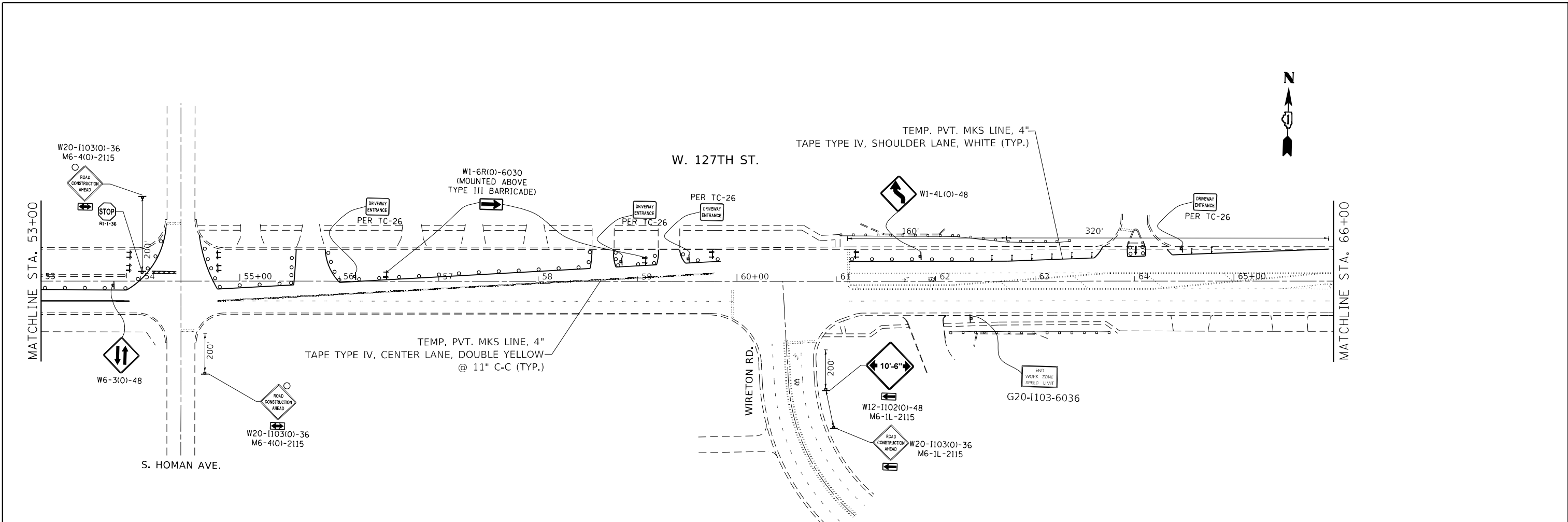
USER NAME = naveed,hassan	DESIGNED -	REVISED -
	DRAWN -	REVISED -
PLOT SCALE = 100,0146' / in.	CHECKED -	REVISED -
PLOT DATE = 1/17/2023	DATE -	REVISED -

**STATE OF ILLINOIS  
DEPARTMENT OF TRANSPORTATION**

**CONSTRUCTION STAGE I  
127TH STREET**

SCALE: SHEET OF SHEETS STA. TO STA.

V.A.R. RTE.	SECTION	COUNTY	TOTAL SHEETS	SHEET NO.
V.A.R.	IL 7 22 BP	COOK	27	13
CONTRACT NO. 62U14				
ILLINOIS FED. AID PROJECT				



MODEL: Default  
 FILE: I:\mhc\pww\110110\110110.dwg  
 PROJECT: 110110\110110.dwg  
 USER: naved.hassan

USER NAME = naved.hassan	DESIGNED -	REVISED -
DRAWN -	REVISOR -	
PLOT SCALE = 100.0540' / in.	CHECKED -	REVISOR -
PLOT DATE = 1/13/2023	DATE -	REVISOR -

**STATE OF ILLINOIS  
DEPARTMENT OF TRANSPORTATION**

<b>CONSTRUCTION STAGE I 127TH STREET</b>				
SCALE:	SHEET	OF	SHEETS	STA. TO STA.

V.A.R. RTE.	SECTION	COUNTY	TOTAL SHEETS	SHEET NO.
V.A.R.	IL 7 22 BP	COOK	27	14
CONTRACT NO. 62U14				
ILLINOIS FED. AID PROJECT				

**STAGING LEGEND**



WORK AREA



EDGE BARRELS, 50' C-C IN TANGENTS, 20' IN TAPERS, AND 10' AT RADII



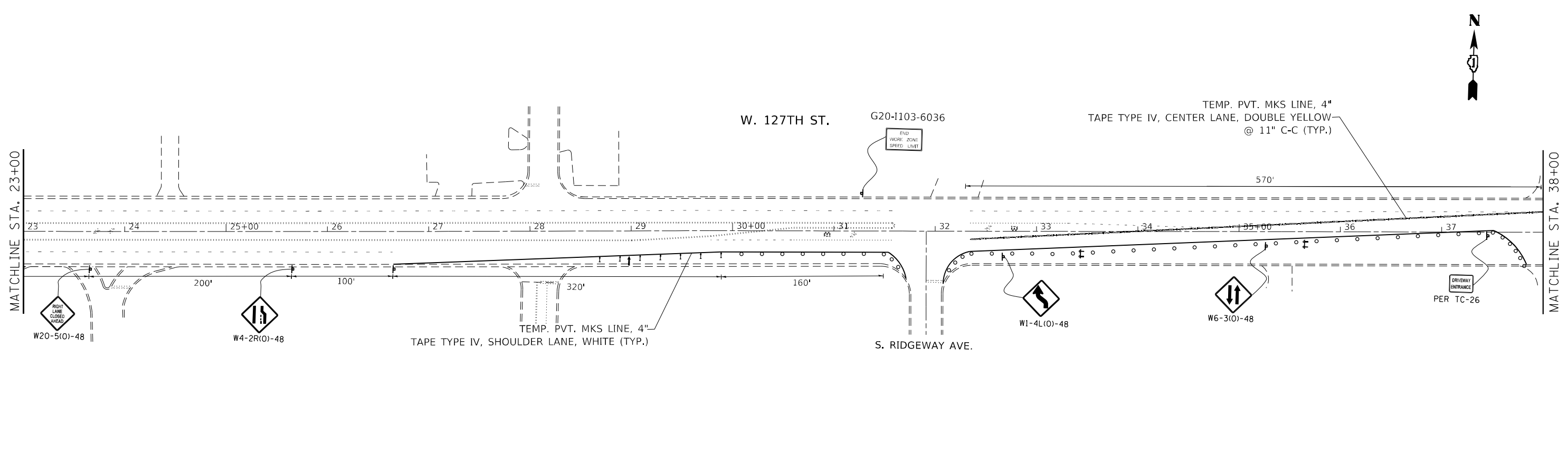
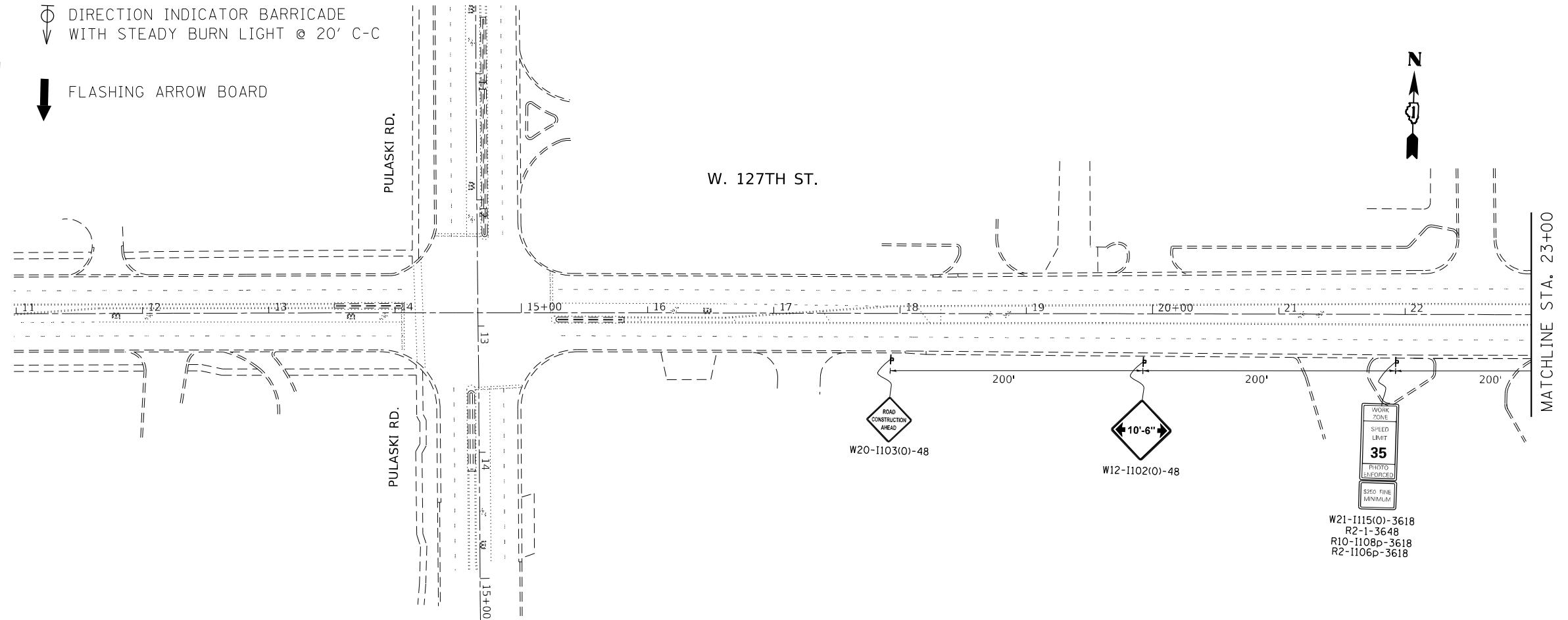
TYPE 2 BARRICADE



DIRECTION INDICATOR BARRICADE WITH STEADY BURN LIGHT @ 20' C-C



FLASHING ARROW BOARD



MODEL: Default  
 FILE: \\nrc-ez-bentley.com\p01\DOT\Documents\DOT Offices\Bartlett\_1\Projects\1109923\CADD\Drawings\1109923-ah-staging.dgn

USER NAME = naved,hessan	DESIGNED -	REVISED -
DRAWN -	REVISED -	
PLOT SCALE = 99.9910' / in.	CHECKED -	REVISED -
PLOT DATE = 1/13/2023	DATE -	REVISED -

**STATE OF ILLINOIS**  
**DEPARTMENT OF TRANSPORTATION**

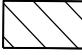

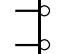


**CONSTRUCTION STAGE II**  
**127TH STREET**

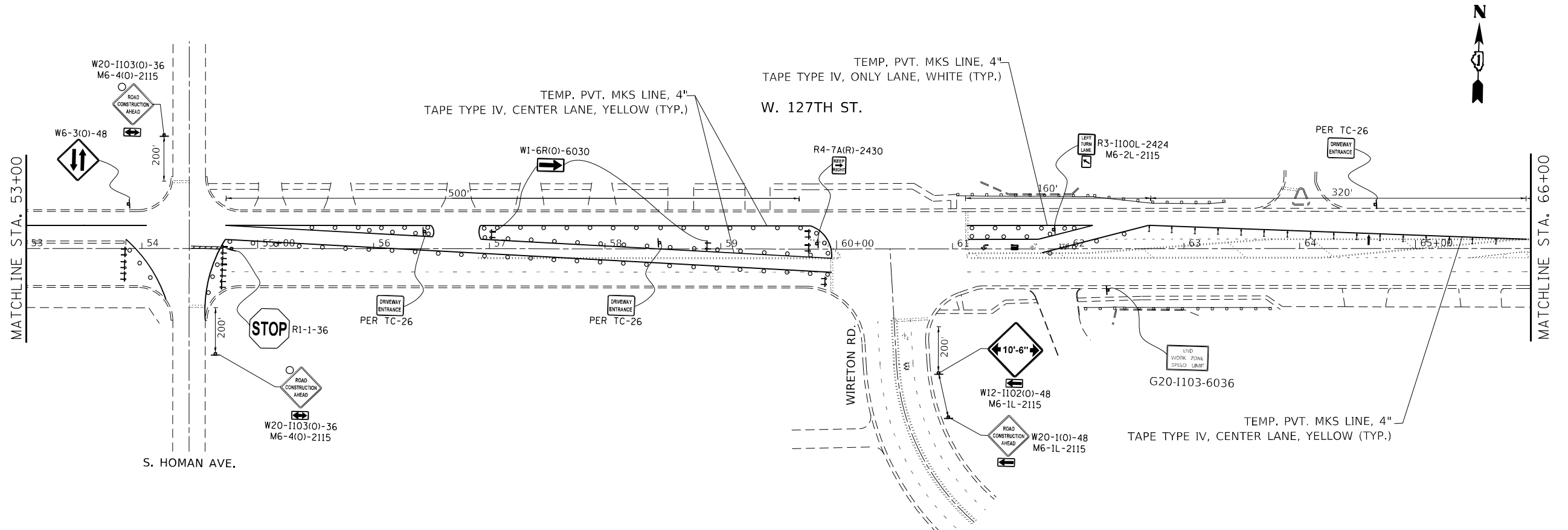
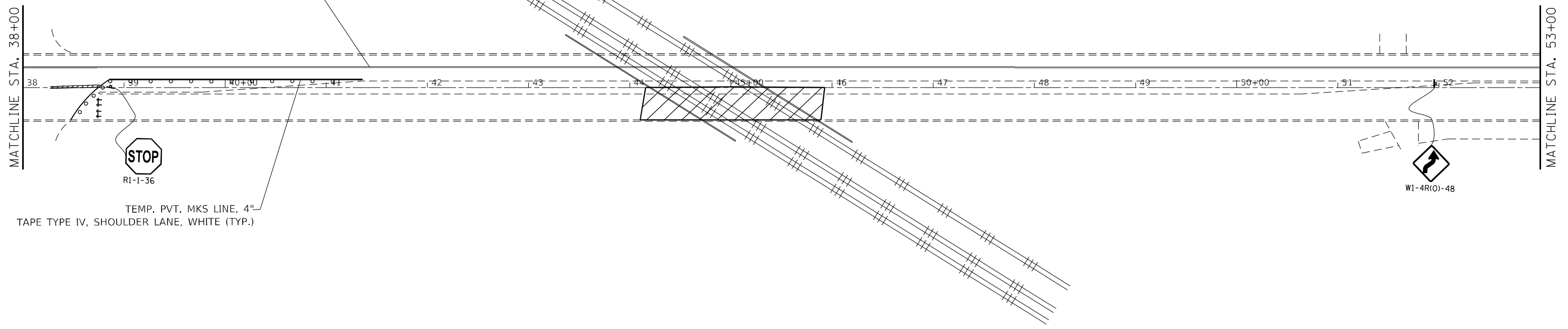
SCALE: SHEET OF SHEETS STA. TO STA.

V.A.R. R.I.E.	SECTION	COUNTY	TOTAL SHEETS	SHEET NO.
V.A.R.	IL 7 22 BP	COOK	27	15
CONTRACT NO. 62U14				
ILLINOIS FED. AID PROJECT				



**STAGING LEGEND**

-  WORK AREA
-  EDGE BARRELS. 50' C-C IN TANGENTS, 20' IN TAPERS, AND 10' AT RADII
-  TYPE 2 BARRICADE
-  DIRECTION INDICATOR BARRICADE WITH STEADY BURN LIGHT @ 20' C-C
-  FLASHING ARROW BOARD



MODEL: D:\default  
 FILE NAME: p:\hildebrand\benchev.com\p\DOT\Documents\DOT Office\District 1\Project\11009231\CAD\Drawn\Drawn\11009231-ent-ent.dgn

USER NAME = naveed.hassan	DESIGNED -	REVISED -
DRAWN -	REVISOR -	
PLOT SCALE = 100.1425' / in.	CHECKED -	REVISED -
PLOT DATE = 1/13/2023	DATE -	REVISED -

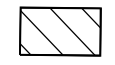
**STATE OF ILLINOIS**  
**DEPARTMENT OF TRANSPORTATION**

**CONSTRUCTION STAGE II**  
**127TH STREET**

SCALE: SHEET OF SHEETS STA. TO STA.

V.A.R. RTE.	SECTION	COUNTY	TOTAL SHEETS	SHEET NO.
V.A.R.	IL 7 22 BP	COOK	27	16
CONTRACT NO. 62U14			ILLINOIS FED. AID PROJECT	

# STAGING LEGEND



WORK AREA



EDGE BARRELS, 50' C-C IN TANGENTS, 20' IN TAPERS, AND 10' AT RADII



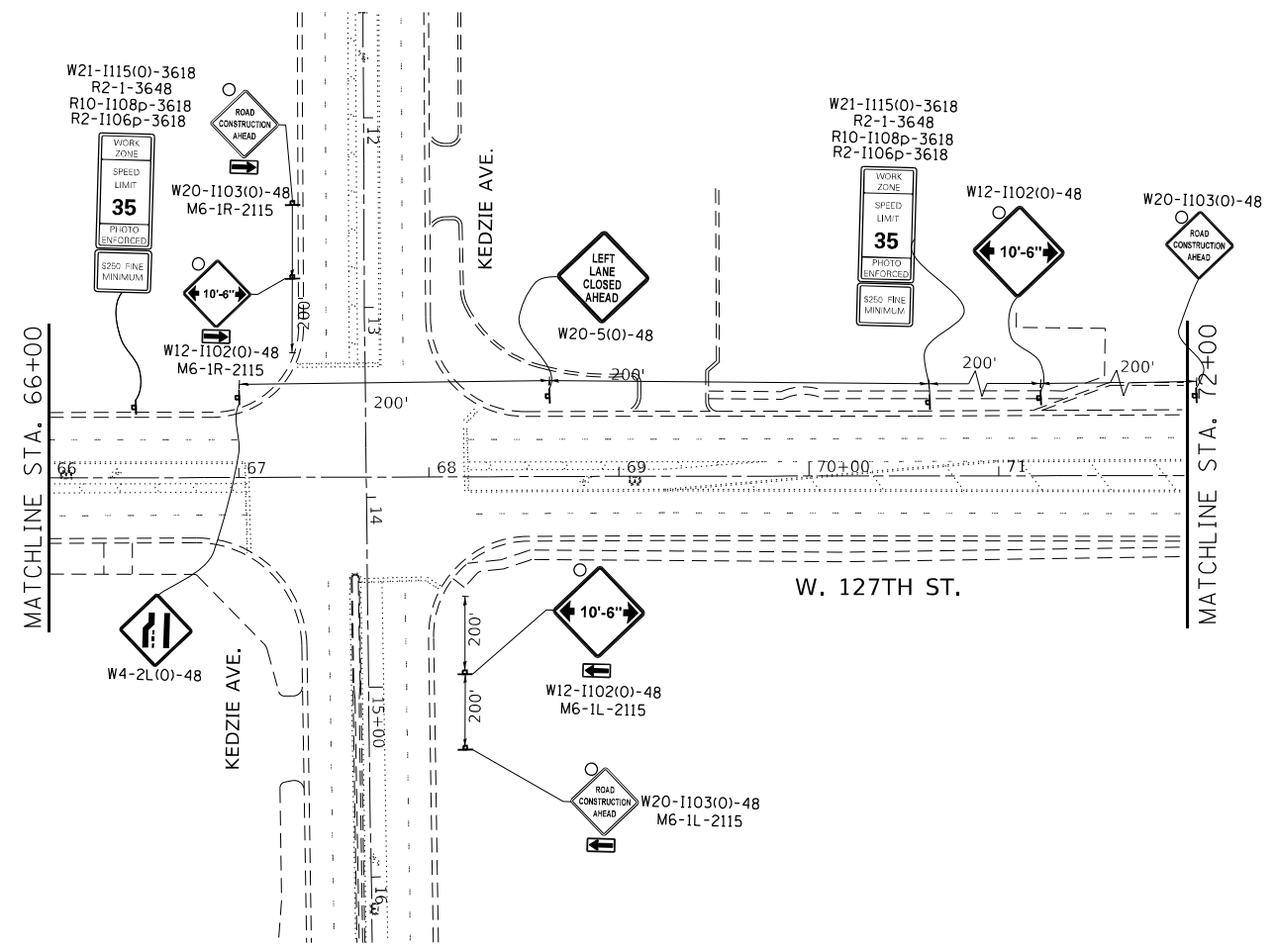
TYPE 2 BARRICADE



DIRECTION INDICATOR BARRICADE WITH STEADY BURN LIGHT @ 20' C-C



FLASHING ARROW BOARD



MODEL Path: null  
 FILE NAME: \\hlfed-cw-bentley.com\PW\DOT\Documents\DOT\_Offices\Dir\ftt\_1\Projects\ID100923\CAD\data\Design\ID100923-21h-stairtop.dgn

USER NAME = naveed.hassan	DESIGNED -	REVISED -
PLOT SCALE = 100.0336' / in.	DRAWN -	REVISED -
PLOT DATE = 1/13/2023	CHECKED -	REVISED -
	DATE -	REVISED -


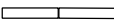
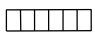
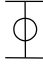
**STATE OF ILLINOIS**  
**DEPARTMENT OF TRANSPORTATION**

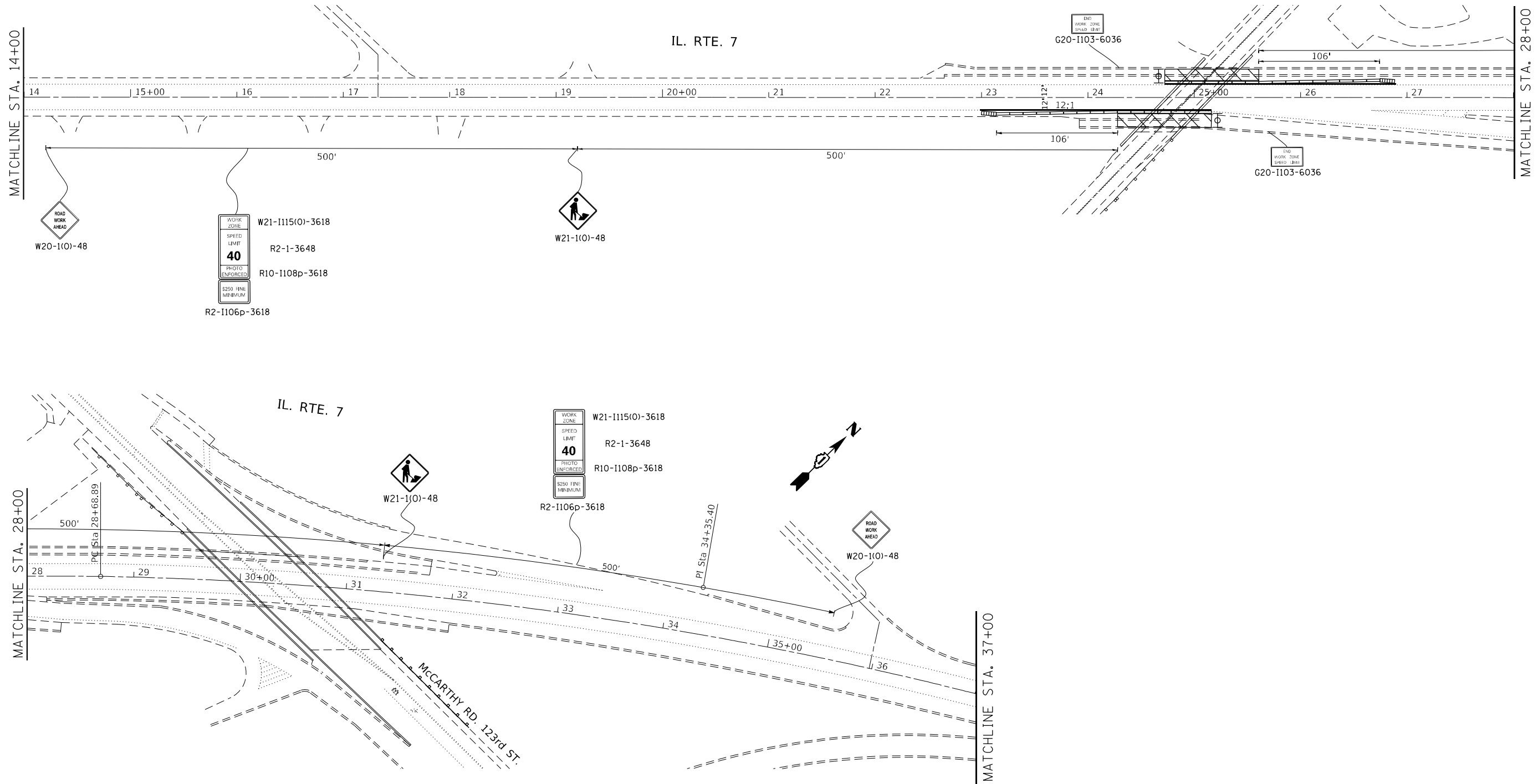
**CONSTRUCTION STAGE II**  
**127TH STREET**

SCALE: SHEET OF SHEETS STA. TO STA.

V.A.R. RTE.	SECTION	COUNTY	TOTAL SHEETS	SHEET NO.
V.A.R.	IL 7 22 BP	COOK	27	17
CONTRACT NO. 62U14			ILLINOIS FED. AID PROJECT	

# STAGING LEGEND

-  WORK AREA
-  TEMPORARY BARRIER WALL
-  IMPACT ATTENUATOR (NARROW, FULLY REDIRECTIVE) TEST LEVEL 3
-  TYPE 1 OR TYPE 2 BARRICADE



MODEL: D:\p1\11\1115\1115.dwg  
 FILE NAME: p1115\1115.dwg  
 PROJECT: I:\Projects\1115\1115.dwg  
 USER: Omar.Aboalnadi

USER NAME = Omar.Aboalnadi	DESIGNED -	REVISED -
DRAWN -	REVISOR -	
PLOT SCALE = 100.0000' / in.	CHECKED -	REVISOR -
PLOT DATE = 12/19/2022	DATE -	REVISOR -

**STATE OF ILLINOIS  
DEPARTMENT OF TRANSPORTATION**

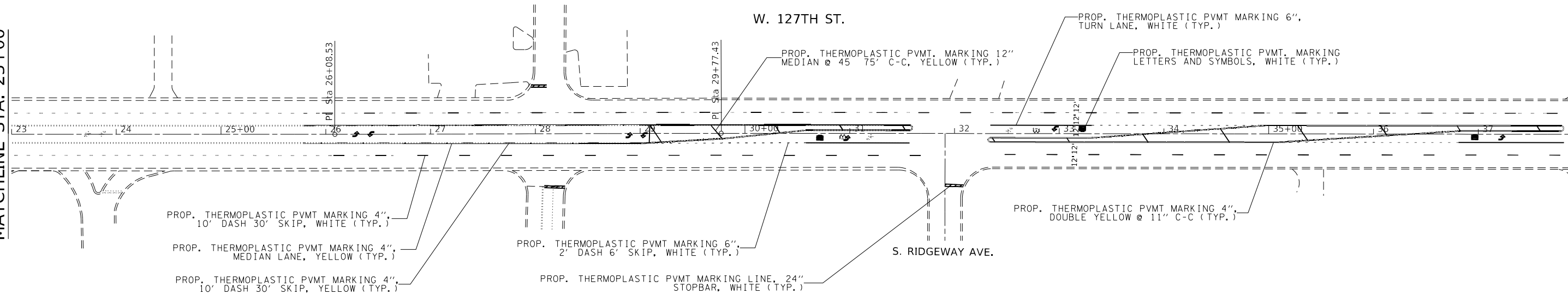
<b>CONSTRUCTION STAGING I IL 7</b>				
SCALE:	SHEET	OF	SHEETS	STA. TO STA.

V.A.R. RTE.	SECTION	COUNTY	TOTAL SHEETS	SHEET NO.
V.A.R.	IL 7 22 BP	COOK	27	18
CONTRACT NO. 62U14				
ILLINOIS FED. AID PROJECT				



MATCHLINE STA. 23+00

MATCHLINE STA. 38+00



PROP. THERMOPLASTIC PVMT MARKING 4",  
10' DASH 30' SKIP, WHITE (TYP.)

PROP. THERMOPLASTIC PVMT MARKING 4",  
MEDIAN LANE, YELLOW (TYP.)

PROP. THERMOPLASTIC PVMT MARKING 4",  
10' DASH 30' SKIP, YELLOW (TYP.)

PROP. THERMOPLASTIC PVMT MARKING 6",  
2' DASH 6' SKIP, WHITE (TYP.)

PROP. THERMOPLASTIC PVMT MARKING LINE, 24"  
STOPBAR, WHITE (TYP.)

PROP. THERMOPLASTIC PVMT. MARKING 12"  
MEDIAN @ 45' 75' C-C, YELLOW (TYP.)

PROP. THERMOPLASTIC PVMT MARKING 6",  
TURN LANE, WHITE (TYP.)

PROP. THERMOPLASTIC PVMT. MARKING  
LETTERS AND SYMBOLS, WHITE (TYP.)

PROP. THERMOPLASTIC PVMT MARKING 4",  
DOUBLE YELLOW @ 11" C-C (TYP.)

MODEL: D:\dgn\11111111.dgn  
FILE: 11111111.dgn  
PROJECT: 11111111  
DATE: 12/14/2022

USER NAME = Omar.Aboalnada	DESIGNED -	REVISED -
	DRAWN -	REVISED -
PLOT SCALE = 100.0000' / in.	CHECKED -	REVISED -
PLOT DATE = 12/14/2022	DATE -	REVISED -

**STATE OF ILLINOIS  
DEPARTMENT OF TRANSPORTATION**

**PROPOSED PAVEMENT MARKING PLAN  
127TH STREET**

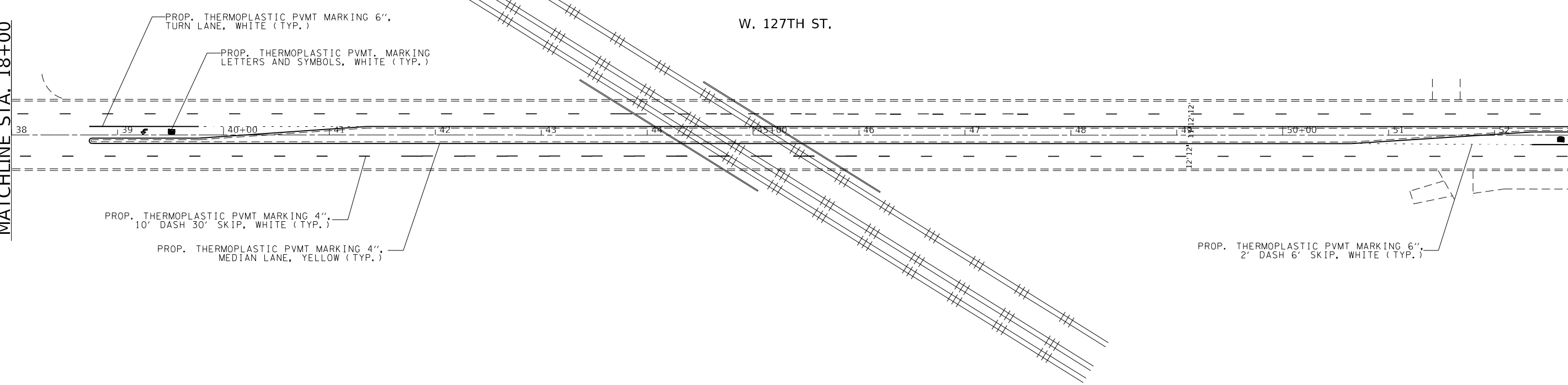
SCALE: SHEET OF SHEETS STA. TO STA.

V.A.R. RTE.	SECTION	COUNTY	TOTAL SHEETS	SHEET NO.
V.A.R.	IL 7 22 BP	COOK	27	19
			CONTRACT NO. 62U14	
		ILLINOIS	FED. AID PROJECT	

MODEL: D:\p111  
 FILE NAME: p111\p111\csw\_bentley.com\PROJECTS\DOT\Documents\DOT\Office\Drawings\11\Project\11\009231\CD\Drawings\Design\009231-sub\pavement\_marking.dgn

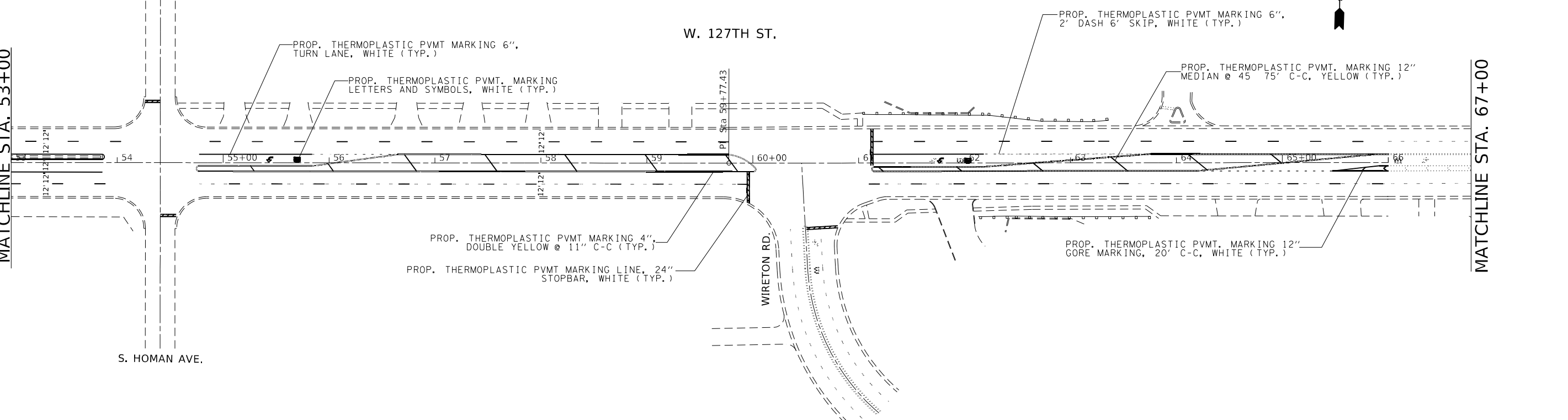
MATCHLINE STA. 18+00

MATCHLINE STA. 53+00



MATCHLINE STA. 53+00

MATCHLINE STA. 67+00

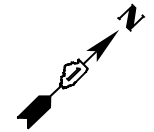
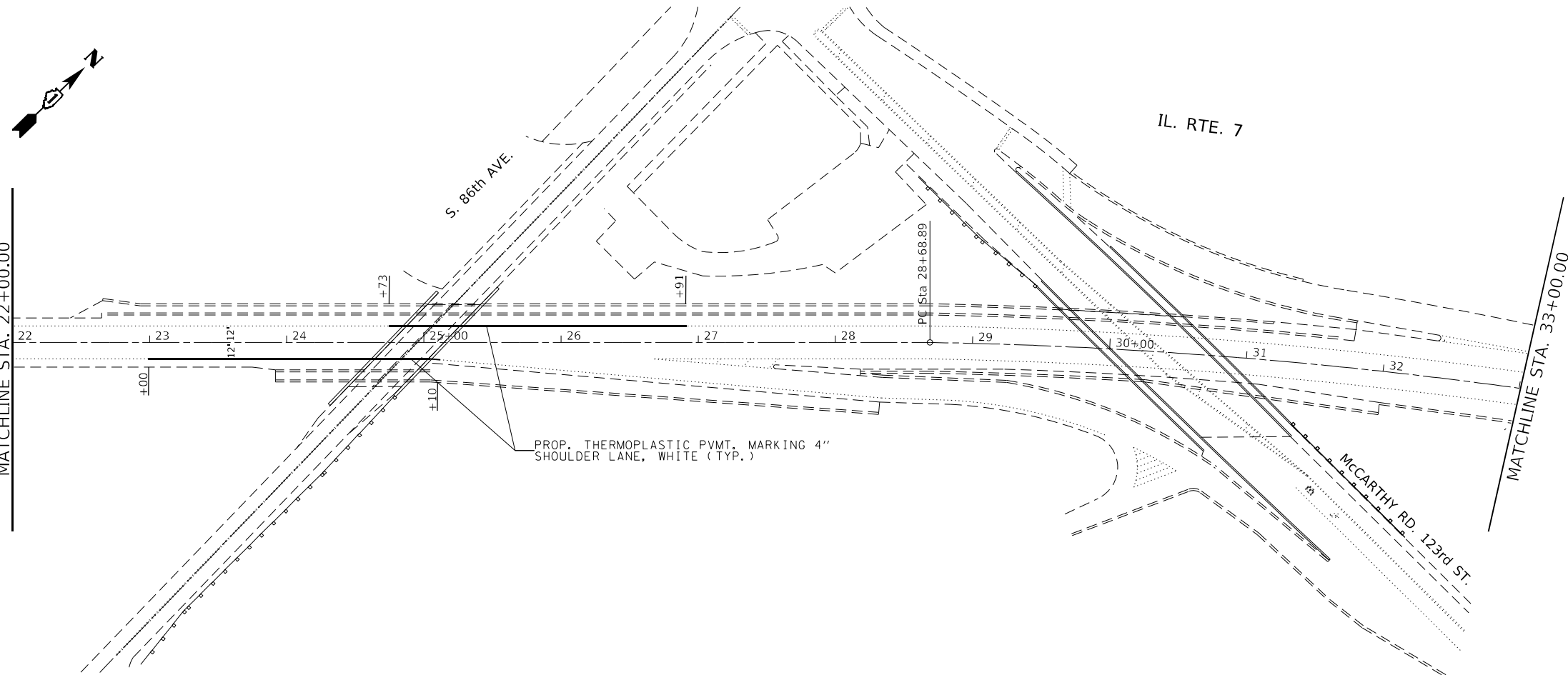


USER NAME = Omar.Aboalhadie	DESIGNED -	REVISED -
	DRAWN -	REVISED -
PLOT SCALE = 100,0060' / in.	CHECKED -	REVISED -
PLOT DATE = 12/14/2022	DATE -	REVISED -

**STATE OF ILLINOIS**  
**DEPARTMENT OF TRANSPORTATION**

<b>PROPOSED PAVEMENT MARKING PLAN</b>				
<b>127TH STREET</b>				
SCALE:	SHEET	OF	SHEETS	STA. TO STA.

V.A.R. RTE.	SECTION	COUNTY	TOTAL SHEETS	SHEET NO.
V.A.R.	IL 7 22 BP	COOK	27	20
CONTRACT NO. 62U14				
ILLINOIS FED. AID PROJECT				



MODEL: Default  
 FILE: Mainfile.plt  
 I:\Projects\100923\CADD\Drawings\100923\100923-21r-21a.dwg

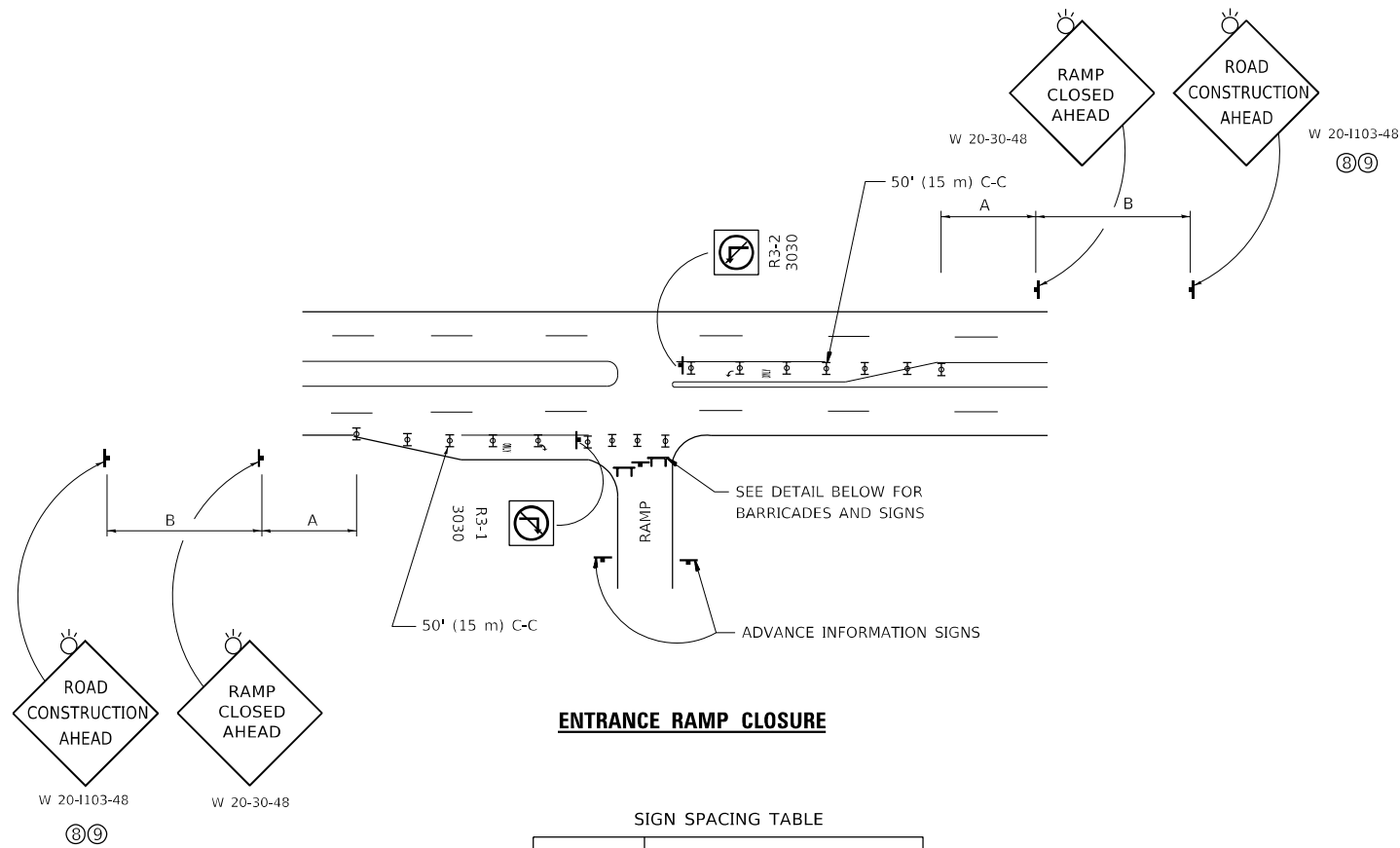
USER NAME = Omar.Aboonadie	DESIGNED -	REVISED -
PLOT SCALE = 100,0000 ' / in.	DRAWN -	REVISED -
PLOT DATE = 12/14/2022	CHECKED -	REVISED -
	DATE -	REVISED -

**STATE OF ILLINOIS**  
**DEPARTMENT OF TRANSPORTATION**

**PROPOSED PAVEMENT MARKING PLAN**  
**ILLINOIS 7 (AT 86TH AVE.)**

SCALE:      SHEET      OF      SHEETS      STA.      TO STA.

V.A.R. RTE.	SECTION	COUNTY	TOTAL SHEETS	SHEET NO.
V.A.R.	IL 7 22 BP	COOK	27	21
			CONTRACT NO. 62U14	
		ILLINOIS	FED. AID PROJECT	

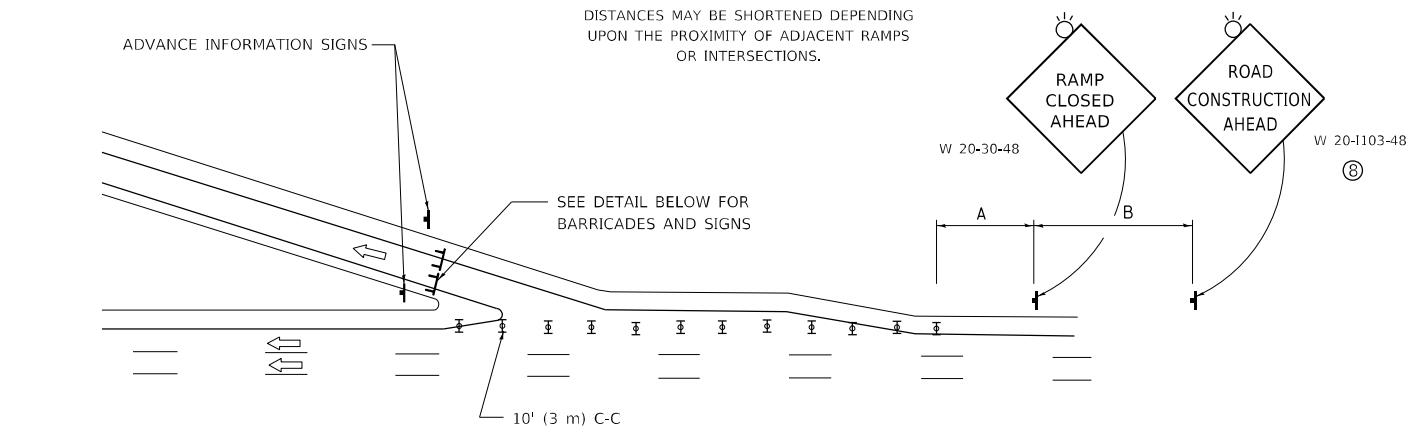


**ENTRANCE RAMP CLOSURE**

SIGN SPACING TABLE

FACILITY	DISTANCE BETWEEN SIGNS	
	A	B
EXPRESSWAY >24 HOURS	1000' (300 m)	1500' (450 m)
EXPRESSWAY ≤24 HOURS	500' (150 m)	500' (150 m)
ARTERIAL 55 MPH	500' (150 m)	500' (150 m)
ARTERIAL 50-45 MPH	350' (100 m)	350' (100 m)
ARTERIAL <45 MPH	200' (60 m)	200' (60 m)

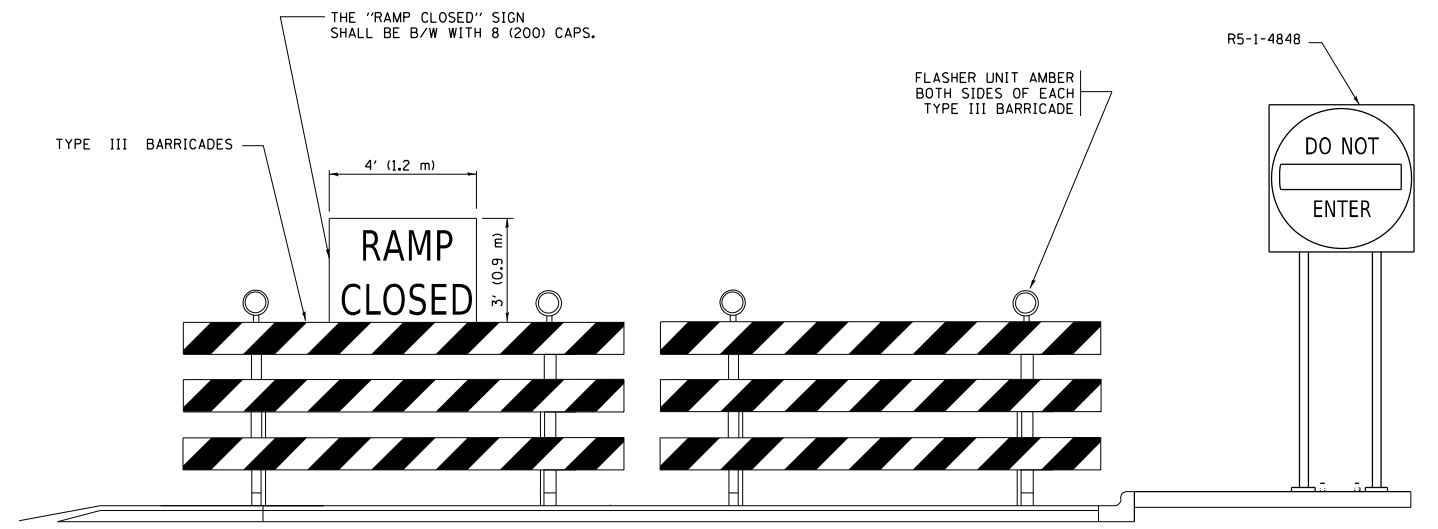
DISTANCES MAY BE SHORTENED DEPENDING UPON THE PROXIMITY OF ADJACENT RAMPS OR INTERSECTIONS.



**EXIT RAMP CLOSURE**

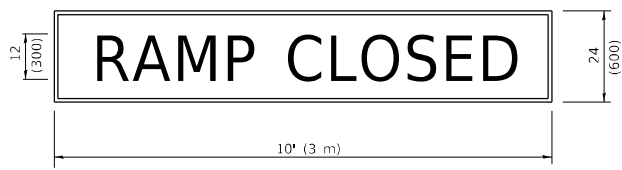
**SYMBOLS**

- ⊓ TYPE II BARRICADE OR DRUM
- ⊓ TYPE III BARRICADE WITH 2 FLASHING LIGHTS



**DETAIL FOR REQUIRED BARRICADES & SIGNS**

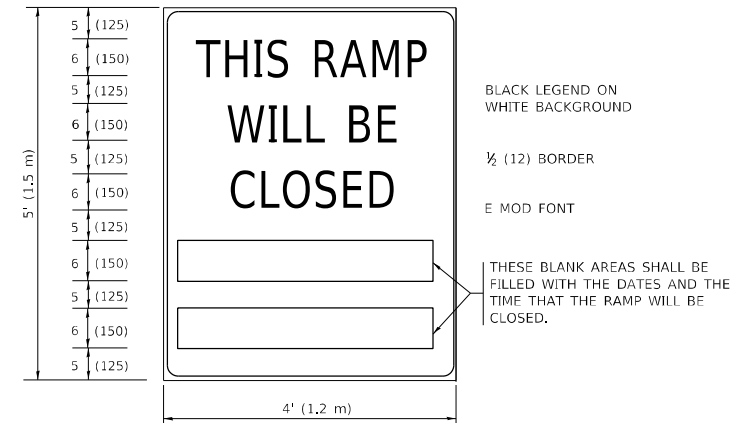
**RAMP CLOSURE ADVANCE WARNING SIGN**



BLACK LEGEND ON ORANGE BACKGROUND MOUNTED DIAGONALLY  
E MOD FONT  
1 (25) BORDER

THESE SIGNS ARE REQUIRED ON ALL THE EXIT GUIDE SIGNS FOR EXIT RAMPS THAT WILL BE CLOSED FOR MORE THAN FOUR (4) CONSECUTIVE DAYS.

**RAMP CLOSURE ADVANCE INFORMATION SIGN**



BLACK LEGEND ON WHITE BACKGROUND

1/2 (12) BORDER

E MOD FONT

THESE BLANK AREAS SHALL BE FILLED WITH THE DATES AND THE TIME THAT THE RAMP WILL BE CLOSED.

THESE SIGNS ARE REQUIRED ON BOTH SIDES OF THE RAMP, MINIMUM OF 1 WEEK IN ADVANCE OF THE CLOSURE.

THESE SIGNS SHALL BE FABRICATED AND PAID FOR ACCORDING TO THE TEMPORARY INFORMATION SIGNING SPECIAL PROVISION

**GENERAL NOTES:**

- ① CONES MAY BE SUBSTITUTED FOR DRUMS OR TYPE II BARRICADES DURING DAY OPERATIONS. CONES SHALL BE A MINIMUM OF 28 (700) HIGH.
- ② VERTICAL BARRICADES SHALL NOT BE USED FOR RAMP CLOSURES.
- ③ A FLAGGER SHALL BE POSITIONED AT EACH CLOSED RAMP THAT IS OPEN TO CONSTRUCTION VEHICLES, PRECEDED BY A W20-7 FLAGGER WARNING SIGN.
- ④ ALL ROUTE MARKERS AND TRAILBLAZER ASSEMBLIES WHICH DIRECT MOTORISTS TO A CLOSED ENTRANCE RAMP SHALL BE COVERED WHEN THE RAMP IS CLOSED FOR MORE THAN FOUR (4) DAYS.
- ⑤ THE SIGNING AND BARRICADING WHICH IS REQUIRED BY THIS DETAIL SHALL BE INCLUDED IN THE COST OF TRAFFIC CONTROL AND PROTECTION (EXPRESSWAYS).
- ⑥ AUTHORIZATION FROM THE DISTRICT'S BUREAU OF TRAFFIC IS REQUIRED FOR ALL RAMP CLOSURES.
- ⑦ THE RAMP CLOSURE ADVANCE INFORMATION SIGNS SHALL BE ERECTED IF THE CLOSURE TIME EXCEEDS TWENTY-FOUR (24) HOURS. ADDITIONAL ADVANCE WARNING SIGNS ON EXIT GUIDE SIGNING WILL BE REQUIRED FOR EXIT RAMP CLOSURES THAT EXCEED FOUR (4) DAYS IN LENGTH
- ⑧ ROAD CONSTRUCTION AHEAD SIGNS MAY BE OMITTED WHEN THIS DETAIL IS USED IN CONJUNCTION WITH OTHER TRAFFIC CONTROL THAT ALREADY INCLUDES A ROAD CONSTRUCTION AHEAD SIGN.
- ⑨ ARTERIAL ROAD CONSTRUCTION AHEAD SIGNS SHALL BE INSTALLED ON THE LEFT SIDE OF TRAFFIC IF THE MEDIAN IS MORE THAN 10 FT WIDE.

ALL DIMENSIONS ARE IN INCHES (MILLIMETERS) UNLESS OTHERWISE SHOWN.

MODEL: Defn1  
FILE NAME: p:\projects\paw\hwy.com\p11007\Documents\TBDT\_offices\Distrc: 1\Projects\0109923\COOD\paw\Design\Bk5\Std.dgn

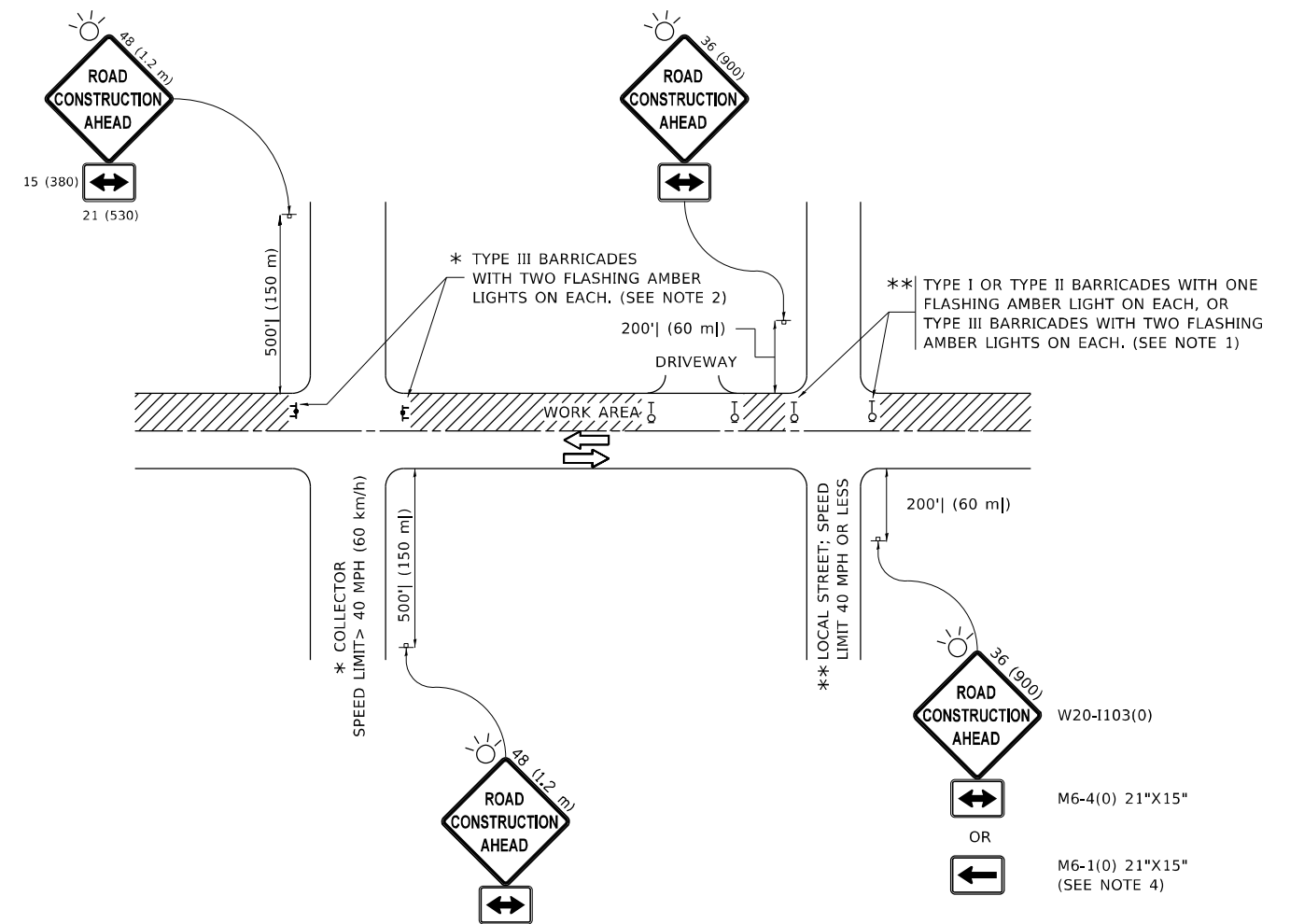
USER NAME = Omar.Aboalnadi	DESIGNED - D.W.S.	REVISED - S.P.B._01-07
PLOT SCALE = 100.0000 * / in.	DRAWN -	REVISED - S.P.B._12-09
PLOT DATE = 12/19/2022	CHECKED -	REVISED - M.D._06-13
	DATE - 02-83	REVISED - M.D._01-18

**STATE OF ILLINOIS  
DEPARTMENT OF TRANSPORTATION**

**ENTRANCE\_AND\_EXIT\_RAMP  
CLOSURE\_DETAILS**

SCALE: NONE SHEET 1 OF 1 SHEETS STA. TO STA.

F.A.U. RTE.	SECTION	COUNTY	TOTAL SHEETS	SHEET NO.
VAR.	IL 7 22 BP	COOK	27	22
<b>TC-08</b>		CONTRACT NO. 62U14		
		ILLINOIS FED. AID PROJECT		



**NOTES:**

- SIDE ROAD WITH A SPEED LIMIT OF 40 MPH (60 km/h) OR LESS AS SHOWN ON THE DRAWING AND AS DIRECTED BY THE ENGINEER:
  - ONE "ROAD CONSTRUCTION AHEAD" SIGN 36 x 36 (900x900) WITH A FLASHER MOUNTED ON IT APPROXIMATELY 200' (60 m) IN ADVANCE OF THE MAIN ROUTE.
  - THE CLOSED PORTION OF THE MAIN ROUTE SHALL BE PROTECTED BY BLOCKING WITH TYPE I, TYPE II OR TYPE III BARRICADES, 1/3 OF THE CROSS SECTION OF THE CLOSED PORTION.
- SIDE ROAD WITH A SPEED LIMIT GREATER THAN 40 MPH (60 km/h) AS SHOWN ON THE DRAWING AND AS DIRECTED BY THE ENGINEER:
  - ONE "ROAD CONSTRUCTION AHEAD" SIGN 48 x 48 (1.2 m x 1.2 m) WITH A FLASHER MOUNTED ON IT APPROXIMATELY 500' (150 m) IN ADVANCE OF THE MAIN ROUTE.
  - THE CLOSED PORTION OF THE MAIN ROUTE SHALL BE PROTECTED BY BLOCKING WITH TYPE III BARRICADES, 1/2 OF THE CROSS SECTION OF THE CLOSED PORTION.
- CONES MAY BE SUBSTITUTED FOR BARRICADES OR DRUMS AT HALF THE SPACING DURING DAY OPERATIONS. CONES SHALL BE A MINIMUM OF 28 (710) IN HEIGHT.
- WHEN THE SIDE ROAD LIES BETWEEN THE BEGINNING OF THE MAINLINE AND THE WORK ZONE, A SINGLE HEADED ARROW (M6-1) SHALL BE USED IN LIEU OF THE DOUBLE HEADED ARROW (M6-4).
- WHEN WORK IS BEING PERFORMED ON A SIDE ROAD OR DRIVEWAY, FOLLOW THE APPLICABLE STANDARD(S). THE DIRECTIONAL ARROW (M6-1 OR M6-4) SHALL BE COVERED OR REMOVED WHEN NO LONGER CONSISTENT WITH THE TRAFFIC CONTROL SET-UP.
- ADVANCE WARNING SIGNS ARE TO BE OMITTED ON DRIVEWAYS UNLESS OTHERWISE SPECIFIED IN THE PLANS OR BY THE ENGINEER.
- THE TRAFFIC CONTROL AND PROTECTION FOR SIDE ROADS, INTERSECTIONS, AND DRIVEWAYS SHALL BE INCLUDED IN THE COST OF SPECIFIED TRAFFIC CONTROL STANDARDS OR ITEMS.

All dimensions are in inches (millimeters) unless otherwise shown.

MODEL: Defaul... FILE: h4466... \\blsdc-cis.bentley.com\project\DOT\Documents\DOT\Office\Drinfet\_1\Project\100923\CADD\1013\1013\Drif55c.dgn

USER NAME = Omar.Aboonadie	DESIGNED - L.H.A.	REVISED - A. HOUSEH 10-15-96
	DRAWN -	REVISED - T. RAMMACHER 01-06-00
PLOT SCALE = 100,0000 ' / in.	CHECKED -	REVISED - A. SCHUETZE 07-01-13
PLOT DATE = 12/19/2022	DATE - 06-89	REVISED - A. SCHUETZE 09-15-16

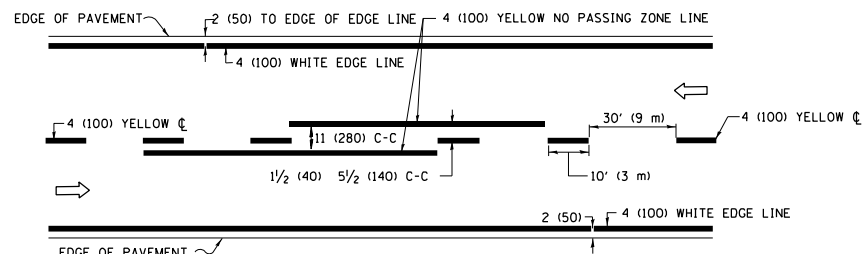
**STATE OF ILLINOIS  
DEPARTMENT OF TRANSPORTATION**

**TRAFFIC CONTROL AND PROTECTION FOR  
SIDE ROADS, INTERSECTIONS, AND DRIVEWAYS**

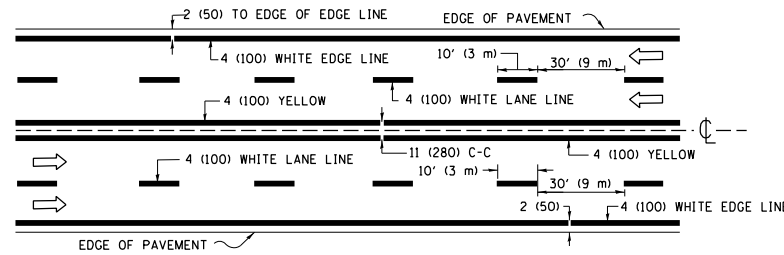
SCALE: NONE SHEET 1 OF 1 SHEETS STA. TO STA.

F.A.U. RTE.	SECTION	COUNTY	TOTAL SHEETS	SHEET NO.
VAR.	IL 7 22 BP	COOK	27	23
<b>TC-10</b>		CONTRACT NO. 62U14		
ILLINOIS FED. AID PROJECT				

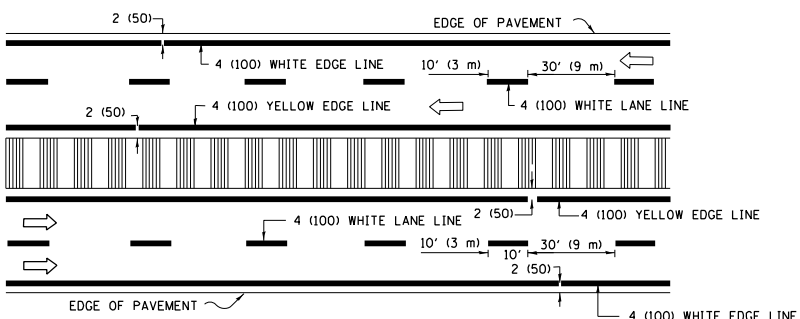




**2-LANE ROADWAY**

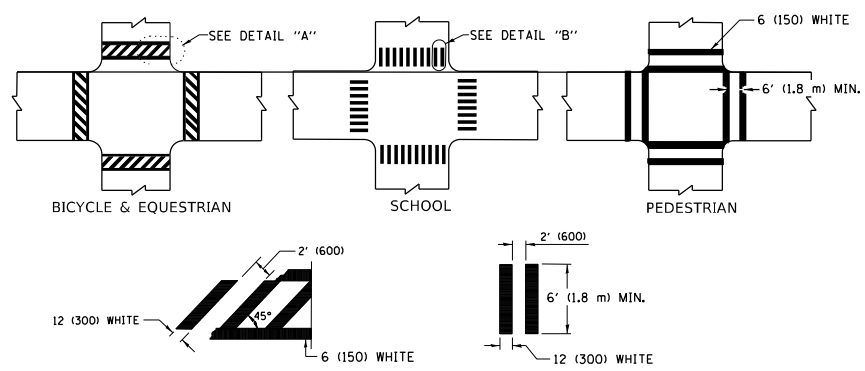


**MULTI-LANE UNDIVIDED**



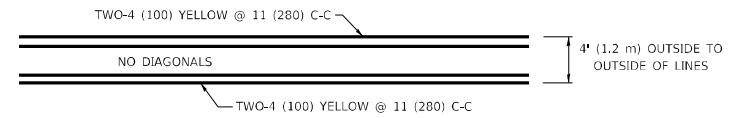
**MULTI-LANE DIVIDED WITH MEDIAN**

**TYPICAL LANE AND EDGE LINE MARKING**

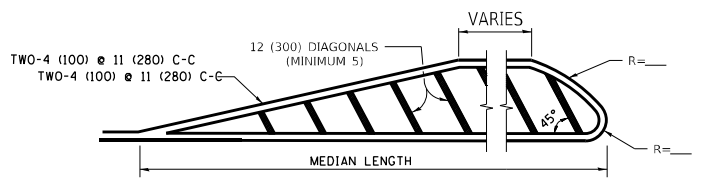


**TYPICAL CROSSWALK MARKING**

\* MARKINGS SHALL BE INSTALLED PARALLEL TO THE CENTERLINE OF THE ROAD WHICH IT CROSSES

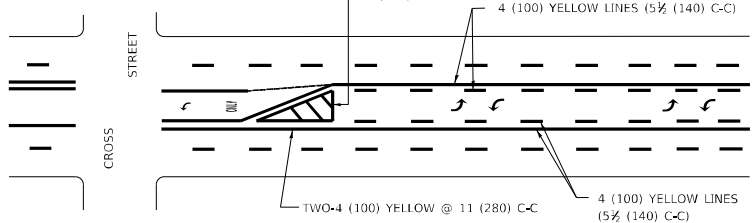


**4' (1.2 m) WIDE MEDIANS ONLY**

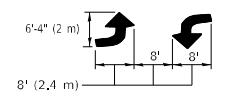


**MEDIANS OVER 4' (1.2 m) WIDE**

DIAGONAL LINE SPACING: 50' (15 m) C-C (LESS THAN 30MPH (50 km/h))  
75' (25 m) C-C 30MPH (50 km/h) TO 45MPH (70 km/h)  
150' (45 m) C-C (MORE THAN 45MPH (70 km/h))

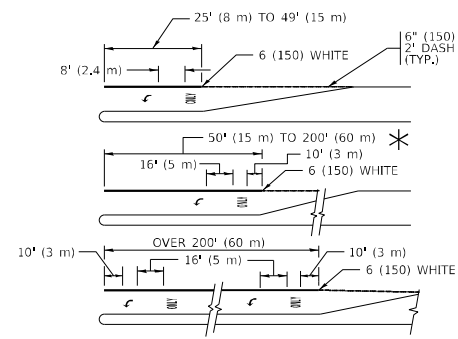


A MINIMUM OF TWO PAIRS OF TURN ARROWS SHALL BE USED, WHITE IN COLOR. ADDITIONAL PAIRS SHALL BE PLACED AT 200' (60 m) TO 300' (90 m) INTERVALS.



**MEDIAN WITH TWO-WAY LEFT TURN LANE**

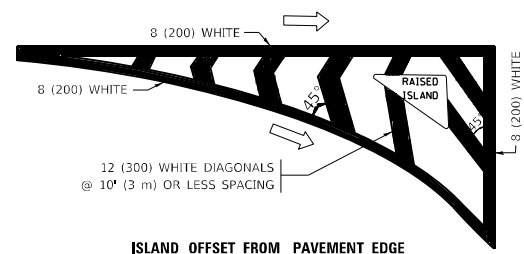
**TYPICAL PAINTED MEDIAN MARKING**



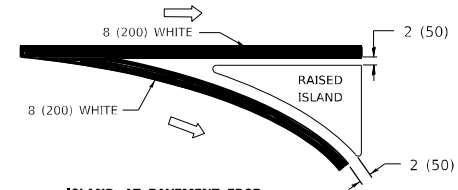
FULL SIZE LETTERS 8' (2.4 m) AND ARROWS SHALL BE USED.  
AREA = 15.6 SQ. FT. (1.5 m<sup>2</sup>) ONLY AREA = 20.8 SQ. FT. (1.9 m<sup>2</sup>)  
TURN LANES IN EXCESS OF 400' (120 m) IN LENGTH MAY HAVE AN ADDITIONAL SET OF ARROW - "ONLY" INSTALLED MIDWAY BETWEEN THE OTHER TWO SETS OF ARROW - "ONLY".

**TYPICAL LEFT (OR RIGHT) TURN LANE**

**TYPICAL TURN LANE MARKING**

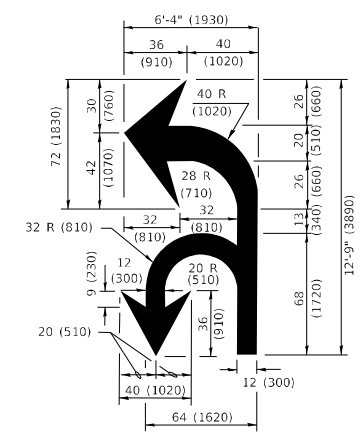


**ISLAND OFFSET FROM PAVEMENT EDGE**

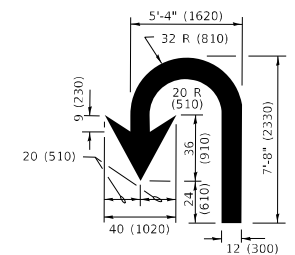


**ISLAND AT PAVEMENT EDGE**

**TYPICAL ISLAND MARKING**



**COMBINATION LEFT AND U-TURN**



**U-TURN**

**LANE REDUCTION TRANSITION**

\* LANE REDUCTION ARROWS REQUIRED AT SPEEDS OF 45 MPH OR GREATER OR WHEN SPECIFIED IN PLANS.

D(FT)	SPEED LIMIT
345	30
425	35
500	40
580	45
665	50
750	55

TYPE OF MARKING	WIDTH OF LINE	PATTERN	COLOR	SPACING / REMARKS
CENTERLINE ON 2 LANE PAVEMENT	4 (100)	SKIP-DASH	YELLOW	10' (3 m) LINE WITH 30' (9 m) SPACE
CENTERLINE ON MULTI-LANE UNDIVIDED PAVEMENT	2 @ 4 (100)	SOLID	YELLOW	11 (280) C-C
NO PASSING ZONE LINES: FOR ONE DIRECTION FOR BOTH DIRECTIONS	4 (100) 2 @ 4 (100)	SOLID SOLID	YELLOW YELLOW	5 1/2 (140) C-C FROM SKIP-DASH CENTERLINE 11 (280) C-C OMIT SKIP-DASH CENTERLINE BETWEEN
LANE LINES	4 (100) 5 (125) ON FREEWAYS	SKIP-DASH SKIP-DASH	WHITE WHITE	10' (3 m) LINE WITH 30' (9 m) SPACE
DOTTED LINES (EXTENSIONS OF CENTER, LANE OR TURN LANE MARKINGS)	SAME AS LINE BEING EXTENDED	SKIP-DASH	SAME AS LINE BEING EXTENDED	2' (600) LINE WITH 6' (1.8 m) SPACE
EDGE LINES	4 (100)	SOLID	YELLOW-LEFT WHITE-RIGHT	OUTLINE MEDIANS IN YELLOW
TURN LANE MARKINGS	6 (150) LINE; FULL SIZE LETTERS & SYMBOLS (8' (2.4m))	SOLID	WHITE	SEE TYPICAL TURN LANE MARKING DETAIL
TWO WAY LEFT TURN MARKING	2 @ 4 (100) EACH DIRECTION 8' (2.4m) LEFT ARROW	SKIP-DASH AND SOLID IN PAIRS	YELLOW WHITE	10' (3 m) LINE WITH 30' (9 m) SPACE FOR SKIP-DASH; 5 1/2 (140) C-C BETWEEN SOLID LINE AND SKIP-DASH LINE SEE TYPICAL TWO-WAY LEFT TURN MARKING DETAIL
CROSSWALK LINES (PEDESTRIAN) A. DIAGONALS (BIKE & EQUESTRIAN) B. LONGITUDINAL BARS (SCHOOL)	2 @ 6 (150) 12 (300) @ 45° 12 (300) @ 90°	SOLID SOLID SOLID	WHITE WHITE WHITE	NOT LESS THAN 6' (1.8 m) APART 2' (600) APART 2' (600) APART SEE TYPICAL CROSSWALK MARKING DETAILS.
STOP LINES	24 (600)	SOLID	WHITE	PLACE 4' (1.2 m) IN ADVANCE OF AND PARALLEL TO CROSSWALK, IF PRESENT. OTHERWISE, PLACE AT DESIRED STOPPING POINT, PARALLEL TO CROSSROAD CENTERLINE, WHERE POSSIBLE
PAINTED MEDIANS	2 @ 4 (100) WITH 12 (300) DIAGONALS @ 45° NO DIAGONALS USED FOR 4' (1.2 m) WIDE MEDIANS	SOLID	YELLOW: TWO WAY TRAFFIC WHITE: ONE WAY TRAFFIC	11 (280) C-C FOR THE DOUBLE LINE SEE TYPICAL PAINTED MEDIAN MARKING.
GORE MARKING AND CHANNELIZING LINES	8 (200) WITH 12 (300) DIAGONALS @ 45°	SOLID	WHITE	DIAGONALS: 15' (4.5 m) C-C (LESS THAN 30MPH (50 km/h)) 20' (6 m) C-C 30MPH (50 km/h) TO 45MPH (70 km/h) 30' (9 m) C-C (OVER 45MPH (70 km/h))
RAILROAD CROSSING	24 (600) TRANSVERSE LINES: "RR" IS 6' (1.8 m) LETTERS: 16 (400) LINE FOR "X"	SOLID	WHITE	SEE STATE STANDARD 780001 AREA OF: "R"=3.6 SQ. FT. (0.33 m <sup>2</sup> ) EACH "X"=54.0 SQ. FT. (5.0 m <sup>2</sup> )
SHOULDER DIAGONALS (REQUIRED FOR SHOULDERS ≥ 8')	12 (300) @ 45°	SOLID	WHITE - RIGHT YELLOW - LEFT	50' (15 m) C-C (LESS THAN 30MPH (50 km/h)) 75' (25 m) C-C (30 MPH (50 km/h) TO 45MPH (70 km/h)) 150' (45 m) C-C (OVER 45MPH (70 km/h))
U TURN ARROW	SEE DETAIL	SOLID	WHITE	16.3 SF
2 ARROW COMBINATION LEFT AND U TURN	SEE DETAIL	SOLID	WHITE	30.4 SF

FOR FURTHER DETAILS ON PAVEMENT MARKING REFER TO STANDARD SPECIFICATIONS FOR ROAD AND BRIDGE CONSTRUCTION AND STATE STANDARD 780001.

All dimensions are in inches (millimeters) unless otherwise shown.

MODEL: D:\m\h\... FILE NAME: p:\m\h\... PROJECTS\110923\CADD\data\Design\Dist\Std...

USER NAME = Omar.Aboalnadin	DESIGNED - EVERS	REVISED - C. JUCIUS 09-09-09
DRAWN -	REVISOR - C. JUCIUS 07-01-13	REVISED - C. JUCIUS 12-21-15
PLOT SCALE = 100,0060' / in.	CHECKED -	REVISED - C. JUCIUS 04-12-16
PLOT DATE = 12/19/2022	DATE - 03-19-90	

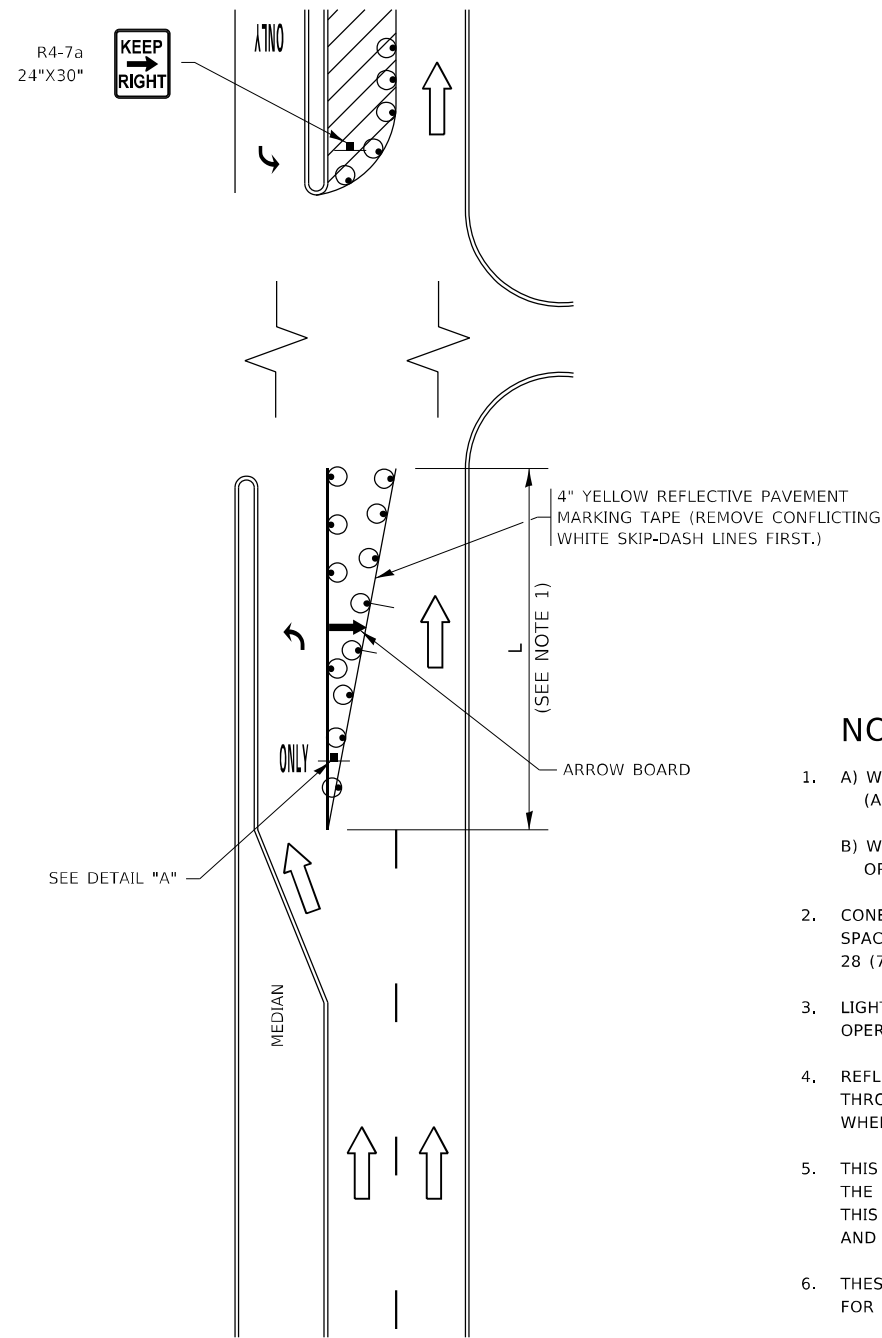
**STATE OF ILLINOIS DEPARTMENT OF TRANSPORTATION**

**DISTRICT ONE TYPICAL PAVEMENT MARKINGS**

SCALE: NONE SHEET 1 OF 2 SHEETS STA. TO STA.

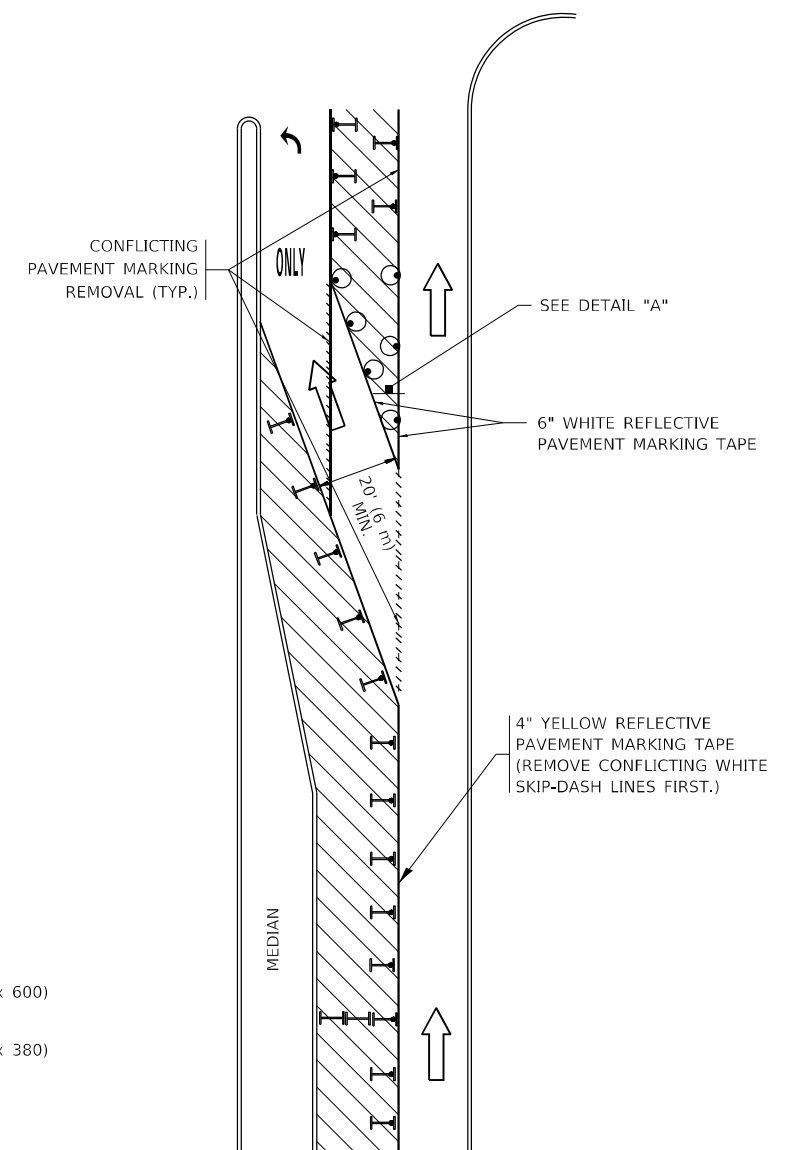
F.A.U. RTE.	SECTION	COUNTY	TOTAL SHEETS	SHEET NO.
VAR.	IL 7 22 BP	COOK	27	24
<b>TC-13</b>		CONTRACT NO. 62U14		
		ILLINOIS FED. AID PROJECT		

# TURN BAY ENTRANCE AT START OF LANE CLOSURE TAPER



**FIGURE 1**

# TURN BAY ENTRANCE WITHIN A LANE CLOSURE



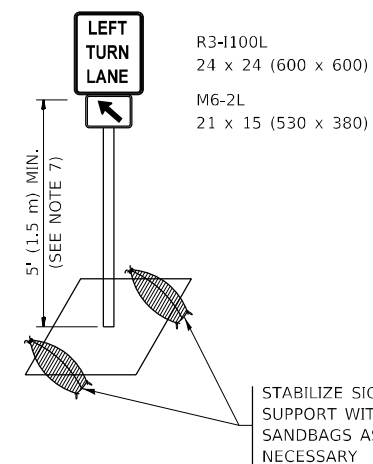
**FIGURE 2**

### LEGEND

- WORK AREA
- LANE OPEN TO TRAFFIC
- ARROW BOARD
- TYPE I OR II BARRICADE OR DRUM WITH STEADY BURN LIGHT
- DRUM WITH STEADY BURN LIGHT
- SIGN ASSEMBLY
- TYPE I OR II CHECK BARRICADE WITH FLASHING LIGHT

### NOTES:

1. A) WHEN "L" IS  $\leq$  THE STORAGE LENGTH OF THE TURN LANE (AS SHOWN IN FIG. 1), USE FIGURE 1.  
B) WHEN "L" IS  $>$  THE STORAGE LENGTH OF THE TURN LANE OR THE TURN LANE IS WITHIN THE LANE CLOSURE, USE FIGURE 2.
2. CONES MAY BE SUBSTITUTED FOR BARRICADES OR DRUMS AT HALF THE SPACING DURING DAY OPERATIONS. CONES SHALL BE A MINIMUM OF 28 (710) IN HEIGHT.
3. LIGHTS WILL NOT BE REQUIRED ON BARRICADES OR DRUMS FOR DAY OPERATIONS. ALL LIGHTS SHALL BE MONODIRECTIONAL.
4. REFLECTIVE TEMPORARY PAVEMENT MARKINGS SHALL BE PLACED THROUGHOUT THE BARRICADED AREAS OF EACH TURN BAY AS SHOWN WHERE THE CLOSURE TIME IS GREATER THAN FOURTEEN (14) DAYS.
5. THIS APPLICATION ALSO APPLIES WHEN WORK IS BEING PERFORMED IN THE RIGHT LANE(S) AND THE RIGHT TURN BAY IS TO REMAIN OPEN. UNDER THIS CONDITION, "RIGHT TURN LANE" R3-1100R 24 x 24 (600 x 600) AND M6-2R 21 x 15 (530 x 380) SHALL BE USED.
6. THESE CONTROLS SHALL SUPPLEMENT MAINLINE TRAFFIC CONTROL FOR LANE CLOSURES.
7. THE SIGNS SHALL BE MOUNTED ABOVE THE BARRICADES/DRUMS ON SEPARATE SIGN SUPPORTS THAT MEET NCHRP 350 OR MASH REQUIREMENTS.
8. TRAFFIC CONTROL AND PROTECTION AT TURN BAYS (TO REMAIN OPEN TO TRAFFIC) SHALL BE INCLUDED IN THE COST OF SPECIFIED TRAFFIC CONTROL STANDARDS OR ITEMS.



**DETAIL A**

All dimensions are in inches (millimeters) unless otherwise shown.

MODEL: D:\data\... FILE NAME: pav\illinois\conventioy.com-P\WIDOT\Documents\DOT Office\District: 1\Projects\109923\CAD\Draws\Design\DistStru.dgn

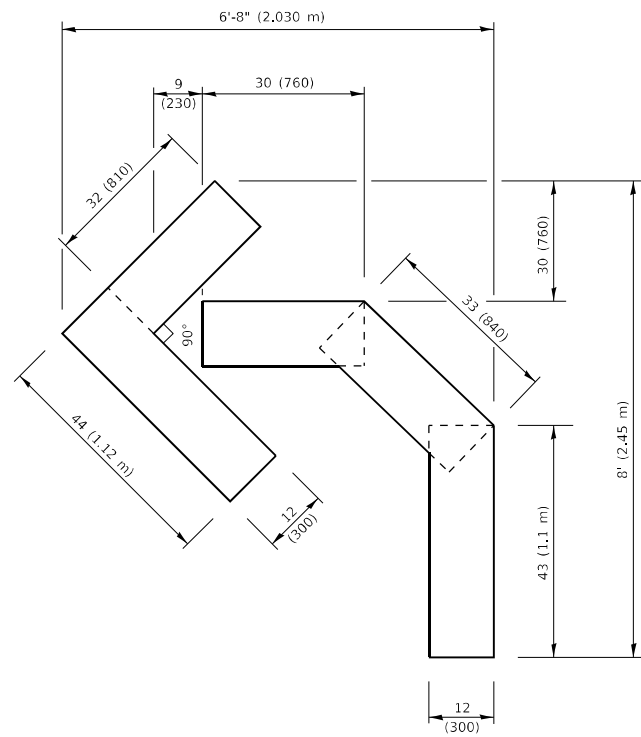
USER NAME = Omar.Aboalnadi	DESIGNED - T. RAMMACHER 09-08-94	REVISED - R. BORO 09-14-09
	DRAWN - A. HOUSEH 11-07-95	REVISED - A. SCHUETZE 07-01-13
PLOT SCALE = 100,0060' / in.	CHECKED - A. HOUSEH 10-12-96	REVISED - A. SCHUETZE 09-15-16
PLOT DATE = 12/19/2022	DATE - T. RAMMACHER 01-06-00	REVISED -

**STATE OF ILLINOIS  
DEPARTMENT OF TRANSPORTATION**

**TRAFFIC CONTROL AND PROTECTION AT TURN BAYS  
(TO REMAIN OPEN TO TRAFFIC)**

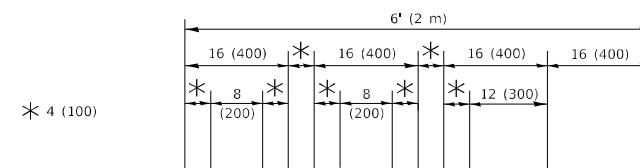
SCALE: NONE SHEET 1 OF 1 SHEETS STA. TO STA.

F.A.J. RTE.	SECTION	COUNTY	TOTAL SHEETS	SHEET NO.
VAR.	IL 7 22 BP	COOK	27	25
TC-14		CONTRACT NO. 62U14		
ILLINOIS FED. AID PROJECT				



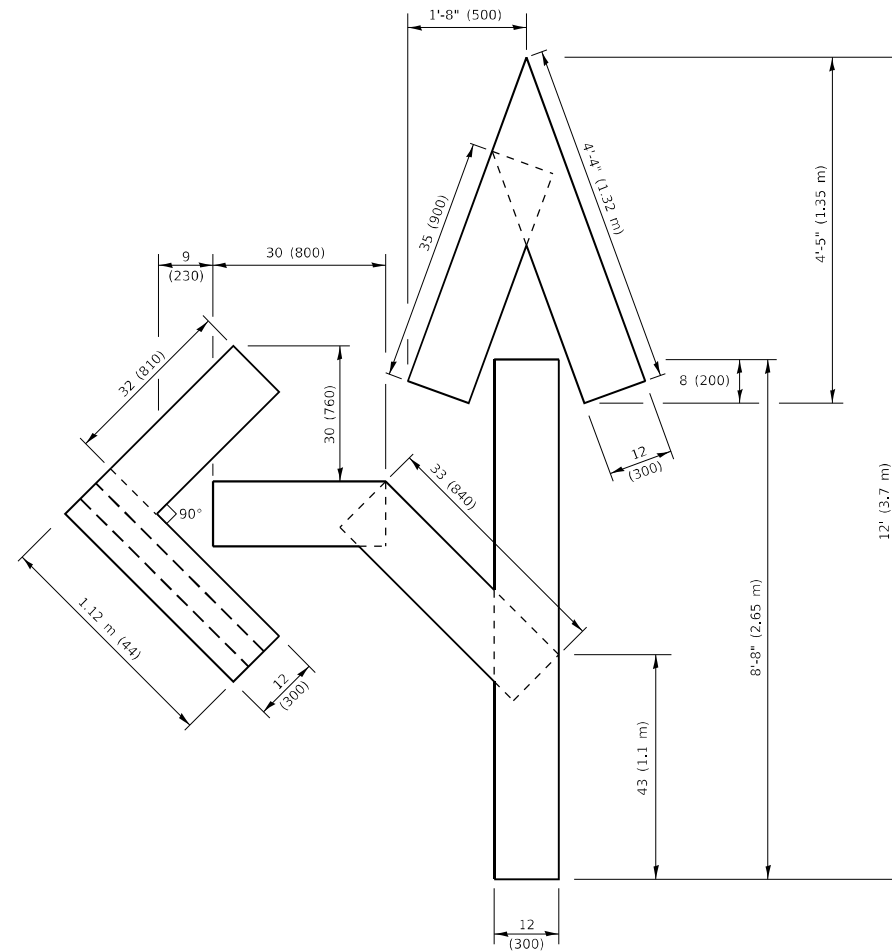
**QUANTITY**

4 (100) LINE = 45.5 ft. (13.9 m)  
15.2 sq. ft. (1.41 sq. m)



**QUANTITY**

4 (100) LINE = 64.1 ft. (19.5 m)  
21.4 sq. ft. (1.99 sq. m)

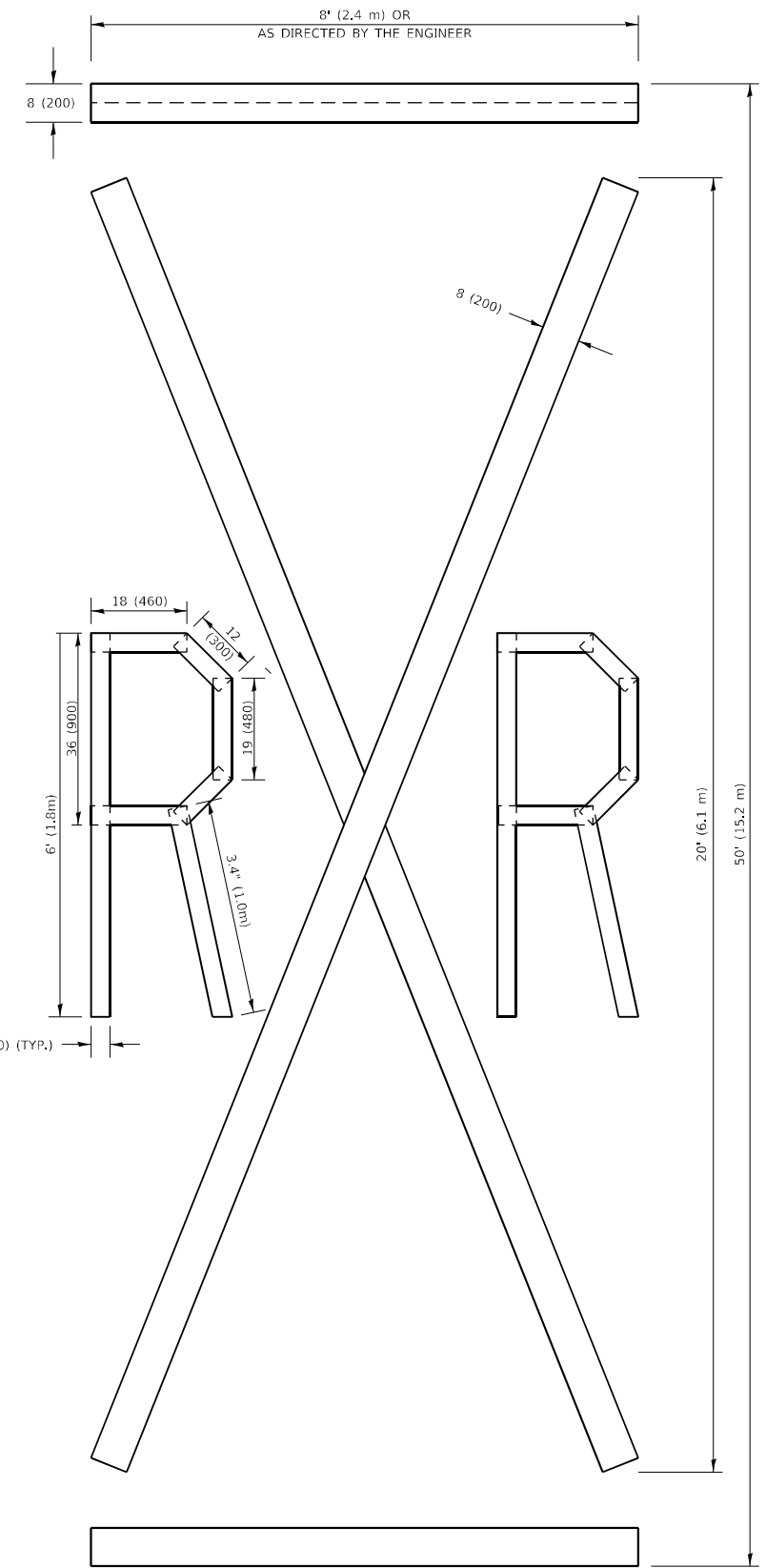


**QUANTITY**

4 (100) LINE = 82.5 ft. (25.1 m)  
27.5 sq. ft. (2.53 sq. m)

**NOTE:**

ALL QUANTITIES OF PLACEMENT ARE REPRESENTED IN LINEAR FEET OF 4" LINES TO MATCH THE 4" TEMPORARY TAPE PAY ITEM AND REPRESENTS THE TOTAL QUANTITY OF 4" TAPE REQUIRED.



**QUANTITY**

4 (100) LINE = 225.9 ft. (68.9 m)  
75.3 sq. ft. (6.99 sq. m)

All dimensions are in inches (millimeters) unless otherwise shown.

MODEL: Default  
 FILE NAME: P:\ilroad\pav\beville\com\PHUDOT\Documents\DOT Office\Bentley\1\Project\1009231\CD\Drawings\Design\Bentley.dgn

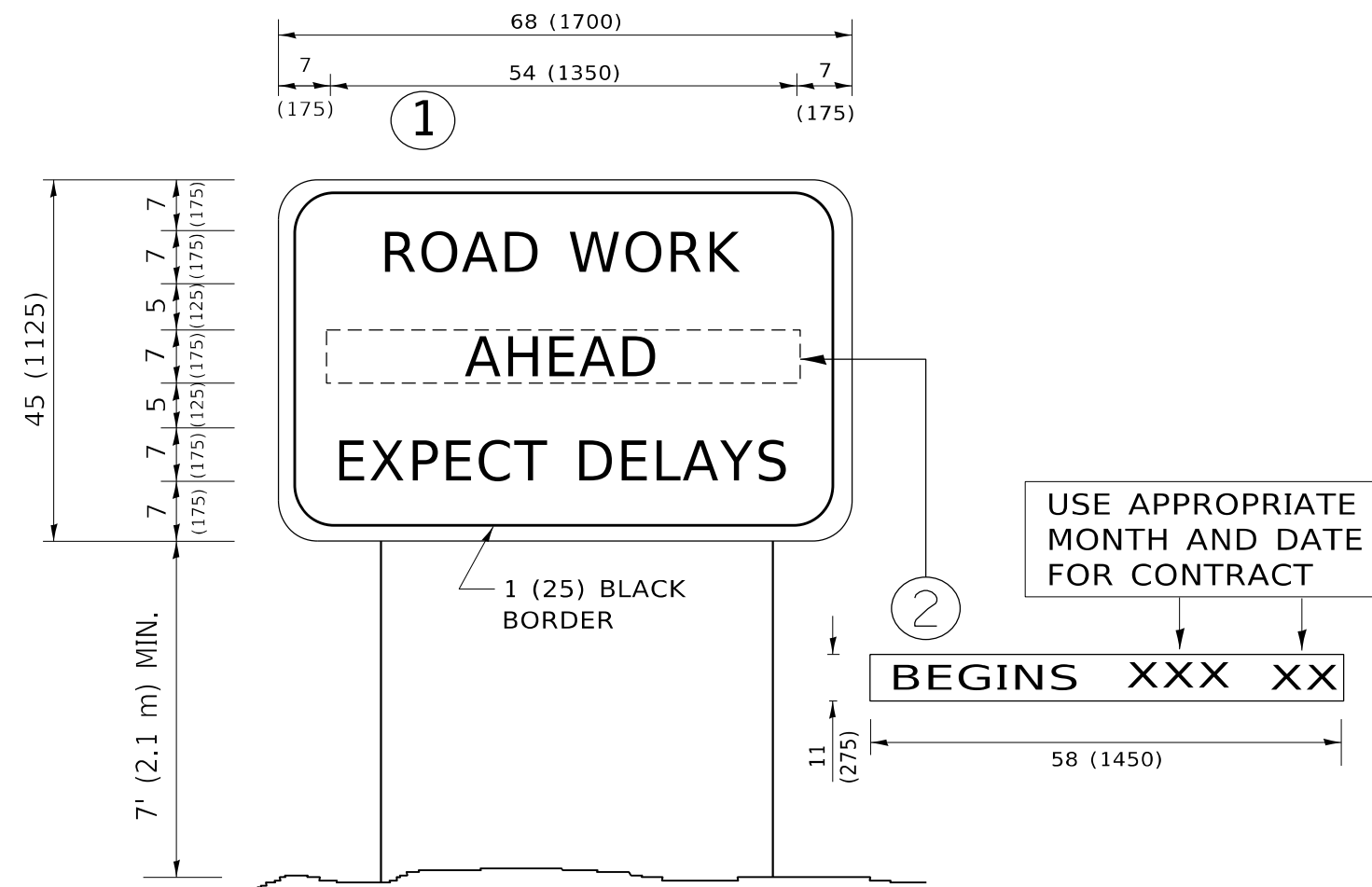
USER NAME = Omar.AboalNadie	DESIGNED -	REVISED - T. RAMMACHER 03-02-98
PLOT SCALE = 100.0528 ' / in.	DRAWN -	REVISED - E. GOMEZ 08-28-00
PLOT DATE = 12/19/2022	CHECKED -	REVISED - E. GOMEZ 08-28-00
	DATE - 09-18-94	REVISED - A. SCHUETZE 09-15-16

**STATE OF ILLINOIS  
DEPARTMENT OF TRANSPORTATION**

**SHORT TERM PAVEMENT MARKING LETTERS AND SYMBOLS**

SCALE: NONE SHEET 1 OF 1 SHEETS STA. TO STA.

F.A.U. RTE.	SECTION	COUNTY	TOTAL SHEETS	SHEET NO.
VAR.	IL 7 22 BP	COOK	27	26
<b>TC-16</b>		CONTRACT NO.	62U14	
ILLINOIS FED. AID PROJECT				



**NOTES:**

1. USE BLACK LETTERING ON ORANGE BACKGROUND.
2. ERECT SIGNS IN ADVANCE OF THE LOCATION FOR THE "ROAD CONSTRUCTION AHEAD" SIGN AT LOCATIONS AS DIRECTED BY THE ENGINEER.
3. ERECT SIGN ① WITH INSTALLED PANEL ② ONE WEEK PRIOR TO THE START OF CONSTRUCTION.
4. REMOVE PANEL ② SOON AFTER THE START OF CONSTRUCTION.
5. SEE SPECIAL PROVISION FOR "TEMPORARY INFORMATION SIGNING" FOR ADDITIONAL INFORMATION.
6. ONE SIGN ASSEMBLY EQUALS 25.70 SQ. FT. (2.3 SQ. M.)
7. SHALL BE PAID FOR AS TEMPORARY INFORMATION SIGNING.

ALL DIMENSIONS ARE IN INCHES (MILLIMETERS) UNLESS OTHERWISE SHOWN.

MODEL: D:\data\...  
 FILE: 12192022...  
 I:\Projects\100923\CADD\data\Design\Bk5R1.com

USER NAME = Omar.Aboalnadie	DESIGNED -	REVISED - R. MIRS 09-15-97
	DRAWN -	REVISED - R. MIRS 12-11-97
PLOT SCALE = 100.0528 * / in.	CHECKED -	REVISED - T. RAMMACHER 02-02-99
PLOT DATE = 12/19/2022	DATE -	REVISED - C. JUCIUS 01-31-07

**STATE OF ILLINOIS  
DEPARTMENT OF TRANSPORTATION**

**ARTERIAL ROAD  
INFORMATION SIGN**

SCALE: NONE SHEET 1 OF 1 SHEETS STA. TO STA.

F.A.U. RTE.	SECTION	COUNTY	TOTAL SHEETS	SHEET NO.
VAR.	IL 7 22 BP	COOK	27	27
TC-22			CONTRACT NO. 62U14	
ILLINOIS FED. AID PROJECT				