

STATE OF ILLINOIS
DEPARTMENT OF TRANSPORTATION

F.A.U. RTE.	SECTION	COUNTY	TOTAL SHEETS	SHEET NO.
VAR.	2020-191-R5	COOK LAKE	29	1
		ILLINOIS	CONTRACT NO. 62M65	

D-91-589-20



LOCATION OF SECTION INDICATED THUS: ———

PROPOSED HIGHWAY PLANS

**LOCATION 1: FAU ROUTE 2553: BARRINGTON ROAD
STONE CANYON CIRCLE TO FARMINGTON DRIVE**
**LOCATION 2: FAU 1270: LAKE COOK ROAD
EAST OF WALLINGFORD LANE**
SECTION: 2020-191-R5
PROJECT: STP-Q8YE(452)
DESIGNED OVERLAY, DRAINAGE
COOK AND LAKE COUNTY
C-91-390-20

FOR INDEX OF SHEETS, SEE SHEET NO. 2

THE IMPROVEMENT IS LOCATED
IN THE VILLAGES OF INVERNESS,
BARRINGTON, DEER PARK, SOUTH
BARRINGTON, BARRINGTON HILLS

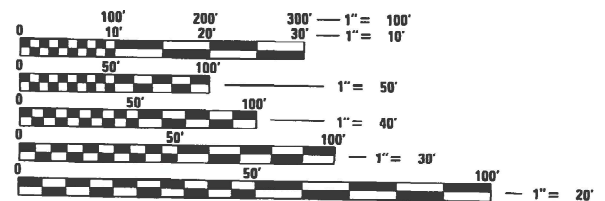
TRAFFIC DATA:

BARRINGTON RD:

PROJECT BEGIN TO PROJECT END:
ADT (2018) = 15,900
SPEED LIMIT = 55 MPH

LAKE COOK RD:

PROJECT BEGIN TO PROJECT END:
ADT (2018) = 13,800
SPEED LIMIT = 45 MPH

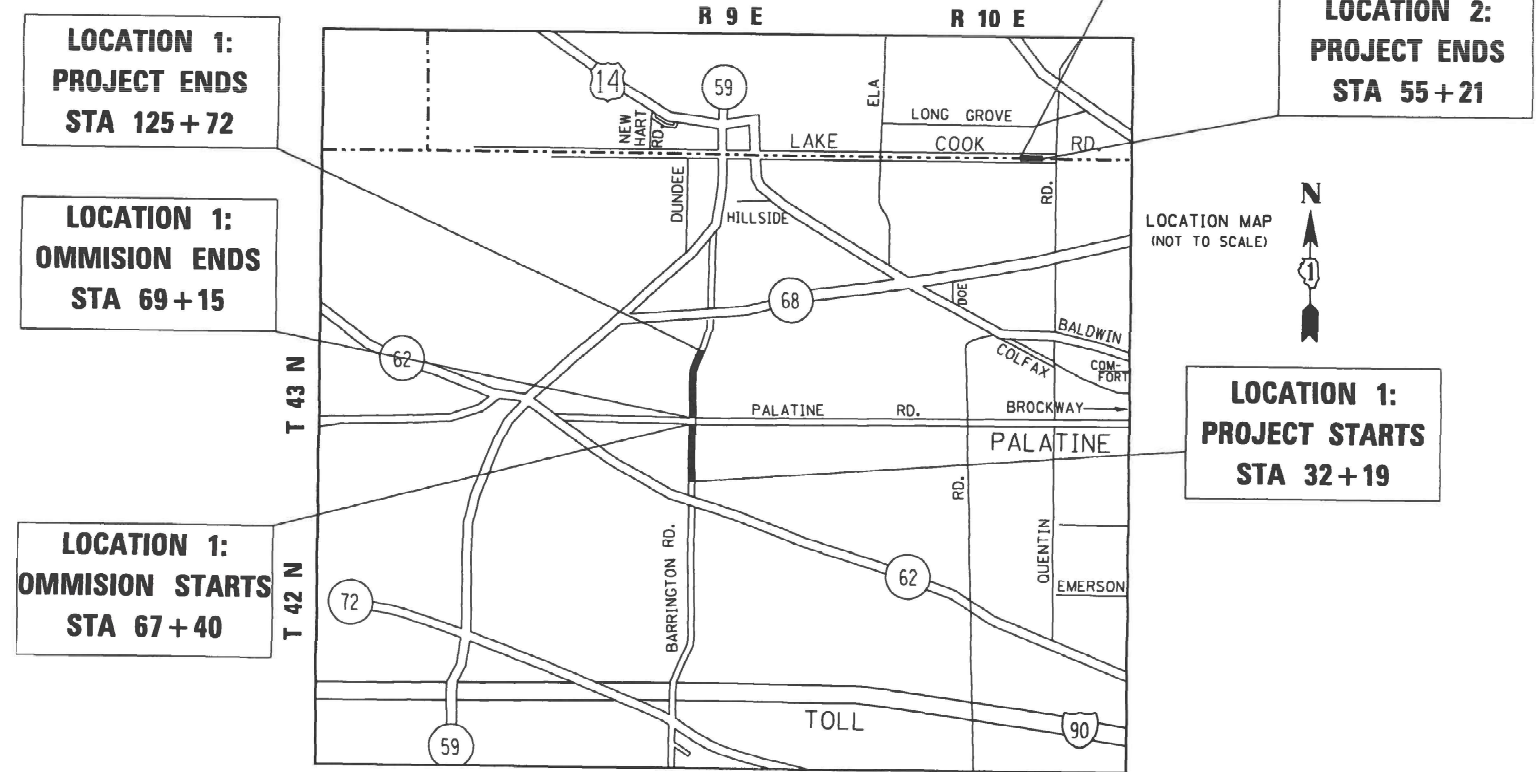


FULL SIZE PLANS HAVE BEEN PREPARED USING STANDARD
ENGINEERING SCALES. REDUCED SIZED PLANS WILL NOT
CONFORM TO STANDARD SCALES. IN MAKING MEASUREMENTS
ON REDUCED PLANS, THE ABOVE SCALES MAY BE USED.

J.U.L.I.E.
JOINT UTILITY LOCATION INFORMATION FOR EXCAVATION
1-800-892-0123
OR 811

PROJECT ENGINEER: DAN WILGREEN, P.E (847) 705-4240
PROJECT MANAGER: FAWAD AQUEEL, P.E.

CONTRACT NO. 62M65



BARRINGTON TOWNSHIP
LOCATION 1: GROSS LENGTH = 9,353 FEET = 1.77 MILES
NET LENGTH = 9,178 FEET = 1.74 MILES
OMMISION = 175 FEET = .033 MILES
LOCATION 2: GROSS AND NET LENGTH = 366 FT = 0.07 MILES

STATE OF ILLINOIS
DEPARTMENT OF TRANSPORTATION

SUBMITTED DECEMBER 15 20 22
Jose Pina REGIONAL ENGINEER
February 3, 2023
Scott A. Etkin
ENGINEER OF DESIGN AND ENVIRONMENT
February 3, 2023
Stephen M. Sanna
DIRECTOR OF HIGHWAYS PROJECT IMPLEMENTATION

PRINTED BY THE AUTHORITY
OF THE STATE OF ILLINOIS

INDEX OF SHEETS

SHEET NO.	DESCRIPTION
1	COVER SHEET
2-3	INDEX OF SHEETS, HIGHWAY STANDARDS, AND GENERAL NOTES
4-7	SUMMARY OF QUANTITIES
8	BARRINGTON RD: TYPICAL SECTION
9-12	BARRINGTON RD: ROADWAY AND PAVEMENT MARKING PLANS
13	DETECTOR LOOPS
14	LAKE-COOK ROAD: ALIGNMENT, TIES, AND BENCHMARKS
15	LAKE-COOK ROAD: ROADWAY PLAN AND PROFILE
16	LAKE-COOK ROAD: DRAINAGE PLAN AND PROFILE
17	LAKE-COOK ROAD: EARTHWORK SCHEDULE
18	DETAILS FOR FRAMES AND LIDS ADJUSTMENT WITH MILLING (BD-08)
19	PAVEMENT PATCHING FOR HMA SURFACED PAVEMENT (BD-22)
20	CURB OR CURB AND GUTTER REMOVAL AND REPLACEMENT (BD-24)
21	BUTT JOINT AND HMA TAPER DETAILS (BD-32)
22	TRAFFIC CONTROL AND PROTECTION FOR SIDE ROADS, INTERSECTIONS, AND DRIVEWAYS (TC-10)
23	TYPICAL APPLICATIONS FOR RAISED REFLECTIVE PAVEMENT MARKERS (TC-11)
24	DISTRICT ONE TYPICAL PAVEMENT MARKINGS (TC-13)
25	TRAFFIC CONTROL AND PROTECTION AT TURN BAYS (TC-14)
26	SHORT TERM PAVEMENT MARKING LETTERS AND SYMBOLS (TC-16)
27	ARTERIAL ROAD INFORMATION SIGN (TC-22)
28-29	CROSS SECTIONS FOR LAKE-COOK ROAD

HIGHWAY STANDARDS

STANDARD NO.	DESCRIPTION
000001-08	STANDARD SYMBOLS, ABBREVIATIONS AND PATTERNS
280001-07	TEMPORARY EROSION CONTROL SYSTEMS
420001-10	PAVEMENT JOINTS
420701-03	PAVEMENT WELDED WIRE REINFORCEMENT
442201-03	CLASS C AND D PATCHES
542001-06	CONCRETE END SECTIONS FOR PIPE CULVERTS 15" (375 MM) THRU 84" (2100 MM) DIA
542501-02	INLET BOX TYPE 24 (600) A
602402-03	PRECAST MANHOLE TYPE A 5' (1.52 M) DIAMETER
602601-06	PRECAST REINFORCED CONCRETE FLAT TOP SLAB
602701-02	MANHOLE STEPS
630301-09	SHOULDER WIDENING FOR TYPE 1 (SPECIAL) GUARDRAIL TERMINALS
604001-05	FRAMES AND LIDS TYPE 1
606001-08	CONCRETE CURB TYPE B AND COMBINATION CONCRETE CURB AND GUTTER
701001-02	OFF-ROAD OPERATIONS, 2L, 2W, MORE THAN 15' (4.5 M) AWAY
701006-05	OFF-RD OPERATIONS, 2L, 2W, 15' (4.5 M) TO 24" (600 MM) FROM PAVEMENT EDGE
701011-04	OFF-RD MOVING OPERATIONS 2L, 2W, DAY ONLY
701101-05	OFF-RD MOVING OPERATIONS, MULTILANE 15' TO 24" FROM PAVEMENT
701301-04	LANE CLOSURE, 2L, 2W, SHORT TIME OPERATIONS
701306-04	LANE CLOSURE, 2L, 2W, SLOW MOVING OPERATIONS DAY, FOR SPEEDS >= 45 MPH
701311-03	LANE CLOSURE 2L, 2W MOVING OPERATIONS - DAY ONLY
701336-07	LANE CLOSURE 2L, 2W WORK IN SERIES, FOR SPEEDS >=45 MPH
701426-09	LANE CLOSURE, MULTILANE, INTERMITTENT OR MOVING OPER., FOR SPEEDS >= 45 MPH
701501-06	URBAN LANE CLOSURE 2L, 2W, UNDIVIDED
701502-09	URBAN LANE CLOSURE, 2L, 2W, WITH BIDIRECTIONAL LEFT TURN LANE
701606-10	URBAN SINGLE LANE CLOSURE MULTILANE, 2W WITH MOUNTABLE MEDIAN
701701-10	URBAN LANE CLOSURE, MULTILANE INTERSECTION
701801-06	SIDEWALK, CORNER OR CROSSWALK CLOSURE
701901-08	TRAFFIC CONTROL DEVICES
780001-05	TYPICAL PAVEMENT MARKINGS

GENERAL NOTES

- BEFORE STARTING ANY EXCAVATION, THE CONTRACTOR SHALL CALL "J.U.L.I.E." AT (800) 892-0123 OR 811 FOR FIELD LOCATIONS OF BURIED ELECTRIC, TELEPHONE AND GAS UTILITIES. 48 HOUR NOTIFICATION IS REQUIRED.
- THE CONTRACTOR SHALL COORDINATE CONSTRUCTION ACTIVITIES WITH UTILITY COMPANIES AND THE VILLAGES OF SOUTH BARRINGTON, DEER PARK AND INVERNESS
- THE CONTRACTOR SHALL CONTACT THE DISTRICT ONE TRAFFIC CONTROL SUPERVISOR AT KAPLANA.KANNAN-HOSADURGA@ILLINOIS.GOV A MINIMUM OF 72 HOURS IN ADVANCE OF BEGINNING WORK.
- THE RESIDENT ENGINEER SHALL CONTACT THE AREA TRAFFIC FIELD TECHNICIAN PATRICE HARRIS AT PATRICE.HARRIS@ILLINOIS.GOV A MINIMUM OF TWO (2) WEEKS PRIOR TO PLACEMENT OF PERMANENT PAVEMENT MARKINGS
- THE CONTRACTOR WILL NOT BE ALLOWED TO SET UP A YARD OR FIELD OFFICE ON STATE PROPERTY WITHOUT WRITTEN PERMISSION FROM THE DEPARTMENT.
- ANY PAVEMENT MARKINGS AND RAISED REFLECTIVE PAVEMENT MARKERS OBLITERATED BY MILLING AND RESURFACING OPERATIONS ON SIDE STREETS AND ENTRANCES SHALL BE REPLACED AND PAID FOR IN KIND.
- ALL DAMAGE TO EXISTING PAVEMENT MARKINGS OR RAISED REFLECTIVE PAVEMENT MARKERS OUTSIDE THE REMOVAL LINE SHOWN ON THE PLANS SHALL BE REPLACED AT NO ADDITIONAL COST TO THE DEPARTMENT.
- BEFORE BEGINNING ANY WORK, THE CONTRACTOR SHALL RETAIN AND RECORD FOR FUTURE REFERENCE, ALL EXISTING PAVEMENT MARKING LINES (AND RAISED REFLECTIVE PAVEMENT MARKERS) IN ORDER THAT THESE LOCATIONS CAN BE RE-ESTABLISHED FOR STRIPING. EXACT LOCATIONS OF ALL PAVEMENT MARKINGS SHALL BE AS SHOWN ON THE PLANS OR AS DIRECTED BY THE ENGINEER
- ALL FINAL PAVEMENT PATCHING LOCATIONS WILL BE DETERMINED IN THE FIELD BY THE RESIDENT ENGINEER.
- LOCATION OF COMBINATION CONCRETE CURB AND GUTTER REMOVAL AND REPLACEMENT AS WELL AS SEEDING AND PERMIETER EROSION BARRIER WILL BE DETERMINED IN THE FIELD BY THE RESIDENT ENGINEER
- DRAINAGE ADJUSTMENT OR RECONSTRUCTION LOCATIONS WILL BE DETERMINED IN THE FIELD BY THE RESIDENT ENGINEER.
- IT SHALL BE THE CONTRACTOR'S RESPONSIBILITY TO VERIFY ALL DIMENSIONS AND CONDITIONS EXISTING IN THE FIELD PRIOR TO CONSTRUCTION AND ORDERING OF MATERIALS.
- FRAMES AND GRATES ADJUSTMENT OF PRIVATE UTILITIES WITHIN THE LIMITS OF THE IMPROVEMENTS SHALL BE DONE BY THEIR RESPECTIVE OWNERS AND ARE NOT PART OF THIS CONTRACT.
- THE CONTRACTOR SHALL BE REQUIRED TO PROVIDE ACCESS TO ABUTTING PROPERTY AT ALL TIMES DURING THE CONSTRUCTION OF THIS PROJECT.
- DO NOT SCALE PLANS FOR CONSTRUCTION DIMENSIONS.
- TEMPORARY PAVEMENT MARKING, TYPE III TAPE SHALL BE USED FOR SHORT TERM PAVEMENT MARKINGS ON ALL FINAL SURFACES.
- THE CONTRACTOR SHALL BE REQUIRED TO KEEP A RECORD OF THE LOCATIONS OF PLATED STRUCTURES BY STATION AND OFFSET LEFT OR RIGHT OF THE CENTERLINE OF PAVEMENT.
- THE CONTRACTOR SHALL BE REQUIRED TO KEEP A RECORD OF THE LOCATIONS OF THE BURIED STRUCTURES ACCORDING TO THE STATION AND DISTANCE LEFT OR RIGHT OF THE CENTERLINE OF PAVEMENT. UPON COMPLETION OF THE WORK, THE CONTRACTOR SHALL DELIVER THE RECORD TO THE ENGINEER.
- BUTT JOINTS WILL BE INSTALLED AT THE ENDS OF ALL RESURFACING (WHERE RESURFACING MEETS EXISTING PAVEMENT) ACCORDING TO THE "BUTT JOINT AND HOT-MIX ASPHALT TAPER DETAILS" SHEET INCLUDED IN THE PLANS, UNLESS OTHERWISE SPECIFIED.
- THE RE SHALL NOTIFY THE ROADSIDE DEVELOPMENT UNIT A MINIMUM OF TEN DAYS IN ADVANCE OF TREE REMOVAL OPERATIONS AT (847) 705-4171.
- ALL MILLED SURFACES SHALL BE AT A UNIFORM CROSS SLOPE PER LANE AND FREE OF RIDGES BETWEEN PASSES. ANY DEVIATIONS SHALL BE CORRECTED AT NO COST TO DEPARTMENT.

MODEL: Default
 FILE NAME: p:\uldrct-pw-bentley.com\p\uldrct\Documents\DOT Office\Dr\drct_1\Project\158920\CADD\data\Design\158920-dt-egenrcr.dgn

USER NAME = mohammad.hamwi	DESIGNED -	REVISED -
	DRAWN -	REVISED -
PLOT SCALE = 100,0000' / in.	CHECKED -	REVISED -
PLOT DATE = 12/15/2022	DATE -	REVISED -

STATE OF ILLINOIS DEPARTMENT OF TRANSPORTATION

INDEX OF SHEETS, STATE STANDARDS & GENERAL NOTES				F.A.U. RTE.	SECTION	COUNTY	TOTAL SHEETS	SHEET NO.
BARRINGTON ROAD AND LAKE-COOK ROAD				VAR.	2020-191-R5	COOK LAKE	29	2
SCALE: SHEET OF SHEETS STA. TO STA.				CONTRACT NO. 62M65				
				ILLINOIS FED. AID PROJECT				

GENERAL NOTES

22. DOUBLE LANE MARKERS ARE TO BE USED AS SHOWN ON THE DISTRICT ONE DETAIL "TYPICAL APPLICATIONS - RAISED REFLECTIVE PAVEMENT MARKERS (SNOW-PLOW RESISTANT)" SHOWN IN THE PLANS.
23. STORM SEWER CONSTRUCTED UNDER THE ROADWAY SHALL BE BACKFILLED ACCORDING TO METHOD 1 OF ARTICLE 550.07 OF THE STANDARD SPECIFICATIONS.
24. TOP OF GRATE OR RIM ELEVATIONS GIVEN ON THE PLANS ARE ONLY TO ASSIST THE CONTRACTOR IN DETERMINING THE APPROXIMATE OVERALL HEIGHT OF EACH STRUCTURE. FRAMES/GRATES/LIDS ON ALL NEW STRUCTURES SHALL BE ADJUSTED TO THE FINAL ELEVATIONS OF THE AREAS IN WHICH THEY ARE LOCATED, AS PART OF THE STRUCTURE COST. PROPOSED SEWER LENGTHS PROVIDED IN THE QUANTITIES ARE FROM THE CENTER OF THE STRUCTURES.
25. OVERNIGHT LANE CLOSURES SHALL NOT BE ALLOWED FOR REHABILITATION PROJECTS INVOLVING DAYTIME MILLING AND RESURFACING OPERATIONS AND CLASS D PATCHING UNLESS OTHER CONDITIONS WARRANT EXTENDED LANE CLOSURES AS DETERMINED AND APPROVED IN WRITING BY THE ENGINEER OR AS PROVIDED FOR IN THE CONTRACT SPECIFICATIONS.
26. EXISTING BROKEN FRAMES AND LIDS SHALL BE REMOVED AND DISPOSED OF BY THE CONTRACTOR AND SHALL BE REPLACED AS DIRECTED BY THE ENGINEER. REPLACEMENT FRAMES AND LIDS WILL BE PAID FOR ACCORDING TO ARTICLE 109.04 OF THE STANDARD SPECIFICATIONS UNLESS A SEPARATE PAY ITEM HAS BEEN PROVIDED.
27. SOIL DISTURBANCE SHALL BE CONDUCTED IN SUCH A MANNER AS TO MINIMIZE EROSION.
28. PROPERTIES AND CHANNELS ADJOINING THE SITE SHALL BE PROTECTED FROM EROSION AND SEDIMENTATION.
29. SOIL EROSION AND SEDIMENT CONTROL FEATURES SHALL BE CONSTRUCTED PRIOR TO THE COMMENCEMENT OF HYDROLOGIC DISTURBANCE OF UPLAND AREAS.
30. DISTURBED AREAS SHALL BE STABILIZED WITH TEMPORARY OR PERMANENT MEASURES WITHIN ONE (1) CALENDAR DAY FOLLOWING THE END OF ACTIVE HYDROLOGIC DISTURBANCE.
31. ALL TEMPORARY AND PERMANENT EROSION AND SEDIMENT CONTROL MEASURES SHALL BE MAINTAINED IN EFFECTIVE WORKING CONDITION.
32. ALL ESC MEASURES WILL BE MAINTAINED IN ACCORDANCE WITH THE IDOT EROSION AND SEDIMENT CONTROL FIELD GUIDE FOR CONSTRUCTION INSPECTION AND IDOT'S BEST MANAGEMENT PRACTICES-MAINTENANCE GUIDE: ([HTTP://WWW.IDOT.ILLINOIS.GOV/TRANSPORTATION-SYSTEM/ENVIRONMENT/EROSION-AND-SEDIMENT-CONTROL](http://www.idot.illinois.gov/transportation-system/environment/erosion-and-sediment-control)).
33. THE CONTRACTOR SHALL TAKE EXTRA CARE IN GRADING AND EXCAVATING NEAR TREES WHICH ARE NOT MARKED FOR REMOVAL SO AS NOT TO CAUSE INJURY TO THE ROOT SYSTEM OR TRUNKS. ANY DAMAGE DONE TO EXISTING ITEMS BY THE CONTRACTOR SHALL BE REPAIRED BY THE CONTRACTOR AT THE CONTRACTOR'S OWN EXPENSE.
34. THIS PROJECT REQUIRES A US ARMY CORPS OF ENGINEERS (USACE) 404 PERMIT THAT WILL BE SECURED BY THE DEPARTMENT. AS A CONDITION OF THIS PERMIT, THE CONTRACTOR WILL NEED TO SUBMIT AN IN-STREAM WORK PLAN (INCLUDING WORK WITHIN WETLANDS) TO THE DEPARTMENT FOR APPROVAL. GUIDELINES ON ACCEPTABLE IN-STREAM WORK TECHNIQUES (INCLUDING WORK WITHIN WETLANDS) CAN BE FOUND ON THE USACE WEBSITE. THE USACE DEFINES AND DETERMINES IN-STREAM WORK. THE COST OF ALL MATERIALS AND LABOR NECESSARY TO COMPLY WITH THE ABOVE PROVISIONS TO PREPARE AND IMPLEMENT AN IN-STREAM WORK PLAN (INCLUDING WORK WITHIN WETLANDS) WILL NOT BE PAID FOR SEPARATELY, BUT SHALL BE CONSIDERED AS INCLUDED IN THE UNIT BID PRICES OF THE CONTRACT AND NO ADDITIONAL COMPENSATION WILL BE ALLOWED WITH THE EXCEPTION OF COFFERDAMS, WHICH WILL BE PAID FOR AS COFFERDAM (TYPE 1) (IN-STREAM/WETLAND WORK) WITH A BASIS OF PAYMENT OF EACH.
35. "WETLANDS NO INTRUSION" SIGNAGE SHOULD ALSO BE PROVIDED AT THE BOUNDARY OF ALL UN-IMPACTED WETLANDS AND/OR WOUS. THE CONTRACTOR CAN BORROW THE SIGNS FROM THE BUREAU OF MAINTENANCE. INCLUDE TEMPORARY FENCING AND WETLAND SIGNAGE WITHIN THE EROSION AND SEDIMENT CONTROL STRATEGY.
36. TREES (3) INCHES OR GREATER IN DIAMETER AT BREST HEIGHT WILL NOT BE CLEARED BETWEEN APRIL 1 AND OCTOBER 31.

MODEL: Default
 FILE NAME: p:\ultra-cad\paw-bee\paw.com\FW\DOT\Documents\DOT Office\District 1\Project\158920\CADD\data\Design\158920-ctb-engineering.dgn

USER NAME = mohammad.hamwi	DESIGNED -	REVISED -
	DRAWN -	REVISED -
PLOT SCALE = 100,0000' / in.	CHECKED -	REVISED -
PLOT DATE = 12/15/2022	DATE -	REVISED -

STATE OF ILLINOIS DEPARTMENT OF TRANSPORTATION

INDEX OF SHEETS, STATE STANDARDS & GENERAL NOTES BARRINGTON ROAD AND LAKE-COOK ROAD

SCALE: SHEET OF SHEETS STA. TO STA.

F.A.U. RTE.	SECTION	COUNTY	TOTAL SHEETS	SHEET NO.
VAR.	2020-191-R5	COOK LAKE	29	3
CONTRACT NO. 62M65				
ILLINOIS			FED. AID PROJECT	

SUMMARY OF QUANTITIES			TOTAL QUANTITIES	CONSTRUCTION TYPE CODE			
CODE NO	ITEM	UNIT		80% FED 20% STATE BARRINGTON RD 0005	80% FED 20% STATE LAKE-COOK RD 0004	80% FED 20% STATE LAKE-COOK RD 0004	100% STATE COOK BARRINGTON RD 0005
20100110	TREE REMOVAL (6-15 UNITS DIAMETER)	UNIT	111	111			
20100210	TREE REMOVAL (OVER 15 UNITS DIAMETER)	UNIT	23	23			
20101000	TEMPORARY FENCE	FOOT	142		142		
20200100	EARTH EXCAVATION	CU YD	29	5	24		
20201200	REMOVAL AND DISPOSAL OF UNSUITABLE MATERIAL	CU YD	6	3	3		
20400800	FURNISHED EXCAVATION	CU YD	141	76	65		
20800150	TRENCH BACKFILL	CU YD	34.9	17.4	17.5		
21101505	TOPSOIL EXCAVATION AND PLACEMENT	CU YD	208	63	145		
25000210	SEEDING, CLASS 2A	ACRE	0.07	0.02	0.05		
25000312	SEEDING, CLASS 4A	ACRE	0.23	0.07	0.16		
25000400	NITROGEN FERTILIZER NUTRIENT	POUND	6	2	4		
25000500	PHOSPHORUS FERTILIZER NUTRIENT	POUND	2	2			
25000600	POTASSIUM FERTILIZER NUTRIENT	POUND	6	2	4		
25100630	EROSION CONTROL BLANKET	SO YD	1401	425	976		
28000250	TEMPORARY EROSION CONTROL SEEDING	POUND	30	9	21		

SUMMARY OF QUANTITIES			TOTAL QUANTITIES	CONSTRUCTION TYPE CODE			
CODE NO	ITEM	UNIT		80% FED 20% STATE BARRINGTON RD 0005	80% FED 20% STATE LAKE-COOK RD 0004	80% FED 20% STATE LAKE-COOK RD 0004	100% STATE COOK BARRINGTON RD 0005
28000305	TEMPORARY DITCH CHECKS	FOOT	140			140	
28000400	PERIMETER EROSION BARRIER	FOOT	727		315	412	
28100105	STONE RIPRAP, CLASS A3	SO YD	10		5	5	
31101200	SUBBASE GRANULAR MATERIAL, TYPE B 4"	SO YD	54		27	27	
40600290	BITUMINOUS MATERIALS (TACK COAT)	POUND	21,323	21,178	72	73	
40600370	LONGITUDINAL JOINT SEALANT	FOOT	14,000	14,000			
40600400	MIXTURE FOR CRACKS, JOINTS, AND FLANGEWAYS	TON	61	61			
40600982	HOT-MIX ASPHALT SURFACE REMOVAL -BUTT JOINT	SO YD	303	273	15	15	
40602985	HOT-MIX ASPHALT BINDER COURSE, IL-9.5, N70	TON	3,514	3,514			
40604172	POLYMERIZED HOT-MIX ASPHALT SURFACE COURSE, IL-9.5, MIX "E", N70	TON	3,103	3,075	14	14	
44000156	HOT-MIX ASPHALT SURFACE REMOVAL, 1 3/4"	SO YD	320		158	162	
44000164	HOT-MIX ASPHALT SURFACE REMOVAL, 3 3/4"	SO YD	31,375	31,375			

FILE NAME =	USER NAME = mohammad.tamwi	DESIGNED -	REVISED -	STATE OF ILLINOIS DEPARTMENT OF TRANSPORTATION	BARRINGTON ROAD AND LAKE-COOK ROAD SUMMARY OF QUANTITIES	F.A.U. RTÉ.	SECTION	COUNTY	TOTAL SHEET NO.	
plw\N\dot-pw.zentley.com\PIW\DOT Documents\DOT Office\District\Projects\DI58920\CADD\Design\DI58920-sm-300.DWG	PLLOT SCALE = 100,0000' / 1in	CHECKED -	REVISED -			VAR	2020-191-R5	COOK LAKE	29	4
	PLLOT DATE = 12/15/2022	DATE -	REVISED -			SCALE: SHEET NO. OF SHEETS STA. TO STA.		CONTRACT NO. 62M65		
						FED. ROAD DIST. NO. 1 ILLINOIS FED. AID PROJECT				

* = SPECIALTY ITEMS
 △ = NON-PARTICIPATING WORK (100% STATE)

SUMMARY OF QUANTITIES			TOTAL QUANTITIES	CONSTRUCTION TYPE CODE				
CODE NO	ITEM	UNIT		URBAN	80% FED 20% STATE BARRINGTON RD 0005	80% FED 20% STATE COOK LAKE-COOK RD 0004	80% FED 20% STATE LAKE LAKE-COOK RD 0004	100% STATE COOK BARRINGTON RD 0005
44201765	CLASS D PATCHES, TYPE II, 10 INCH	SO YD	450	450				
44201769	CLASS D PATCHES, TYPE III, 10 INCH	SO YD	300	300				
44201771	CLASS D PATCHES, TYPE IV, 10 INCH	SO YD	2000	2000				
44201839	CLASS D PATCHES, TYPE II, 16 INCH	SO YD	18		9	9		
44201843	CLASS D PATCHES, TYPE III, 16 INCH	SO YD	36		18	18		
48101600	AGGREGATE WEDGE SHOULDER, TYPE B 8"	SO YD	14		7	7		
48102100	AGGREGATE WEDGE SHOULDER, TYPE B	TON	271.3	260	2.5	8.8		
54261324	CONCRETE END SECTION, STANDARD 542001, 24", 1:3	EACH	4		2	2		
542A1069	PIPE CULVERTS, CLASS A, TYPE 2 24"	FOOT	128		63.2	64.8		
550A0340	STORM SEWERS, CLASS A, TYPE 2 12"	FOOT	92.7		50	42.7		
55100300	STORM SEWER REMOVAL 8"	FOOT	14		6	8		
55100500	STORM SEWER REMOVAL 12"	FOOT	92		50	42		
60221100	MANHOLES, TYPE A, 5' -DIAMETER, TYPE 1 FRAME, CLOSED LID	EACH	1		1			
60252800	CATCH BASINS TO BE RECONSTRUCTED	EACH	1	1				
60300105	FRAMES AND GRATES TO BE ADJUSTED	EACH	3	3				

SUMMARY OF QUANTITIES			TOTAL QUANTITIES	CONSTRUCTION TYPE CODE				
CODE NO	ITEM	UNIT		URBAN	80% FED 20% STATE BARRINGTON RD 0005	80% FED 20% STATE COOK LAKE-COOK RD 0004	80% FED 20% STATE LAKE LAKE-COOK RD 0004	100% STATE COOK BARRINGTON RD 0005
60300305	FRAMES AND LIDS TO BE ADJUSTED	EACH	3	3				
60406000	FRAMES AND LIDS, TYPE 1, OPEN LID	EACH	1	1				
60406100	FRAMES AND LIDS, TYPE 1, CLOSED LID	EACH	1	1				
60500040	REMOVING MANHOLES	EACH	2		1	1		
60500050	REMOVING CATCH BASINS	EACH	1		1			
60500060	REMOVING INLETS	EACH	1			1		
* 66900200	NON-SPECIAL WASTE DISPOSAL	CU YD	395		151	244		
* 66900530	SOIL DISPOSAL ANALYSIS	EACH	1		0.5	0.5		
* 66901001	REGULATED SUBSTANCES PRE-CONSTRUCTION PLAN	L SUM	1		0.5	0.5		
* 66901003	REGULATED SUBSTANCES FINAL CONSTRUCTION REPORT	L SUM	1		0.5	0.5		
* 66901006	REGULATED SUBSTANCES MONITORING	CAL DA	4		2	2		
67100100	MOBILIZATION	L SUM	1	0.8	0.1	0.1		
70100460	TRAFFIC CONTROL AND PROTECTION, STANDARD 701306	L SUM	1		0.5	0.5		
70100600	TRAFFIC CONTROL AND PROTECTION, STANDARD 701336	L SUM	1		0.5	0.5		

* = SPECIALTY ITEMS
 △ = NON-PARTICIPATING WORK (100% STATE)

FILE NAME =	USER NAME = mohammad.hamwi	DESIGNED -	REVISED -
pw:\nidat-pw.bentley.com\PI\DOT\Documents\UDOT	Office\District\Projects\DI58920\CADData\Design\DI58920-sh-300	DRAWN -	REVISED -
	PLOT SCALE = 100.0000' / 1in.	CHECKED -	REVISED -
	PLOT DATE = 12/15/2022	DATE -	REVISED -

STATE OF ILLINOIS
 DEPARTMENT OF TRANSPORTATION

BARRINGTON ROAD AND LAKE-COOK ROAD
 SUMMARY OF QUANTITIES

SCALE:	SHEET NO.	OF SHEETS	STA.	TO STA.
--------	-----------	-----------	------	---------

F.A.U. RE.	SECTION	COUNTY	TOTAL SHEETS	SHEET NO.
VAR	2020-191-R5	COOK LAKE	29	5
CONTRACT NO.			62M65	
FED. ROAD DIST. NO. 1 ILLINOIS FED. AID PROJECT				

SUMMARY OF QUANTITIES			TOTAL QUANTITIES	CONSTRUCTION TYPE CODE				SUMMARY OF QUANTITIES			TOTAL QUANTITIES	CONSTRUCTION TYPE CODE			
CODE NO	ITEM	UNIT		URBAN	80% FED 20% STATE BARRINGTON RD 0005	80% FED 20% STATE COOK LAKE-COOK RD 0004	80% FED 20% STATE LAKE LAKE-COOK RD 0004	100% STATE COOK BARRINGTON RD 0005	CODE NO	ITEM		UNIT	URBAN	80% FED 20% STATE BARRINGTON RD 0005	80% FED 20% STATE COOK LAKE-COOK RD 0004
70102620	TRAFFIC CONTROL AND PROTECTION, STANDARD	L SUM	1	1				70300261	TEMPORARY PAVEMENT MARKING - LINE 12"	FOOT	450	450			
	701501								- PAINT						
70102622	TRAFFIC CONTROL AND PROTECTION, STANDARD	L SUM	1	1				70300281	TEMPORARY PAVEMENT MARKING - LINE 24"	FOOT	100	100			
	701502								- PAINT						
70102625	TRAFFIC CONTROL AND PROTECTION, STANDARD	L SUM	1	1				70306120	TEMPORARY PAVEMENT MARKING - LINE 4" -	FOOT	3,410	3,400		10	
	701606								TYPE III TAPE						
70102635	TRAFFIC CONTROL AND PROTECTION, STANDARD	L SUM	1	1				* 78000100	THERMOPLASTIC PAVEMENT MARKING - LETTERS	SO FT	300	300			
	701701								AND SYMBOLS						
70102640	TRAFFIC CONTROL AND PROTECTION, STANDARD	L SUM	1	1				* 78000200	THERMOPLASTIC PAVEMENT MARKING - LINE	FOOT	34,230	34,000	100	130	
	701801								4"						
70300100	SHORT TERM PAVEMENT MARKING	FOOT	10,020	10,000		20		* 78000400	THERMOPLASTIC PAVEMENT MARKING - LINE	FOOT	1,600	1,600			
									6"						
70300150	SHORT TERM PAVEMENT MARKING REMOVAL	SO FT	16,510	16,500		10		* 78000500	THERMOPLASTIC PAVEMENT MARKING - LINE	FOOT	250	250			
									8"						
70300211	TEMPORARY PAVEMENT MARKING - LETTERS	SO FT	300	300				* 78000600	THERMOPLASTIC PAVEMENT MARKING - LINE	FOOT	450	450			
	AND SYMBOLS - PAINT								12"						
70300221	TEMPORARY PAVEMENT MARKING - LINE 4"	FOOT	34,230	34,000	100	130		* 78000650	THERMOPLASTIC PAVEMENT MARKING - LINE	FOOT	100	100			
	- PAINT								24"						
70300241	TEMPORARY PAVEMENT MARKING - LINE 6"	FOOT	1,600	1,600				* 78100100	RAISED REFLECTIVE PAVEMENT MARKER	EACH	367	365		2	
	- PAINT														
70300251	TEMPORARY PAVEMENT MARKING - LINE 8"	FOOT	250	250				78300200	RAISED REFLECTIVE PAVEMENT MARKER	EACH	367	365		2	
	- PAINT								REMOVAL						

* = SPECIALTY ITEMS
 △ = NON-PARTICIPATING WORK (100% STATE)

SUMMARY OF QUANTITIES			TOTAL QUANTITIES URBAN	CONSTRUCTION TYPE CODE			
CODE NO	ITEM	UNIT		80% FED 20% STATE BARRINGTON RD 0005	80% FED 20% STATE COOK LAKE-COOK RD 0004	80% FED 20% STATE LAKE LAKE-COOK RD 0004	100% STATE COOK BARRINGTON RD 0005
78300202	PAVEMENT MARKING REMOVAL - WATER BLASTING	SO FT	78		34	44	
* 88600600	DETECTOR LOOP REPLACEMENT	FOOT	65	65			
X0900075	COFFERDAM (TYPE 1) (IN-STREAM/WETLAND WORK)	EACH	1		1		
X2010100	TREE, LIMB REMOVAL (4-10 INCHES)	EACH	12	12			
X2010200	TREE, LIMB REMOVAL (OVER 10 INCHES)	EACH	5	5			
X2010400	STUMP REMOVAL ONLY	UNIT	54		36	18	
X2020110	GRADING AND SHAPING SHOULDERS	UNIT	168.5	164	1	3.5	
X4060995	TEMPORARY RAMP, SPECIAL	SO YD	273	273			
X4400503	COMBINATION CURB AND GUTTER REMOVAL AND REPLACEMENT GREATER THAN 10 FEET	FOOT	270	270			
△ X5537800	STORM SEWERS TO BE CLEANED 12"	FOOT	240			240	
X6023102	MANHOLES, TYPE A, 5'-DIAMETER, TYPE 1 FRAME CLOSED LID, SPECIAL	EACH	1			1	
X6030310	FRAMES AND LIDS TO BE ADJUSTED (SPECIAL)	EACH	3	3			
X6700407	ENGINEER'S FIELD OFFICE, TYPE A (D1)	CAL MO	12	6	3	3	
Z0013798	CONSTRUCTION LAYOUT	L SUM	1		0.5	0.5	

SUMMARY OF QUANTITIES			TOTAL QUANTITIES URBAN	CONSTRUCTION TYPE CODE			
CODE NO	ITEM	UNIT		80% FED 20% STATE BARRINGTON RD 0005	80% FED 20% STATE COOK LAKE-COOK RD 0004	80% FED 20% STATE LAKE LAKE-COOK RD 0004	100% STATE COOK BARRINGTON RD 0005
Z0018500	DRAINAGE STRUCTURES TO BE CLEANED	EACH	12				12
Z0030850	TEMPORARY INFORMATIONS SIGNING	SO FT	102.8	51.4	25.7	25.7	
Z0064800	SELECTIVE CLEARING	UNIT	45	45			
∅ Z0076600	TRAINEES	HOURS	500	500			
∅ Z0076604	TRAINEES - TRAINING PROGRAM GRADUATE	HOURS	500	500			

FILE NAME =	USER NAME = mohammad.hamid	DESIGNED -	REVISED -
pw\N\dot-pw\benley.com\PW\DOT\Documents\1007 - Office\District\Projects\158920\CADD\Design\158920-sht-300.dwg		DRAWN -	REVISED -
	PLOT SCALE = 100.0000' / 1in	CHECKED -	REVISED -
	PLOT DATE = 12/15/2022	DATE -	REVISED -

**STATE OF ILLINOIS
DEPARTMENT OF TRANSPORTATION**

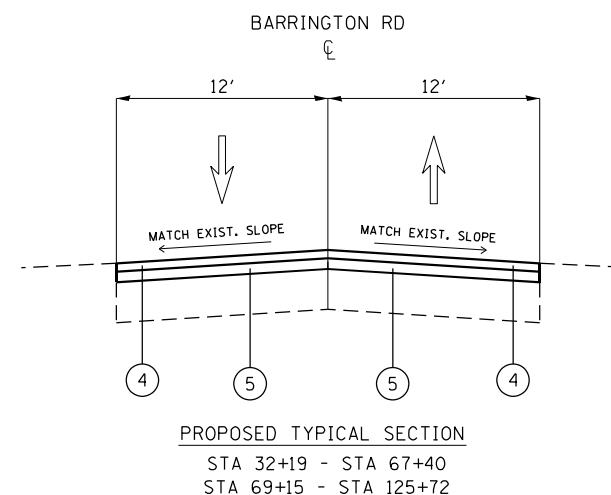
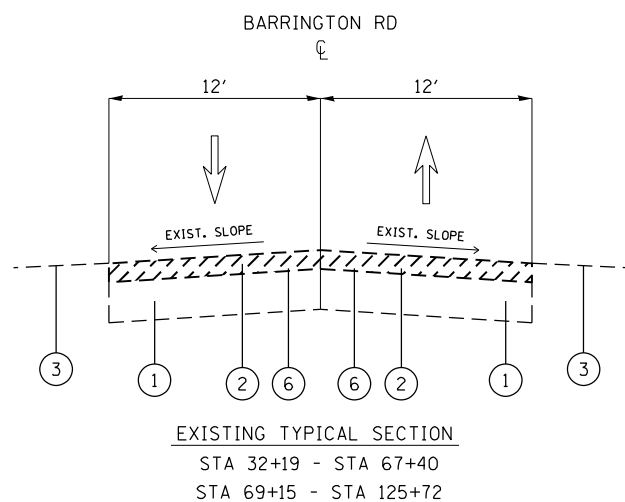
**BARRINGTON ROAD AND LAKE-COOK ROAD
SUMMARY OF QUANTITIES**

F.A.U. RTE.	SECTION	COUNTY	TOTAL SHEETS	SHEET NO.
VAR	2020-191-R5	COOK LAKE	29	7
CONTRACT NO.			62M65	
FED. ROAD DIST. NO. 1 ILLINOIS FED. AID PROJECT				

∅ 0042
* = SPECIALTY ITEMS
△ = NON-PARTICIPATING WORK (100% STATE)

LEGEND

- 1. EXISTING PCC BASE COURSE, 10" +/-
- 2. EXISTING HMA SURFACE, 3 3/4" +/-
- 3. AGGREGATE SHOULDER
- 4. POLYMERIZED HOT-MIX ASPHALT SURFACE COURSE, IL-9.5, MIX "E", N70, 1 3/4"
- 5. PROPOSED HOT-MIX ASPHALT BINDER COURSE, IL-9.5, N70, 2.0 "
- 6. PROPOSED HMA SURFACE REMOVAL , 3 3/4"



LOCATION	HOT-MIX ASPHALT MIXTURE REQUIREMENTS		QUALITY MANAGEMENT PROGRAM (QMP)
	MIXTURE TYPE	AIR VOIDS(%) @ Ndes	
	PAVEMENT		
BARRINGTON ROAD	POLYMERIZED HOT-MIX ASPHALT SURFACE COURSE, IL-9.5, MIX "E", N70, 1 3/4"	4.0% @ 70 GYR.	OCP
BARRINGTON ROAD	HMA BINDER COURSE, IL-9.5, N70 2"	4.0% @ 70 GYR.	OCP
	PATCHING		
BARRINGTON ROAD	CLASS D PATCHES (HMA BINDER IL-19 MM; 10")	4.0% @ 70 GYR.	QC/OA
	TEMPORARY RAMP (SPECIAL)		
BARRINGTON ROAD	HMA BINDER COURSE IL-9.5 N70	4.0% @ 70 GYR.	QC/OA
	PAVEMENT		
LAKE-COOK ROAD	POLYMERIZED HOT-MIX ASPHALT SURFACE COURSE, IL-9.5, MIX "E", N70, 1 3/4"	4.0% @ 70 GYR.	OCP
	PATCHING		
LAKE-COOK ROAD	CLASS D PATCHES (HMA BINDER IL-19.0 MM; 16")	4.0% @ 70 GYR.	QC/OA
QMP DESIGNATION: QUALITY CONTROL/QUALITY ASSURANCE (QC/OA); QUALITY CONTROL FOR PERFORMANCE (OCP); PAY FOR PERFORMANCE (PFP)			

NOTE

- NOTE 1: THE UNIT WEIGHT USED TO CALCULATE ALL HOT-MIX ASPHALT SURFACE MIXTURE QUANTITIES IS 112 LBS/SQ YD/IN.
- NOTE 2: THE "AC TYPE" FOR POLYMERIZED HMA MIXES SHALL BE "SBS/SBR PG 76 -22" AND AND FOR NON-POLYMERIZED HMA THE "AC TYPE" SHALL BE "PG 64 -22" UNLESS MODIFIED BY RECLAIMED MATERIALS SPECIFICATIONS.
- NOTE 3: THE CONTRACTOR SHALL MILL BEFORE PATCHING ON BARRINGTON RD
- NOTE 4: THE LONGITUDINAL JOINT SEALANT SHALL BE PLACE OVER THE HMA BC IL-9.5

MODEL: Default
 FILE NAME: p:\projects\paw_benefits\com\paw\DOT\Documents\DOT Office\Barrington - 11\Project\158920\CADD\DATA\Design\158920.dwg
 PROJECT: 158920\CADD\DATA\Design\158920.dwg

USER NAME = mohammad.hamwi	DESIGNED -	REVISED -
PLOT SCALE = 100,0002 ' / in.	DRAWN -	REVISED -
PLOT DATE = 12/15/2022	CHECKED -	REVISED -
	DATE -	REVISED -

**STATE OF ILLINOIS
 DEPARTMENT OF TRANSPORTATION**

**TYPICAL SECTION
 BARRINGTON ROAD AND LAKE-COOK ROAD**

SCALE: SHEET OF SHEETS STA. TO STA.

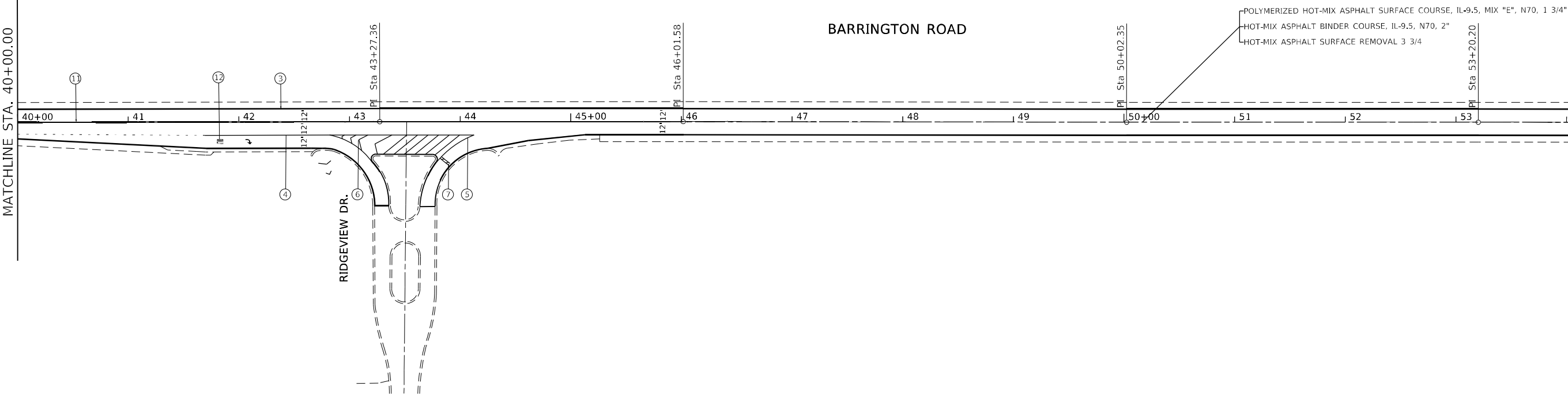
F.A.U. RTE.	SECTION	COUNTY	TOTAL SHEETS	SHEET NO.
VAR.	2021-191-R5	COOK LAKE	29	8
CONTRACT NO. 62M65				
ILLINOIS FED. AID PROJECT				



MATCHLINE STA. 40+00.00

MATCHLINE STA. 55+00.00

BARRINGTON ROAD



RIDGEVIEW DR.

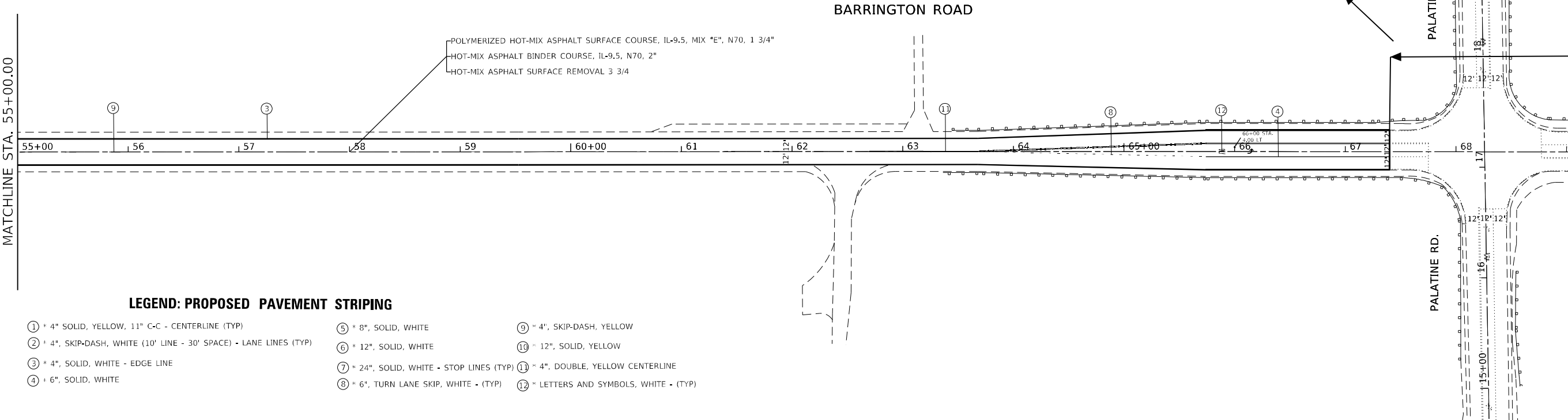
NEW PAVEMENT OMISSION STA 67+40 TO STA 69+15



MATCHLINE STA. 55+00.00

MATCHLINE STA. 70+00.00

BARRINGTON ROAD



LEGEND: PROPOSED PAVEMENT STRIPING

- ① * 4" SOLID, YELLOW, 11" C-C - CENTERLINE (TYP)
- ② * 4", SKIP-DASH, WHITE (10' LINE - 30' SPACE) - LANE LINES (TYP)
- ③ * 4", SOLID, WHITE - EDGE LINE
- ④ * 6", SOLID, WHITE
- ⑤ * 8", SOLID, WHITE
- ⑥ * 12", SOLID, WHITE
- ⑦ * 24", SOLID, WHITE - STOP LINES (TYP)
- ⑧ * 6", TURN LANE SKIP, WHITE - (TYP)
- ⑨ * 4", SKIP-DASH, YELLOW
- ⑩ * 12", SOLID, YELLOW
- ⑪ * 4", DOUBLE, YELLOW CENTERLINE
- ⑫ * LETTERS AND SYMBOLS, WHITE - (TYP)

MODEL: Default
FILE NAME: p:\project\new\berkeley.com\p\dot\Documents\DOT Office\Drawings\Project\158920\Cadd\Drawings\158920-Sub-A-Plan.dwg
PROJECT: 158920\Cadd\Drawings\158920-Sub-A-Plan.dwg

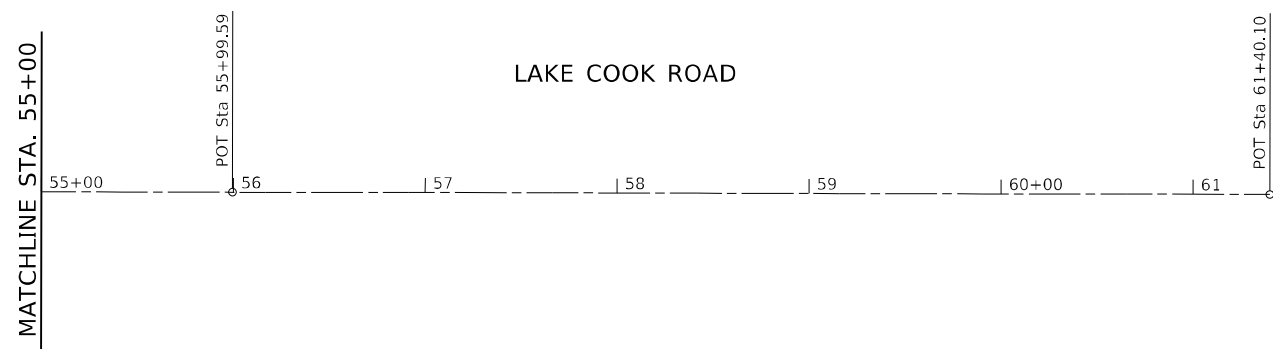
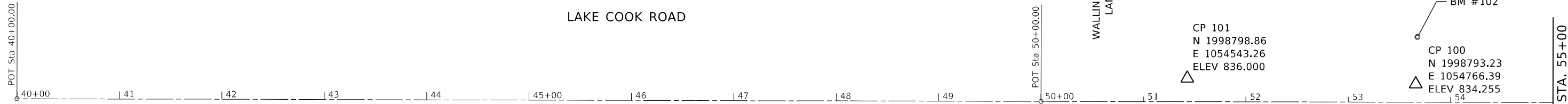
USER NAME = mohammad.hamwi	DESIGNED -	REVISED -
DRAWN -	REVISED -	
PLOT SCALE = 100,0000' / in.	CHECKED -	REVISED -
PLOT DATE = 12/16/2022	DATE -	REVISED -

STATE OF ILLINOIS DEPARTMENT OF TRANSPORTATION

ROADWAY PLAN BARRINGTON RD. (STONE CANYON CIRCLE TO FARMINGTON DR)

SCALE: 1"=50' SHEET OF SHEETS STA. TO STA.

F.A.U. RTE.	SECTION	COUNTY	TOTAL SHEETS	SHEET NO.
2553	2020-191-R5	COOK	29	10
CONTRACT NO. 62M65				
ILLINOIS FED. AID PROJECT				



ROUTE	POINT	NORTHING	EASTING	STATION
LAKE-COOK RD.	POT	1998778.8908	1053400.4835	40+00.00
	POT	1998776.3150	1054400.4802	50+00.00
	POT	1998774.9888	1055000.0697	55+99.59
	POT	1998773.7934	1055540.5404	61+40.1

BM #102 - CUT ON N. EDGE OF CONC.
 FLAT TOP OF STR #1002
 STA. 53+67.3/ 65.86' LT
 ELEV. 832.080

MODEL: Default
 FILE: \\na101c-pw-bentley.com\PW\DOT\Documents\DOT Office\Dir\rdet -\Project\158920\CADD\data\Design\150402-Lake-Cook-shc-ctb.dgn

USER NAME = mohammad.hamwi	DESIGNED -	REVISED -
	DRAWN -	REVISED -
PLOT SCALE = 100,0000 ' / in.	CHECKED -	REVISED -
PLOT DATE = 12/15/2022	DATE -	REVISED -

**STATE OF ILLINOIS
 DEPARTMENT OF TRANSPORTATION**

ALIGNMENT, TIES AND BENCHMARK LAKE COOK ROAD, EAST OF WALLINGFORD LANE			
SCALE: 1"=50'	SHEET	OF	SHEETS
	STA.	TO	STA.

F.A.U. RTE.	SECTION	COUNTY	TOTAL SHEETS	SHEET NO.
VAR.	2020-191-RS	COOK & LAKE	29	14
CONTRACT NO. 62M65				
ILLINOIS FED. AID PROJECT				

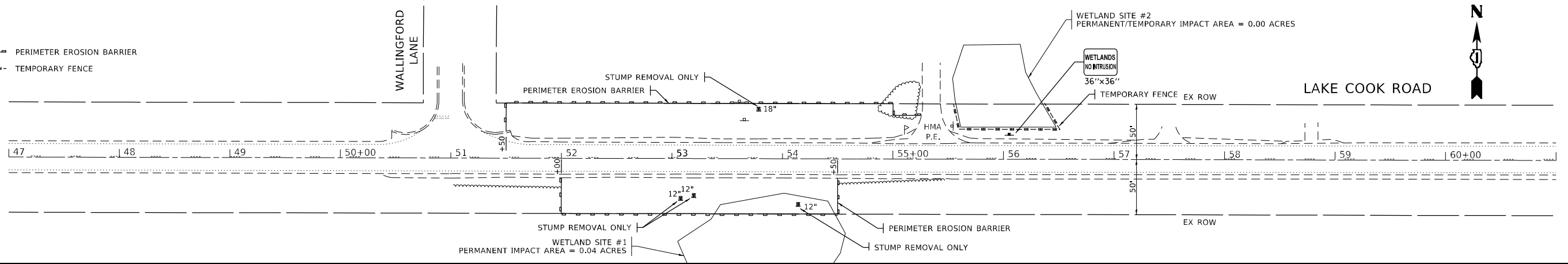
PLAN	SURVEYED	DATE
	PLOTTED	BY
	ALIGNMENT CHECKED	
	ROAD FILE NAME	
	NO.	

PROFILE	SURVEYED	DATE
	PLOTTED	BY
	GRADES CHECKED	
	STRUCTURE NOTATIONS CHECKED	
	NO.	

MODEL: Default
 FILE NAME: p:\work\pww\berlin\pww\pww\DOT\Documents\DOT\Office\Burler\1\Projects\158928\CADD\plan\Design\10407\Lake-Cook-east-plan.dgn

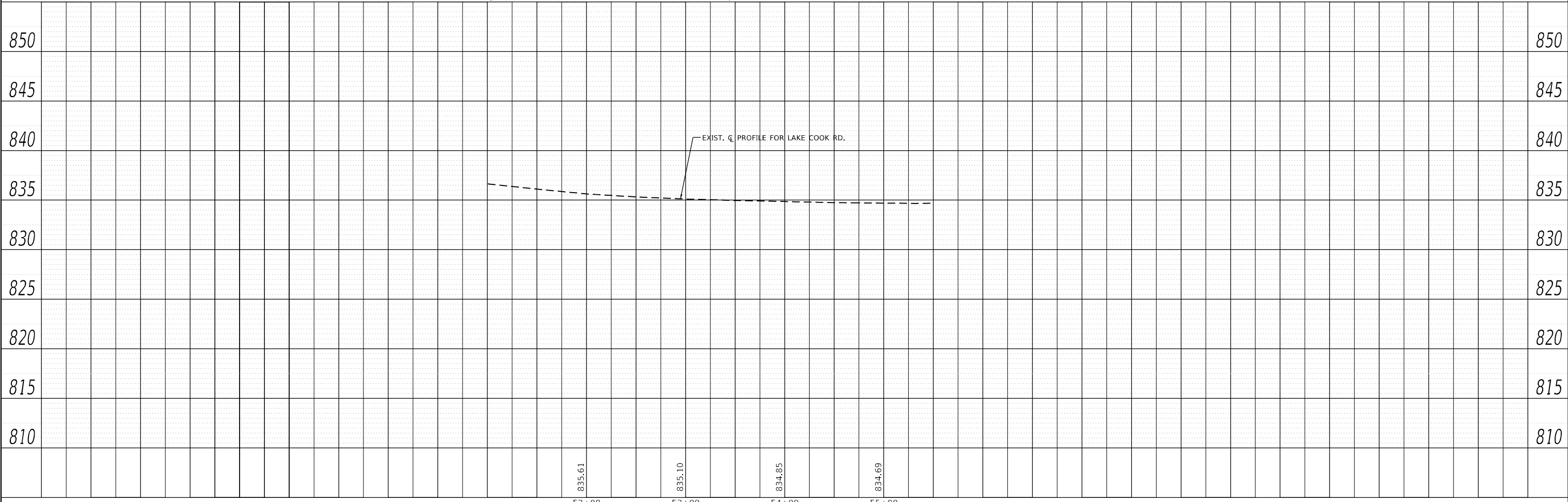
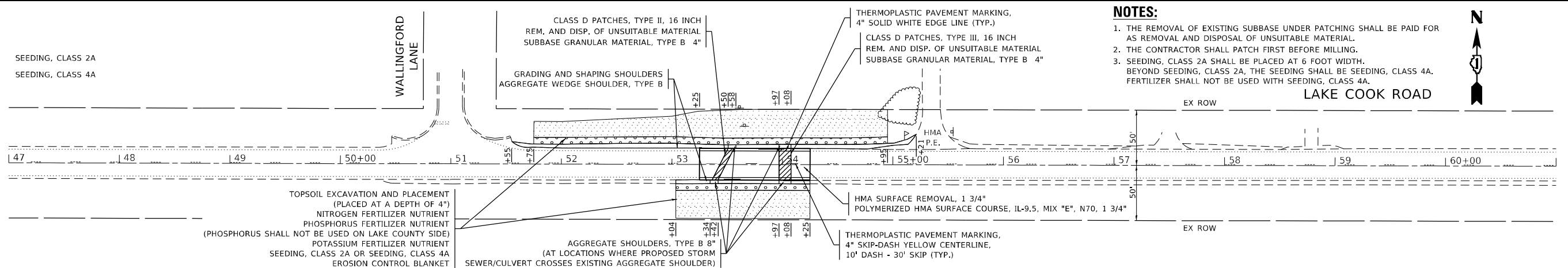
LEGEND

- PERIMETER EROSION BARRIER
- - - - - TEMPORARY FENCE



LEGEND

- SEEDING, CLASS 2A
- SEEDING, CLASS 4A



USER NAME = mohammad.hamwi	DESIGNED -	REVISED -
PLOT SCALE = 100,0000' / in.	DRAWN -	REVISED -
PLOT DATE = 12/15/2022	CHECKED -	REVISED -
	DATE -	REVISED -

**STATE OF ILLINOIS
DEPARTMENT OF TRANSPORTATION**

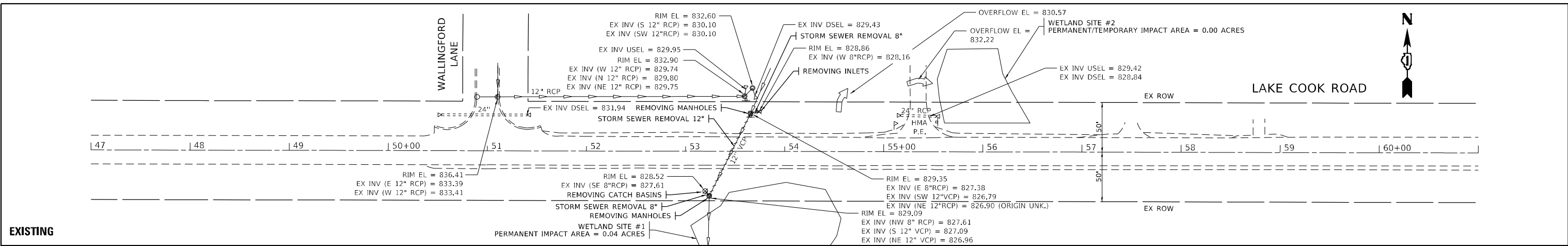
ROADWAY PLAN AND PROFILE			
LAKE COOK ROAD, EAST OF WALLINGFORD LANE			
SCALE:	SHEET	OF	SHEETS
	STA.	TO	STA.

F.A. RTE.	SECTION	COUNTY	TOTAL SHEETS	SHEET NO.
VAR.	2020-191-R5	COOK & LAKE	29	15
			CONTRACT NO. 62M65	
ILLINOIS FED. AID PROJECT				

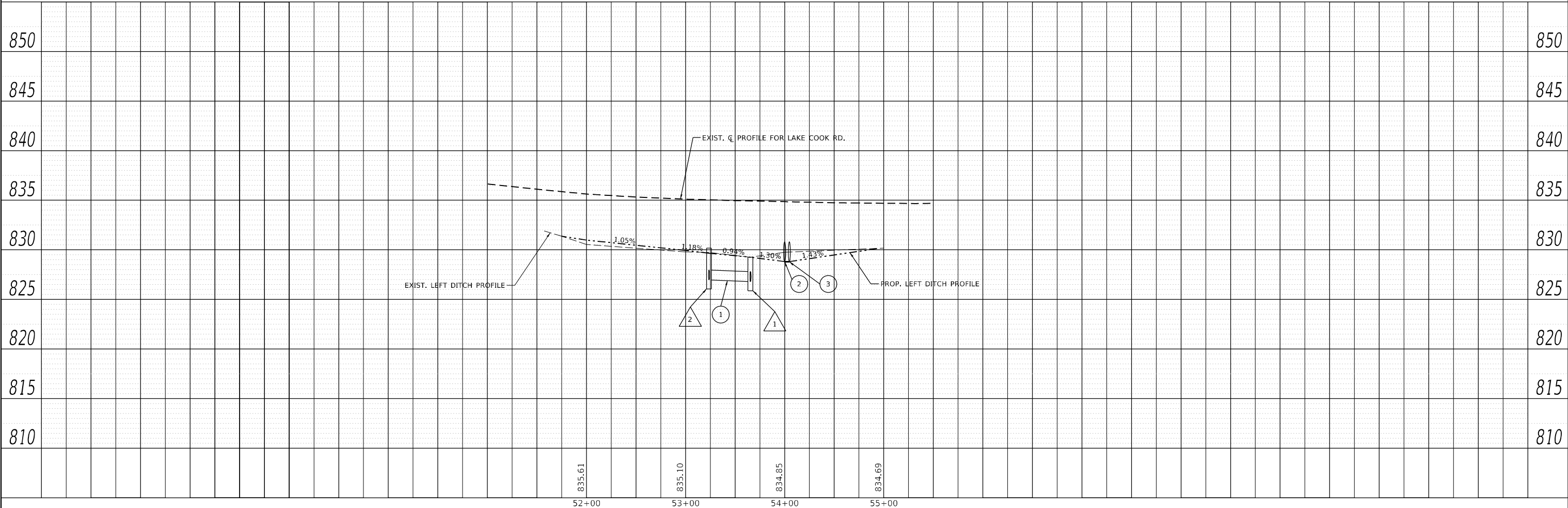
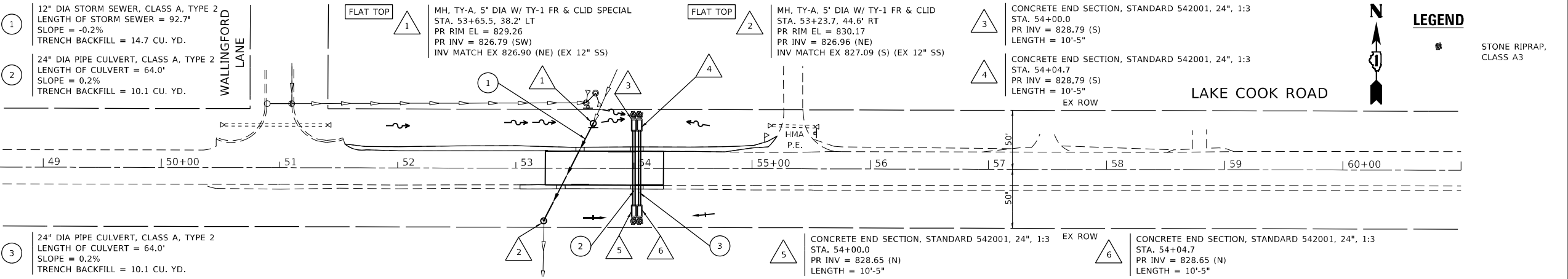
DATE	
BY	
PLAN	SURVEYED
	PLOTTED
	ALIGNMENT CHECKED
	STRUCTURE NOTATIONS CHECKED
	NOTE BOOK NO.
	FILE NAME

DATE	
BY	
PROFILE	SURVEYED
	PLOTTED
	GRADES CHECKED
	STRUCTURE NOTATIONS CHECKED
	NOTE BOOK NO.
	FILE NAME

MODEL: Default
 FILE NAME: j:\projects\62m65\lake-cook-east-plan.dwg
 PROJECTS\62M65\lake-cook-east-plan.dwg
 OFFICE: 62M65\lake-cook-east-plan.dwg



- NOTES:**
- THE CONNECTION OF AN EXISTING STORM SEWER TO A PROPOSED STRUCTURE AND THE REMOVAL WORK REQUIRED TO MAKE THE CONNECTION WILL NOT BE PAID FOR SEPARATELY, BUT SHALL BE INCLUDED IN THE CONTRACT UNIT PRICE FOR THE ITEM BEING INSTALLED.
 - PIPE CULVERTS #2 AND #3 SHALL BE INSTALLED 4'-9" CENTER TO CENTER (2'-3" OUTSIDE DIAMETER TO OUTSIDE DIAMETER).
 - END SECTIONS #3 AND #4 AND END SECTIONS #5 AND #6 SHALL BE PLACED SIDE-BY-SIDE LEAVING A 3" SPACE BETWEEN ADJACENT END SECTION WALLS. THE SPACE SHALL BE FILLED WITH CLASS SI CONCRETE. SEE HIGHWAY STANDARD 542001 FOR ADDITIONAL DETAILS.



USER NAME = mohammad.hamwi	DESIGNED -	REVISED -
	DRAWN -	REVISED -
PLOT SCALE = 100,0000' / in.	CHECKED -	REVISED -
PLOT DATE = 12/15/2022	DATE -	REVISED -

**STATE OF ILLINOIS
DEPARTMENT OF TRANSPORTATION**

**DRAINAGE PLAN AND PROFILE
LAKE COOK ROAD, EAST OF WALLINGFORD LANE**

SCALE: SHEET OF SHEETS STA. TO STA.

F.A. RTE.	SECTION	COUNTY	TOTAL SHEETS	SHEET NO.
VAR.	2020-191-R5	COOK & LAKE	29	16
CONTRACT NO. 62M65				
ILLINOIS FED. AID PROJECT				

EARTHWORK SCHEDULE								
1	2	3	4	5	6	7	8	9
LAKE COOK ROAD, EAST OF WALLINGFORD LANE	EARTH EXCAVATION (CU. YD.)	EMBANKMENT (CU. YD.)	EARTH EXCAVATION TO BE USED AS EMBANKMENT (ADJUSTED FOR SHRINKAGE AND a(5)) (CU. YD.)	EARTHWORK BALANCE SURPLUS (+) OR SHORTAGE (-) (CU. YD.)	TOPSOIL EXCAVATION (CU. YD.)	TOPSOIL REQUIRED (CU. YD.)	TOPSOIL EXCAVATION TO BE USED FOR LANDSCAPING (ADJUSTED FOR a(5)) (CU. YD.)	TOPSOIL BALANCE SURPLUS (+) OR SHORTAGE (-) (CU. YD.)
LT SIDE	24	85	20	-65	145	109	145	36
RT SIDE	5	80	4	-76	63	48	63	15
TOTAL =	29	165	24	-141	208	157	208	51

COLUMN 1: LOCATION FROM PLANS

COLUMN 2: CUT QUANTITIES FROM CROSS SECTIONS, WHICH DOES NOT INCLUDE UNSUITABLE MATERIAL OR TOPSOIL

COLUMN 3: FILL QUANTITIES FROM CROSS SECTIONS

COLUMN 4: EARTH EXCAVATION THAT IS TO BE USED AS EMBANKMENT, ADJUSTED FOR SHRINKAGE (SHRINKAGE FACTOR = 15%) AND DUE TO PRESENCE OF ARTICLE 669.05(A)(5) CONTAMINATED SITE PER "REMOVAL AND DISPOSAL OF REGULATED SUBSTANCES (PROJECT SPECIFIC)" SPECIAL PROVISION

COLUMN 5: COLUMN 4 - COLUMN 3

POSITIVE QUANTITY = EXTRA EXCAVATION

NEGATIVE QUANTITY = FURNISHED EXCAVATION NEEDED

COLUMN 6: TOPSOIL EXCAVATED TO A DEPTH OF 6" IN AREAS THAT SHALL BE DISTURBED BY PROPOSED WORK

COLUMN 7: TOPSOIL REQUIRED BASED ON AREA OF PROPOSED SEEDING (PLACED AT AREAS OF PROPOSED SEEDING AT A DEPTH OF 4")

COLUMN 8: TOPSOIL EXCAVATION THAT IS TO BE USED FOR LANDSCAPING, ADJUSTED DUE TO PRESENCE OF ARTICLE 669.05(A)(5) CONTAMINATED SITE PER "REMOVAL AND DISPOSAL OF REGULATED SUBSTANCES (PROJECT SPECIFIC)" SPECIAL PROVISION

COLUMN 9: COLUMN 8 - COLUMN 7

POSITIVE QUANTITY = EXTRA TOPSOIL

NEGATIVE QUANTITY = TOPSOIL FURNISH AND PLACE NEEDED

MODEL: Default
FILE: \\nafe.pw.usdnet-pw.bentley.com\PW\DOT\Documents\DOT Office\Dir\rdt - \Project\158920\Cadd\data\Design\10407 - Lake-Cook-est-hdr-plan.dgn

USER NAME = mohammad.hamwi	DESIGNED -	REVISED -
	DRAWN -	REVISED -
PLOT SCALE = 100,0000' / in.	CHECKED -	REVISED -
PLOT DATE = 12/15/2022	DATE -	REVISED -

**STATE OF ILLINOIS
DEPARTMENT OF TRANSPORTATION**

**EARTHWORK SCHEDULE
LAKE COOK ROAD, EAST OF WALLINGFORD LANE**

SCALE: SHEET OF SHEETS STA. TO STA.

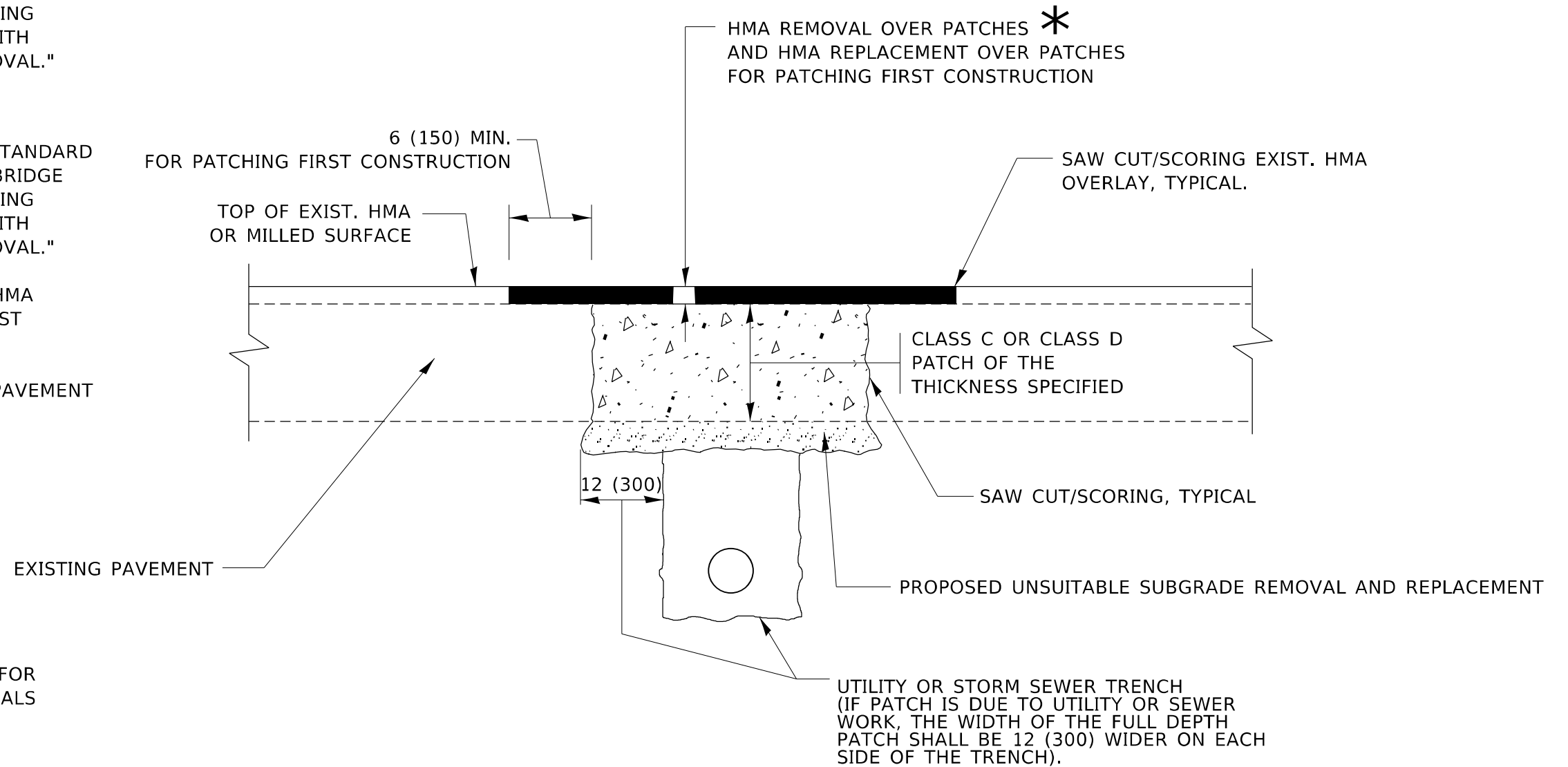
F.A. RTE.	SECTION	COUNTY	TOTAL SHEETS	SHEET NO.
VAR.	2020-191-R5	COOK & LAKE	29	17
			CONTRACT NO. 62M65	
			ILLINOIS FED. AID PROJECT	

METHOD OF MEASUREMENT

REFER TO SECTION 442 OF THE STANDARD SPECIFICATIONS FOR ROAD AND BRIDGE CONSTRUCTION AND THE RECURRING SPECIAL PROVISION "PATCHING WITH HOT-MIX ASPHALT OVERLAY REMOVAL."

BASIS OF PAYMENT

1. REFER TO SECTION 442 OF THE STANDARD SPECIFICATIONS FOR ROAD AND BRIDGE CONSTRUCTION AND THE RECURRING SPECIAL PROVISION "PATCHING WITH HOT-MIX ASPHALT OVERLAY REMOVAL."
2. SAW CUT/SCORING OF EXISTING HMA OVERLAY IS INCLUDED IN THE COST OF PAVEMENT PATCHING.
3. SAW CUT/SCORING OF EXISTING PAVEMENT IS INCLUDED IN THE COST OF PAVEMENT PATCHING.



* SEE TYPICAL SECTIONS FOR THICKNESS AND MATERIALS

SEQUENCE OF CONSTRUCTION (PATCHING FIRST)

1. REMOVE THE EXISTING HMA MATERIAL OVER THE AREA TO BE PATCHED.
2. REMOVE AND REPLACE WITH CLASS C OR D PATCH.
3. REPLACE HMA MATERIAL OVER THE AREA TO BE PATCHED.

SEQUENCE OF CONSTRUCTION (MILLING FIRST)

1. MILL HMA FIRST IF THERE IS AT LEAST 4½ INCHES OR MORE OF HMA MATERIAL ON TOP OF THE EXISTING PAVEMENT OR IF THE PAVEMENT IS FULL DEPTH HMA. A MINIMUM OF 2 INCHES OF HMA MATERIAL SHALL BE IN PLACE AFTER MILLING.
2. REMOVE AND REPLACE WITH FULL DEPTH CLASS D PATCHES TO TOP OF MILLED SURFACE.

ALL DIMENSIONS ARE IN INCHES (MILLIMETERS) UNLESS OTHERWISE SHOWN.

MODEL: Default FILE: hma15e.pxd Subject: hma15e.dwg User: mohammad.hamwi Date: 12/15/2022

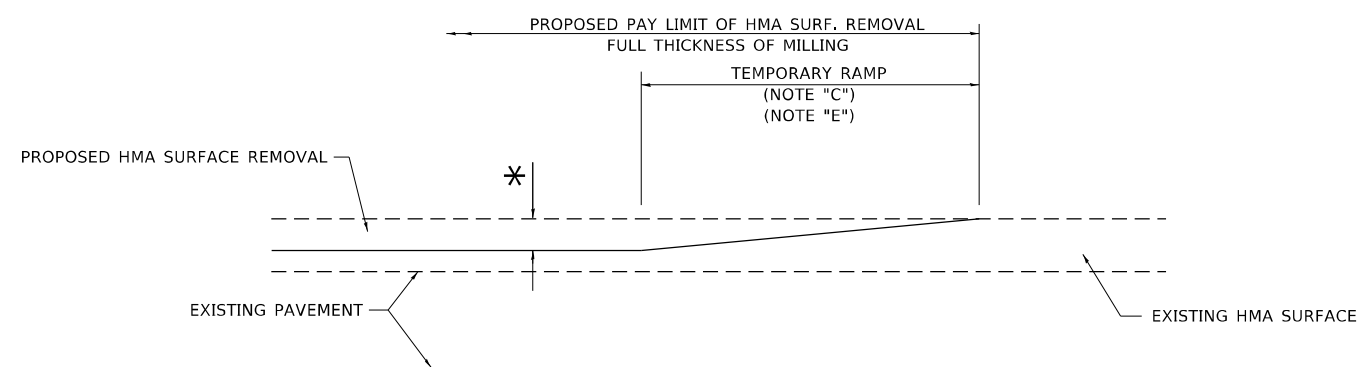
USER NAME = mohammad.hamwi	DESIGNED - R. SHAH	REVISED - R. BORO 01-01-07
	DRAWN -	REVISED - R. BORO 09-04-07
PLOT SCALE = 100,0000' / in.	CHECKED -	REVISED - K. ENG 10-27-08
PLOT DATE = 12/15/2022	DATE - 10-25-94	REVISED - K. SMITH 11-18-22

**STATE OF ILLINOIS
DEPARTMENT OF TRANSPORTATION**

**PAVEMENT PATCHING FOR
HMA SURFACED PAVEMENT**

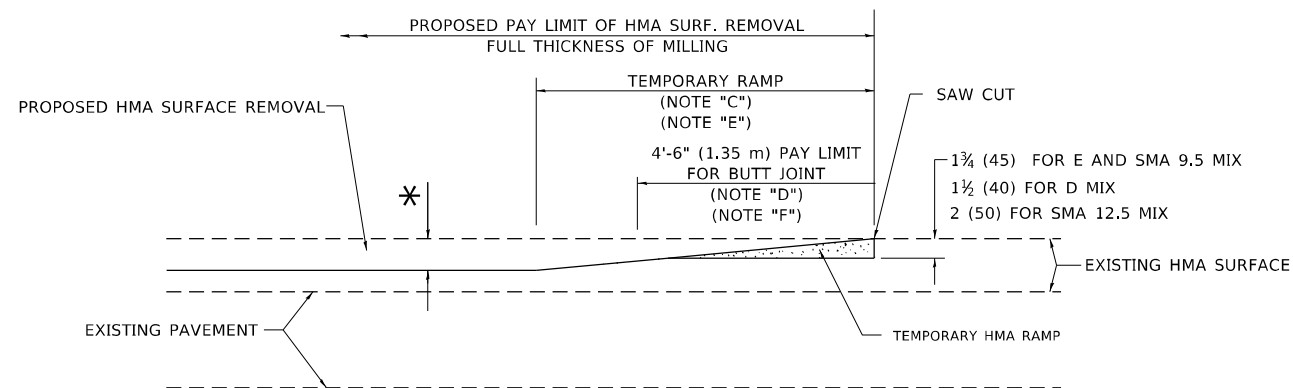
SCALE: NONE SHEET 1 OF 1 SHEETS STA. TO STA.

F.A.U. RTE.	SECTION	COUNTY	TOTAL SHEETS	SHEET NO.
VAR.	2020-191-R5	COOK LAKE	29	19
BD400-04 (BD-22)			CONTRACT NO. 62M65	
ILLINOIS FED. AID PROJECT				



MILLED TEMPORARY RAMP
(FOR BUTT JOINT AND HMA TAPER SEE DETAIL BELOW)

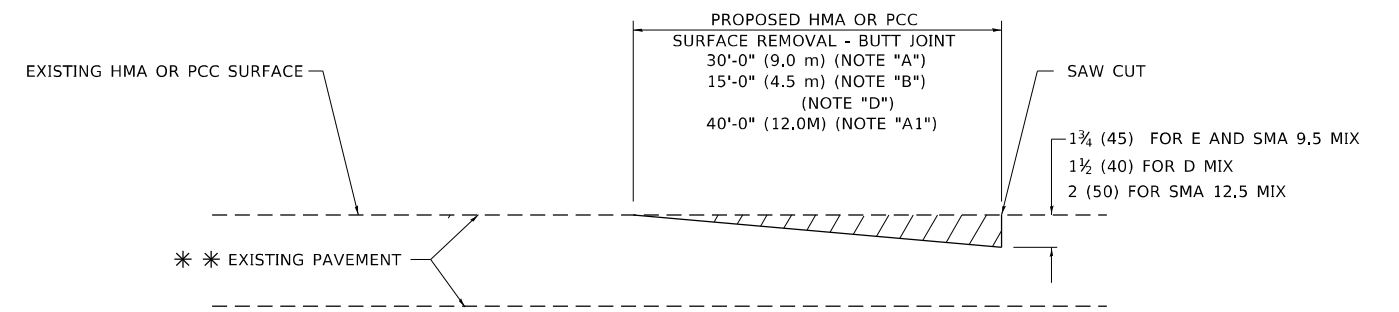
OPTION 1



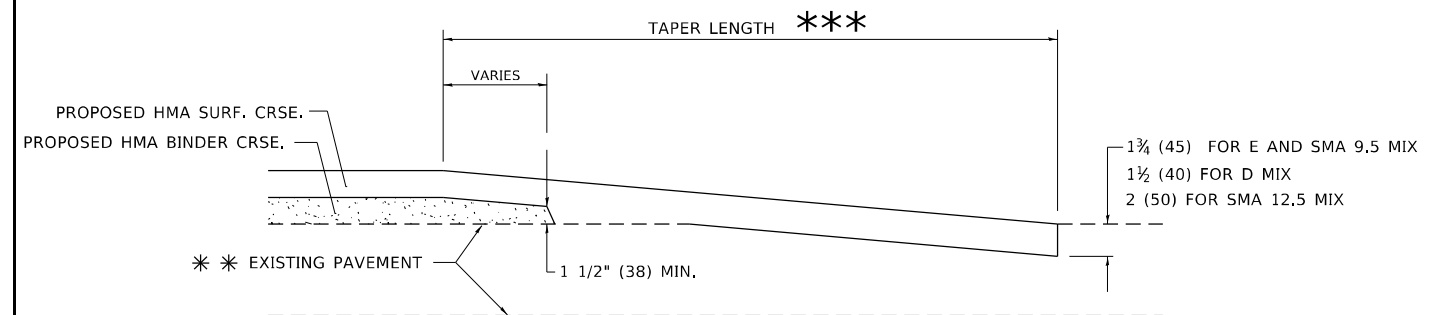
HMA CONSTRUCTED TEMPORARY RAMP
(FOR BUTT JOINT AND HMA TAPER SEE DETAIL BELOW)

OPTION 2

TYPICAL TEMPORARY RAMP



BUTT JOINT DETAIL



HMA TAPER DETAIL

TYPICAL BUTT JOINT AND HMA TAPER FOR RESURFACING ONLY

*** PC CONCRETE, HMA OR HMA RESURFACED PAVEMENT.

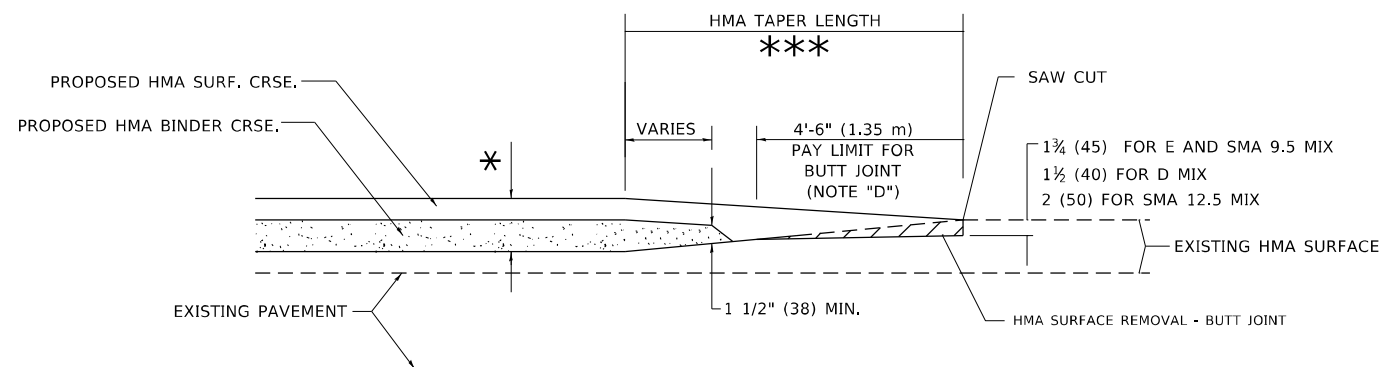
GENERAL NOTES

- A. MAINLINE ARTERIAL ROADWAYS AND MAJOR SIDE ROADS.
- A1. INTERSTATES
- B. MINOR SIDE ROADS.
- C. THE TEMP. RAMP SHALL BE CONSTRUCTED IMMEDIATELY UPON REMOVAL OF THE EXISTING HMA SURFACE.
- D. THE BUTT JOINT SHALL BE CONSTRUCTED IMMEDIATELY PRIOR TO PLACING THE PROPOSED HMA COURSES.
- E. TAPER THE TEMP. RAMP AT A RATE OF 3' - 4" (1.02m) PER 1 INCH (25 mm) OF MILLING THICKNESS.
* SEE TYPICAL SECTIONS FOR MILLING THICKNESS.
- F. SEE ARTICLE 406.08 AND 406.14 OF THE STANDARD SPECIFICATIONS FOR "HMA AND/OR PCC SURFACE REMOVAL, BUTT JOINT".
*** 20'-0" (6.1 m) PER 1 (25) RESURFACING (NOTE "A")
10'-0" (3.0 m) PER 1 (25) RESURFACING (NOTE "B")

BASIS OF PAYMENT

- 1. THE BUTT JOINT WILL BE PAID FOR AT THE CONTRACT UNIT PRICE PER SQUARE YARD (SQUARE METER) FOR "HOT-MIX ASPHALT SURFACE REMOVAL - BUTT JOINT" OR FOR "PORTLAND CEMENT CONCRETE SURFACE REMOVAL- BUTT JOINT".
- 2. THE TEMPORARY RAMP AND SAW CUT SHALL BE INCLUDED IN THE UNIT COST FOR HMA OR PCC SURFACE REMOVAL-BUTT JOINT.

ALL DIMENSIONS ARE IN INCHES (MILLIMETERS) UNLESS OTHERWISE SHOWN.



BUTT JOINT AND HMA TAPER

TYPICAL BUTT JOINT AND HMA TAPER FOR MILLING AND RESURFACING

MODEL: Default
FILE: hma12.pwd
PROJECT: h:\projects\1186920\CADD\data\Design\BtJStc.dgn

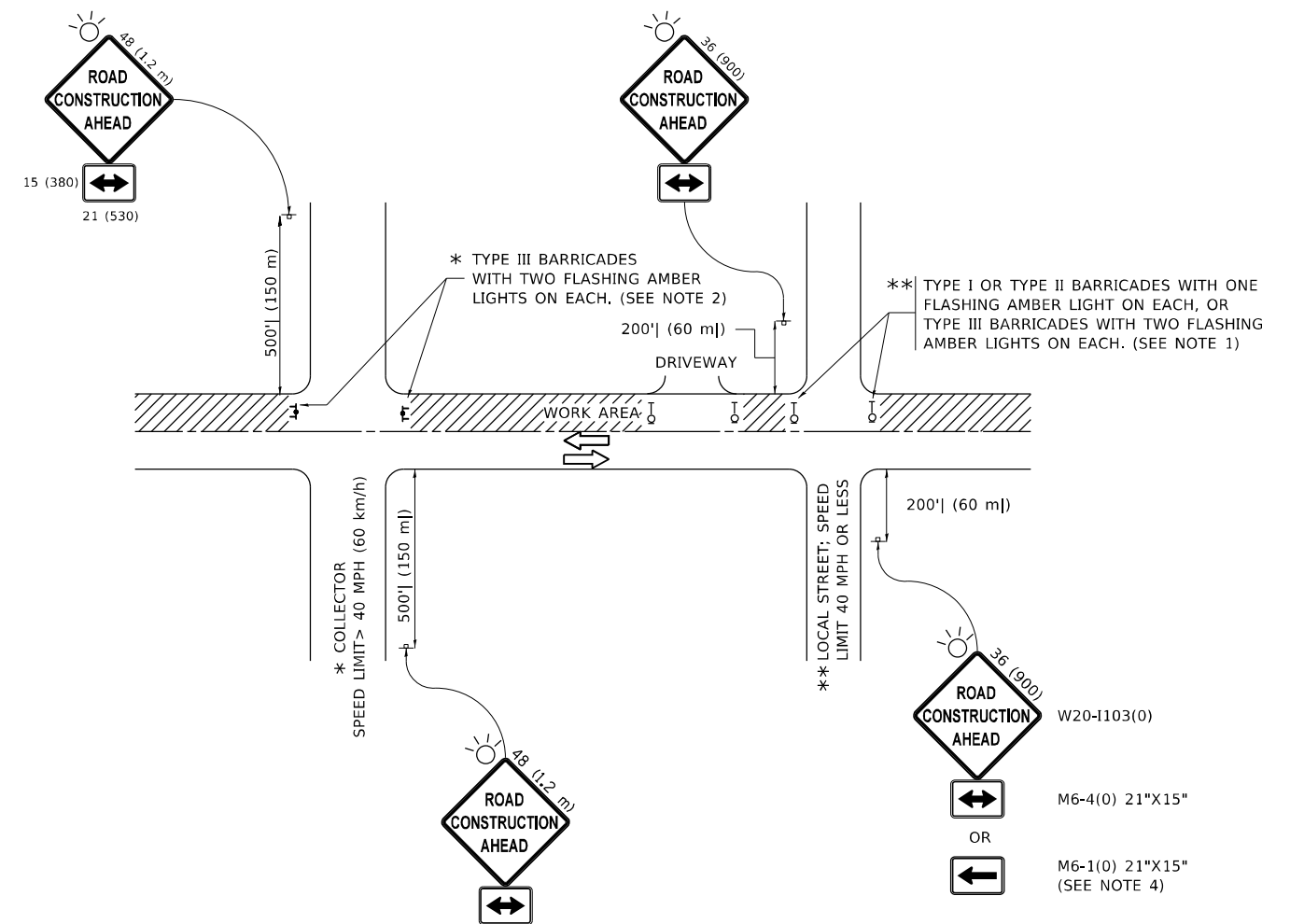
USER NAME = mohammad.hamwi	DESIGNED - M. DE YONG	REVISED - A. ABBAS 03-21-97
	DRAWN -	REVISED - M. GOMEZ 04-06-01
PLOT SCALE = 100,0000' / in.	CHECKED -	REVISED - R. BORO 01-01-07
PLOT DATE = 12/15/2022	DATE - 06-13-90	REVISED - K. SMITH 11-18-22

STATE OF ILLINOIS
DEPARTMENT OF TRANSPORTATION

BUTT JOINT AND
HMA TAPER DETAILS

SCALE: NONE SHEET 1 OF 1 SHEETS STA. TO STA.

F.A.U. RTE.	SECTION	COUNTY	TOTAL SHEETS	SHEET NO.
VAR.	2020-191-R5	COOK LAKE	29	21
BD400-05 BD-32		CONTRACT NO. 62M65		
ILLINOIS FED. AID PROJECT				



NOTES:

- SIDE ROAD WITH A SPEED LIMIT OF 40 MPH (60 km/h) OR LESS AS SHOWN ON THE DRAWING AND AS DIRECTED BY THE ENGINEER:
 - ONE "ROAD CONSTRUCTION AHEAD" SIGN 36 x 36 (900x900) WITH A FLASHER MOUNTED ON IT APPROXIMATELY 200' (60 m) IN ADVANCE OF THE MAIN ROUTE.
 - THE CLOSED PORTION OF THE MAIN ROUTE SHALL BE PROTECTED BY BLOCKING WITH TYPE I, TYPE II OR TYPE III BARRICADES, 1/3 OF THE CROSS SECTION OF THE CLOSED PORTION.
- SIDE ROAD WITH A SPEED LIMIT GREATER THAN 40 MPH (60 km/h) AS SHOWN ON THE DRAWING AND AS DIRECTED BY THE ENGINEER:
 - ONE "ROAD CONSTRUCTION AHEAD" SIGN 48 x 48 (1.2 m x 1.2 m) WITH A FLASHER MOUNTED ON IT APPROXIMATELY 500' (150 m) IN ADVANCE OF THE MAIN ROUTE.
 - THE CLOSED PORTION OF THE MAIN ROUTE SHALL BE PROTECTED BY BLOCKING WITH TYPE III BARRICADES, 1/2 OF THE CROSS SECTION OF THE CLOSED PORTION.
- CONES MAY BE SUBSTITUTED FOR BARRICADES OR DRUMS AT HALF THE SPACING DURING DAY OPERATIONS. CONES SHALL BE A MINIMUM OF 28 (710) IN HEIGHT.
- SIGNING AND THE WORK ZONE, A SINGLE HEADED ARROW (M6-1) SHALL BE USED IN LIEU OF THE DOUBLE HEADED ARROW (M6-4).
- WHEN WORK IS BEING PERFORMED ON A SIDE ROAD OR DRIVEWAY, FOLLOW THE APPLICABLE STANDARD(S). THE DIRECTIONAL ARROW (M6-1 OR M6-4) SHALL BE COVERED OR REMOVED WHEN NO LONGER CONSISTENT WITH THE TRAFFIC CONTROL SET-UP.
- ADVANCE WARNING SIGNS ARE TO BE OMITTED ON DRIVEWAYS UNLESS OTHERWISE SPECIFIED IN THE PLANS OR BY THE ENGINEER.
- THE TRAFFIC CONTROL AND PROTECTION FOR SIDE ROADS, INTERSECTIONS, AND DRIVEWAYS SHALL BE INCLUDED IN THE COST OF SPECIFIED TRAFFIC CONTROL STANDARDS OR ITEMS.

All dimensions are in inches (millimeters) unless otherwise shown.

MODEL: Default
FILE NAME: p:\bulletect-pw-beadefw.com\FW\DOT\Documents\DOT Office\Dir\rdet_1\Project\158920\CADD\ata\Design\BtFStEd.dgn

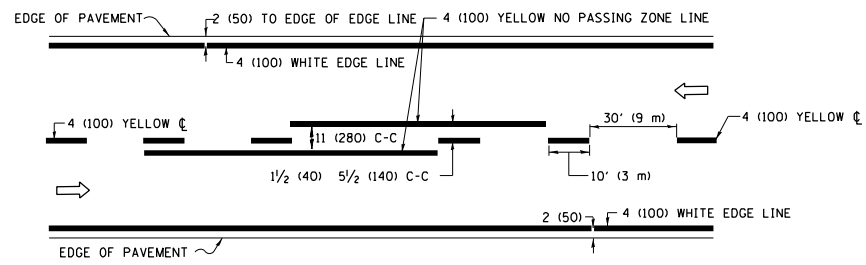
USER NAME = mohammad.hamwi	DESIGNED - L.H.A.	REVISED - A. HOUSEH 10-15-96
PLOT SCALE = 100,0000' / in.	CHECKED -	REVISED - T. RAMMACHER 01-06-00
PLOT DATE = 12/15/2022	DATE - 06-89	REVISED - A. SCHUETZE 07-01-13
		REVISED - A. SCHUETZE 09-15-16

**STATE OF ILLINOIS
DEPARTMENT OF TRANSPORTATION**

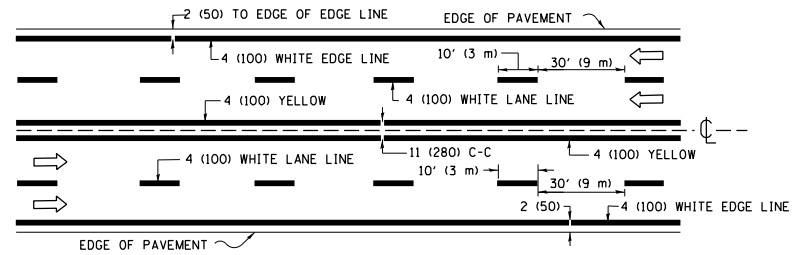
**TRAFFIC CONTROL AND PROTECTION FOR
SIDE ROADS, INTERSECTIONS, AND DRIVEWAYS**

SCALE: NONE SHEET 1 OF 1 SHEETS STA. TO STA.

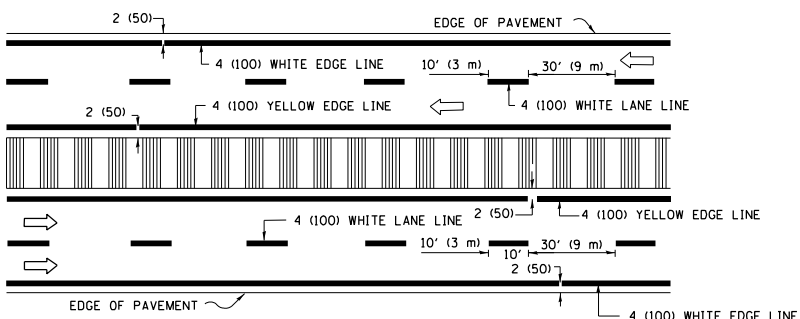
F.A.U. RTE.	SECTION	COUNTY	TOTAL SHEETS	SHEET NO.
VAR.	2020-191-R5	COOK LAKE	29	22
TC-10			CONTRACT NO. 62M65	
ILLINOIS FED. AID PROJECT				



2-LANE ROADWAY

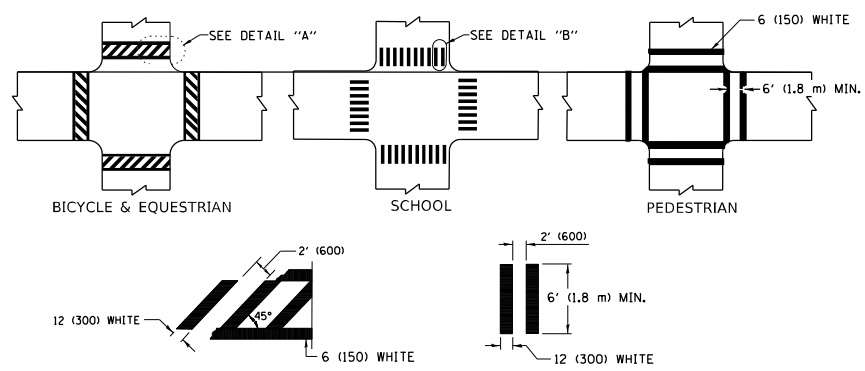


MULTI-LANE UNDIVIDED



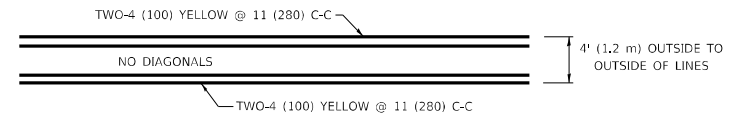
MULTI-LANE DIVIDED WITH MEDIAN

TYPICAL LANE AND EDGE LINE MARKING

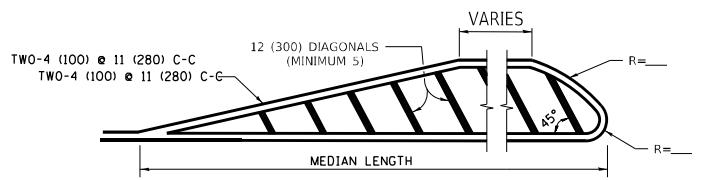


TYPICAL CROSSWALK MARKING

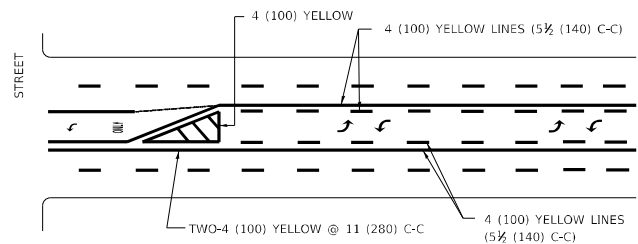
* MARKINGS SHALL BE INSTALLED PARALLEL TO THE CENTERLINE OF THE ROAD WHICH IT CROSSES



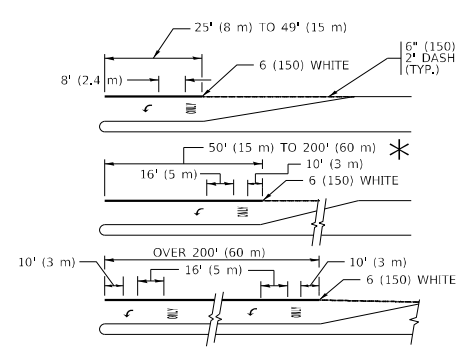
4' (1.2 m) WIDE MEDIANS ONLY



MEDIANS OVER 4' (1.2 m) WIDE



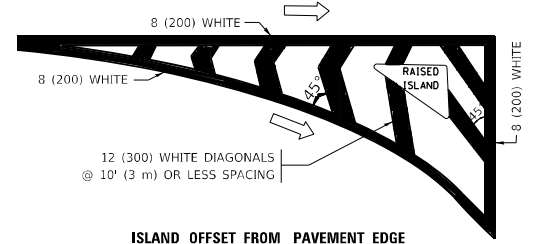
MEDIAN WITH TWO-WAY LEFT TURN LANE TYPICAL PAINTED MEDIAN MARKING



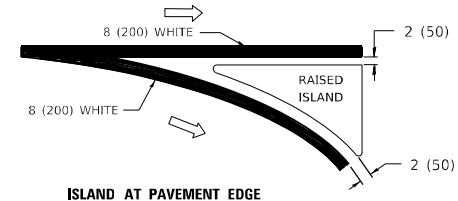
TYPICAL LEFT (OR RIGHT) TURN LANE TYPICAL TURN LANE MARKING

FULL SIZE LETTERS 8" (2.4 m) AND ARROWS SHALL BE USED. AREA = 15.6 SQ. FT. (1.5 m²) ONLY AREA = 20.8 SQ. FT. (1.9 m²)

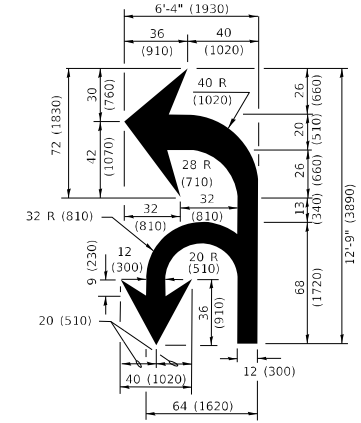
* TURN LANES IN EXCESS OF 400' (120 m) IN LENGTH MAY HAVE AN ADDITIONAL SET OF ARROW - "ONLY" INSTALLED MIDWAY BETWEEN THE OTHER TWO SETS OF ARROW - "ONLY".



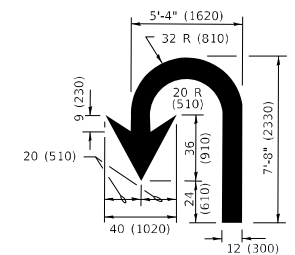
ISLAND OFFSET FROM PAVEMENT EDGE



ISLAND AT PAVEMENT EDGE TYPICAL ISLAND MARKING



COMBINATION LEFT AND U-TURN



U-TURN

LANE REDUCTION TRANSITION
* LANE REDUCTION ARROWS REQUIRED AT SPEEDS OF 45 MPH OR GREATER OR WHEN SPECIFIED IN PLANS.

D(FT)	SPEED LIMIT
345	30
425	35
500	40
580	45
665	50
750	55

TYPE OF MARKING	WIDTH OF LINE	PATTERN	COLOR	SPACING / REMARKS
CENTERLINE ON 2 LANE PAVEMENT	4 (100)	SKIP-DASH	YELLOW	10' (3 m) LINE WITH 30' (9 m) SPACE
CENTERLINE ON MULTI-LANE UNDIVIDED PAVEMENT	2 @ 4 (100)	SOLID	YELLOW	11 (280) C-C
NO PASSING ZONE LINES: FOR ONE DIRECTION FOR BOTH DIRECTIONS	4 (100) 2 @ 4 (100)	SOLID SOLID	YELLOW YELLOW	5 1/2 (140) C-C FROM SKIP-DASH CENTERLINE 11 (280) C-C OMIT SKIP-DASH CENTERLINE BETWEEN
LANE LINES	4 (100) 5 (125) ON FREEWAYS	SKIP-DASH SKIP-DASH	WHITE WHITE	10' (3 m) LINE WITH 30' (9 m) SPACE
DOTTED LINES (EXTENSIONS OF CENTER, LANE OR TURN LANE MARKINGS)	SAME AS LINE BEING EXTENDED	SKIP-DASH	SAME AS LINE BEING EXTENDED	2' (600) LINE WITH 6' (1.8 m) SPACE
EDGE LINES	4 (100)	SOLID	YELLOW-LEFT WHITE-RIGHT	OUTLINE MEDIANS IN YELLOW
TURN LANE MARKINGS	6 (150) LINE; FULL SIZE LETTERS & SYMBOLS (8" (2.4m))	SOLID	WHITE	SEE TYPICAL TURN LANE MARKING DETAIL
TWO WAY LEFT TURN MARKING	2 @ 4 (100) EACH DIRECTION 8' (2.4m) LEFT ARROW	SKIP-DASH AND SOLID IN PAIRS	YELLOW WHITE	10' (3 m) LINE WITH 30' (9 m) SPACE FOR SKIP-DASH; 5 1/2 (140) C-C BETWEEN SOLID LINE AND SKIP-DASH LINE SEE TYPICAL TWO-WAY LEFT TURN MARKING DETAIL
CROSSWALK LINES (PEDESTRIAN) A. DIAGONALS (BIKE & EQUESTRIAN) B. LONGITUDINAL BARS (SCHOOL)	2 @ 6 (150) 12 (300) @ 45° 12 (300) @ 90°	SOLID SOLID SOLID	WHITE WHITE WHITE	NOT LESS THAN 6' (1.8 m) APART 2' (600) APART SEE TYPICAL CROSSWALK MARKING DETAILS.
STOP LINES	24 (600)	SOLID	WHITE	PLACE 4' (1.2 m) IN ADVANCE OF AND PARALLEL TO CROSSWALK, IF PRESENT. OTHERWISE, PLACE AT DESIRED STOPPING POINT, PARALLEL TO CROSSROAD CENTERLINE, WHERE POSSIBLE
PAINTED MEDIANS	2 @ 4 (100) WITH 12 (300) DIAGONALS @ 45° NO DIAGONALS USED FOR 4' (1.2 m) WIDE MEDIANS	SOLID	YELLOW: TWO WAY TRAFFIC WHITE: ONE WAY TRAFFIC	11 (280) C-C FOR THE DOUBLE LINE SEE TYPICAL PAINTED MEDIAN MARKING.
GORE MARKING AND CHANNELIZING LINES	8 (200) WITH 12 (300) DIAGONALS @ 45°	SOLID	WHITE	DIAGONALS: 15' (4.5 m) C-C (LESS THAN 30MPH (50 km/h)) 20' (6 m) C-C 30MPH (50 km/h) TO 45MPH (70 km/h) 30' (9 m) C-C (OVER 45MPH (70 km/h))
RAILROAD CROSSING	24 (600) TRANSVERSE LINES: "RR" IS 8' (1.8 m) LETTERS: 16 (400) LINE FOR "X"	SOLID	WHITE	SEE STATE STANDARD 780001 AREA OF: "R"=3.6 SQ. FT. (0.33 m ²) EACH "X"=54.0 SQ. FT. (5.0 m ²)
SHOULDER DIAGONALS (REQUIRED FOR SHOULDERS > 8')	12 (300) @ 45°	SOLID	WHITE - RIGHT YELLOW - LEFT	50' (15 m) C-C (LESS THAN 30MPH (50 km/h)) 75' (25 m) C-C 30 MPH (50 km/h) TO 45MPH (70 km/h) 150' (45 m) C-C (OVER 45MPH (70 km/h))
U TURN ARROW	SEE DETAIL	SOLID	WHITE	16.3 SF
2 ARROW COMBINATION LEFT AND U TURN	SEE DETAIL	SOLID	WHITE	30.4 SF

FOR FURTHER DETAILS ON PAVEMENT MARKING REFER TO STANDARD SPECIFICATIONS FOR ROAD AND BRIDGE CONSTRUCTION AND STATE STANDARD 780001.

All dimensions are in inches (millimeters) unless otherwise shown.

MODEL - Default FILE NAME - p:\project-pw-benefits.com\p\INDOT\Documents\DOT Office\DistDirct - \p\project\158920\CADD\data\Design\DistESL.dgn

USER NAME = mohammad.hamwi	DESIGNED - EVERS	REVISED - C. JUCIUS 09-09-09
PLOT SCALE = 100,0000' / in.	CHECKED -	REVISED - C. JUCIUS 07-01-13
PLOT DATE = 12/15/2022	DATE - 03-19-90	REVISED - C. JUCIUS 12-21-15
		REVISED - C. JUCIUS 04-12-16

STATE OF ILLINOIS DEPARTMENT OF TRANSPORTATION

DISTRICT ONE TYPICAL PAVEMENT MARKINGS

SCALE: NONE	SHEET 1 OF 2 SHEETS	STA. TO STA.
-------------	---------------------	--------------

F.A.U. RTE.	SECTION	COUNTY	TOTAL SHEETS	SHEET NO.
VAR.	2020-191-R5	COOK LAKE	29	24
TC-13		CONTRACT NO. 62M65		
ILLINOIS		FED. AID PROJECT		

TURN BAY ENTRANCE AT START OF LANE CLOSURE TAPER

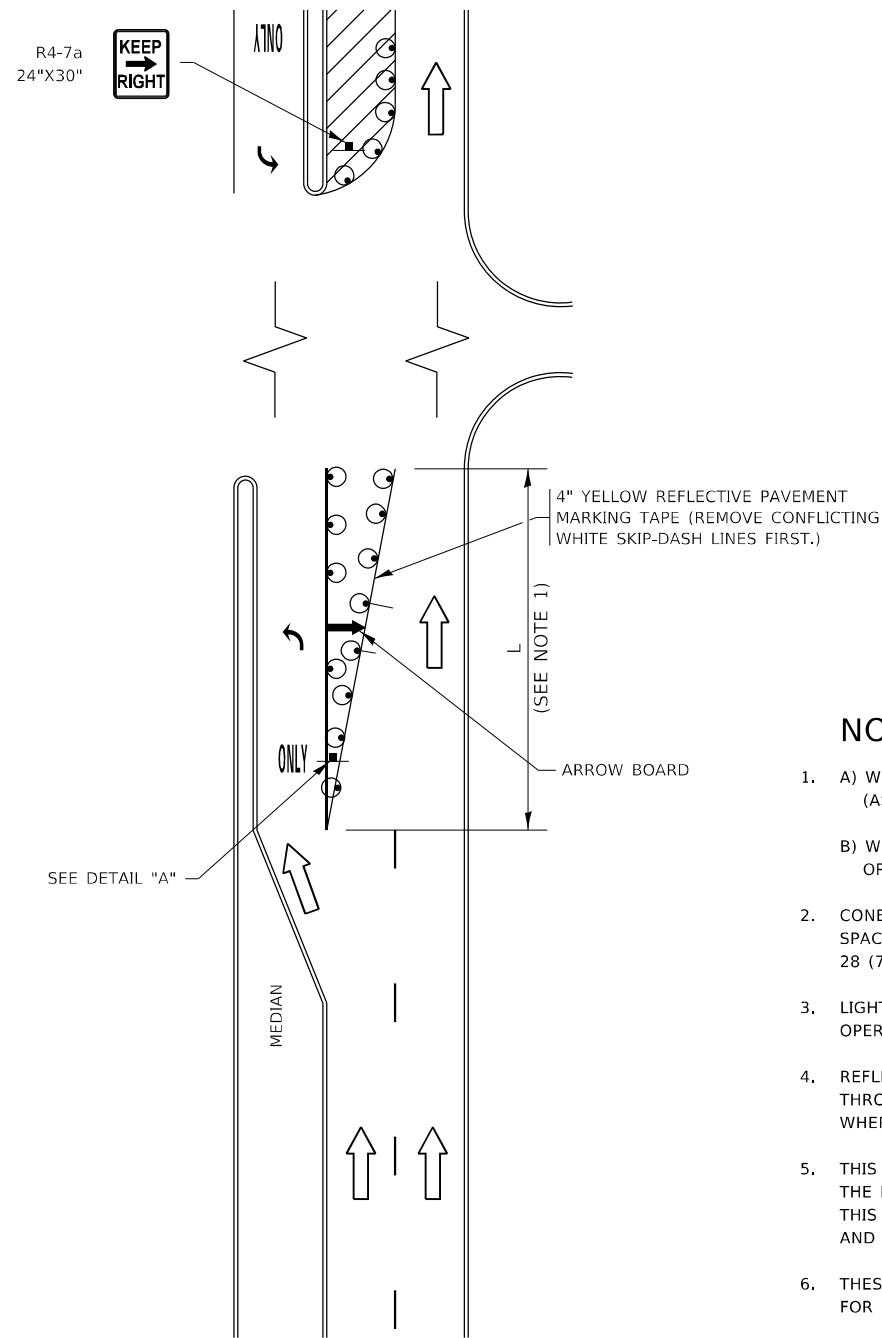


FIGURE 1

TURN BAY ENTRANCE WITHIN A LANE CLOSURE

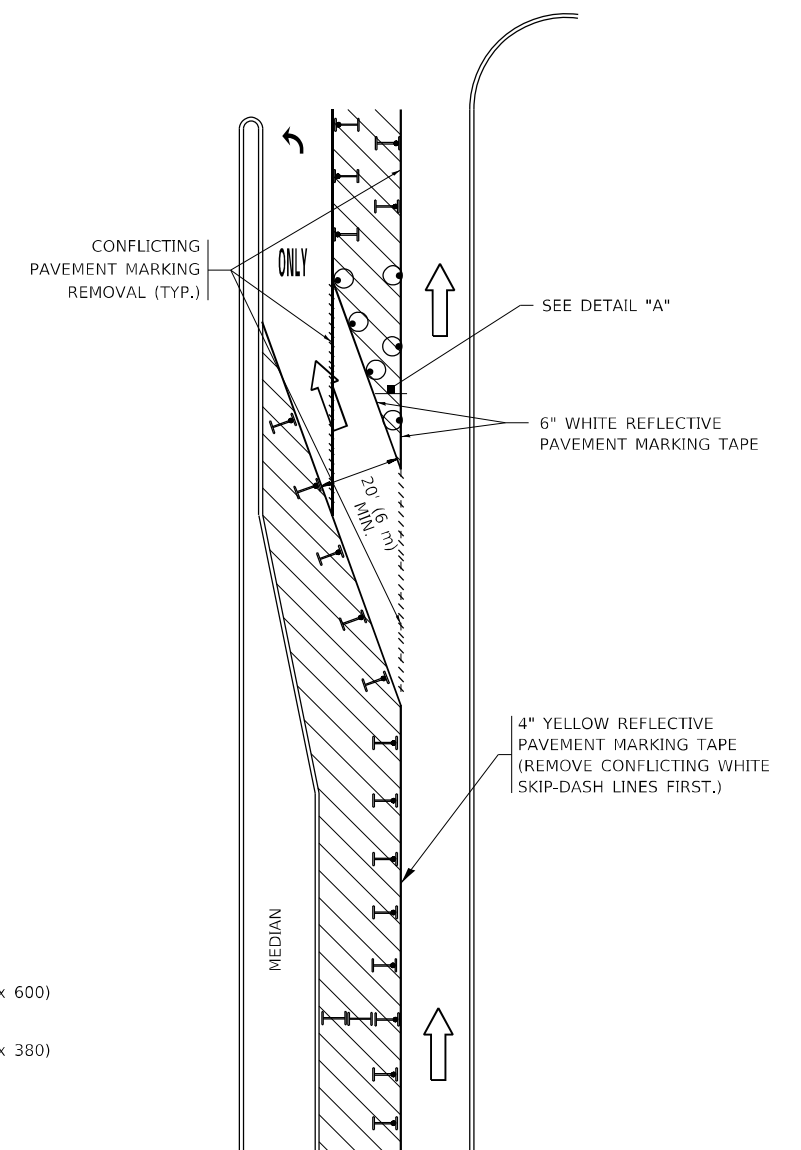


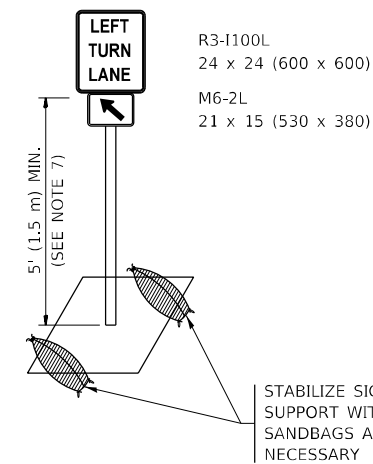
FIGURE 2

LEGEND

- WORK AREA
- LANE OPEN TO TRAFFIC
- ARROW BOARD
- TYPE I OR II BARRICADE OR DRUM WITH STEADY BURN LIGHT
- DRUM WITH STEADY BURN LIGHT
- SIGN ASSEMBLY
- TYPE I OR II CHECK BARRICADE WITH FLASHING LIGHT

NOTES:

1. A) WHEN "L" IS \leq THE STORAGE LENGTH OF THE TURN LANE (AS SHOWN IN FIG. 1), USE FIGURE 1.
B) WHEN "L" IS $>$ THE STORAGE LENGTH OF THE TURN LANE OR THE TURN LANE IS WITHIN THE LANE CLOSURE, USE FIGURE 2.
2. CONES MAY BE SUBSTITUTED FOR BARRICADES OR DRUMS AT HALF THE SPACING DURING DAY OPERATIONS. CONES SHALL BE A MINIMUM OF 28 (710) IN HEIGHT.
3. LIGHTS WILL NOT BE REQUIRED ON BARRICADES OR DRUMS FOR DAY OPERATIONS. ALL LIGHTS SHALL BE MONODIRECTIONAL.
4. REFLECTIVE TEMPORARY PAVEMENT MARKINGS SHALL BE PLACED THROUGHOUT THE BARRICADED AREAS OF EACH TURN BAY AS SHOWN WHERE THE CLOSURE TIME IS GREATER THAN FOURTEEN (14) DAYS.
5. THIS APPLICATION ALSO APPLIES WHEN WORK IS BEING PERFORMED IN THE RIGHT LANE(S) AND THE RIGHT TURN BAY IS TO REMAIN OPEN. UNDER THIS CONDITION, "RIGHT TURN LANE" R3-1100R 24 x 24 (600 x 600) AND M6-2R 21 x 15 (530 x 380) SHALL BE USED.
6. THESE CONTROLS SHALL SUPPLEMENT MAINLINE TRAFFIC CONTROL FOR LANE CLOSURES.
7. THE SIGNS SHALL BE MOUNTED ABOVE THE BARRICADES/DRUMS ON SEPARATE SIGN SUPPORTS THAT MEET NCHRP 350 OR MASH REQUIREMENTS.
8. TRAFFIC CONTROL AND PROTECTION AT TURN BAYS (TO REMAIN OPEN TO TRAFFIC) SHALL BE INCLUDED IN THE COST OF SPECIFIED TRAFFIC CONTROL STANDARDS OR ITEMS.



DETAIL A

All dimensions are in inches (millimeters) unless otherwise shown.

MODEL: Default
FILE: h:\m6\p\subject-pw-bentley.com\p\w\dot\Documents\DOT Office\Dir\rdt_1\Project\158920\CADD\data\Design\BentSt.dgn

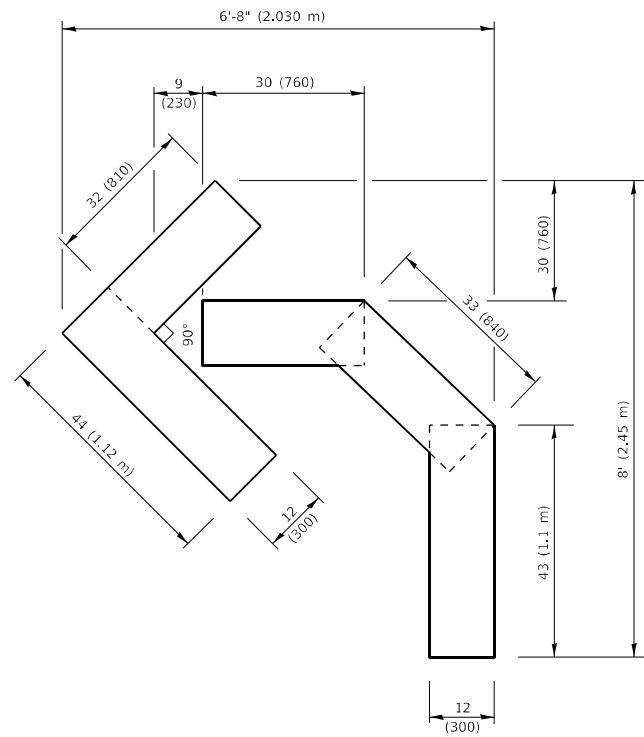
USER NAME = mohammad.hamwi	DESIGNED - T. RAMMACHER 09-08-94	REVISED - R. BORO 09-14-09
	DRAWN - A. HOUSEH 11-07-95	REVISED - A. SCHUETZE 07-01-13
PLOT SCALE = 100,0000' / in.	CHECKED - A. HOUSEH 10-12-96	REVISED - A. SCHUETZE 09-15-16
PLOT DATE = 12/15/2022	DATE - T. RAMMACHER 01-06-00	REVISED -

**STATE OF ILLINOIS
DEPARTMENT OF TRANSPORTATION**

**TRAFFIC CONTROL AND PROTECTION AT TURN BAYS
(TO REMAIN OPEN TO TRAFFIC)**

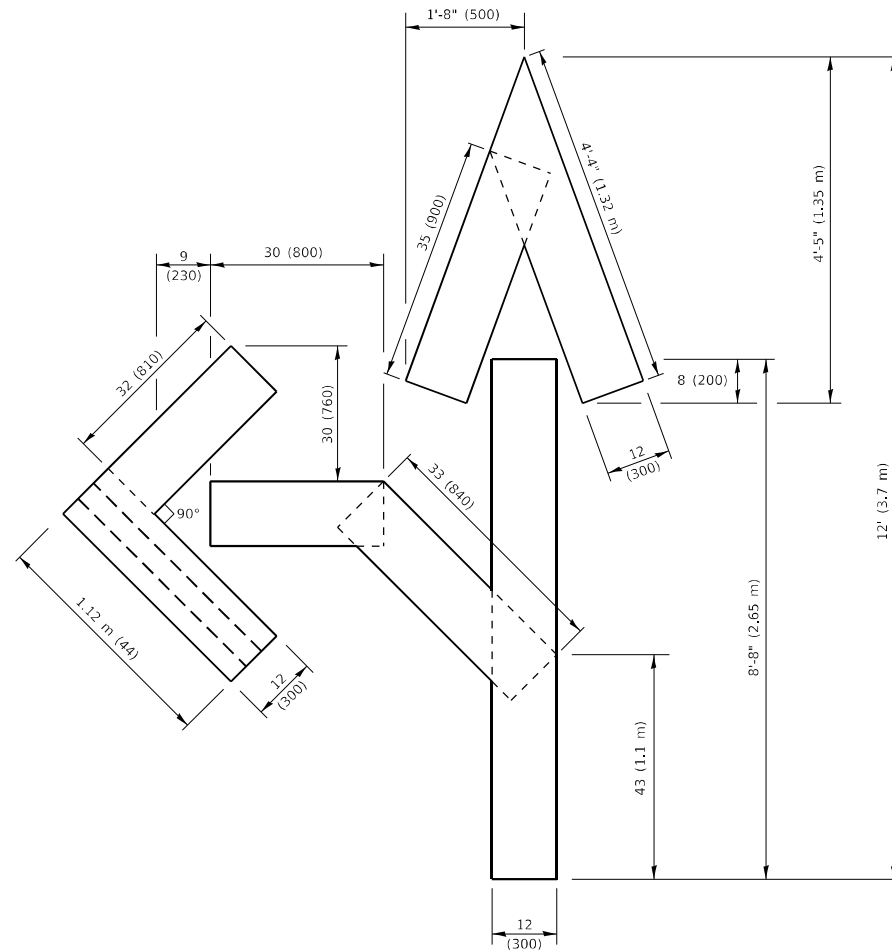
SCALE: NONE SHEET 1 OF 1 SHEETS STA. TO STA.

F.A.U. RTE.	SECTION	COUNTY	TOTAL SHEETS	SHEET NO.
VAR.	2020-191-R5	COOK LAKE	29	25
TC-14		CONTRACT NO. 62M65		
ILLINOIS FED. AID PROJECT				



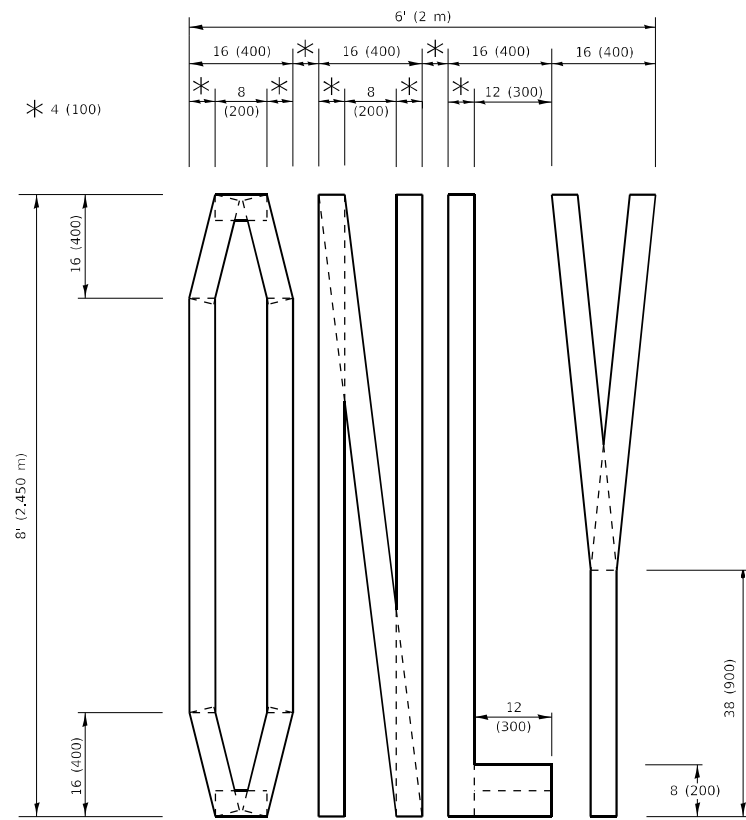
QUANTITY

4 (100) LINE = 45.5 ft. (13.9 m)
15.2 sq. ft. (1.41 sq. m)



QUANTITY

4 (100) LINE = 82.5 ft. (25.1 m)
27.5 sq. ft. (2.53 sq. m)

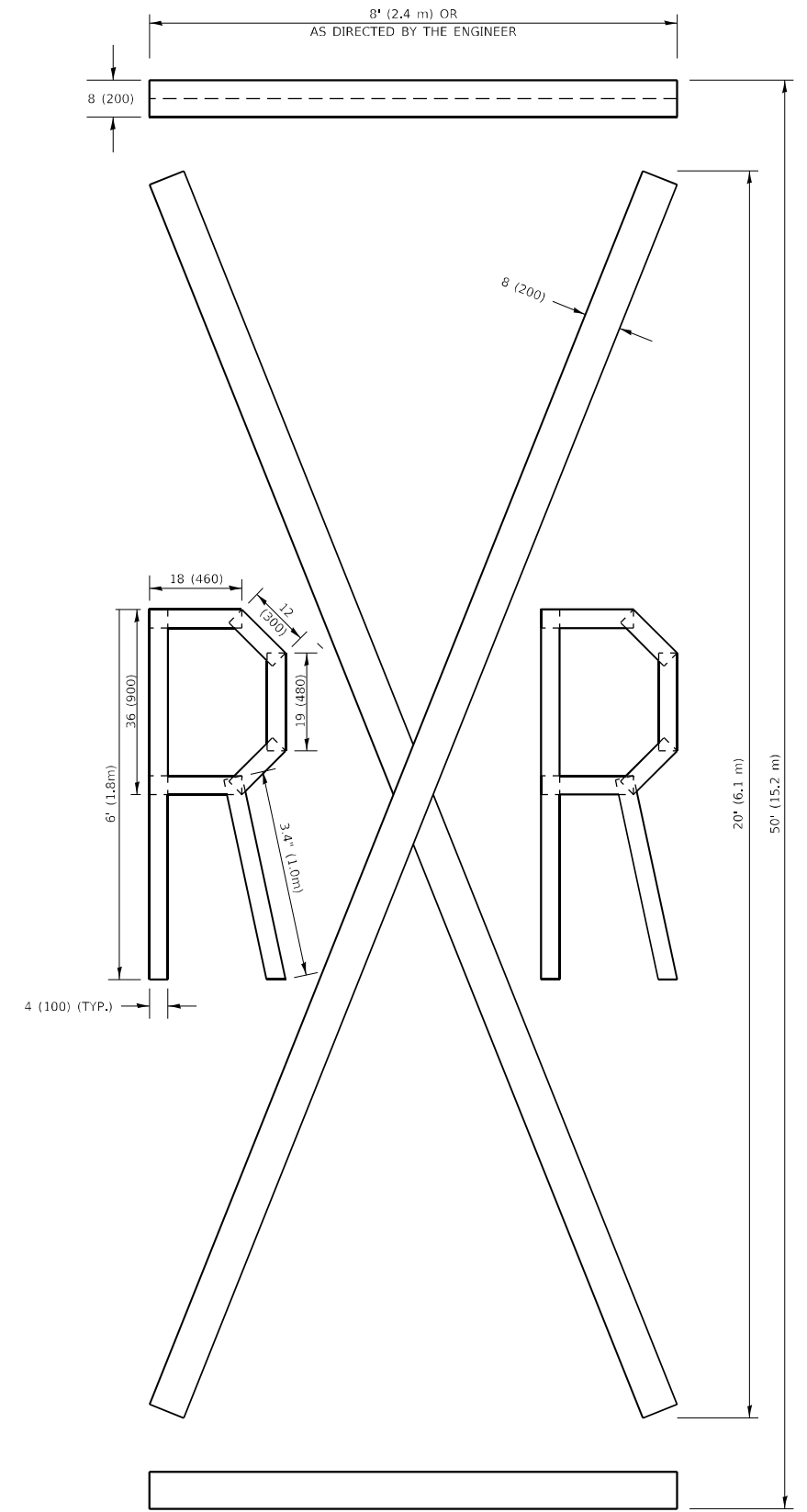


QUANTITY

4 (100) LINE = 64.1 ft. (19.5 m)
21.4 sq. ft. (1.99 sq. m)

NOTE:

ALL QUANTITIES OF PLACEMENT ARE REPRESENTED IN LINEAR FEET OF 4" LINES TO MATCH THE 4" TEMPORARY TAPE PAY ITEM AND REPRESENTS THE TOTAL QUANTITY OF 4" TAPE REQUIRED.



QUANTITY

4 (100) LINE = 225.9 ft. (68.9 m)
75.3 sq. ft. (6.99 sq. m)

All dimensions are in inches (millimeters) unless otherwise shown.

MODEL: Default
FILE NAME: p:\ultra-caw-bead-fay.com\PIV\DOT\Documents\DOT Office\District: 1\Project\158920\CADD\DATA\Design\Bkfst.dgn

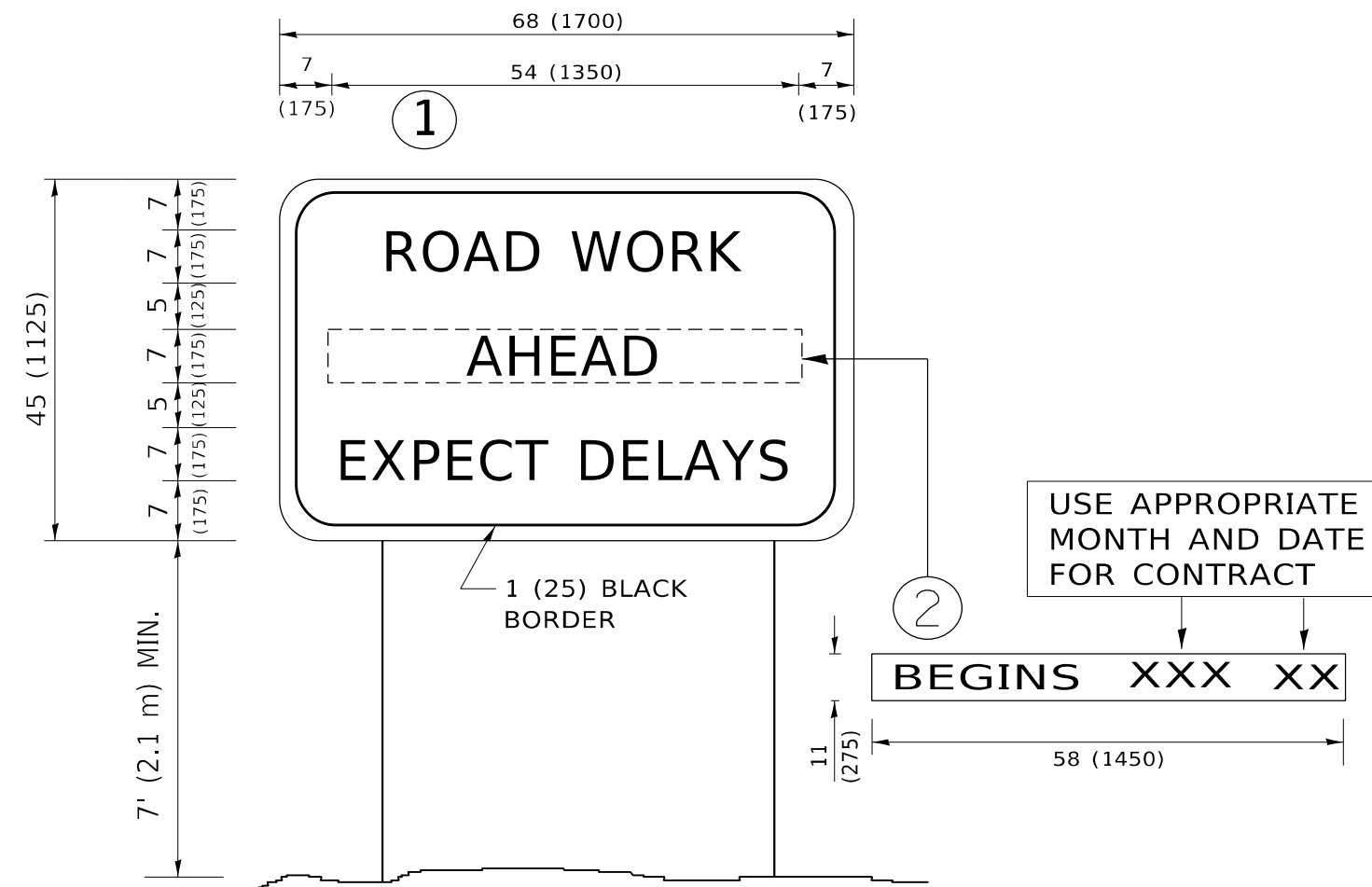
USER NAME = mohammad.hamwi	DESIGNED -	REVISED - T. RAMMACHER 03-02-98
	DRAWN -	REVISED - E. GOMEZ 08-28-00
PLOT SCALE = 100,0000 ' / in.	CHECKED -	REVISED - E. GOMEZ 08-28-00
PLOT DATE = 12/15/2022	DATE - 09-18-94	REVISED - A. SCHUETZE 09-15-16

**STATE OF ILLINOIS
DEPARTMENT OF TRANSPORTATION**

SHORT TERM PAVEMENT MARKING LETTERS AND SYMBOLS

SCALE: NONE SHEET 1 OF 1 SHEETS STA. TO STA.

F.A.U RTE.	SECTION	COUNTY	TOTAL SHEETS	SHEET NO.
VAR.	2020-191-R5	COOK LAKE	29	26
TC-16		CONTRACT NO. 62M65		
ILLINOIS FED. AID PROJECT				



NOTES:

1. USE BLACK LETTERING ON ORANGE BACKGROUND.
2. ERECT SIGNS IN ADVANCE OF THE LOCATION FOR THE "ROAD CONSTRUCTION AHEAD" SIGN AT LOCATIONS AS DIRECTED BY THE ENGINEER.
3. ERECT SIGN ① WITH INSTALLED PANEL ② ONE WEEK PRIOR TO THE START OF CONSTRUCTION.
4. REMOVE PANEL ② SOON AFTER THE START OF CONSTRUCTION.
5. SEE SPECIAL PROVISION FOR "TEMPORARY INFORMATION SIGNING" FOR ADDITIONAL INFORMATION.
6. ONE SIGN ASSEMBLY EQUALS 25.70 SQ. FT. (2.3 SQ. M.)
7. SHALL BE PAID FOR AS TEMPORARY INFORMATION SIGNING.

ALL DIMENSIONS ARE IN INCHES (MILLIMETERS) UNLESS OTHERWISE SHOWN.

MODEL: Default
 FILE: hamlr_20220115.ctb
 PROJECT: \\project\158920\CADD\data\Design\BdESG.dgn
 USER: hamlr

USER NAME = mohammad.hamwi	DESIGNED -	REVISED - R. MIRS 09-15-97
	DRAWN -	REVISED - R. MIRS 12-11-97
PLOT SCALE = 100,0000 ' / in.	CHECKED -	REVISED - T. RAMMACHER 02-02-99
PLOT DATE = 12/15/2022	DATE -	REVISED - C. JUCIUS 01-31-07

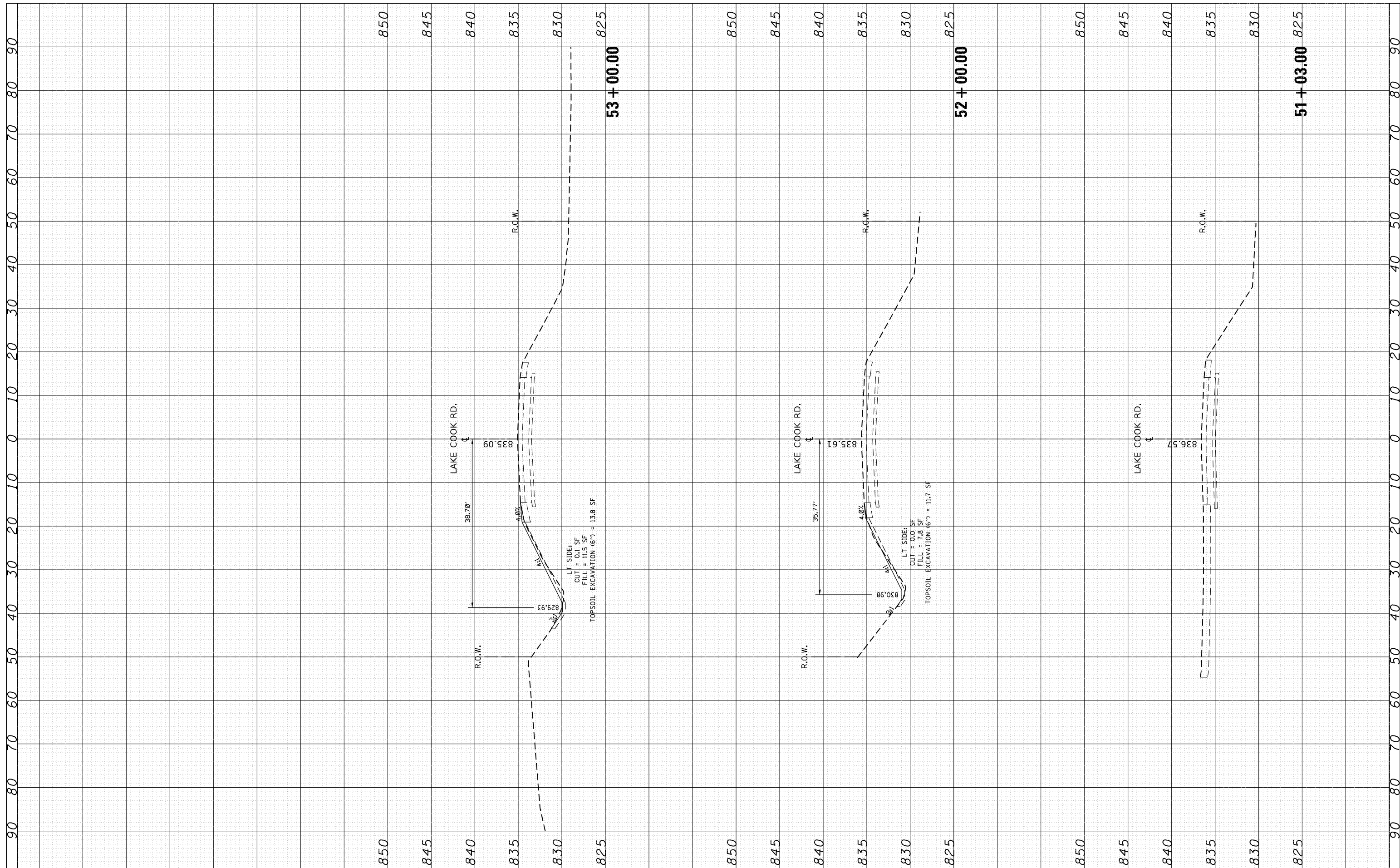
**STATE OF ILLINOIS
DEPARTMENT OF TRANSPORTATION**

ARTERIAL ROAD INFORMATION SIGN			
SCALE: NONE	SHEET 1	OF 1 SHEETS	STA. TO STA.

F.A.U RTE.	SECTION	COUNTY	TOTAL SHEETS	SHEET NO.
VAR.	2020-191-R5	COOK LAKE	29	27
TC-22			CONTRACT NO. 62M65	
ILLINOIS FED. AID PROJECT				

FINAL SURVEY NO.	SURVEYED PLOTTED TEMPLATE AREAS CHECKED	BY	DATE

ORIGINAL SURVEY NO.	SURVEYED PLOTTED TEMPLATE AREAS CHECKED	BY	DATE



FILE NAME = p:\idot\pwbentley.com\PIDOT\Documents\IDOT

USER NAME = mohammed.hamwi
 OFFICES\District 1\Projects\DI58920\CA0Data\DRAWN\04021-Lake-Cook-sht-ssht.dgn
 PLOT SCALE = 20.0000' / in.
 PLOT DATE = 12/15/2022

DESIGNED -
 CHECKED -
 DATE -

REVISED -
 REVISED -
 REVISED -
 REVISED -

**STATE OF ILLINOIS
 DEPARTMENT OF TRANSPORTATION**

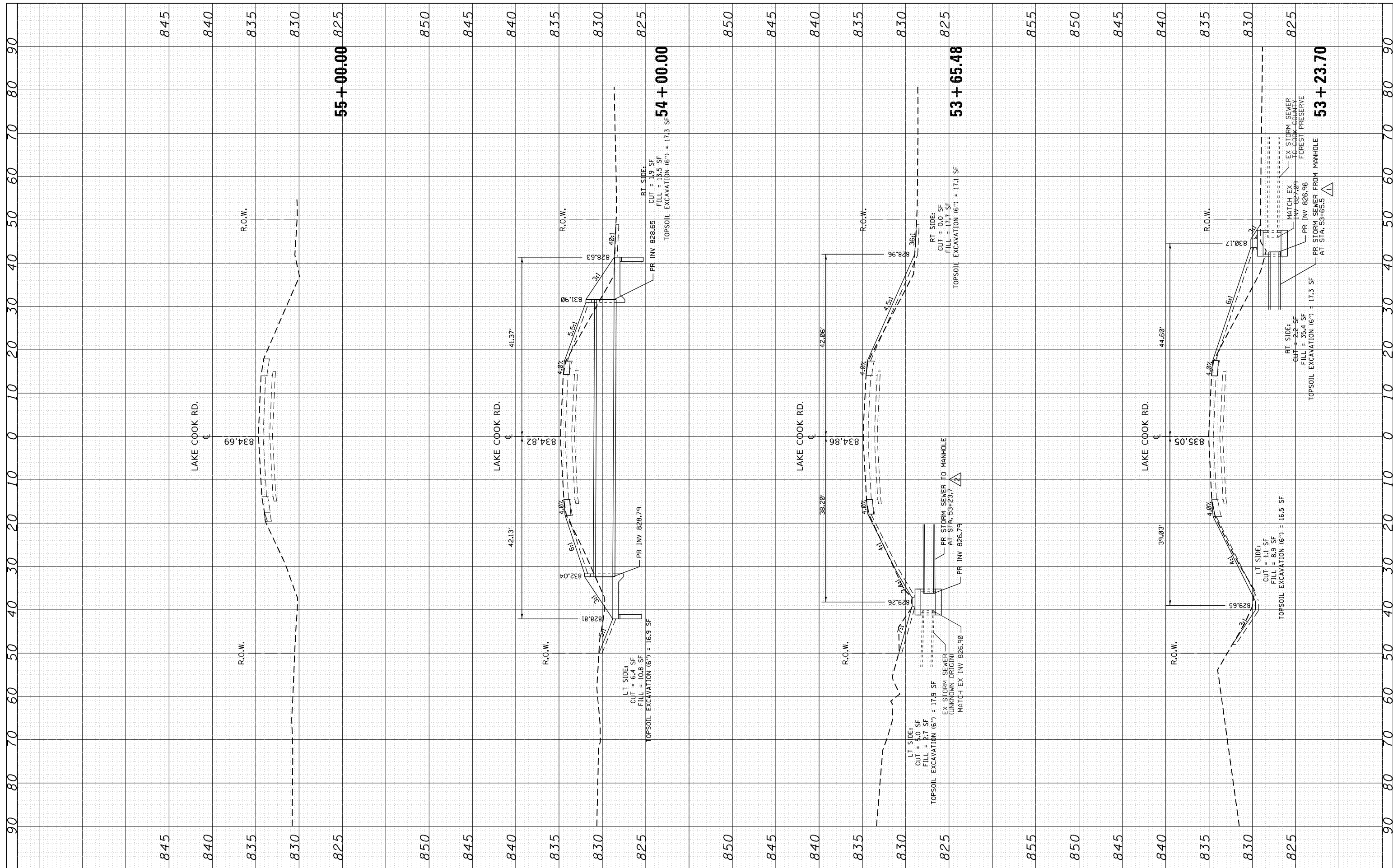
**EXISTING AND PROPOSED CROSS SECTIONS
 LAKE COOK ROAD, EAST OF WALLINGFORD LANE**

SCALE: SHEET OF SHEETS STA. 51+03.00 TO STA. 53+00.00

F.A. RTÉ.	SECTION	COUNTY	TOTAL SHEETS	SHEET NO.
VAR.	2020-191-R5	COOK & LAKE	29	28
CONTRACT NO. 62M65			ILLINOIS FED. AID PROJECT	

FINAL SURVEY	SURVEYED	BY	DATE
NOTE BOOK	PLOTTED		
AREAS CHECKED	TEMPLATE		
NO.	AREAS CHECKED		

ORIGINAL SURVEY	SURVEYED	BY	DATE
NOTE BOOK	PLOTTED		
AREAS CHECKED	TEMPLATE		
NO.	AREAS CHECKED		



FILE NAME = p:\dot-pw\Bentley.com\PIDOT\Documents\IDOT

USER NAME = mohammed.hamwi
 OFFICE: District 1\Projects\DI58920\CA0Data\DRAWN\14021-Lake-Cook-sht-xssht.dgn
 PLOT SCALE = 20.0000' / in.
 PLOT DATE = 12/15/2022

DESIGNED -
 CHECKED -
 DATE -

REVISED -
 REVISED -
 REVISED -
 REVISED -

**STATE OF ILLINOIS
 DEPARTMENT OF TRANSPORTATION**

**EXISTING AND PROPOSED CROSS SECTIONS
 LAKE COOK ROAD, EAST OF WALLINGFORD LANE**

SCALE: SHEET OF SHEETS STA. 53+23.70 TO STA. 55+00.00

F.A. RTÉ.	SECTION	COUNTY	TOTAL SHEETS	SHEET NO.
VAR.	2020-191-R5	COOK & LAKE	29	29
CONTRACT NO. 62M65			ILLINOIS FED. AID PROJECT	