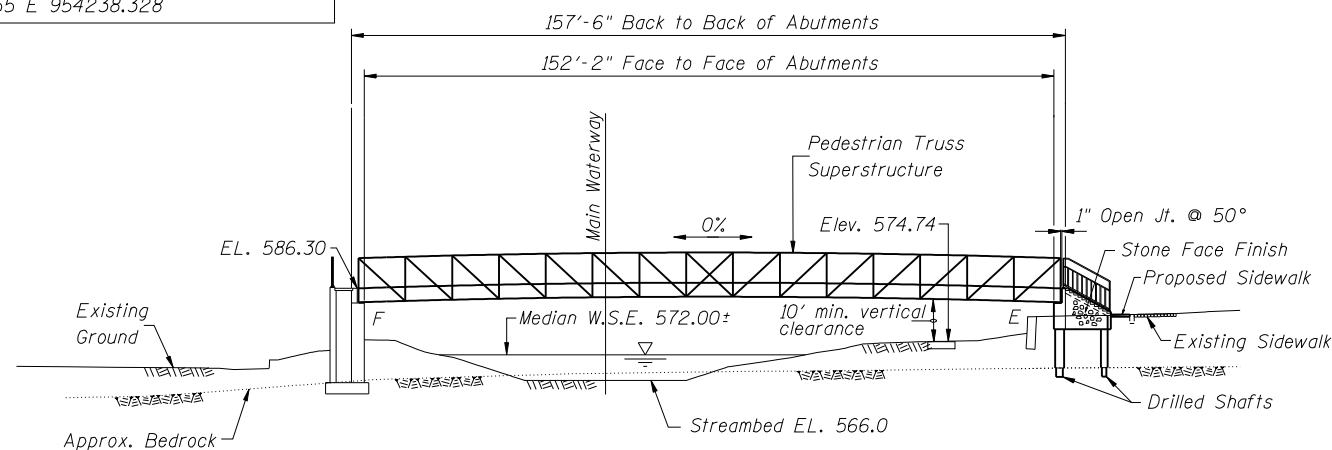


B.M. #2: Metal plug in chiseled square on north abutment. Elev. 582.00 (NGVD '29)
N 1812333.455 E 954238.328



ELEVATION

Notes:

- The bridge shall be constructed at right angles to the existing north abutment. The Engineer shall verify the bridge alignment and location of south abutment prior to construction.
- Section A-A shown on sheet 5.

FOX RIVER CANOE BYPASS
BUILT 2011 BY
IL. DEPT. OF NATURAL RESOURCES
OFFICE OF WATER RESOURCES

NAME PLATE

(See Standard 515001)
Note: Attach name plate to east wingwall at south abutment.

DESIGN SPECIFICATIONS

2002 AASHTO Load Factor Design and Guide Specifications for design of Pedestrian Bridges Published by AASHTO, August 1997

DESIGN STRESSES

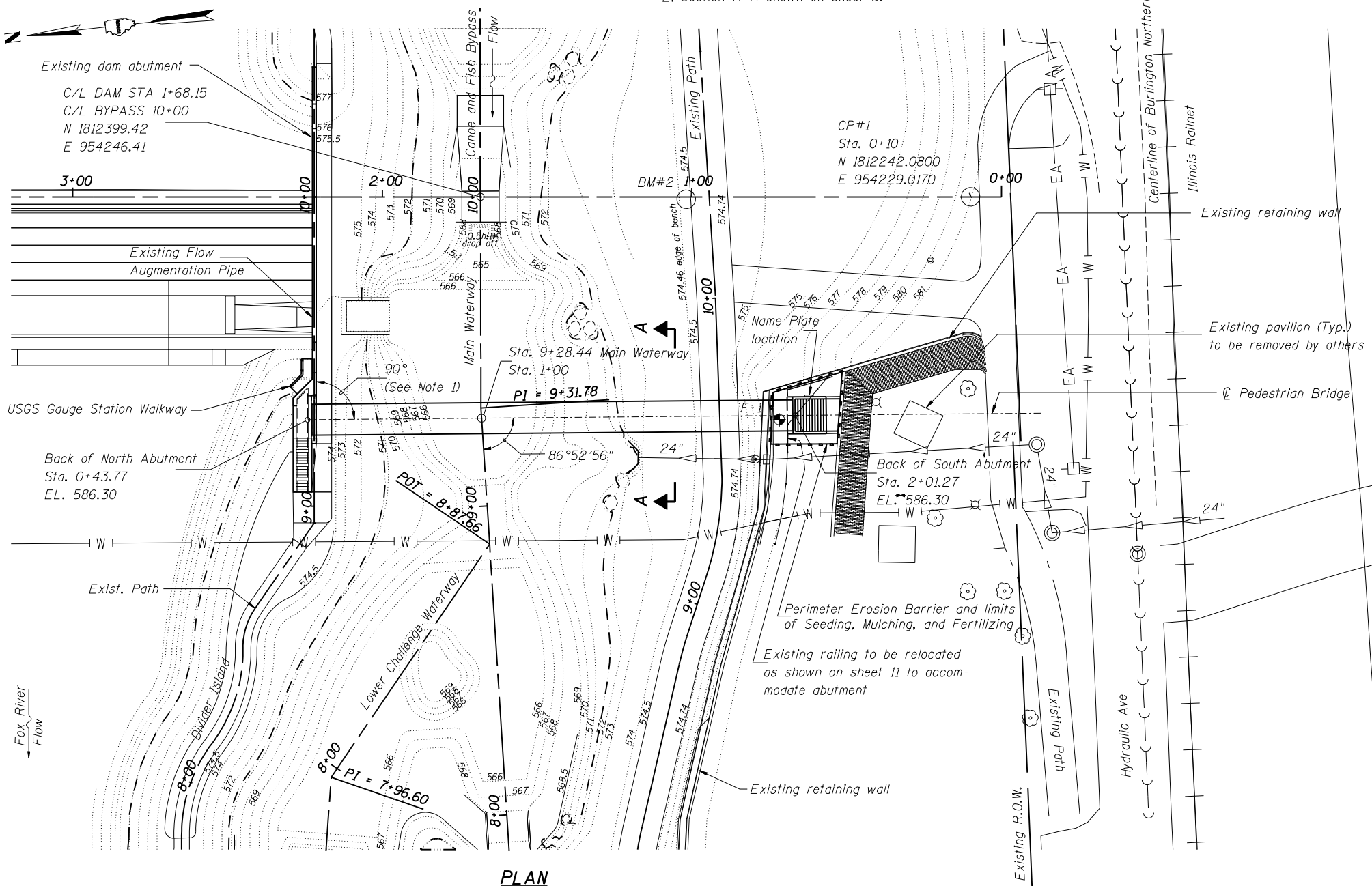
$f'_c = 3,500$ psi
 $f_y = 60,000$ psi (reinforcement)
 $f_y = 50,000$ psi (M270, Grade 50W) Superstructure
Allowable Rock Bearing Pressure, $q_{allow} = 50$ tsf

LOADING

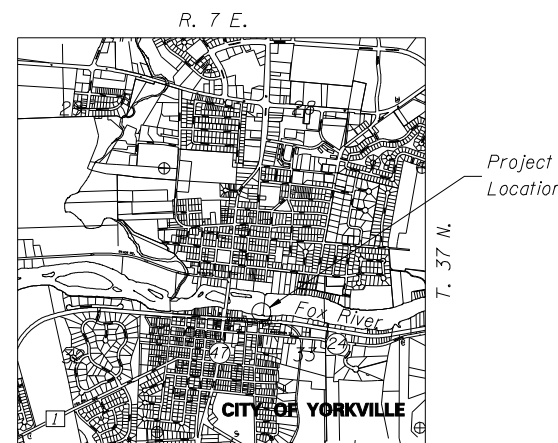
Pedestrian Live Load = 85 psf

SEISMIC DATA

SPC = A
A = 0.05g
Site Coefficient (S) = 1.0



PLAN



LOCATION SKETCH

TOTAL BILL OF MATERIAL

| Item | Unit | Total |
|--|-------|-------|
| Pedestrian Truss Superstructure | Sq Ft | 1,294 |
| Reinforcement Bars, Epoxy Coated | Pound | 4,300 |
| Concrete Structures | Cu Yd | 17 |
| Structure Excavation | Cu Yd | 30 |
| Name Plates | Each | 1 |
| Bridge Seat Sealer | Sq Ft | 21 |
| Pedestrian Railing | Foot | 40 |
| Stone Face Finish | Sq Ft | 199 |
| Drilled Shaft in Soil | Cu Yd | 3.1 |
| Drilled Shaft in Rock | Cu Yd | 1.2 |
| Permanent Casing | Foot | 34 |
| Portland Cement Concrete Sidewalk 6 Inch | Sq Ft | 48 |
| Perimeter Erosion Barrier | Foot | 85 |
| Seeding, Mulching, and Fertilizing | Acre | 0.01 |
| Gage Station Walkway | L Sum | 1 |

Designed By TMM Checked By JUF
Drawn By JUF Checked By TMM

\$FILES \$TIMES \$DATES