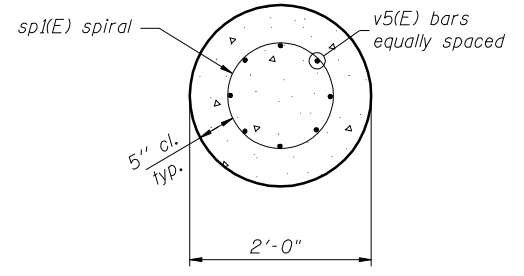
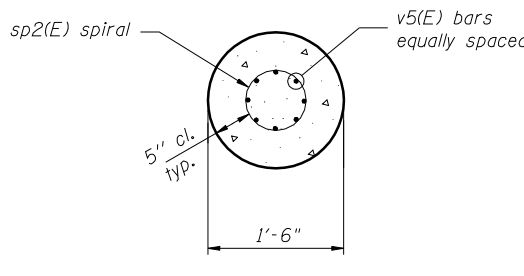


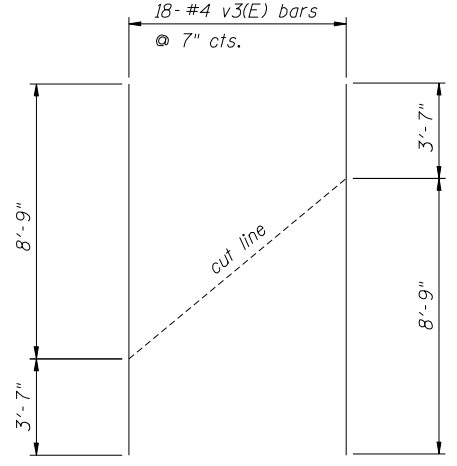
SECTION C-C



SECTION A-A

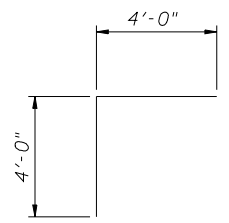


SECTION B-B

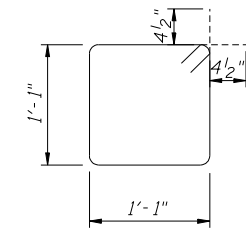


FIELD CUTTING DIAGRAM

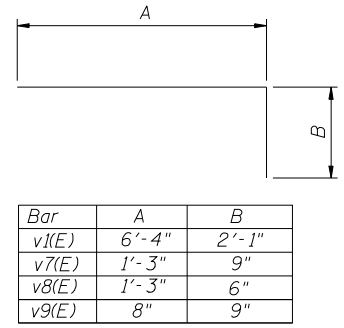
Order v3(E) bars full length. Cut as shown and use remainder in opposite face.



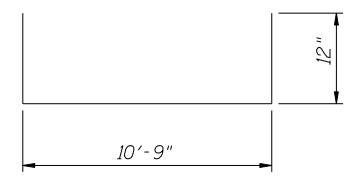
BAR h2(E)



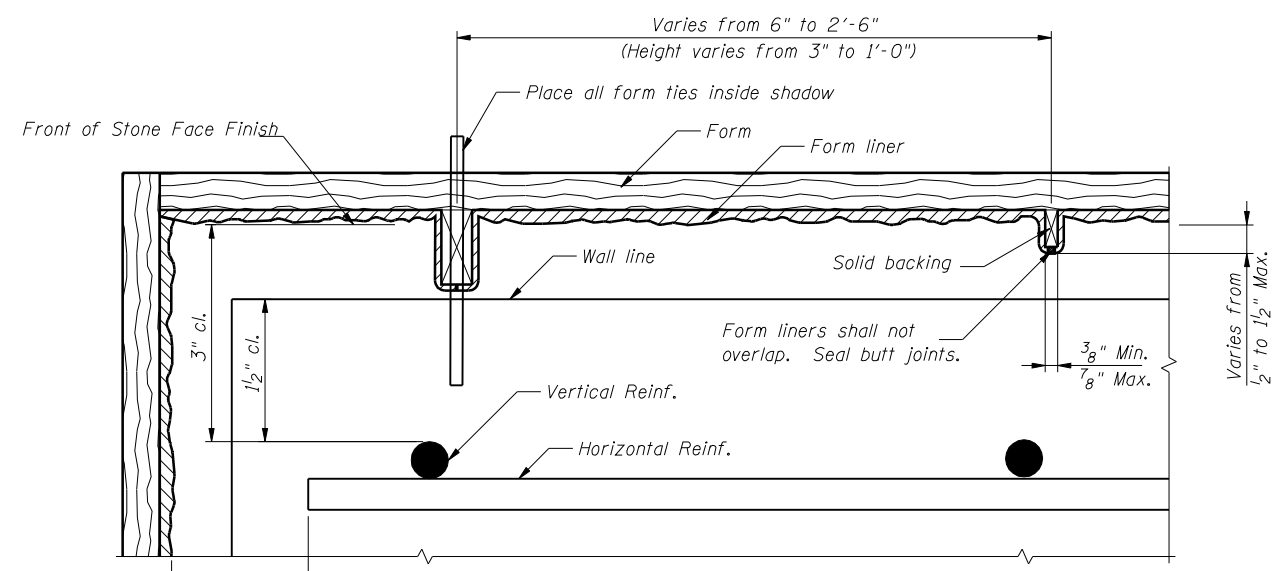
BAR s(E)



BARS v1(E) and v7(E) thru v9(E)



BAR h6(E)



TYPICAL FORMWORK DETAIL
PLAN VIEW

Notes:

1. Space reinforcement to miss anchor bolts.
2. All edges shall have a 3/4 inch chamfer unless noted otherwise.
3. Location of bearings to be as required for prefabricated truss bridge used. Prefabricated truss bridge manufacturer shall design bearings and anchor bolts to accommodate bearing seat dimensions provided with due consideration for required anchor bolt spacing and distances from anchor bolts to free edges of concrete.
4. The quantities, dimensions, and reinforcement details shown were developed using the bearing seat elevations shown and may change based upon final bearing seat elevations. Contractor shall adjust the bearing seat elevations accordingly to accommodate the prefabricated truss bridge used. Vertical lengths of affected bars shall also be adjusted accordingly.
5. Reinforcement bars designated (E) shall be epoxy coated.

BILL OF MATERIAL *

Bar	No.	Size	Length	Shape
h(E)	20	#5	11'-6"	—
h1(E)	56	#6	12'-0"	—
h2(E)	56	#6	8'-0"	└
h3(E)	12	#5	10'-3"	—
h4(E)	26	#6	11'-0"	—
h5(E)	22	#4	10'-3"	—
h6(E)	3	#5	12'-9"	└
p(E)	12	#5	12'-1"	—
s(E)	20	#4	5'-1"	□
sp1(E)	2	#4	15'-1"	〰
sp2(E)	2	#4	15'-1"	〰
v(E)	13	#5	8'-7"	—
v1(E)	13	#5	8'-5"	└
v2(E)	13	#5	6'-6"	—
v3(E)	36	#4	12'-4"	—
v4(E)	11	#4	2'-4"	—
v5(E)	32	#4	14'-10"	—
v6(E)	22	#5	1'-2"	—
v7(E)	99	#5	2'-0"	└
v8(E)	11	#5	1'-9"	└
v9(E)	11	#5	1'-5"	└
v10(E)	16	#4	6'-0"	—
v11(E)	16	#4	3'-7"	—

Concrete Structures	Cu Yd	16.8
Reinforcement Bars, Epoxy Coated	Pound	4,250
Bridge Seat Sealer	Sq Ft	21
Structure Excavation	Cu Yd	30
Stone Face Finish	Sq Ft	199
Drilled Shaft in Soil	Cu Yd	3.1
Drilled Shaft in Rock	Cu Yd	1.2
Permanent Casing	Foot	34

*See Note 4

O:\Dwt\Proj\p\Projects\Yorkville Dam Phase 3\Plans DGN\South Abutment Details.dgn
 2/14/2011 5:00:29 PM
 Designed By TMM Checked By JUF
 Drawn By JUF Checked By TMM