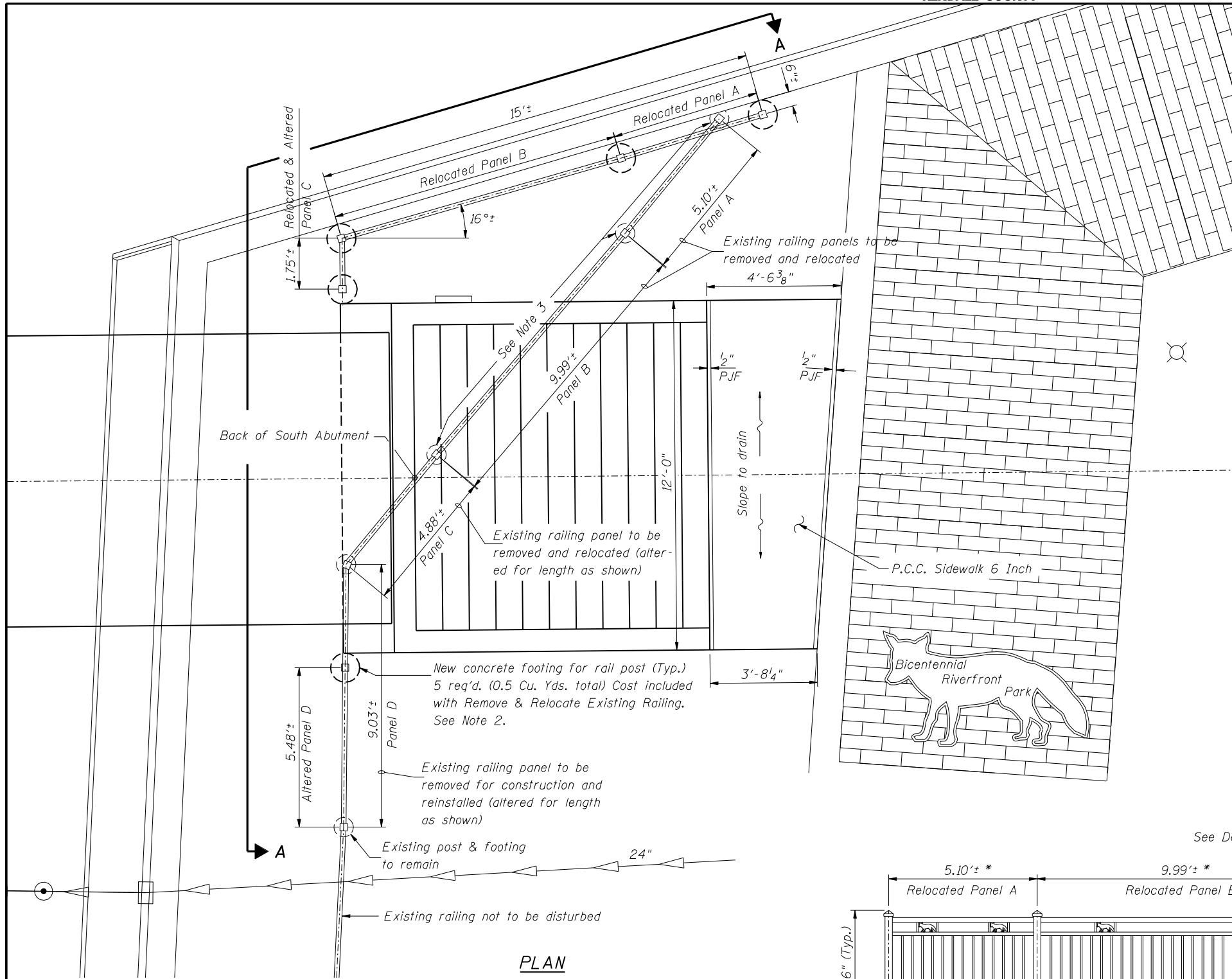


O:\Dwr\Proj\Imp\Projects\Yorkville Dam Phase 3\Plans DGN\Park Railing Relocation.dgn

5:04:55 PM

2/14/2011

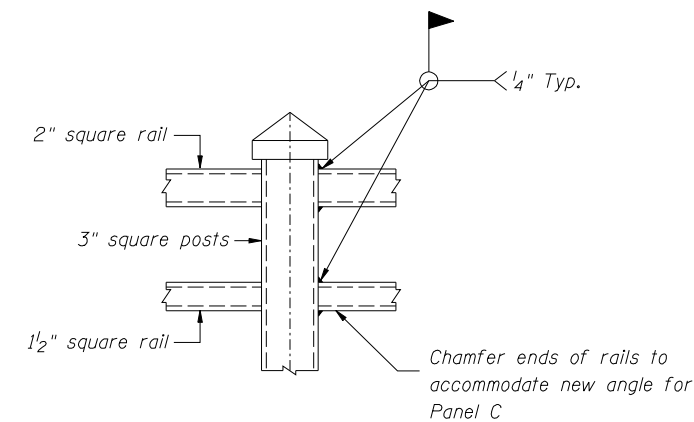
Designed By TMM Checked By JUF
Drawn By JUF Checked By TMM



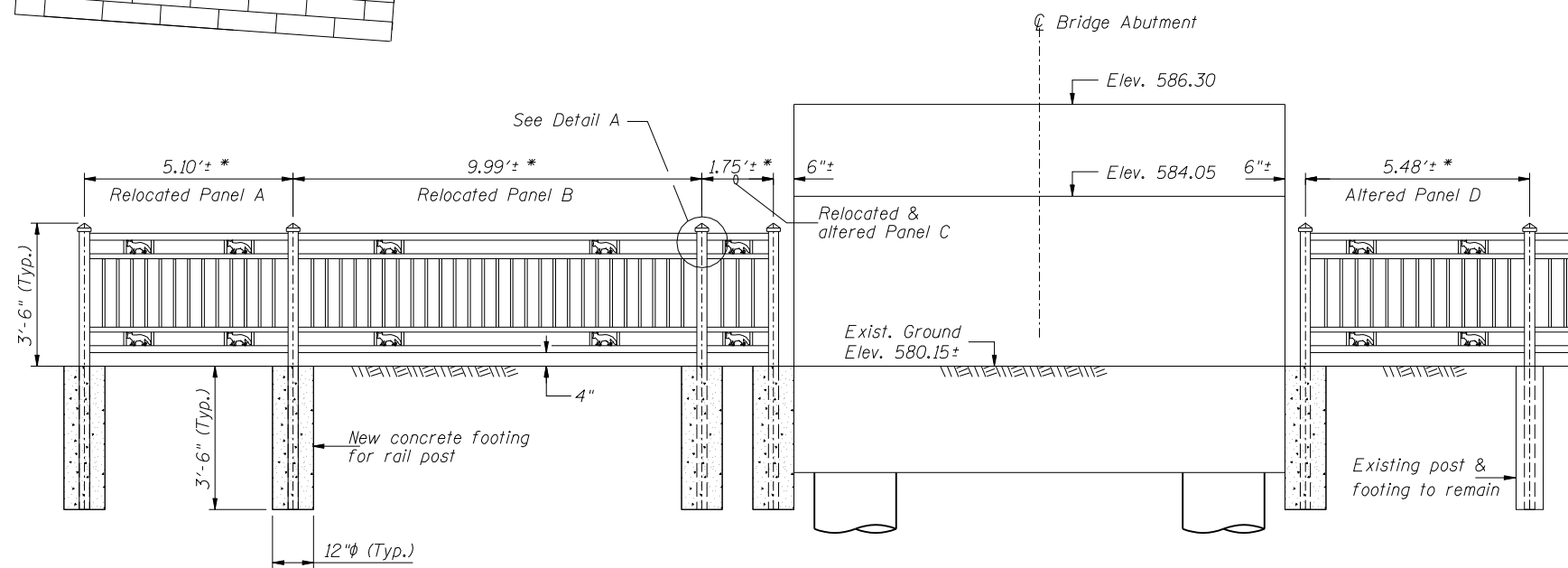
PLAN
(Fence Relocation Detail)

Notes:

1. The welded joints shall be cleaned and painted in accordance with Section 506 of the IDOT Std. Specifications. The top coat shall be No.5 Green paint manufactured by Raabe Corporation, Menomonee Falls, Wisconsin (or approved equal). The paint color is also identified as 4113400, packaged for Game Time, Inc., Fort Payne, Alabama.
2. The concrete from the existing footings shall be carefully removed from around the posts so as not to damage them. The railing panels shall then be re-erected as shown. Any items which have been damaged by the Contractor shall be replaced at Contractor's expense, and at no additional cost to the Department, with new material of the same kind, and installed in a manner satisfactory to the Engineer.
3. Remove existing 8"Ø caissons/footings to at least 1 foot below the existing ground line elevation. Portions of those caissons/footings below this elevation that interfere with the proposed construction shall also be removed.



DETAIL A



VIEW A-A

BILL OF MATERIAL

Remove and Relocate Existing Railing	Foot	23
P.C.C. Sidewalk 6 Inch	Sq.Ft	48

* Panel lengths shown may need to be altered in field to suit actual field conditions. Contractor shall verify these lengths prior to commencing work. See Special Provision.