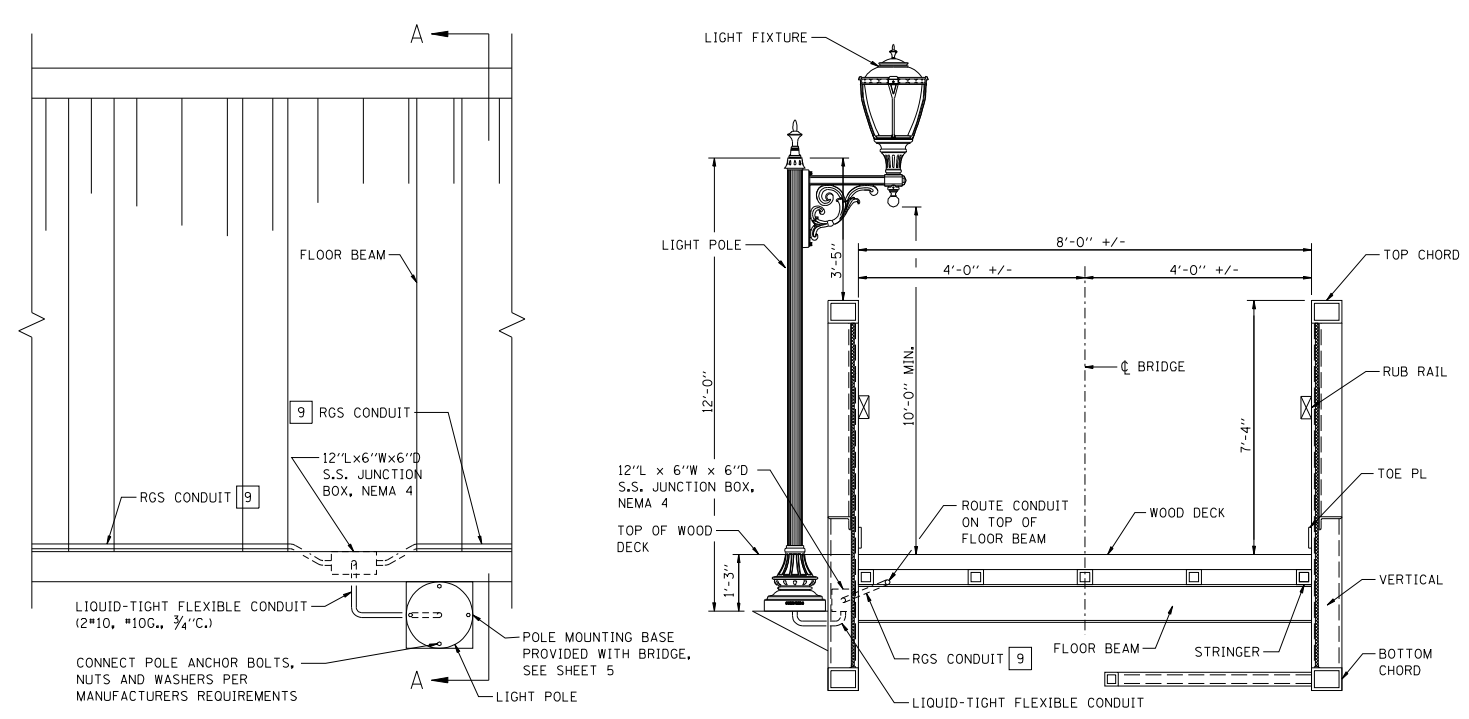
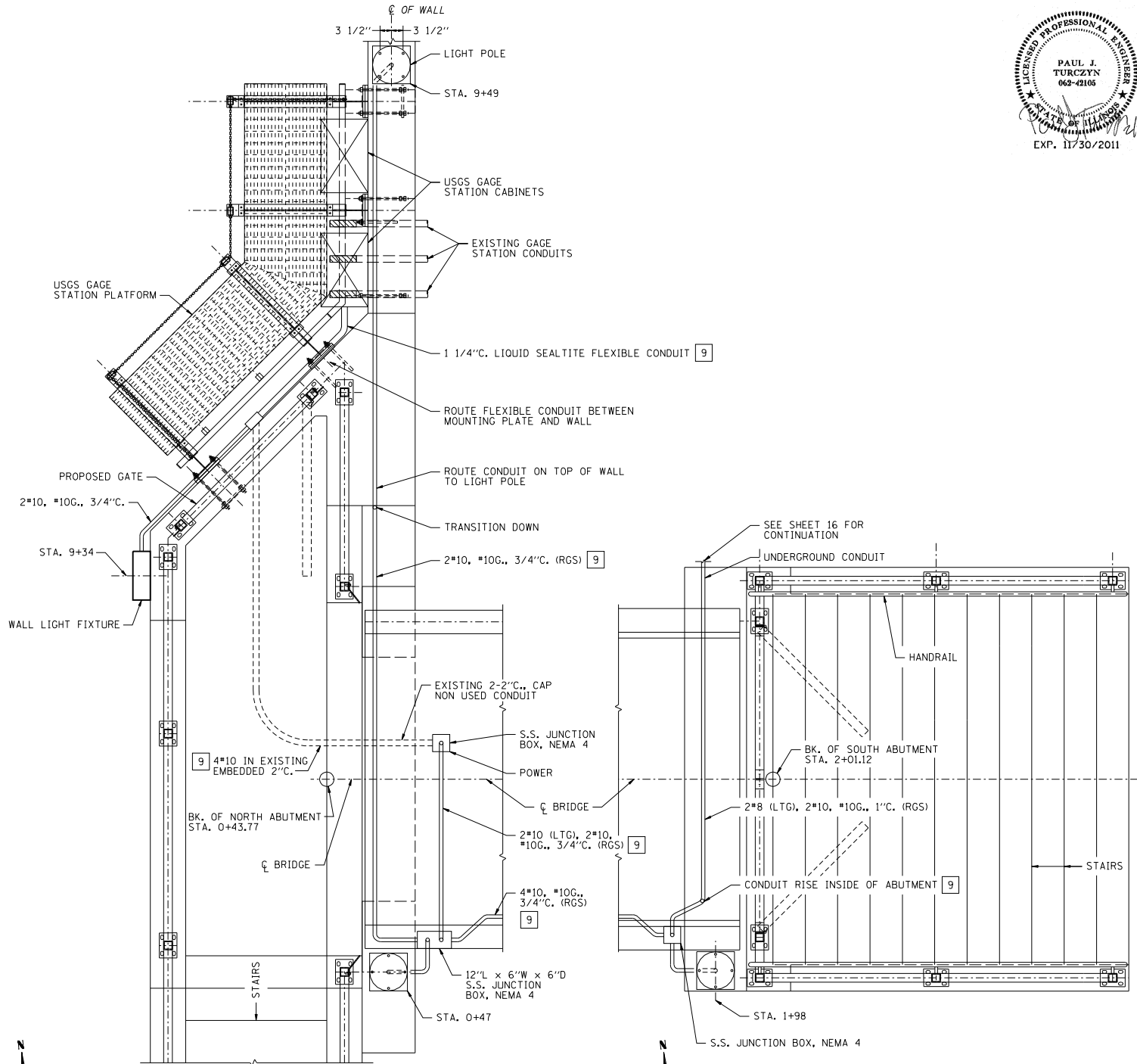


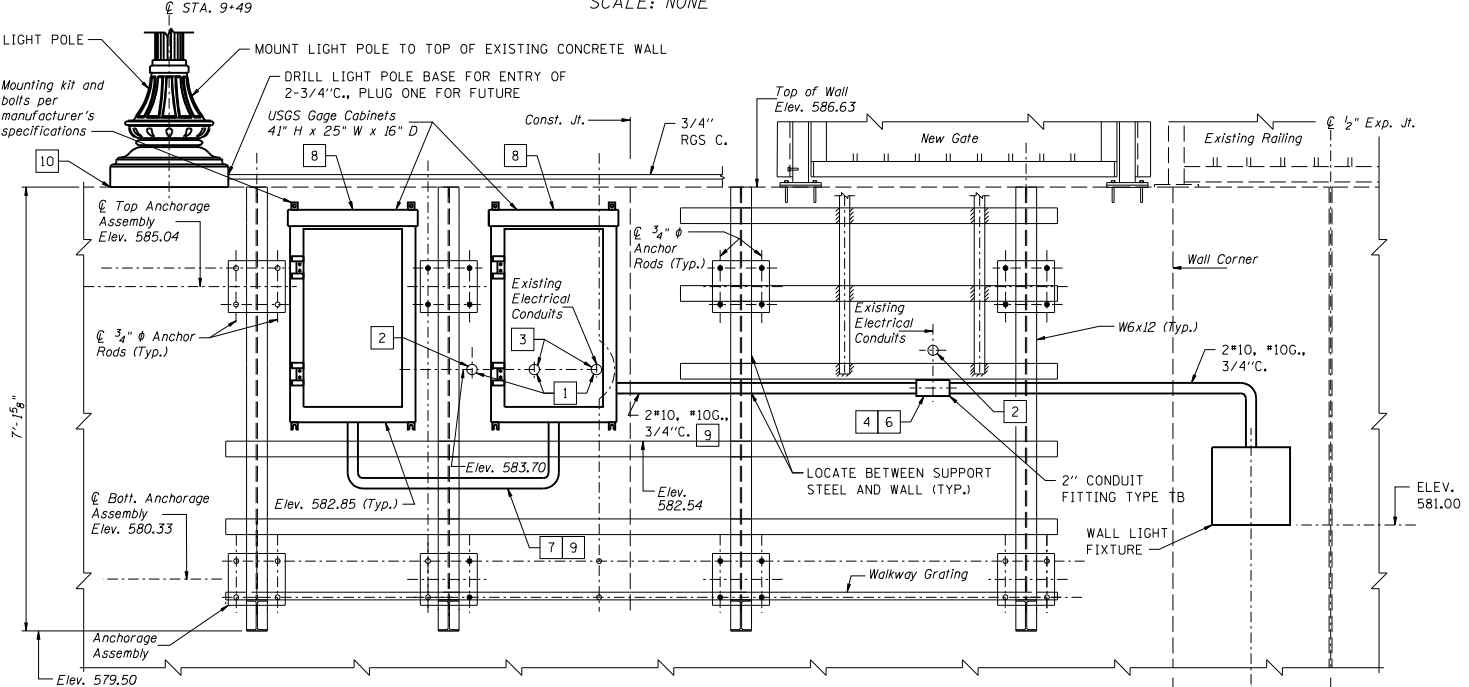
2/14/2011 5:11:27 PM
 O:\Dwr\Proj\proj\Projects\Yorkville Dam Phase 3\Plans DGN\Lighting Details.dgn
 HANSON Professional Services Inc. 2005
 Copyright Hanson Professional Services Inc. 2005
 Designed By PJT Checked By AWC
 Drawn By PJT Checked By PJT



PLAN **SECTION A-A**
1 **PEDESTRIAN BRIDGE**
17 **LIGHT FIXTURE MOUNTING DETAIL**
SCALE: NONE



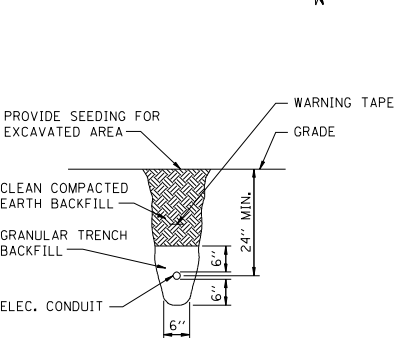
3 **STAIR AND LANDING PLAN - NORTH ABUTMENT**
17 SCALE: NONE
4 **STAIR PLAN - SOUTH ABUTMENT**
17 SCALE: NONE



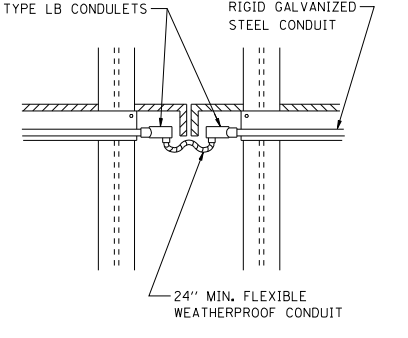
2 **USGS GAGE STATION ELEVATION**
17 SCALE: NONE

- ELECTRICAL KEYED NOTES**
- 1 EXISTING GAGE STATION CONDUITS (2" RGS).
 - 2 CUTOFF CONDUIT AND CAP (3" FROM FACE OF WALL).
 - 3 CUTOFF CONDUIT, PROVIDE TERMINATION BUSHING. PROVIDE CUTOFF IN BACK OF CABINET TO ACCEPT CONDUIT. PROVIDE WEATHERTIGHT SILICONE SEALANT AROUND CONDUIT.
 - 4 EXISTING CONDUIT (2" RGS) FOR POWER CIRCUIT TO GAGE STATION CABINET. PROVIDE 2"-1 1/4"C. REDUCER FITTING AND COMPRESSION TRANSITION FITTING, AND CONNECT TO GAGE STATION CABINET WITH 1 1/4" LIQUID TIGHT FLEXIBLE CONDUIT.
 - 5 CUTOFF CONDUIT AS CLOSE AS POSSIBLE TO FACE OF WALL.
 - 6 EXISTING CONDUIT (2" RGS) FOR COMMUNICATIONS CIRCUIT TO GAGE STATION CABINET. PROVIDE 2"-1 1/4"C. REDUCER FITTING AND COMPRESSION TRANSITION FITTING, AND CONNECT TO GAGE STATION CABINET WITH 1 1/4" LIQUID TIGHT FLEXIBLE CONDUIT.

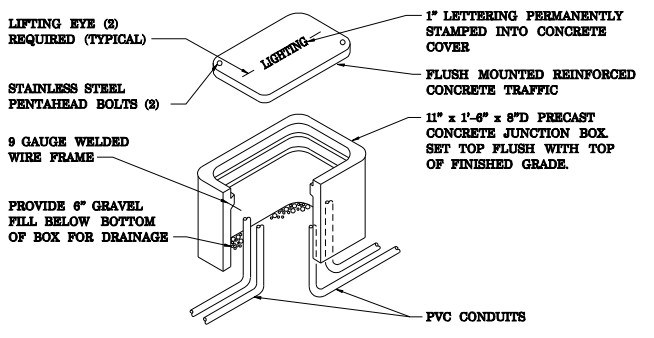
- ELECTRICAL KEYED NOTES (CONTINUED)**
- 7 PROVIDE 1 1/4" LIQUID TIGHT FLEXIBLE CONDUIT BETWEEN CABINETS.
 - 8 GRIND OFF EXISTING WALL SURFACE TO PROVIDE SMOOTH MOUNTING FOR CABINETS.
 - 9 PROVIDE PULL WIRE IN ALL CONDUITS FOR FUTURE USE.
 - 10 PROVIDE FOUR (4) ANCHOR BOLTS DRILLED INTO TOP OF CONCRETE WALL IN A 7"x7" SQUARE PATTERN (10" DIA. BOLT CIRCLE). ANCHOR BOLTS SHALL BE HILTI HIT-HY 150MAX+HAS, 1/2" DIA. GALVANIZED WITH 6" EMBEDMENT. LENGTH OF ANCHOR BOLT ABOVE TOP OF CONCRETE TO MATCH LIGHT POLE MANUFACTURER REQUIREMENTS FOR ANCHOR BOLTS. BOLT PATTERN SHALL BE PARALLEL TO FACE OF WALL. VERIFY LOCATION OF EXISTING REINFORCEMENT IN WALL WITH ENGINEER.



5 **TRENCH DETAIL**
17 SCALE: NONE



6 **EXPANSION JOINT DETAIL**
17 SCALE: NONE



7 **HANDHOLE DETAIL**
17 SCALE: NONE