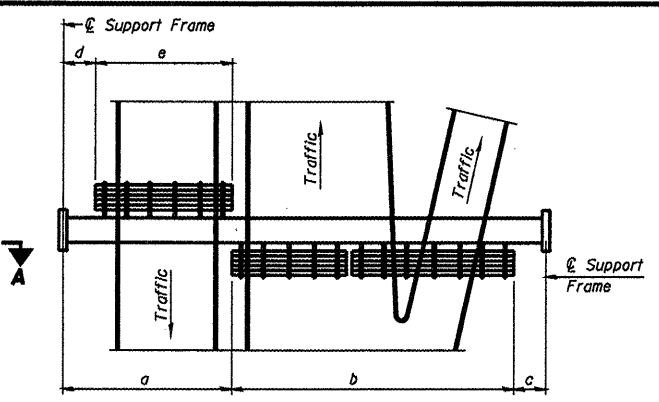


TYPICAL FRONT ELEVATION
With lights and handrail omitted for clarity.
For Section B-B, see Base Sheet OS-A-10.

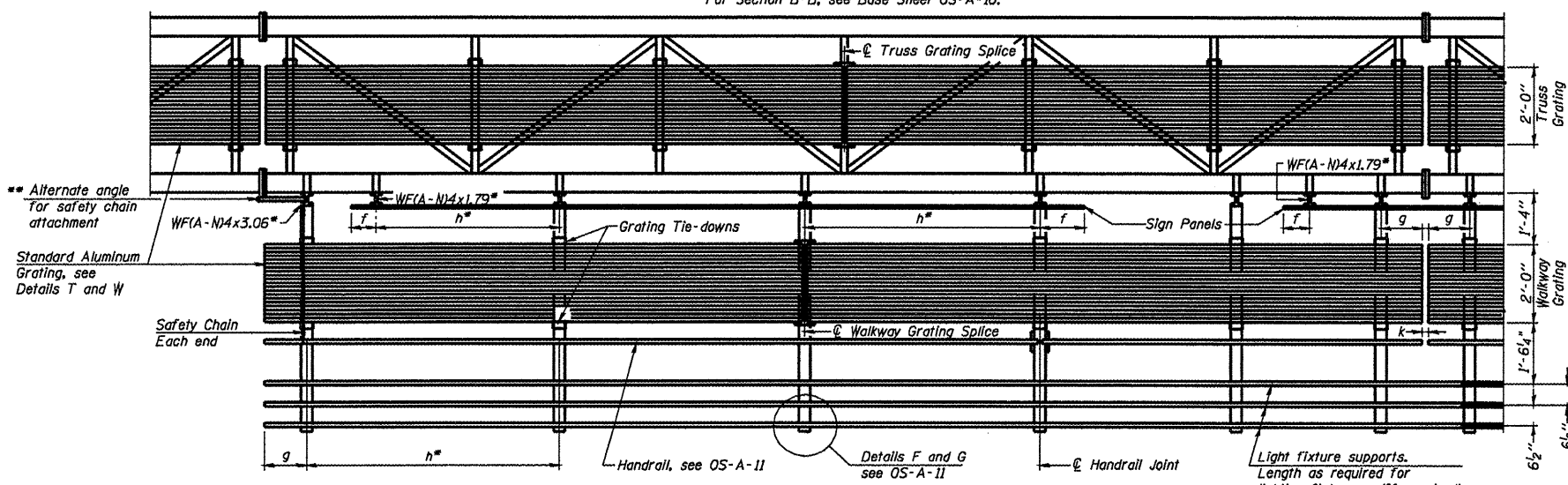


PLAN WALKWAY AND HANDRAIL SKETCH
(Road plan beneath truss varies)

BRACKET TABLE

WFA-N4x1.79 or WFA-N4x3.06 ASTM B308, Alloy 6061-T6		
Sign Width	Less Than or Equal To	Number Brackets Required
Greater Than	8'-0"	2
8'-0"	14'-0"	3
14'-0"	20'-0"	4
20'-0"	26'-0"	5
26'-0"	32'-0"	6

- Notes:
- Space walkway brackets WFA-N4x3.06 and sign brackets WFA-N4x1.79 for efficiency and within limits shown:
 - f = 12" maximum, 4" minimum (End of sign to center of nearest bracket)
 - g = 12" maximum, 4" minimum (End of walkway grating to center of nearest support bracket)
 - h = 6'-0" maximum (center to center of sign and/or walkway support brackets, WFA-N4x1.79 or WFA-N4x3.06)
 - k = 2" maximum gap between adjacent walkway grating sections and handrail ends
- ** If walkway bracket at safety chain location is behind sign, add angle for safety chain attachment, see Alternate Safety Chain Attachment on Base Sheet OS-A-11.
- For Details T and W, Section B-B and Grating Splice Details see Base Sheet OS-A-10.
For Handrail Details see Base Sheet OS-A-11.



SECTION A-A
Handrail and walkway shall span a minimum of three brackets between splices and/or gap joints. Place all sign and walkway brackets as close to panel points as practical. Handrail joints, grating, and light support splices placed as needed.

Structure Number	Station	a	b	c	d	e	Walkway Grating and Handrail Lengths
450480034L008.0	640+20	N/A	N/A	N/A	N/A	N/A	95'-6"

Truss grating to facilitate inspection shall run full length (center to center of support frames) ±12" on overhead trusses. Cost of truss grating is included in "Overhead Sign Structure".

Walkway and Truss Grating width dimensions are nominal and may vary ±1/2" based on available standard widths.

OS-A-9

7-1-10

FILE NAME =	USER NAME =	DESIGNED -	REVISIONS -
		CHECKED -	REVISIONS -
PLOT SCALE =		DRAWN -	REVISIONS -
PLOT DATE =		CHECKED -	REVISIONS -

STATE OF ILLINOIS
DEPARTMENT OF TRANSPORTATION

OVERHEAD SIGN STRUCTURES
ALUMINUM WALKWAY DETAILS

SHEET NO. 8 OF 30 SHEETS

SECTION	COUNTY	TOTAL SHEETS	SHEET NO.
Various D-4 OVD SIGN STR REPL 11-29	DIKE-PEORIA	30	8
CONTRACT NO. 46152		ILLINOIS FED. AID PROJECT	