

STATE OF ILLINOIS
DEPARTMENT OF TRANSPORTATION
DIVISION OF HIGHWAYS

**PROPOSED
HIGHWAY PLANS**

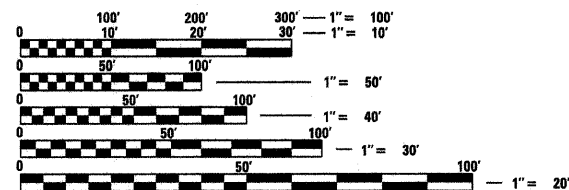
IDOT
PARK ROADS IMPROVEMENTS
ARGYLE LAKE STATE PARK
MCDONOUGH COUNTY
C-30-005-11

F.A. RTE.	SECTION	COUNTY	TOTAL SHEETS	SHEET NO.
	ARGYLE LAKE STATE PARK	MCDONOUGH	162	1
FED. ROAD DIST. NO.	ILLINOIS	CONTRACT NO.	46158	

FOR INDEX OF SHEETS, SEE SHEET NO. 2

LEGEND:

- PROPOSED STORM SEWER
- EXISTING STORM SEWER
- - - EXISTING DITCH
- PROPOSED INLET
- EXISTING SIGN
- ⊗ EXISTING LIGHT POLE
- ⊙ EXISTING WATER VALVE
- ⊙ EXISTING DECIDUOUS TREE
- ⊙ EXISTING POWER POLE
- ⊙ EXISTING FIRE HYDRANT
- ⊙ EXISTING CATCH BASIN
- EXISTING INLET
- ⊙ EXISTING MANHOLE
- △ EXISTING FLARED END SECTION
- EXISTING BOLLARD
- ⊞ EXISTING JUNCTION BOX



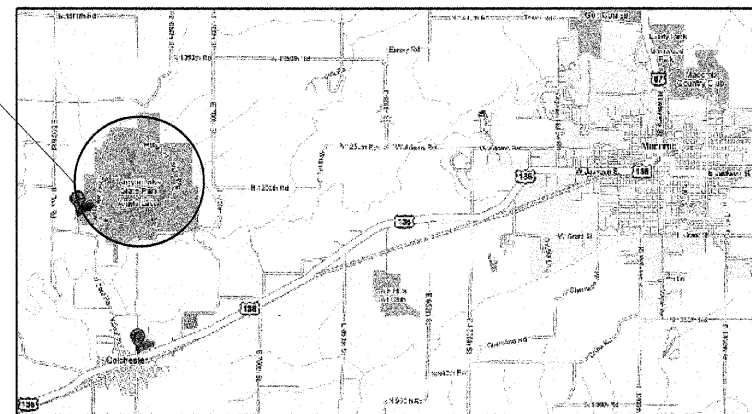
FULL SIZE PLANS HAVE BEEN PREPARED USING STANDARD ENGINEERING SCALES. REDUCED SIZED PLANS WILL NOT CONFORM TO STANDARD SCALES. IN MAKING MEASUREMENTS ON REDUCED PLANS, THE ABOVE SCALES MAY BE USED.

J.U.L.I.E.
JOINT UTILITY LOCATION INFORMATION FOR EXCAVATION
1-800-892-0123
OR 811

PROJECT ENGINEER – ROBERT H. DALTON
PROJECT MANAGER – ROBERT H. DALTON

CONTRACT NO. 46158

PROPOSED IMPROVEMENT



ROBERT H. DALTON
REGISTERED PROFESSIONAL ENGINEER OF ILLINOIS
12/17/10

STATE OF ILLINOIS
DEPARTMENT OF TRANSPORTATION
DIVISION OF HIGHWAYS

SUBMITTED December 21, 2010
William R. Frey, Jr.
DEPUTY DIRECTOR OF HIGHWAYS, REGION ENGINEER

February 4, 2011
Scott E. Stitt, P.E.
acting ENGINEER OF DESIGN AND ENVIRONMENT

February 4, 2011
Christine M. Reed
DIRECTOR OF HIGHWAYS, CHIEF ENGINEER

PRINTED BY THE AUTHORITY
OF THE STATE OF ILLINOIS