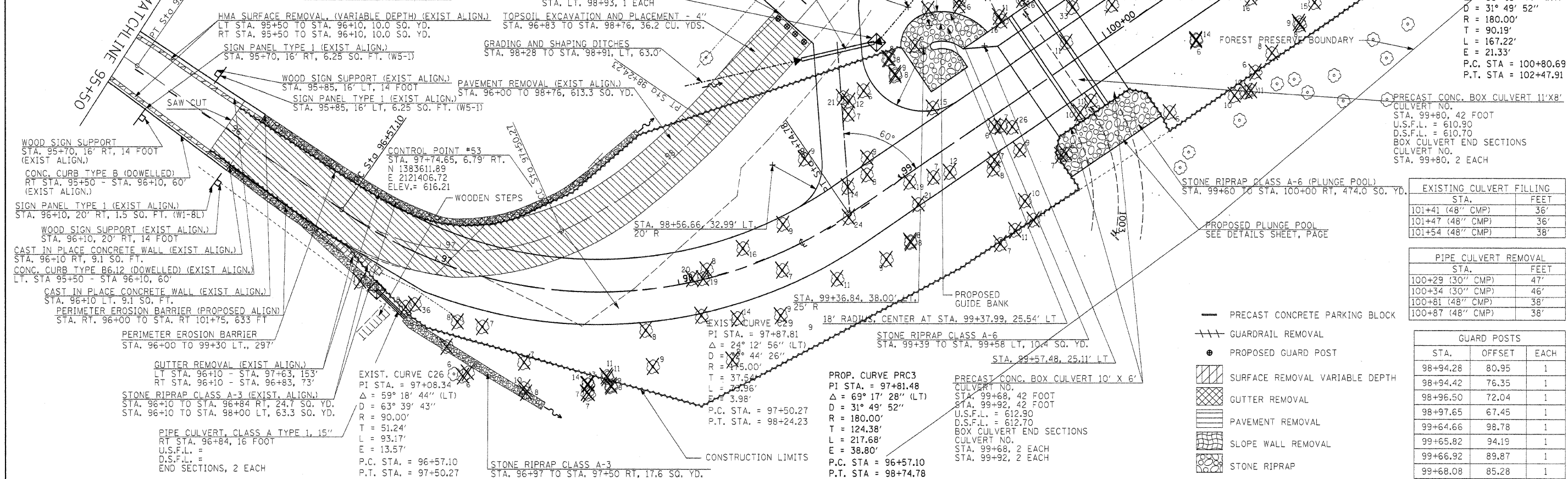


TREE REMOVAL (EXIST. ALIGN.)			TREE REMOVAL (EXIST. ALIGN.)			TREE REMOVAL (EXIST. ALIGN.)			TREE REMOVAL (EXIST. ALIGN.)		
STA.	OFFSET	SIZE	STA.	OFFSET	SIZE	STA.	OFFSET	SIZE	STA.	OFFSET	SIZE
96+75.15RT	22'	6"	98+55.83RT	85'	21"	99+37.57RT	45'	6"	101+69.34RT	102'	9"
96+91.14RT	25'	8"	98+56.03RT	57'	9"	99+38.88RT	51'	18"	101+70.28RT	80'	8"
96+93.62RT	24'	36"	98+60.15RT	77'	19"	99+43.82RT	87'	11"	101+71.24LT	17'	14"
97+05.68RT	39'	7"	98+64.14RT	40'	7"	99+45.22RT	62'	16"	101+71.50RT	92'	15"
97+08.30RT	28'	8"	98+65.70RT	120'	7"	99+49.88RT	59'	7"	101+71.58RT	40'	12"
97+10.35RT	50'	6"	98+67.75RT	34'	21"	99+50.79RT	136'	6"	101+76.06LT	15'	17"
97+11.63RT	49'	6"	98+67.87RT	82'	7"	99+53.56RT	34'	14"	101+76.85RT	59'	12"
97+15.87RT	30'	7"	98+68.24RT	37'	12"	99+55.93RT	79'	33"	101+77.24RT	44'	6"
97+25.43RT	57'	10"	98+73.77RT	121'	11"	99+56.46RT	59'	12"	101+82.37RT	66'	10"
97+25.68RT	59'	8"	98+73.80RT	86'	12"	99+56.77RT	61'	66"	101+84.40LT	15'	15"
97+26.46RT	47'	7"	98+75.25RT	38'	6"	99+58.21RT	50'	8"	101+90.06RT	79'	18"
97+39.79RT	65'	7"	98+81.72RT	124'	11"	99+67.34RT	91'	7"	101+95.42RT	69'	10"
97+40.52RT	61'	14"	98+85.14RT	116'	10"	99+72.07RT	30'	15"	101+95.87RT	13'	9"
97+45.38RT	61'	11"	98+86.26RT	98'	8"	99+72.81RT	152'	10"	101+96.49LT	20'	14"
97+45.40RT	66'	9"	98+88.21RT	44'	9"	99+74.19RT	62'	11"	102+00.78RT	48'	21"
97+57.49RT	65'	9"	98+88.62RT	64'	15"	99+74.95RT	28'	11"	102+03.61LT	16'	7"
97+60.53RT	51'	8"	98+89.41RT	96'	7"	99+77.16RT	154'	10"	102+04.69RT	66'	6"
97+76.72RT	57'	9"	98+91.32RT	37'	8"	99+78.04RT	34'	6"	102+09.30RT	24'	20"
97+77.15RT	79'	9"	98+99.10RT	101'	9"	99+78.91RT	155'	11"	102+16.98RT	25'	14"
97+80.74RT	43'	20"	98+99.52RT	87'	6"	99+79.36RT	72'	7"	102+18.56RT	15'	11"
97+83.45RT	45'	19"	99+01.31RT	89'	7"	99+85.65RT	152'	6"	102+19.00RT	60'	10"
97+84.77RT	66'	14"	99+02.72RT	42'	8"	99+90.64RT	62'	12"	102+19.86RT	20'	15"
97+85.89RT	43'	8"	99+04.04RT	93'	26"	99+93.65RT	31'	10"	102+28.50RT	29'	7"
97+94.44RT	76'	9"	99+08.48RT	115'	7"	99+95.46RT	152'	8"			
98+01.56RT	46'	16"	99+10.21RT	116'	6"	99+96.05RT	70'	6"			
98+06.20RT	63'	11"	99+16.96RT	36'	6"	100+00.95RT	42'	9"			
98+15.75RT	81'	11"	99+25.93RT	45'	6"	100+02.12RT	131'	16"			
98+15.96RT	50'	9"	99+26.62RT	110'	10"	100+27.26RT	74'	9"			
98+30.72RT	90'	9"	99+28.05RT	43'	7"	100+30.38RT	67'	9"			
98+33.34RT	68'	24"	99+31.19RT	37'	12"	100+70.82LT	14'	16"			
98+38.96RT	39'	9"	99+32.97RT	110'	11"	100+81.46LT	14'	13"			
98+42.08RT	59'	14"	99+33.08RT	62'	16"	101+10.36LT	13'	26"			
98+42.53RT	93'	8"	99+33.69RT	60'	11"	101+17.44RT	45'	8"			
98+50.89RT	62'	8"			101+23.30RT	59'	7"				
					101+68.08RT	44'	15"				



FILE NAME =	USER NAME = #USER#	DESIGNED - R.H.D.	REVISED -	STATE OF ILLINOIS DEPARTMENT OF TRANSPORTATION	ARGYLE LAKE STATE PARK	F.A. RTE.	SECTION	COUNTY	TOTAL SHEETS	SHEET NO.
#FILE#		DRAWN - J.T.T.	REVISED -			ARGYLE LAKE STATE PARK	MCDONOUGH	162	35	
PLLOT SCALE = #SCALE#		CHECKED - T.T.P.	REVISED -			CONTRACT NO. 46158				
PLLOT DATE = #DATE#		DATE - 12/09/10	REVISED -			FED. ROAD DIST. NO. ILLINOIS FED. AID PROJECT				

EXISTING CULVERT FILLING	
STA.	FEET
101+41 (48" CMP)	36'
101+47 (48" CMP)	36'
101+54 (48" CMP)	38'

PIPE CULVERT REMOVAL	
STA.	FEET
100+29 (30" CMP)	47'
100+34 (30" CMP)	46'
100+81 (48" CMP)	38'
100+87 (48" CMP)	38'

GUARD POSTS		
STA.	OFFSET	EACH
98+94.28	80.95	1
98+94.42	76.35	1
98+96.50	72.04	1
98+97.65	67.45	1
99+64.66	98.78	1
99+65.82	94.19	1
99+66.92	89.87	1
99+68.08	85.28	1