
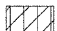

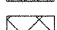

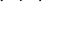
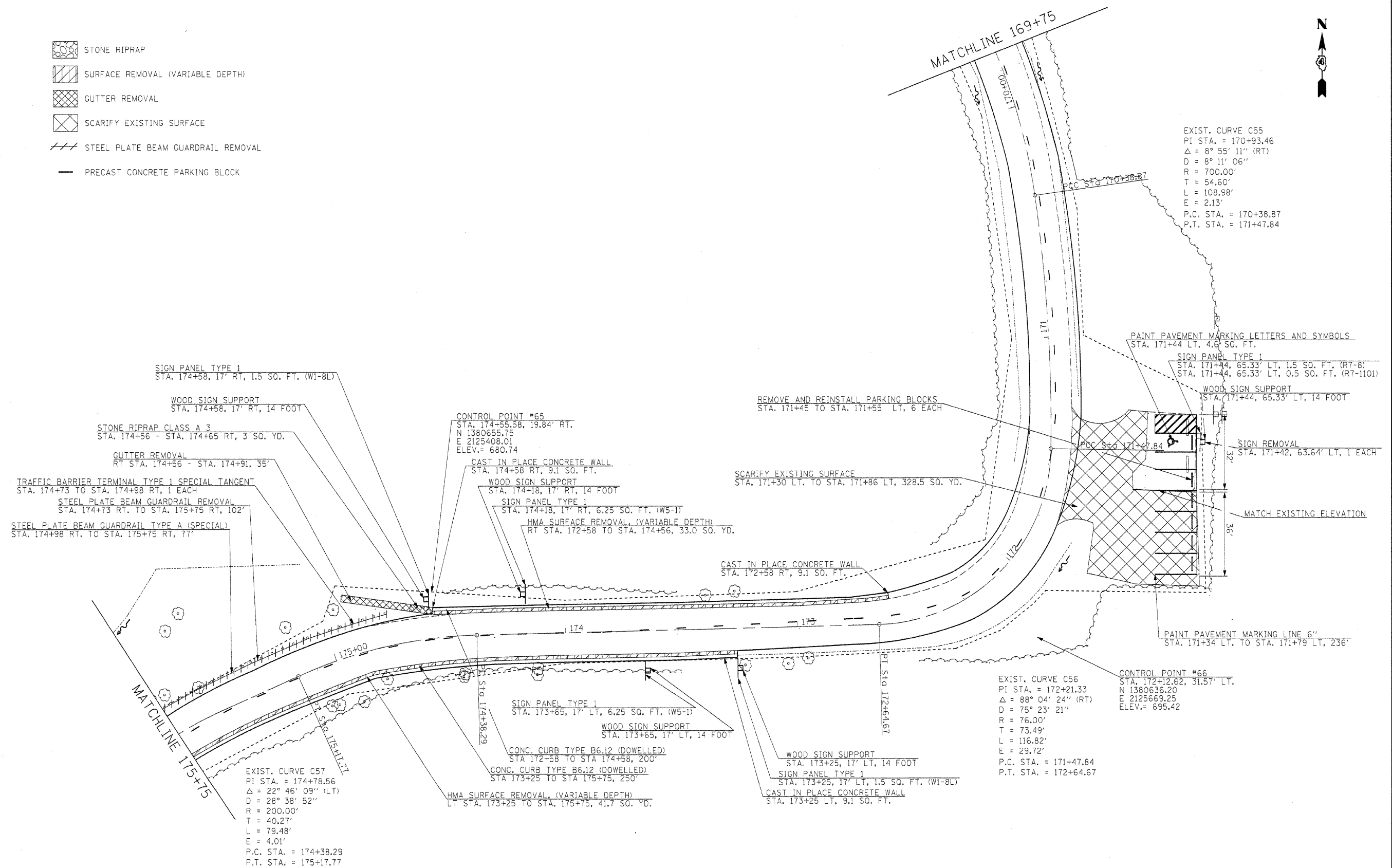


-  STONE RIPRAP
-  SURFACE REMOVAL (VARIABLE DEPTH)
-  GUTTER REMOVAL
-  SCARIFY EXISTING SURFACE
-  STEEL PLATE BEAM GUARDRAIL REMOVAL
-  PRECAST CONCRETE PARKING BLOCK



EXIST. CURVE C55
 PI STA. = 170+93.46
 $\Delta = 8^\circ 55' 11''$ (RT)
 $D = 8^\circ 11' 06''$
 $R = 700.00'$
 $T = 54.60'$
 $L = 108.98'$
 $E = 2.13'$
 P.C. STA. = 170+38.87
 P.T. STA. = 171+47.84

PAINT PAVEMENT MARKING LETTERS AND SYMBOLS
 STA. 171+44 LT, 4.6' SQ. FT.
 SIGN PANEL TYPE 1
 STA. 171+44, 65.33' LT, 1.5 SQ. FT. (R7-8)
 STA. 171+44, 65.33' LT, 0.5 SQ. FT. (R7-1101)

WOOD SIGN SUPPORT
 STA. 171+44, 65.33' LT, 14 FOOT

SIGN REMOVAL
 STA. 171+42, 63.64' LT, 1 EACH

MATCH EXISTING ELEVATION

PAINT PAVEMENT MARKING LINE 6"
 STA. 171+34 LT. TO STA. 171+79 LT, 236'

EXIST. CURVE C56
 PI STA. = 172+21.33
 $\Delta = 88^\circ 04' 24''$ (RT)
 $D = 75^\circ 23' 21''$
 $R = 76.00'$
 $T = 73.49'$
 $L = 116.82'$
 $E = 29.72'$
 P.C. STA. = 171+47.84
 P.T. STA. = 172+64.67

CONTROL POINT #66
 STA. 172+12.62, 31.57' LT.
 N 1380636.20
 E 2125669.25
 ELEV. = 695.42

EXIST. CURVE C57
 PI STA. = 174+78.56
 $\Delta = 22^\circ 46' 09''$ (LT)
 $D = 28^\circ 38' 52''$
 $R = 200.00'$
 $T = 40.27'$
 $L = 79.48'$
 $E = 4.01'$
 P.C. STA. = 174+38.29
 P.T. STA. = 175+17.77

FILE NAME =	USER NAME = #USER#	DESIGNED - R.H.D.	REVISED -	STATE OF ILLINOIS DEPARTMENT OF TRANSPORTATION	ARGYLE LAKE STATE PARK MAIN ROAD	F.A. RTE.	SECTION	COUNTY	TOTAL SHEETS	SHEET NO.
#FILEL#		DRAWN - J.T.T.	REVISED -			ARGYLE LAKE STATE PARK	MCDONOUGH	162	49	
PLOT SCALE = #SCALE#		CHECKED - T.T.P.	REVISED -			CONTRACT NO. 46158				
PLOT DATE = #DATE#		DATE - 12/09/10	REVISED -			FED. ROAD DIST. NO. ILLINOIS FED. AID PROJECT				
SCALE: 1" = 20'						SHEET NO. 49 OF 162 SHEETS		STA. 169+75 TO STA. 175+75		