

GUARD POSTS		
STA.	OFFSET	EACH
400+06	19.02	1
400+06	13.03	1
400+06	7.04	1
400+06	1.02	1
400+06	5.03	1
400+06	10.98	1

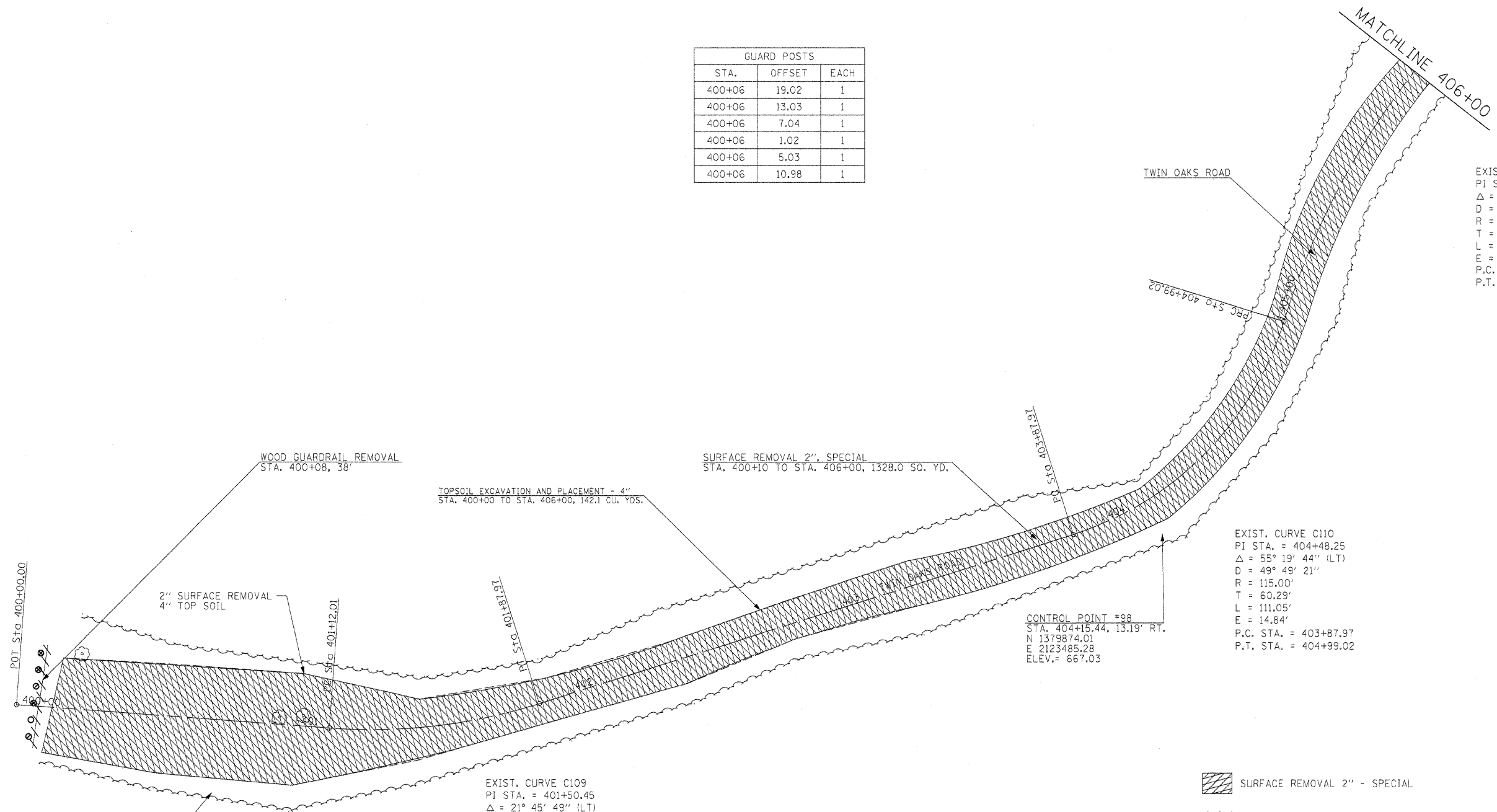
EXIST. CURVE C111  
 PI STA. = 405+73.36  
 $\Delta = 30^\circ 15' 18''$  (RT)  
 $D = 20^\circ 50' 05''$   
 $R = 275.00'$   
 $T = 74.34'$   
 $L = 145.21'$   
 $E = 9.87'$   
 P.C. STA. = 404+99.02  
 P.T. STA. = 406+44.23

EXIST. CURVE C110  
 PI STA. = 404+48.25  
 $\Delta = 55^\circ 19' 44''$  (LT)  
 $D = 49^\circ 49' 21''$   
 $R = 115.00'$   
 $T = 60.29'$   
 $L = 111.05'$   
 $E = 14.84'$   
 P.C. STA. = 403+87.97  
 P.T. STA. = 404+99.02

EXIST. CURVE C109  
 PI STA. = 401+50.45  
 $\Delta = 21^\circ 45' 49''$  (LT)  
 $D = 28^\circ 38' 52''$   
 $R = 200.00'$   
 $T = 38.45'$   
 $L = 75.97'$   
 $E = 3.66'$   
 P.C. STA. = 401+12.01  
 P.T. STA. = 401+87.97

CONTROL POINT #99  
 STA. 400+71.76, 26.07' RT.  
 N 1379534.43  
 E 2123577.32  
 ELEV. = 638.10

CONTROL POINT #98  
 STA. 404+15.44, 13.19' RT.  
 N 1379874.01  
 E 2123485.28  
 ELEV. = 667.03



- SURFACE REMOVAL 2" - SPECIAL
- STEEL PLATE BEAM GUARDRAIL REMOVAL
- PROPOSED GUARDPOST

FILE NAME =	USER NAME = #USER#	DESIGNED - R.H.D.	REVISED -	<b>STATE OF ILLINOIS DEPARTMENT OF TRANSPORTATION</b>	<b>ARGYLE LAKE STATE PARK SIDE ROAD</b>	F.A. RTÉ.	SECTION	COUNTY	TOTAL SHEETS	SHEET NO.
#FILEL#		DRAWN - J.T.T.	REVISED -			ARGYLE LAKE STATE PARK	MCDONOUGH	162	76	
PLOT SCALE = #SCALE#		CHECKED - T.T.P.	REVISED -			CONTRACT NO. 46158				
PLOT DATE = #DATE#		DATE - 12/09/10	REVISED -			FED. ROAD DIST. NO.	ILLINOIS FED. AID PROJECT			
					SCALE: 1" = 20'	SHEET NO. 76 OF 162 SHEETS	STA. 400+00 TO STA. 406+00			