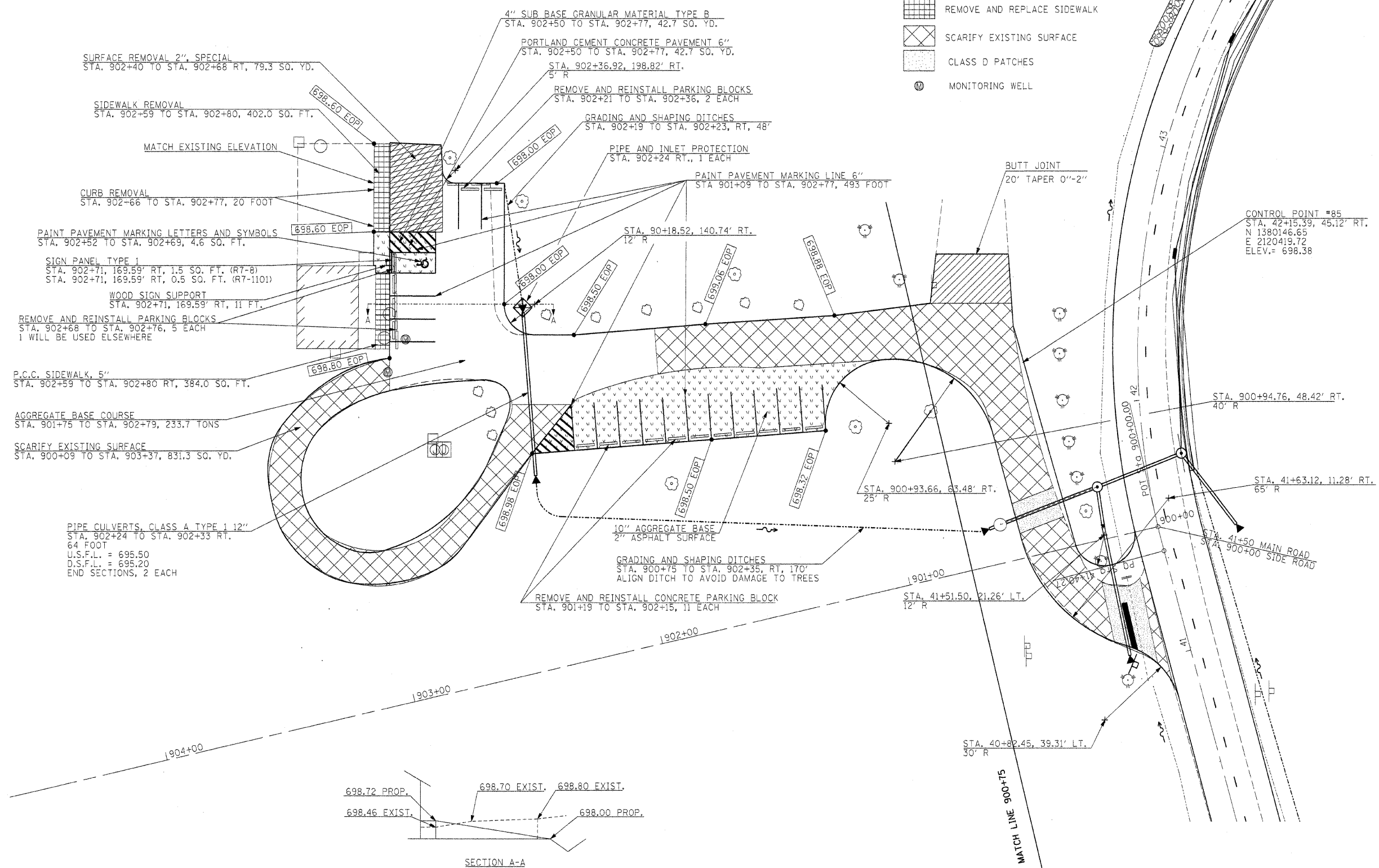


LOCATION	EXCAVATION SPECIAL
PARKING LOT STA. 900+91 TO STA. 902+77	(CU YD) 40.1

- PRECAST CONCRETE PARKING BLOCK
- EXCAVATION (SPECIAL)
- SURFACE REMOVAL 2" - SPECIAL
- REMOVE AND REPLACE SIDEWALK
- SCARIFY EXISTING SURFACE
- CLASS D PATCHES
- MONITORING WELL



SURFACE REMOVAL 2", SPECIAL
STA. 902+40 TO STA. 902+68 RT, 79.3 SQ. YD.

SIDEWALK REMOVAL
STA. 902+59 TO STA. 902+80, 402.0 SQ. FT.

MATCH EXISTING ELEVATION

CURB REMOVAL
STA. 902+66 TO STA. 902+77, 20 FOOT

PAINT PAVEMENT MARKING LETTERS AND SYMBOLS
STA. 902+52 TO STA. 902+69, 4.6 SQ. FT.

SIGN PANEL TYPE 1
STA. 902+71, 169.59' RT, 1.5 SQ. FT. (R7-8)
STA. 902+71, 169.59' RT, 0.5 SQ. FT. (R7-1101)

WOOD SIGN SUPPORT
STA. 902+71, 169.59' RT, 11 FT.

REMOVE AND REINSTALL PARKING BLOCKS
STA. 902+68 TO STA. 902+76, 5 EACH
1 WILL BE USED ELSEWHERE

P.C.C. SIDEWALK, 5"
STA. 902+59 TO STA. 902+80 RT, 384.0 SQ. FT.

AGGREGATE BASE COURSE
STA. 901+75 TO STA. 902+79, 233.7 TONS

SCARIFY EXISTING SURFACE
STA. 900+09 TO STA. 903+37, 831.3 SQ. YD.

PIPE CULVERTS, CLASS A TYPE 1 12"
STA. 902+24 TO STA. 902+33 RT,
64 FOOT
U.S.F.L. = 695.50
D.S.F.L. = 695.20
END SECTIONS, 2 EACH

4" SUB BASE GRANULAR MATERIAL TYPE B
STA. 902+50 TO STA. 902+77, 42.7 SQ. YD.

PORTLAND CEMENT CONCRETE PAVEMENT 6"
STA. 902+50 TO STA. 902+77, 42.7 SQ. YD.

STA. 902+36.92, 198.82' RT,
5' R

REMOVE AND REINSTALL PARKING BLOCKS
STA. 902+21 TO STA. 902+36, 2 EACH

GRADING AND SHAPING DITCHES
STA. 902+19 TO STA. 902+23, RT, 48'

PIPE AND INLET PROTECTION
STA. 902+24 RT., 1 EACH

PAINT PAVEMENT MARKING LINE 6"
STA. 901+09 TO STA. 902+77, 493 FOOT

BUTT JOINT
20' TAPER 0"-2"

CONTROL POINT #85
STA. 42+15.39, 45.12' RT.
N 1380146.65
E 2120419.72
ELEV. = 698.38

STA. 900+94.76, 48.42' RT.
40' R

STA. 41+63.12, 11.28' RT.
65' R

STA. 900+93.66, 63.48' RT.
25' R

10" AGGREGATE BASE
2" ASPHALT SURFACE

GRADING AND SHAPING DITCHES
STA. 900+75 TO STA. 902+35, RT, 170'
ALIGN DITCH TO AVOID DAMAGE TO TREES

REMOVE AND REINSTALL CONCRETE PARKING BLOCK
STA. 901+19 TO STA. 902+15, 11 EACH

698.72 PROP. 698.70 EXIST. 698.80 EXIST.
698.46 EXIST. 698.00 PROP.

SECTION A-A

FILE NAME = #FILEL#	USER NAME = #USER#	DESIGNED - R.H.D.	REVISIONS -	STATE OF ILLINOIS DEPARTMENT OF TRANSPORTATION	ARGYLE LAKE STATE PARK SIDE ROAD			F.A. RTE.	SECTION	COUNTY	TOTAL SHEETS	SHEET NO.
		DRAWN - J.T.T.	REVISIONS -		SCALE: 1" = 20' SHEET NO. 92 OF 162 SHEETS STA. 900+75 TO STA. 904+00			ARGYLE LAKE STATE PARK	MCDONOUGH	162	92	
		CHECKED - T.T.P.	REVISIONS -					CONTRACT NO. 46158				
		DATE - 12/09/10	REVISIONS -					FED. ROAD DIST. NO.	ILLINOIS FED. AID PROJECT			