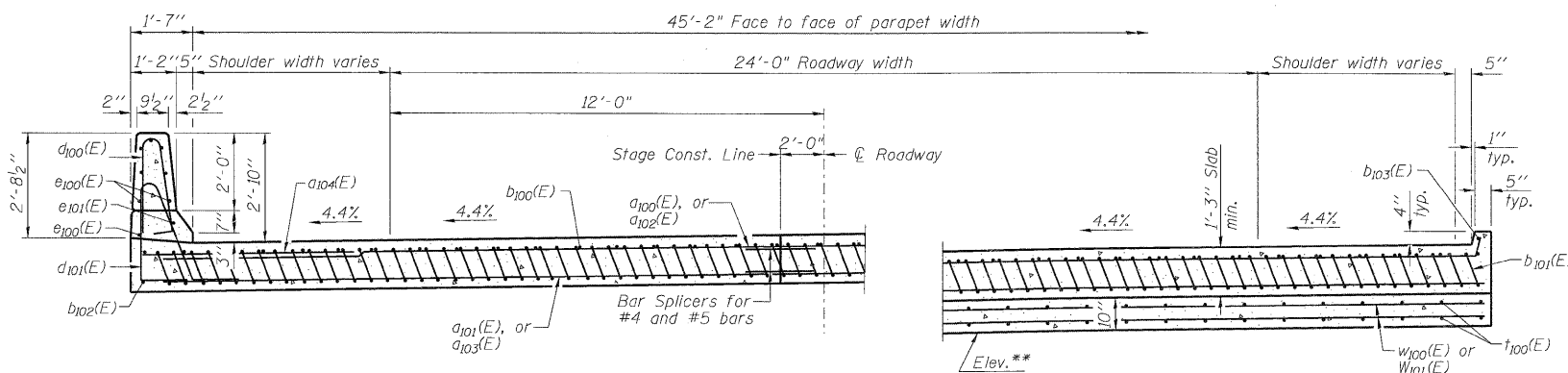


SECTION C-C



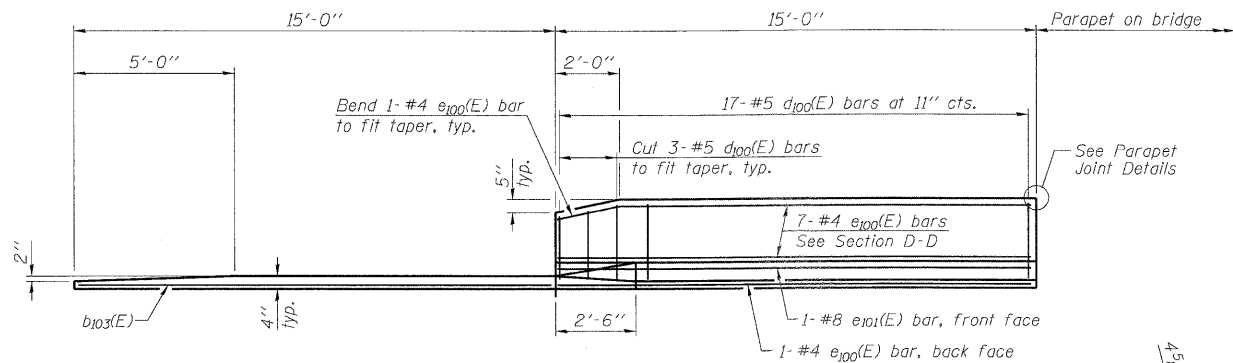
NEAR ABUTMENT

SECTION D-D

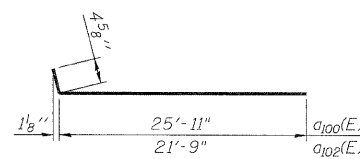
AT APPROACH FOOTING

(See Plan for dimensions not shown)

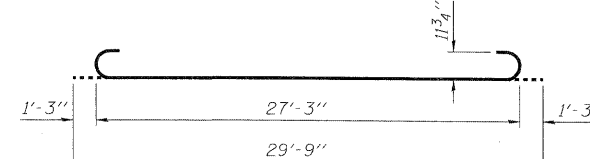
**Elev. 812.96 (west edge of pvmt), Elev. 814.98 (east edge of pvmt) north appr. slab fig.
Elev. 812.85 (west edge of pvmt), Elev. 814.99 (east edge of pvmt) south appr. slab fig.
(Footing cross slope to match superelevation of roadway)



VIEW E-E



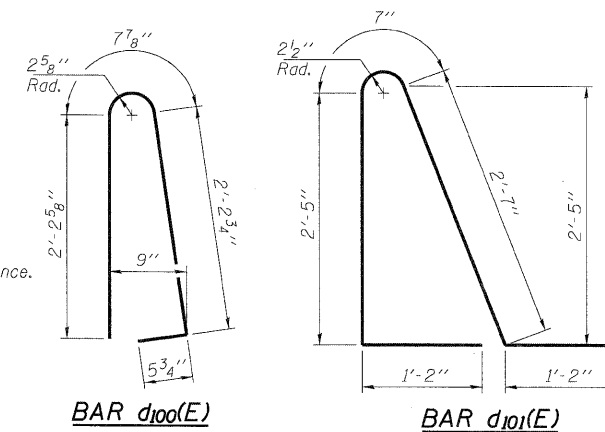
BAR a100(E) & a102(E)



BAR b101(E)

Notes:

See sheet 14 of 26 for Detail A and View B-B.
Approach slab and parapet concrete shall be paid for as Concrete Superstructure.
Approach footing concrete shall be paid for as Concrete Structures.
Reinforcement shall be paid for as Reinforcement Bars, Epoxy Coated.
For v(E) bar details, see sheet 13 of 26.
The approach footing maximum applied service bearing pressure (Qmax) = 2.0 ksf.
For bar splicer details, see sheet 23 of 26.
Cost of excavation for approach footing included with Concrete Structures.
For Porous Granular Embankment (Special) and drainage treatment details, see sheet 3 of 26.
For additional parapet details, see sheet 12 of 26.



BAR d100(E)

BAR d101(E)

**TWO APPROACHES
BILL OF MATERIAL**

Bar	No.	Size	Length	Shape
a100(E)	50	#4	26'-4"	—
a101(E)	92	#5	25'-11"	—
a102(E)	50	#4	22'-2"	—
a103(E)	92	#5	21'-9"	—
a104(E)	48	#6	6'-6"	—
b100(E)	74	#4	29'-8"	—
b101(E)	224	#9	29'-9"	—
b102(E)	4	#4	14'-8"	—
b103(E)	4	#4	14'-6"	—
d100(E)	68	#5	5'-7"	U
d101(E)	68	#5	7'-11"	U
e100(E)	32	#4	14'-8"	—
e101(E)	4	#8	14'-8"	—
t100(E)	188	#4	10'-0"	—
w100(E)	80	#5	25'-11"	—
w101(E)	80	#5	21'-9"	—
Bridge Deck Grooving		Sq. Yd.	300	
Concrete Superstructure		Cu. Yd.	140.9	
Concrete Structures		Cu. Yd.	29.0	
Protective Coat		Sq. Yd.	332	
Reinforcement Bars, Epoxy Coated		Pound	37530	
Bar Splicers		Each	222	