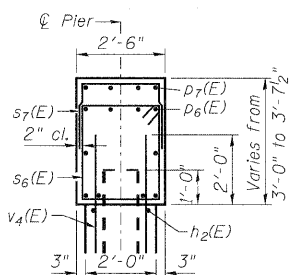
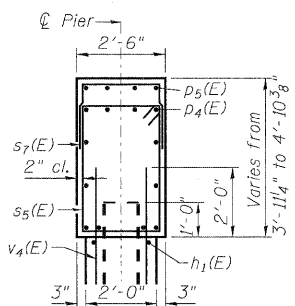


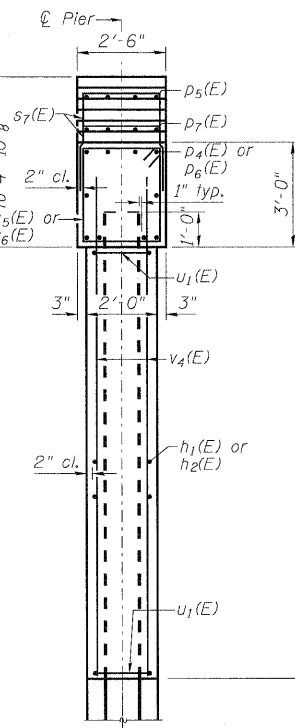
Notes:
 Space reinforcement in cap to miss anchor bolts.
 Pour steps monolithically with cap.
 For details of piles, see sheet 22 of 26.
 See Sheet 23 of 26 for Bar Splicer Details.
 If a portion of the pier wall or concrete encasement is under water, reinforcement may be placed underwater into forms. Concrete shall be tremied according to Article 503.08 of the Standard Specifications to an elevation of 1'-0" above the water line at the time of construction.



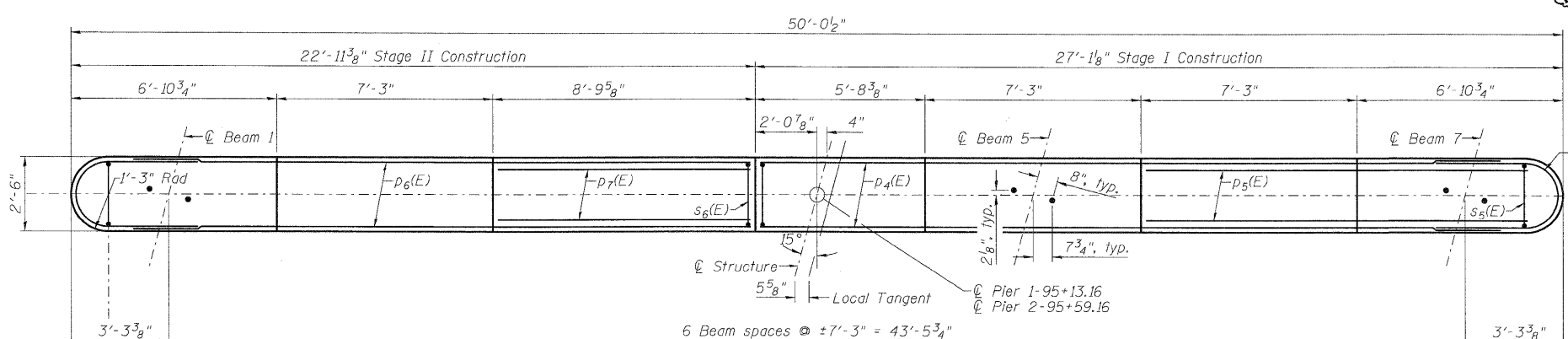
SECTION A-A



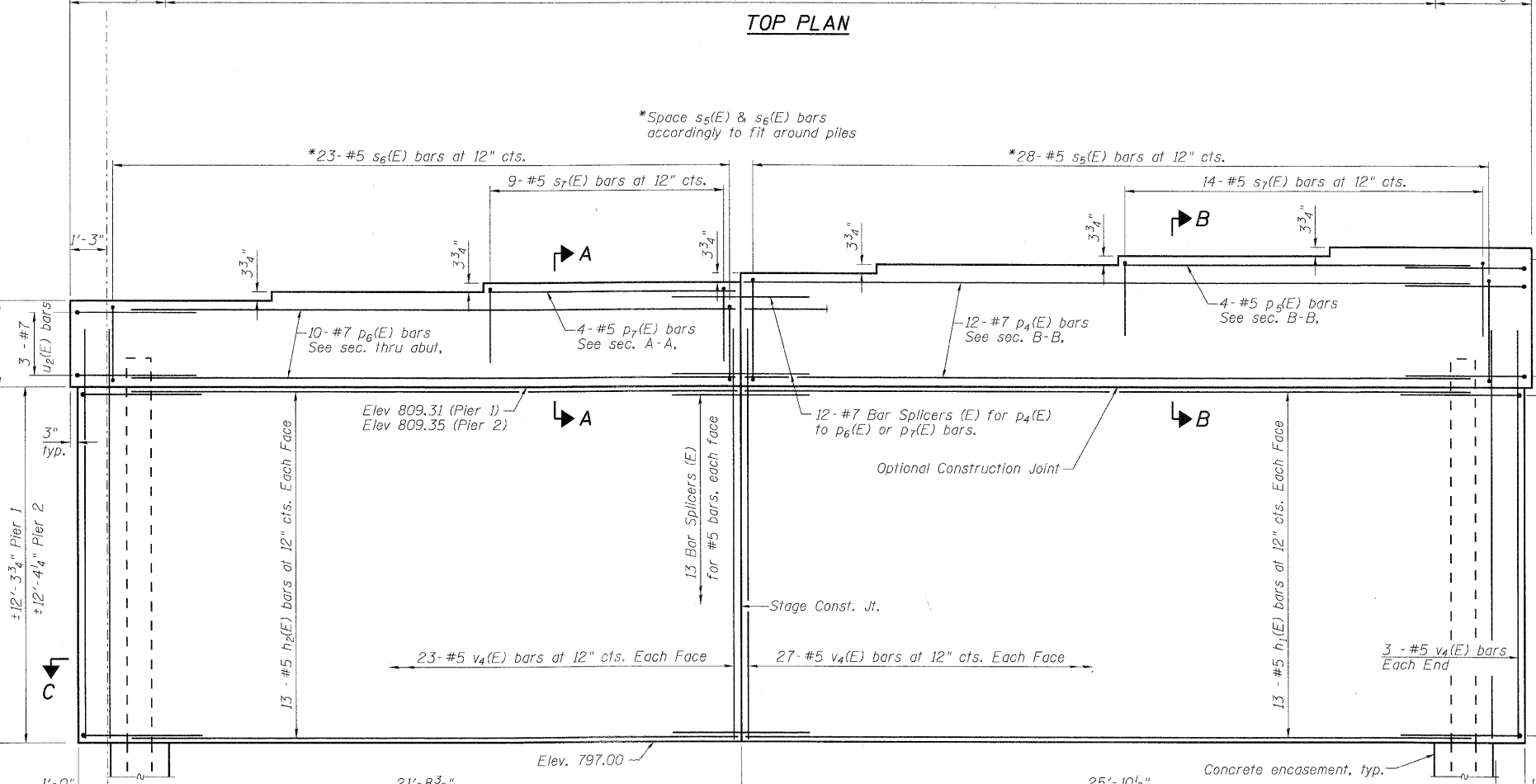
SECTION B-B



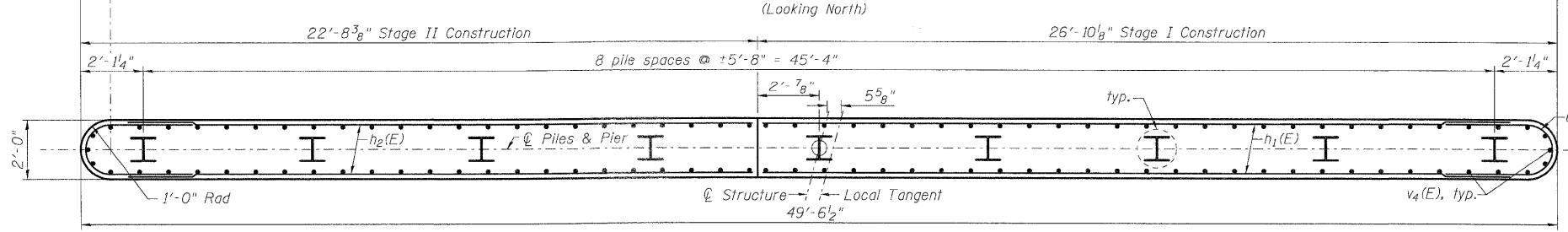
END VIEW



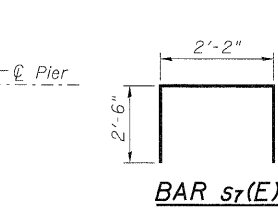
TOP PLAN



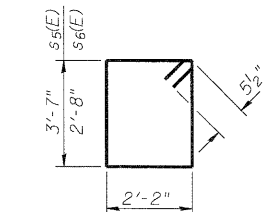
ELEVATION
(Looking North)



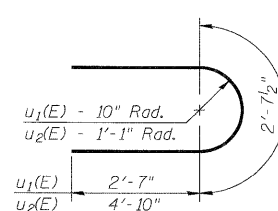
SECTION C-C



BAR s7(E)



BARS s5(E) & s6(E)



BARS u1(E) & u2(E)

BEAM SEAT ELEVATION TABLE

Location	Pier 1	Pier 2
Beam 1	812.31	812.35
Beam 2	812.63	812.66
Beam 3	812.94	812.96
Beam 4	813.25	813.27
Beam 5	813.55	813.57
Beam 6	813.87	813.88
Beam 7	814.17	814.19

TWO PIERS BILL OF MATERIAL

Bar	No.	Size	Length	Shape
h1(E)	52	#5	25'-7"	—
h2(E)	52	#5	21'-5"	—
p4(E)	24	#7	25'-7"	—
p5(E)	8	#5	12'-7"	—
p6(E)	20	#7	21'-5"	—
p7(E)	8	#5	8'-3"	—
s5(E)	56	#5	12'-5"	□
s6(E)	46	#5	10'-7"	□
s7(E)	46	#5	7'-2"	□
u1(E)	52	#5	7'-10"	U
u2(E)	16	#7	13'-1"	U
v4(E)	212	#5	14'-2"	—
Structure Excavation		Cu. Yd.	96	
Concrete Structures		Cu. Yd.	127.2	
Reinforcement Bars, Epoxy Coated		Pound	10390	
Bar Splicers		Each	76	
Furnishing Steel Piles HP 12x53		Foot	608	
Driving Piles		Foot	608	
Test Pile Steel HP 12x53		Each	2	
Pile Shoes		Each	18	
Concrete Encasement		Cu. Yd.	6.3	
Underwater Structure Excavation Protection - Location 1		Each	1	
Underwater Structure Excavation Protection - Location 2		Each	1	

PILE DATA
 Type: HP 12x53 w/ metal shoes
 Nominal Required Bearing: 419 kips
 Factored Resistance Available: 192 kips
 Est. Length: 38 ft.
 No. Production Piles: 16
 No. Test Piles: 2

LOCO, INC.
 CONSULTING ENGINEERS
 1550 WALL ST., SUITE 222
 NAPERVILLE, ILLINOIS 60563 PH: (630) 577-9100

DESIGNED - SLV, SDD
 CHECKED - MJM
 DRAWN - SLV
 CHECKED - DJB

REVISED -
 REVISED -
 REVISED -
 REVISED -

**STATE OF ILLINOIS
 DEPARTMENT OF TRANSPORTATION**

**PIERS 1 AND 2
 STRUCTURE NO. 056-0277**
 SHEET NO. 21 OF 26 SHEETS

F.A.P. RTE.	SECTION	COUNTY	TOTAL SHEETS	SHEET NO.
324	24B-2	McHENRY	76	49
D-91-178-09			CONTRACT NO. 60F64	
ILLINOIS FED. AID PROJECT				