

TRAFFIC SIGNAL LEGEND

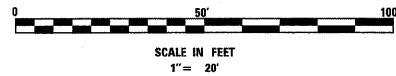
	PROPOSED	EXISTING
CONTROLLER		
SERVICE INSTALLATION		
SIGNAL HEAD		
SIGNAL HEAD WITH BACKPLATE		
SIGNAL HEAD, PEDESTRIAN WITH TIMER		
SIGNAL POST		
MAST ARM ASSEMBLY AND POLE, STEEL		
MAST ARM ASSEMBLY AND POLE, ALUMINUM		
COMMON TRENCH		
UNIT DUCT		
HANDHOLE		
HEAVY DUTY HANDHOLE		
DOUBLE HANDHOLE		
G.S. CONDUIT IN TRENCH OR PUSHED		
PEDESTRIAN PUSHBUTTON DETECTOR		
DETECTOR LOOP		
CAST IRON JUNCTION BOX		
EMERGENCY VEHICLE SYSTEM DETECTOR		
CONFIRMATION BEACON		
SIGNAL HEAD OPTICALLY PROGRAMMED		
CONDUIT SPLICE		
WOOD POLE		
RACEWAY FOR MAGNETIC DETECTOR, TYPE I OR TYPE II		
VEHICLE DETECTOR, NON COMPENSATED MAGNETIC TYPE		
RAILROAD CONTROLLER		
ILLUMINATED SIGN, FIBER OPTIC 'NO LEFT TURN'		
ILLUMINATED SIGN, FIBER OPTIC 'NO RIGHT TURN'		
TELEPHONE CONNECTION		
LUMINAIRE		

THE FOLLOWING ITEMS SHALL BE REMOVED BY THE CONTRACTOR AND SHALL BE DISPOSED OF BY THEM OUTSIDE THE RIGHT-OF-WAY AT THEIR EXPENSE. THE SALVAGE VALUE OF THE REMOVED EQUIPMENT SHALL BE REFLECTED IN THE CONTRACT BID PRICE.

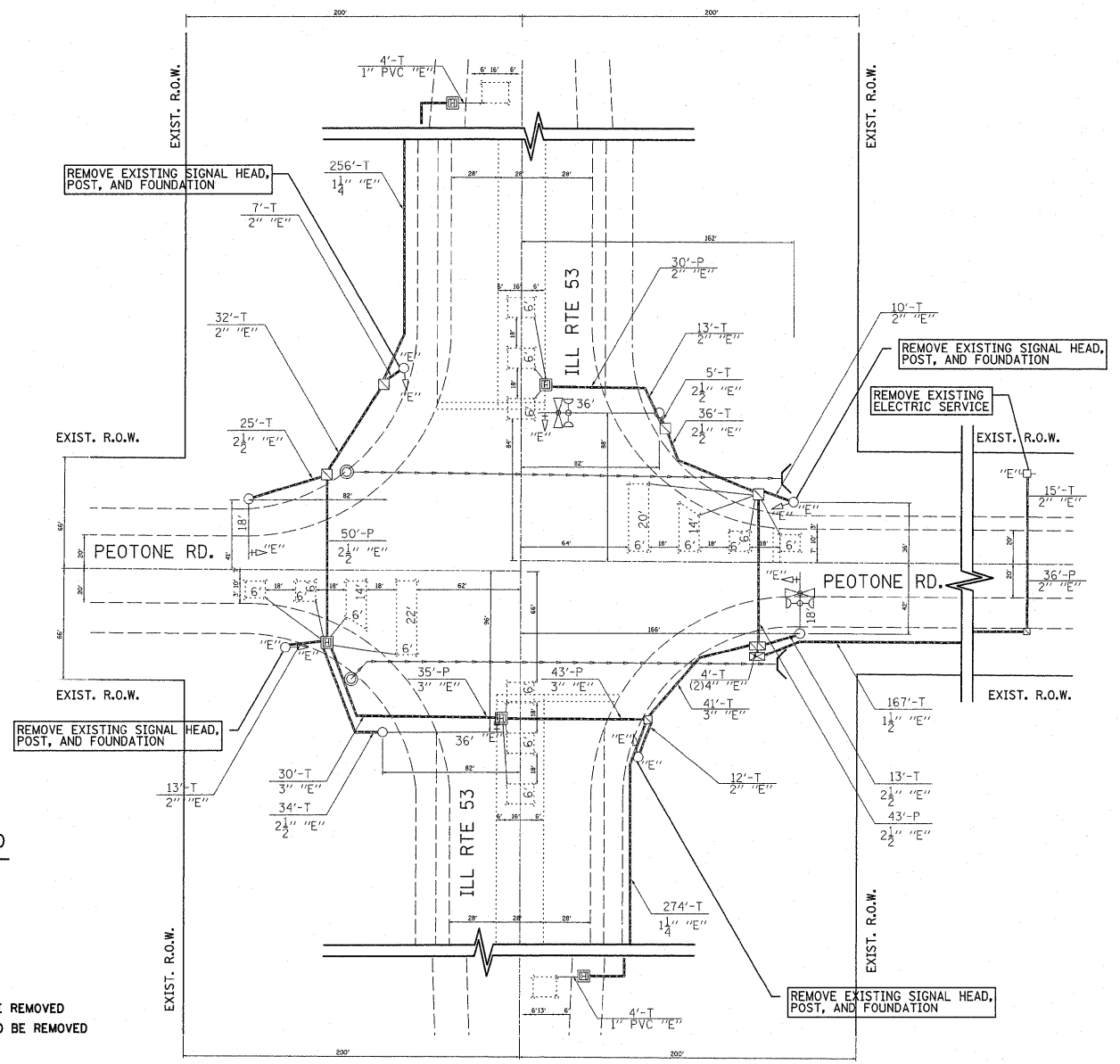
- 2 EACH SIGNAL HEAD, 1-FACE, 3-SECTION BRACKET MOUNTED
- 2 EACH SIGNAL HEAD, 1-FACE, 3-SECTION MAST ARM MOUNTED
- 2 EACH SIGNAL HEAD, 1-FACE, 5-SECTION BRACKET MOUNTED
- 2 EACH SIGNAL HEAD, 1-FACE, 5-SECTION MAST ARM MOUNTED
- 4 EACH TRAFFIC SIGNAL POST
- 6 EACH CONCRETE FOUNDATION
- 4 EACH TRAFFIC SIGNAL BACKPLATE
- 1 EACH POLE MOUNTED ELECTRIC SERVICE
- 2 EACH MAST ARM ASSEMBLY & POLE
- 4 EACH PAINTED SIGNAL POSTS

EXISTING EQUIPMENT TO BE REMOVED LEGEND

	EXISTING CONTROLLER TO BE REMOVED
	EXISTING SERVICE INSTALLATION TO BE REMOVED
	EXISTING SIGNAL HEAD TO BE REMOVED
	EXISTING SIGNAL HEAD WITH BACKPLATE TO BE REMOVED
	EXISTING PEDESTRIAN SIGNAL HEAD TO BE REMOVED
	EXISTING SIGNAL POST TO BE REMOVED
	EXISTING STEEL MAST ARM POLE AND FOUNDATION TO BE REMOVED
	EXISTING ALUMINUM MAST ARM POLE AND FOUNDATION TO BE REMOVED
	EXISTING HANDHOLE TO BE REMOVED
	EXISTING HEAVY DUTY HANDHOLE TO BE REMOVED
	EXISTING PEDESTRIAN PUSHBUTTON TO BE REMOVED
	EXISTING EMERGENCY VEHICLE SYSTEM DETECTOR TO BE REMOVED
	EXISTING CONFIRMATION BEACON TO BE REMOVED



ALL EXISTING SIGNAL HEADS TO BE REPLACED WITH LED SIGNAL HEADS



TRAFFIC SIGNAL REMOVAL PLAN  
IL 53 AT PEOTONE ROAD