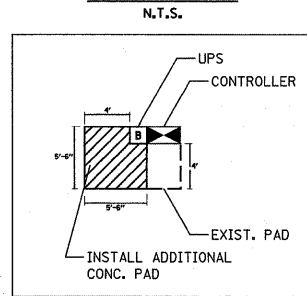


TRAFFIC SIGNAL LEGEND

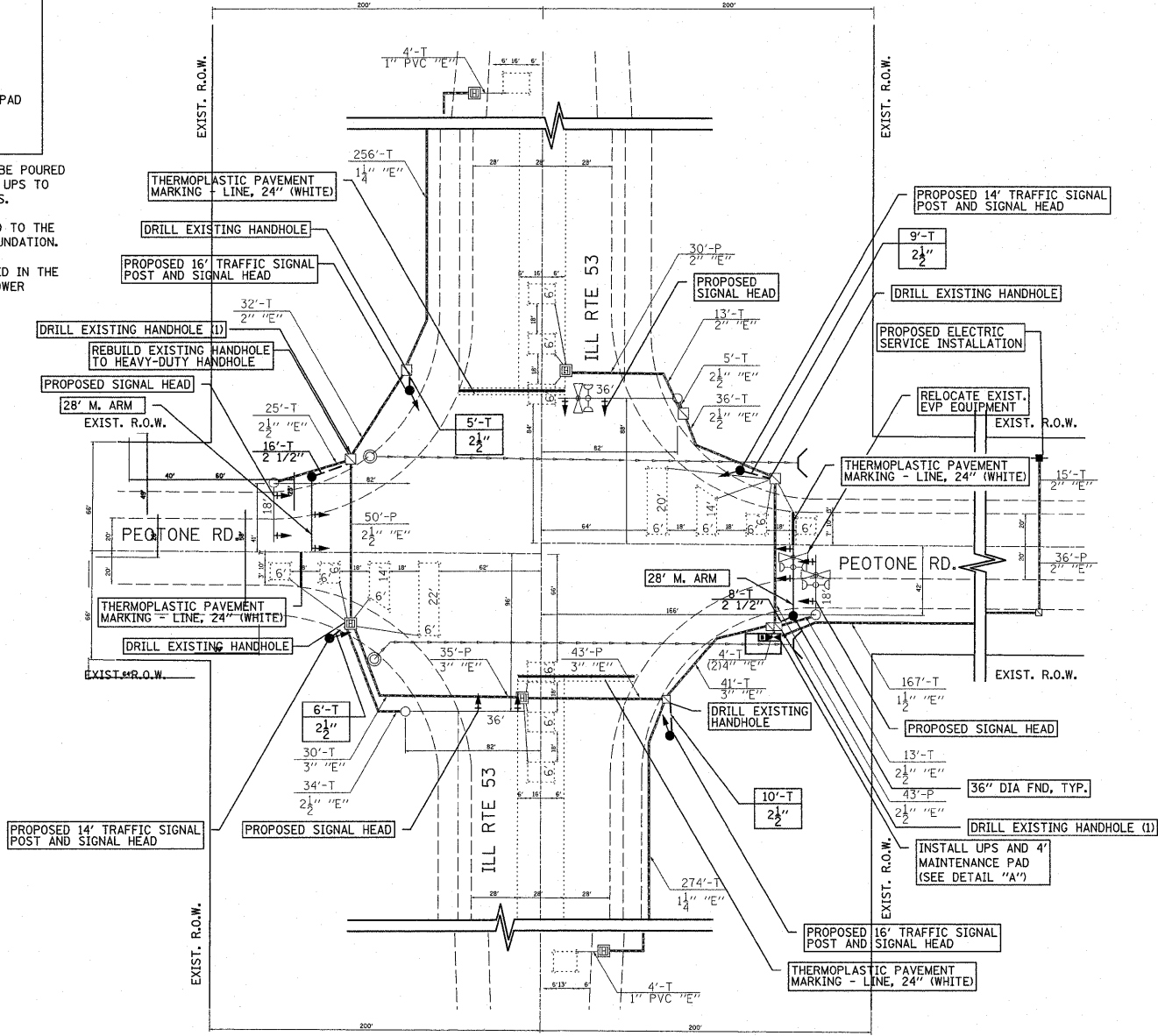
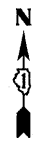
	PROPOSED	EXISTING
CONTROLLER		
SERVICE INSTALLATION		
SIGNAL HEAD		
SIGNAL HEAD WITH BACKPLATE		
SIGNAL HEAD, PEDESTRIAN WITH TIMER		
SIGNAL POST		
MAST ARM ASSEMBLY AND POLE, STEEL		
MAST ARM ASSEMBLY AND POLE, ALUMINUM		
COMMON TRENCH		
UNIT DUCT		
HANDHOLE		
HEAVY DUTY HANDHOLE		
DOUBLE HANDHOLE		
G.S. CONDUIT IN TRENCH OR PUSHED		
PEDESTRIAN PUSHBUTTON DETECTOR		
DETECTOR LOOP		
CAST IRON JUNCTION BOX		
EMERGENCY VEHICLE SYSTEM DETECTOR		
CONFIRMATION BEACON		
SIGNAL HEAD OPTICALLY PROGRAMMED		
CONDUIT SPLICE		
WOOD POLE		
RACEWAY FOR MAGNETIC DETECTOR, TYPE I OR TYPE II		
VEHICLE DETECTOR, NON COMPENSATED MAGNETIC TYPE		
RAILROAD CONTROLLER		
ILLUMINATED SIGN, FIBER OPTIC "NO LEFT TURN"		
ILLUMINATED SIGN, FIBER OPTIC "NO RIGHT TURN"		
TELEPHONE CONNECTION		
LUMINAIRE		

DETAIL "A"



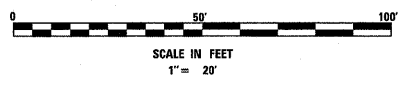
- 1) 5" THICK CONCRETE PAD SHALL BE POURED NEXT TO NEW CONTROLLER AND/OR UPS TO PROVIDE EASY MAINTENANCE ACCESS.
- 2) MAINTENANCE PAD SHALL EXTEND TO THE EDGE OF EXISTING CONTROLLER FOUNDATION.
- 3) COST OF PAD SHALL BE INCLUDED IN THE PRICE OF THE UNINTERRUPTIBLE POWER SUPPLY PAY ITEM.

ALL EXISTING SIGNAL HEADS TO BE REPLACED WITH LED SIGNAL HEADS



NOTE:
THE CONTRACTOR SHALL BE REQUIRED TO MAINTAIN THE OPERATION OF THE TRAFFIC SIGNALS DURING THE ENTIRE PROJECT.

NOTE:
THE FINAL LOCATION OF THE SIGNAL POSTS WILL BE DETERMINED IN THE FIELD AND THE CONTRACTOR SHALL VERIFY THE LOCATION WITH THE RESIDENT ENGINEER.



TRAFFIC SIGNAL MODIFICATION PLAN
IL 53 AT PEOTONE ROAD

1" = 20'

FILE NAME =	USER NAME = qureshiya	DESIGNED -	REVISED -	STATE OF ILLINOIS DEPARTMENT OF TRANSPORTATION	TRAF SIGNAL MODIFICATION PLAN IL 53 AT PEOTONE RD		F.A.P. RTE.	SECTION	COUNTY	TOTAL SHEETS	SHEET NO.	
es:\pw\work\pwwdot\qureshiya\d0212316\0122009-shr-plan.dgn		DRAWN -	REVISED -		SCALE: NTS	SHEET NO. 2 OF 3 SHEETS	STA.	2010-133-1	WILL	54	36	
		CHECKED -	REVISED -					• 846/357				CONTRACT NO. 60F75
		DATE = 10/28/2010	REVISED -				TO STA.					ILLINOIS FED. AID PROJECT