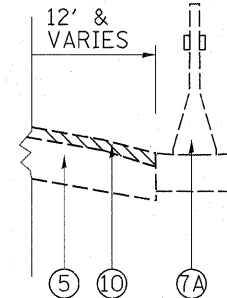
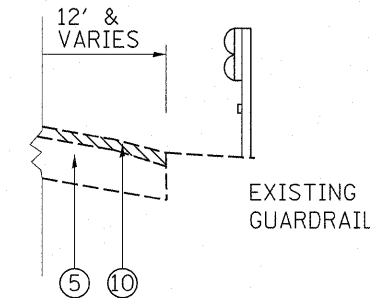


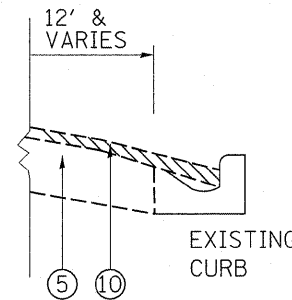
IL-55  
EXISTING TYPICAL CROSS SECTION  
STA. 43+91 TO STA. 681+05

EXISTING TYPICAL CROSS SECTION

EXISTING TYPICAL CROSS SECTION



EXISTING TYPICAL CROSS SECTION



**LEGEND**

- ① EXISTING HOT-MIX ASPHALT SURF. CSE., ± 5"
- ② EXISTING P.C.C. PAVEMENT, 10"
- ②A EXISTING HOT-MIX ASPHALT SURFACE AFTER MILLING, ± 2 3/4"
- ③ EXISTING SUB-BASE GRAN. MATL., 4"
- ④ EXISTING AGGREGATE SUBGRADE, 12"
- ⑤ EXISTING HOT-MIX ASPHALT SHOULDER
- ⑥ EXISTING CONC. BINDER CSE. MIX B, TYPE 1
- ⑥A EXISTING PIPE UNDERDRAIN
- ⑦ EXISTING AGGREGATE SHOULDER TYPE "B"
- ⑦A EXISTING CONC BARRIER WALL DOUBLE FACE (2'-3' WIDE)
- ⑧ PROPOSED HOT-MIX ASPHALT SURFACE REMOVAL, 2 1/4" (RAMPS)
- ⑨ PROPOSED HOT-MIX ASPHALT SURFACE REMOVAL, 4" (MAINLINE)
- ⑩ PROPOSED HOT-MIX ASPHALT SURFACE REMOVAL, 3 3/4" (OUTSIDE & INSIDE SHOULDER)
- ⑪ PROPOSED POLYMERIZED HOT-MIX ASPHALT BINDER COURSE, STONE MATRIX ASPHALT, N80, 2"
- ⑫ PROPOSED POLYMERIZED HOT-MIX ASPHALT SURFACE COURSE, STONE MATRIX ASPHALT, N80, 2"
- ⑬ PROPOSED HOT-MIX ASPHALT BINDER COURSE, IL-19, N70, 2 1/4"
- ⑭ PROPOSED HOT-MIX ASPHALT SURFACE COURSE, MIX. "D", N70, 1 1/2"
- ⑮ PROPOSED SHOULDER RUMBLE STRIP
- ⑯ PROPOSED AGGREGATE WEDGE SHOULDER, TYPE "B"
- ⑰ PROPOSED GRADING AND SHAPING SHOULDER
- ⑱ PROPOSED POLYMERIZED LEVELING BINDER, IL-4.75, N50, 3/4"

**NOTE:**

- CONTRACTOR SHALL PATCH BEFORE MILLING

PFPP SP. PROV. PERTAINS ONLY TO THE SMA, SURFACE & BINDER ON THE MAINLINE.

HOT-MIX ASPHALT MIXTURE REQUIREMENTS	
MIXTURE TYPE	AIR VOIDS(%)
<b>MAINLINE RESURFACING</b>	
POLYMERIZED HMA SURFACE COURSE, STONE MATRIX ASPHALT, N80	3.5% @ 80 GYR.
POLYMERIZED HMA BINDER COURSE, STONE MATRIX ASPHALT, N80	3.5% @ 80 GYR.
<b>RAMPS RESURFACING</b>	
HOT-MIX ASPHALT SURFACE COURSE, MIX "D", N70 (IL 9.5 mm)	4% @ 70 GYR.
POLY. LEVELING BINDER, (MACHINE METHOD), IL-4.75, N50	4% @ 50 GYR.
<b>OUTSIDE &amp; INSIDE SHOULDER RESURFACING</b>	
HOT-MIX ASPHALT SURFACE COURSE, MIX "D", N70 (IL 9.5 mm)	4% @ 70 GYR.
HOT-MIX ASPHALT BINDER COURSE, N70 (IL-19.0 mm)	4% @ 70 GYR.
<b>PATCHING</b>	
CLASS D PATCHES (HMA BINDER IL-25 mm)	4% @ 105 GYR.
HMA REPLACEMENT OVER PATCHES (HMA BINDER IL-19 mm)	4% @ 70 GYR.

NOTE 1: THE UNIT WEIGHT USED TO CALCULATE ALL HOT-MIX ASPHALT SURFACE MIXTURE QUANTITIES IS 112 LBS/SQ YD/IN. USED 135 LBS/SQ YD/IN FOR STONE MATRIX ASPHALT SURFACE.

\* WHEN RAP EXCEEDS 20%, THE NEW ASPHALT BINDER IN THE MIX SHALL BE PG 58-22.

FILE NAME =	USER NAME = qureshija	DESIGNED -	REVISED -
c:\pwork\k\pwork\qureshija\d0187440\011310-sht-plendgn		DRAWN -	REVISED -
	PLOT SCALE = 52.9406' / IN.	CHECKED -	REVISED -
	PLOT DATE = 1/3/2011	DATE -	REVISED -

**STATE OF ILLINOIS  
DEPARTMENT OF TRANSPORTATION**

**IL. ROUTE 55  
TYPICAL SECTION FOR MAINLINE**

F.A.I. RTE. 55	SECTION *	COUNTY COOK	TOTAL SHEETS 197	SHEET NO. 5
SCALE: SHEET NO. OF SHEETS STA. TO STA.			ILLINOIS FED. AID PROJECT CONTRACT NO. 60164	