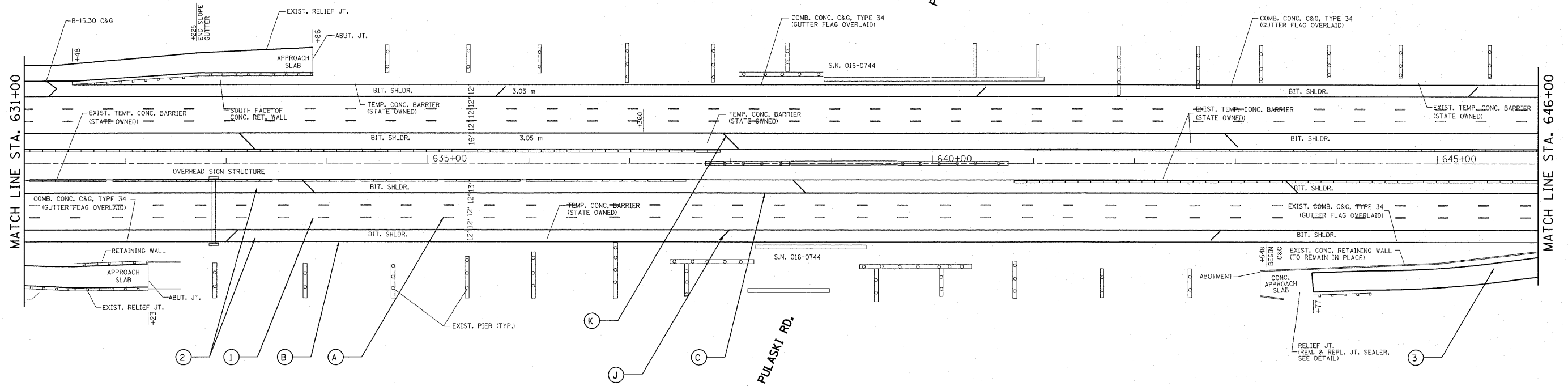
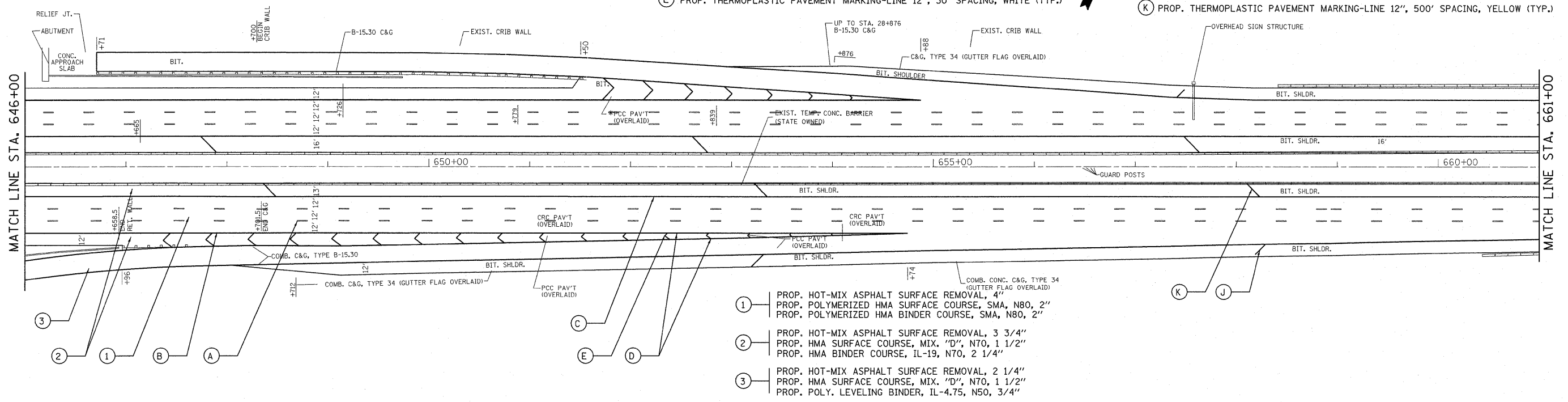
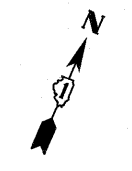


I-55



I-55



- (A) PROP. PREFORMED PLASTIC PAVEMENT MARKING, TYPE B-INLAID-LINE 5" (TYP.)
- (B) PROP. THERMOPLASTIC PAVEMENT MARKING-LINE 4", WHITE (TYP.)
- (C) PROP. THERMOPLASTIC PAVEMENT MARKING-LINE 4", YELLOW (TYP.)
- (D) PROP. THERMOPLASTIC PAVEMENT MARKING-LINE 8", WHITE (TYP.)
- (E) PROP. THERMOPLASTIC PAVEMENT MARKING-LINE 12", 30' SPACING, WHITE (TYP.)
- (F) PROP. THERMOPLASTIC PAVEMENT MARKING-LINE 8", 3' DASH-9' SKIP, WHITE (TYP.)
- (G) PROP. THERMOPLASTIC PAVEMENT MARKING LETTERS AND SYMBOLS, WHITE (TYP.)
- (H) PROP. THERMOPLASTIC PAVEMENT MARKING STOP LINE 24", WHITE (TYP.)
- (I) PROP. THERMOPLASTIC PAVEMENT MARKING TURN LINE 6", WHITE (TYP.)
- (J) PROP. THERMOPLASTIC PAVEMENT MARKING-LINE 12", 500' SPACING, WHITE (TYP.)
- (K) PROP. THERMOPLASTIC PAVEMENT MARKING-LINE 12", 500' SPACING, YELLOW (TYP.)

- ① PROP. HOT-MIX ASPHALT SURFACE REMOVAL, 4"
PROP. POLYMERIZED HMA SURFACE COURSE, SMA, N80, 2"
PROP. POLYMERIZED HMA BINDER COURSE, SMA, N80, 2"
- ② PROP. HOT-MIX ASPHALT SURFACE REMOVAL, 3 3/4"
PROP. HMA SURFACE COURSE, MIX. "D", N70, 1 1/2"
PROP. HMA BINDER COURSE, IL-19, N70, 2 1/4"
- ③ PROP. HOT-MIX ASPHALT SURFACE REMOVAL, 2 1/4"
PROP. HMA SURFACE COURSE, MIX. "D", N70, 1 1/2"
PROP. POLY. LEVELING BINDER, IL-4.75, N50, 3/4"

| | | | | | | | | | | | |
|---|----------------------|------------|-----------|---|---|---------------------------|---------|--------|--------------|-----------|--|
| FILE NAME = | USER NAME = qureshya | DESIGNED - | REVISED - | STATE OF ILLINOIS DEPARTMENT OF TRANSPORTATION | SCALE: SHEET NO. OF SHEETS STA. TO STA. | F.A.I. RTE. | SECTION | COUNTY | TOTAL SHEETS | SHEET NO. | |
| cr\pwork\pwork\qureshya\0187440\011310-shr-plan.dgn | | DRAWN - | REVISED - | | | 55 | . | COOK | 197 | 46 | |
| PLOT SCALE = 52.9406' / IN. | | CHECKED - | REVISED - | | | CONTRACT NO. 60164 | | | | | |
| PLOT DATE = 1/3/2011 | | DATE - | REVISED - | | | ILLINOIS FED. AID PROJECT | | | | | |