

Existing Structure: S.N. 016-0001 built in 1962 as F.A.I. Route 55, Section 0101-601-HB. In 1995, the superstructure was replaced and widened, and the substructure was rehabilitated and widened. Structure consists of a three span steel WF beam bridge with 275'-5⁷/₁₆" back-to-back abutments, 63'-2" out-to-out deck width, multi-column piers and stub abutments.

GENERAL NOTES

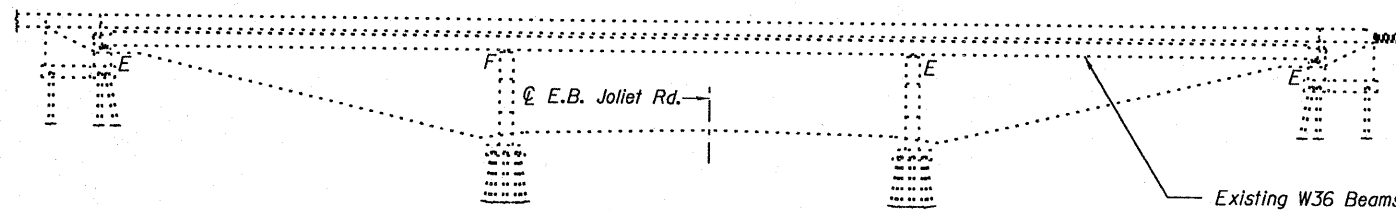
Plan dimensions and details relative to existing plans are subject to nominal construction variations. The Contractor shall field verify existing dimensions and details affecting new construction and make necessary approved adjustments prior to construction or ordering of materials. Such variations shall not be cause for additional compensation for a change in scope of the work, however, the Contractor will be paid for the quantity actually furnished at the unit price bid for the work.

Existing pavement markings shall be temporarily covered prior to application of the Concrete Sealer, to prevent the material from being applied to the markings. The temporary covering shall be removed after application of the Concrete Sealer and prior to opening to traffic. Cost is included with "Concrete Sealer".

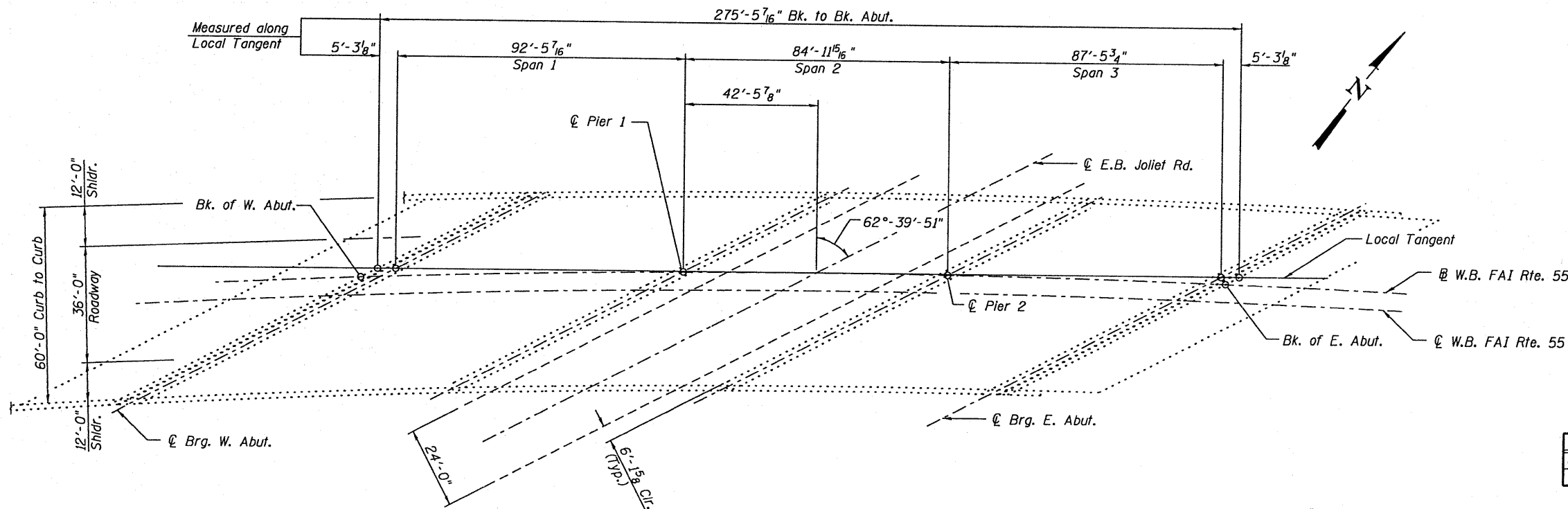
See special provisions for lane closure requirements. Roadway shall only be opened to traffic after sealant has completely cured.

SCOPE OF WORK

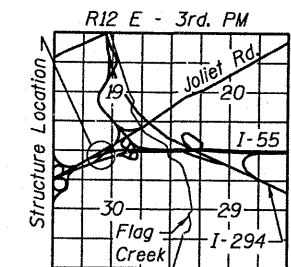
Apply Concrete Sealer to top of deck surface and top and inside vertical face of parapets.



ELEVATION



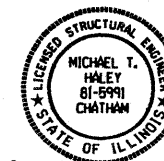
PLAN



LOCATION SKETCH

TOTAL BILL OF MATERIAL

Item	Unit	Total
Concrete Sealer	Sq. Ft.	18338



Michael T. Haley 12-6-10
 Licensed Structural Engineer
 State of Illinois No. 81-5991
 Expires 11/30/2012

GENERAL PLAN AND ELEVATION
W.B I-55 OVER JOLIET ROAD
FAI RTE 55
SECTION (0102-631,ETC,0507-635K)RS-3
COOK COUNTY
STRUCTURE NO. 016-0001



USER NAME =	DESIGNED - TBP	REVISED -
PLOT SCALE =	CHECKED - KHH	REVISED -
PLOT DATE =	DRAWN - ESH	REVISED -
	CHECKED - KHH	REVISED -

STATE OF ILLINOIS
DEPARTMENT OF TRANSPORTATION

GENERAL PLAN & ELEVATION
STRUCTURE NO. 016-0001

SHEET NO. 1 OF 1 SHEET

F.A.I. RTE.	SECTION	COUNTY	TOTAL SHEETS	SHEET NO.
55	(0102-631,ETC,0507-635K)RS-3	COOK	107	52
CONTRACT NO. 60164			ILLINOIS FED. AID PROJECT	