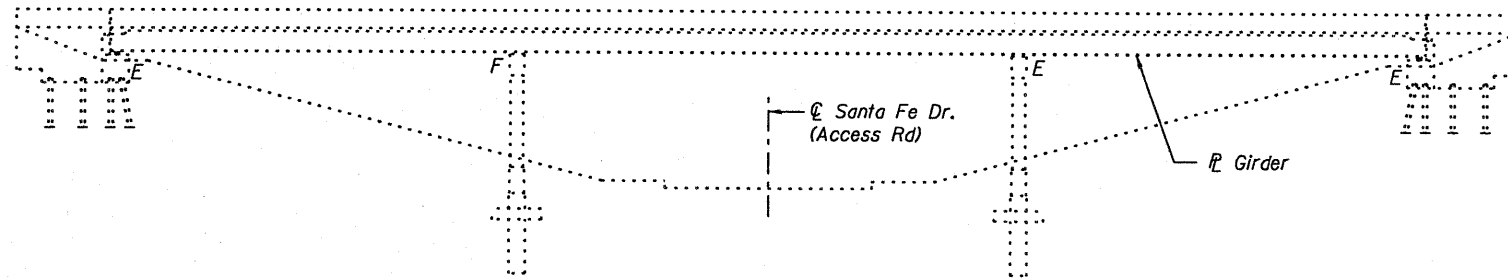
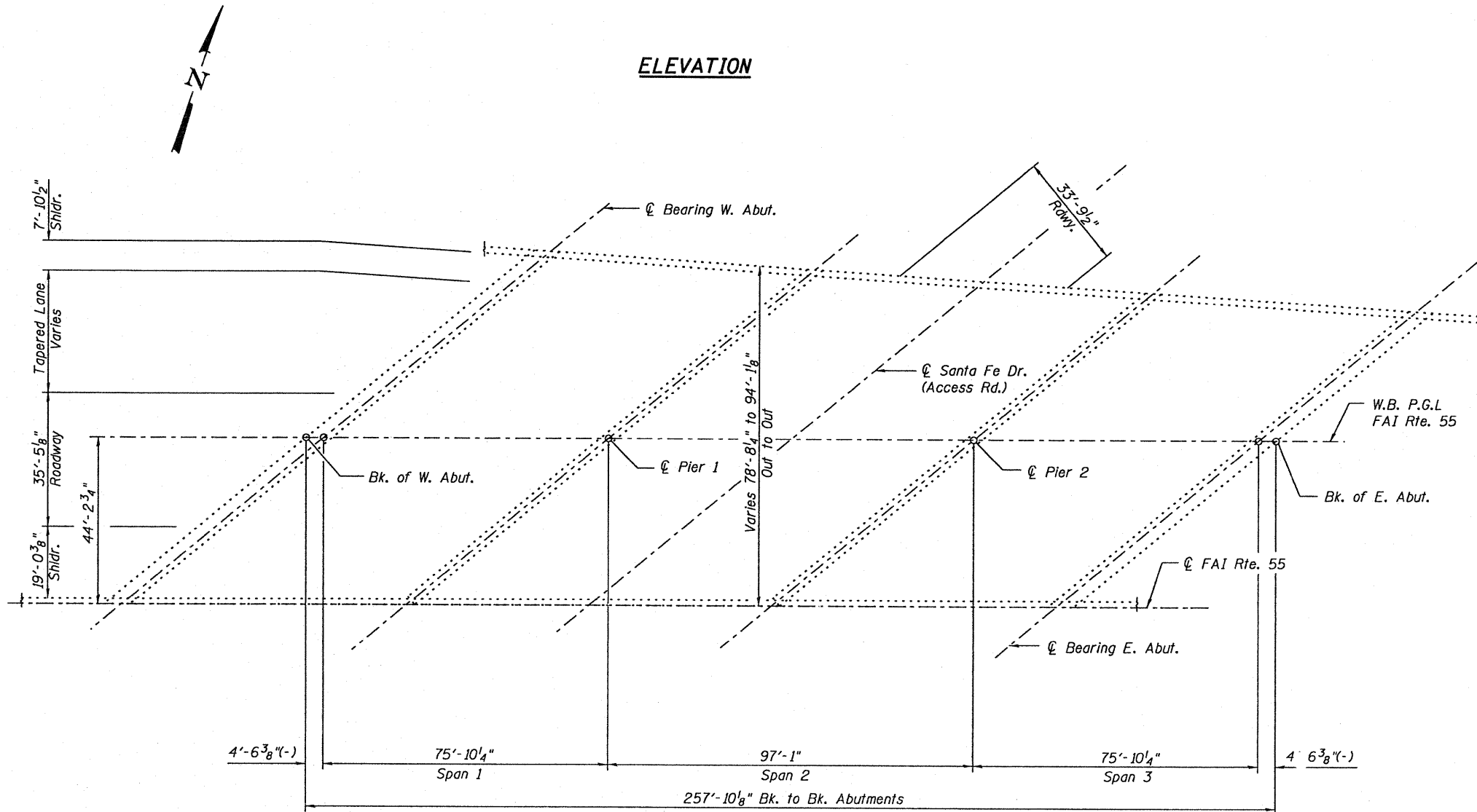


Existing Structure: S.N. 016-0007 built in 1964 as W.B. F.A.I Route 55 under section 0404-674 HB. In 1999, the bridge was widened and the deck was removed and replaced. Structure consists of a three span steel plate girder bridge with 275'-10 1/8" back-to-back abutments, varies 78'-8 1/4" to 94'-1 1/8" out-to-out deck width. The substructure consists of multi column piers and pile bent abutments. The widened portions of the piers utilize drilled shafts.



ELEVATION



PLAN

GENERAL NOTES

Plan dimensions and details relative to existing plans are subject to nominal construction variations. The Contractor shall field verify existing dimensions and details affecting new construction and make necessary approved adjustments prior to construction or ordering of materials. Such variations shall not be cause for additional compensation for a change in scope of the work, however, the Contractor will be paid for the quantity actually furnished at the unit price bid for the work.

Existing pavement markings shall be temporarily covered prior to application of the Concrete Sealer, to prevent the material from being applied to the markings. The temporary covering shall be removed after application of the Concrete Sealer and prior to opening to traffic. Cost is included with "Concrete Sealer".

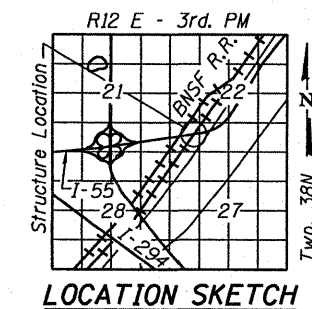
See special provisions for lane closure requirements. Roadway shall only be opened to traffic after sealant has completely cured.

SCOPE OF WORK

Apply Concrete Sealer to top of deck surface and top and inside vertical face of parapets.

TOTAL BILL OF MATERIAL

Item	Unit	Total
Concrete Sealer	Sq. Ft.	23089



Michael J. Haley 12-6-10
 Michael T. Haley Date
 Licensed Structural Engineer
 State of Illinois No. 81-5991
 Expires 11/30/2012

GENERAL PLAN AND ELEVATION
W.B I-55 OVER BNSF RAILWAY ACCESS ROADWAY
FAI RTE 55
SECTION (0102-631.ETC.0507-635K)RS-3
COOK COUNTY
STRUCTURE NO. 016-0007

LE LIN ENGINEERING, LTD.
 Consulting Engineers
 Chatham, Illinois

USER NAME =	DESIGNED - TBP	REVISIONS -
PLOT SCALE =	CHECKED - KHH	REVISIONS -
PLOT DATE =	DRAWN - ESH	REVISIONS -
	CHECKED - KHH	REVISIONS -

STATE OF ILLINOIS
DEPARTMENT OF TRANSPORTATION

GENERAL PLAN & ELEVATION
STRUCTURE NO. 016-0007

SHEET NO. 1 OF 1 SHEET

F.A.I. RTE.	SECTION	COUNTY	TOTAL SHEETS	SHEET NO.
55	(0102-631.ETC.0507-635K)RS-3	COOK	197	56
			CONTRACT NO. 60164	
ILLINOIS FED. AID PROJECT				