

Existing Structure: S.N. 016-0019(W.B.) built in 1963 as F.A.I. Route 55, Section 1212-620 VB. Structure consists of a three span steel beam bridge with 168'-2" back-to-back abutments, varies 72'-0³/₈" to 83'-4⁵/₈" out-to-out deck width, multi-column piers and stub abutments. In 1999, the overlay was removed and replaced, expansion joints were reconstructed at the abutments and hangers, the longitudinal joint was closed, the deck slab was repaired, the bearings at abutments and piers were adjusted, parapets were retrofitted, abutment backwall was removed and replaced and the slopewall and substructure were repaired.

GENERAL NOTES

Plan dimensions and details relative to existing plans are subject to nominal construction variations. The Contractor shall field verify existing dimensions and details affecting new construction and make necessary approved adjustments prior to construction or ordering of materials. Such variations shall not be cause for additional compensation for a change in scope of the work, however, the Contractor will be paid for the quantity actually furnished at the unit price bid for the work.

Existing pavement markings shall be temporarily covered prior to application of the Concrete Sealer, to prevent the material from being applied to the markings. The temporary covering shall be removed after application of the Concrete Sealer and prior to opening to traffic. Cost is included with "Concrete Sealer".

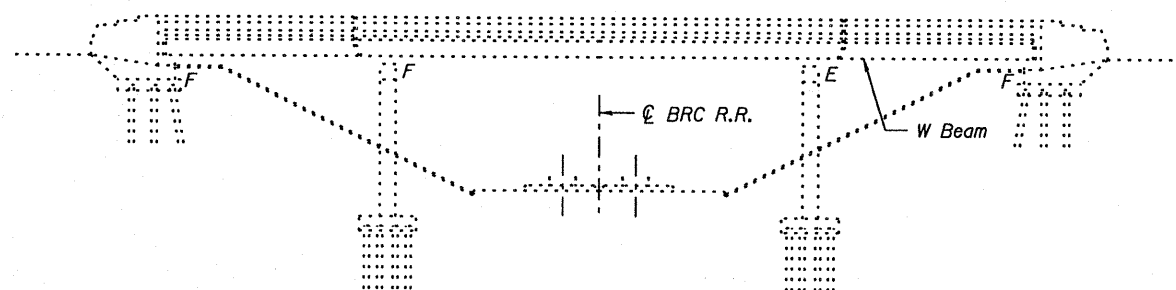
See special provisions for lane closure requirements. Roadway shall only be opened to traffic after sealant has completely cured.

SCOPE OF WORK

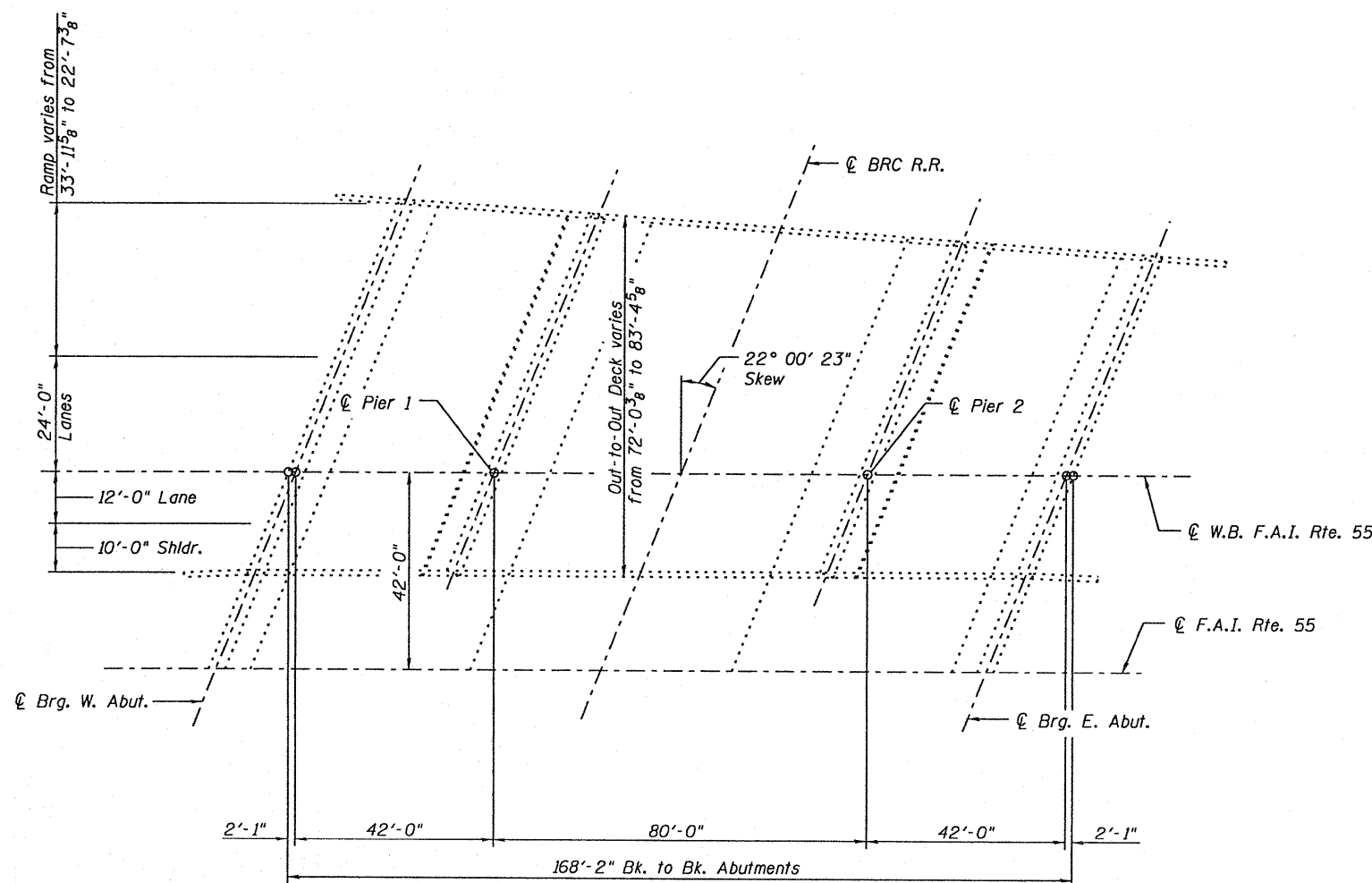
Apply Concrete Sealer to top of deck surface and top and inside vertical face of parapets.

TOTAL BILL OF MATERIAL

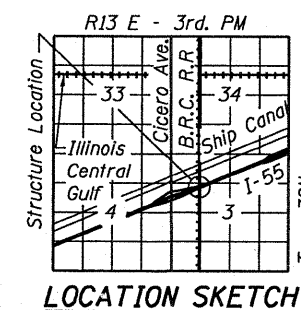
Item	Unit	Total
Concrete Sealer	Sq. Ft.	13797



ELEVATION



PLAN



LOCATION SKETCH



Michael T. Haley 12-6-10
 Michael T. Haley Date
 Licensed Structural Engineer
 State of Illinois No. 81-5991
 Expires 11/30/2012

GENERAL PLAN AND ELEVATION
W.B I-55 OVER BRC RAILROAD
FAI RTE 55
SECTION (0102-631,ETC,0507-635K)RS-3
COOK COUNTY
STRUCTURE NO. 016-0019

LE LIN ENGINEERING, LTD.
 Consulting Engineers
 Chatham, Illinois

USER NAME =	DESIGNED - TBP	REVISED -
	CHECKED - KHH	REVISED -
PLOT SCALE =	DRAWN - TBP	REVISED -
PLOT DATE =	CHECKED - KHH	REVISED -

STATE OF ILLINOIS
DEPARTMENT OF TRANSPORTATION

GENERAL PLAN & ELEVATION
STRUCTURE NO. 016-0019

SHEET NO. 1 OF 1 SHEET

F.A.I. RTE.	SECTION	COUNTY	TOTAL SHEETS	SHEET NO.
55	(0102-631,ETC,0507-635K)RS-3	COOK	197	16
			CONTRACT NO. 60164	
[ILLINOIS] FED. AID PROJECT				